



# BIO-ENERGIZER® - Hair growth booster



© BiotechMarine

Exit

BiotechMarine® April 2011

# BIO-ENERGIZER® - Characteristics

## CTFA / INCI Name:

*Propylene Glycol – Aqua/Water – Pelvetia Canaliculata extract – Laminaria Digitata extract*

RECOMMENDED USE: 5%

CAS: 92128.82.0 – 90046.12.1

ASPECT: limpid liquid

COLOR: orange brown to red brown

IODINE CONTENT: < 30 mg/kg (ppm) in PG version

10 < content < 25 mg/kg (ppm) in BG version

SOLUBILITY: water

PRESERVATIVE : none in BG PF version

APPROVAL: Japan (JNCI)

CHINA : OK

Exit



## PROBLEM: HAIR AGGRESSIONS

Hair speed of growth depends on:

- Physiological factors (age, sex, stress, food)
- Physical factors (seasons, humidity or dryness of air)
- Environmental aggressions (hair dyeing, brushing, perms, pollution)



**Hair growth deregulation**

**Hair damages**

**Temporary hair loss**

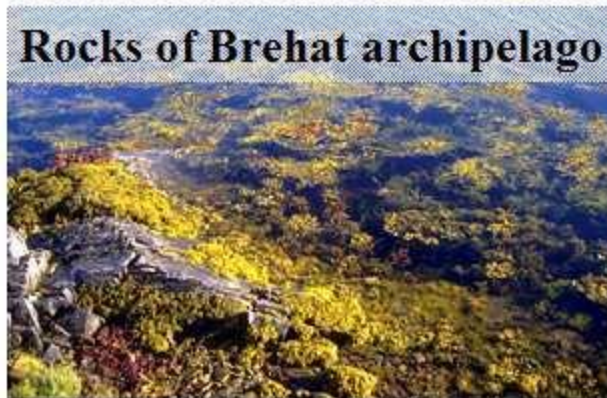


# BIO-ENERGIZER® - Algae specific answer

Bioenergizer is extracted from two algae:

**Laminaria Digitata**, known for its stimulating properties, and for its sebum flow regulative action

**Pelvetia Canaliculata**, known for its anti-stress, stimulating and cleansing properties



# BIO-ENERGIZER® - Summary

## **ACTIONS**

Hair vitality

Stimulation of microcirculation in combination to a scalp massage

## **RESULTS**

Increase in hair growth

Increase in hair density

# BIO-ENERGIZER® - *In vivo test protocol*

Study on 9 subjects (22 to 32 years old) with a chronic hair loss.

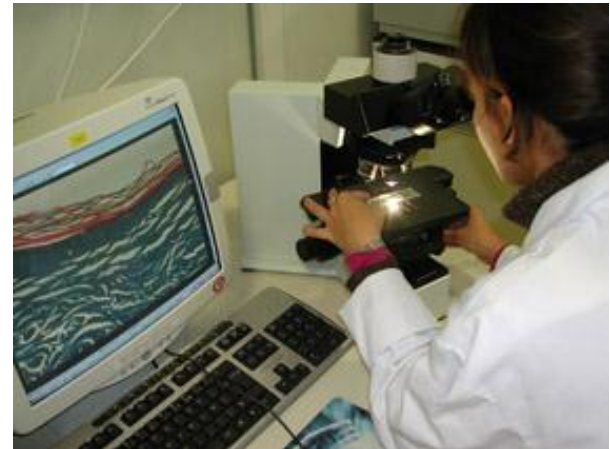
Hairs are cut on 2 zones, of 5 x 5 mm each (control and treated).

Application on scalp twice a day for 2 months.

Pictures of each zone are recorded. Density measured with a video microscope.

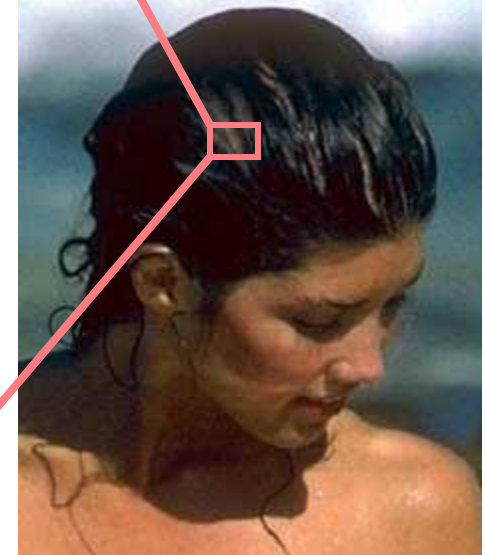
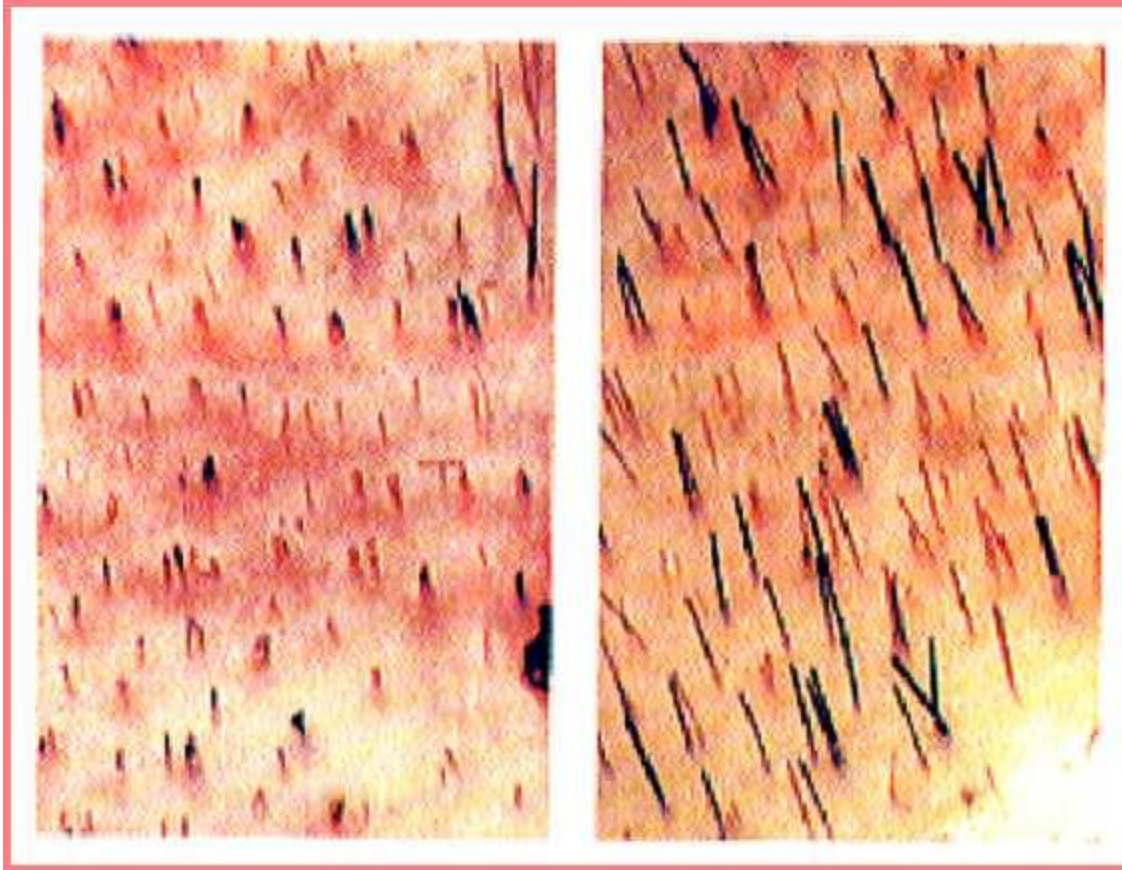
Calculation of:

- Hair **density**
- Hair **length** improvement



# BIO-ENERGIZER® - *In vivo* test results

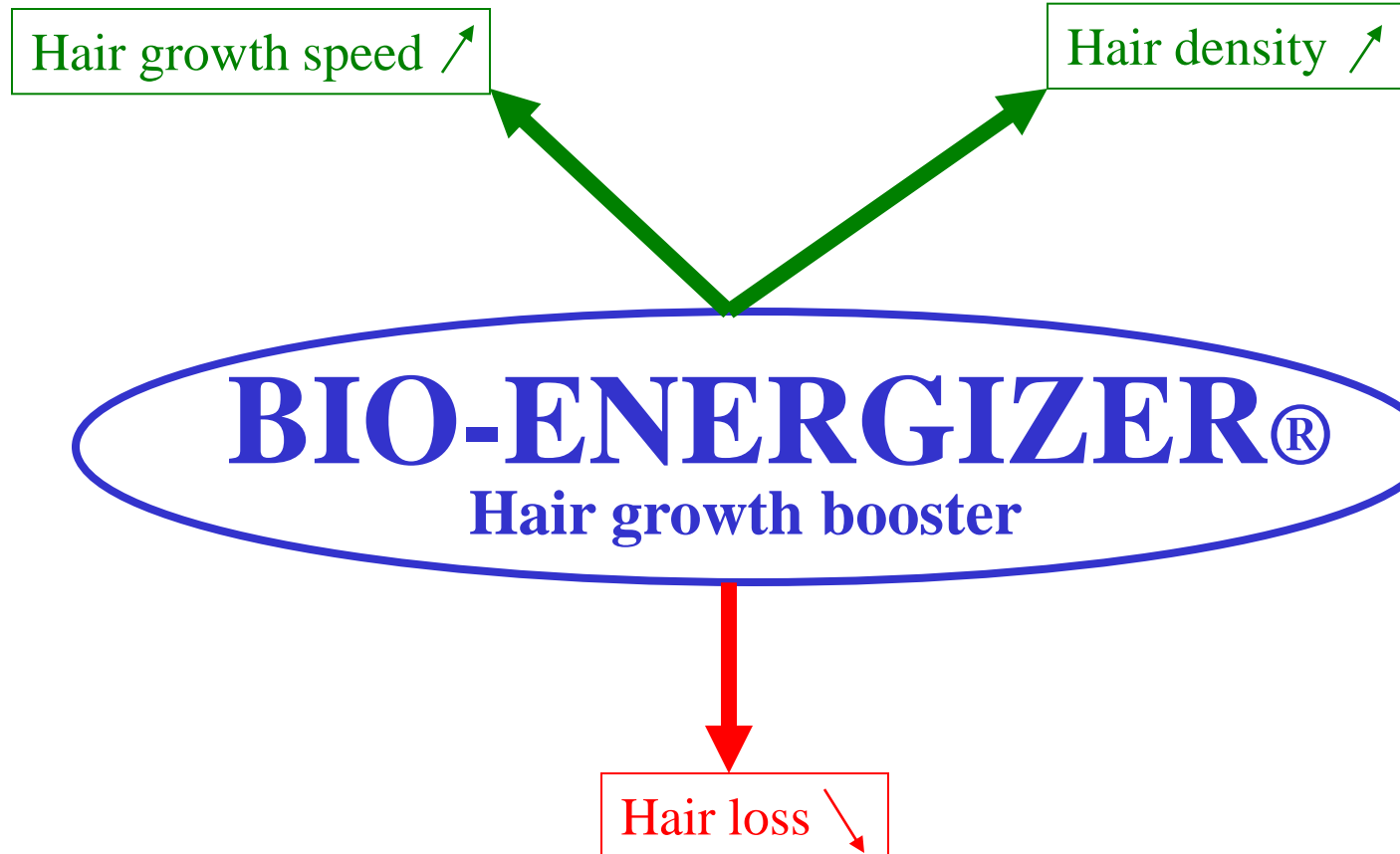
## Bioenergizer effect on the hair growth speed and density



**Hair density + 10 %**

**Hair growth + 27 %**

# BIO-ENERGIZER® - *Cosmetic benefits*





# BIO-ENERGIZER® - Applications

Hair care stimulating products

Leave-on products

Treatments

Mascara