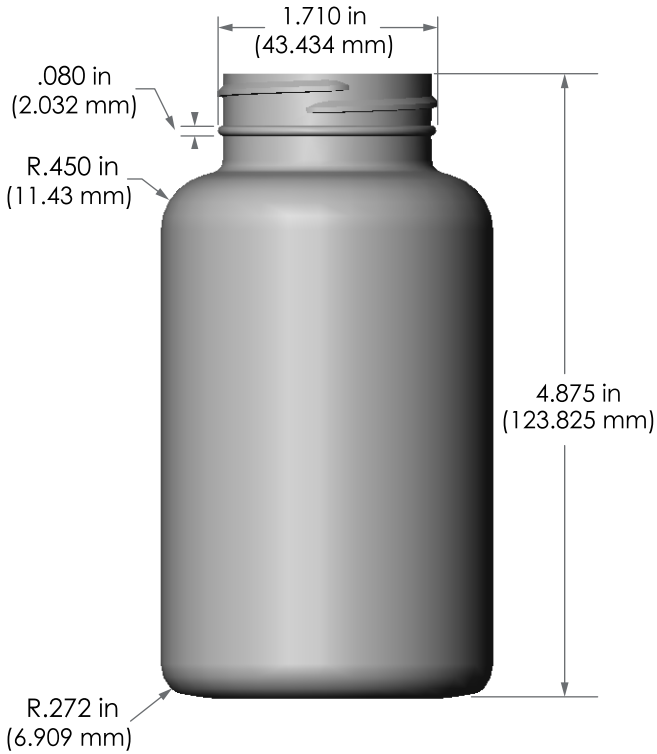


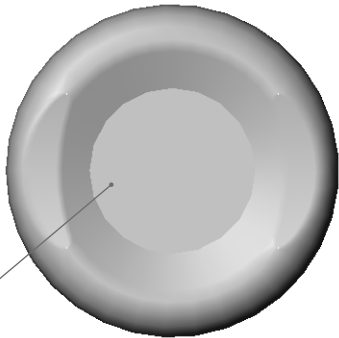
Neck Details:

T:	1.725 ±.015 in	(43.815 mm)
E:	1.631 ±.015 in	(41.427 mm)
I:	1.511 ±.015 in	(38.379 mm)
H:	.403 ±.015 in	(10.236 mm)



Approximate
Fill Level
300 cc (300 ml)

Label Specs
see below



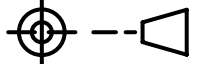
recycle logo, Aaron's logo
& cav. no. engraved.

NOTE: SIZES ARE PRELIMINARY AND
SUBJECT TO DEVELOPMENT

Unless otherwise
specified,
all dimensions
are in inches.

Tolerances :
angular ± 3°
x.xx ± 0.060"
x.xxx ± 0.050"

Target Weight: 25 +/-2g



Revised: 9/26/23	Label specs, gen update
Revised: 1/25/18	logo, specs, weight

300cc HDPE Packer (45-400)	
Material: High Density Polyethylene (HDPE)	
Neck: 45-400	Fill Vol: 300cc (300ml)
Scale: 1 : 1.5	Overflow: 342ml +/- 9ml
 Aaron Packaging 4000 150th Avenue Court East Sumner, WA 98390 360-889-0152 www.aaronpackaging.com	
Drawn by: DC	Dwg. no. 3757
Created: 8/05/17	

Label Specs:

7.625 in (193.675 mm) L x 3.32 in (84.328 mm) H x .08 in (2.03 mm) CR
 Note: Length accounts for .125 in space between label ends.