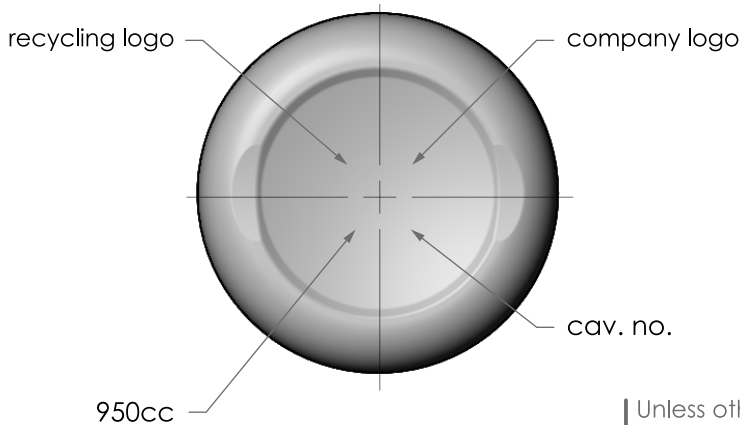
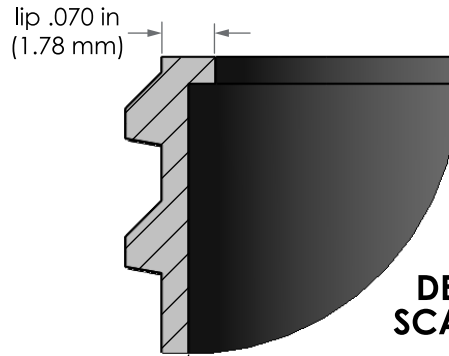
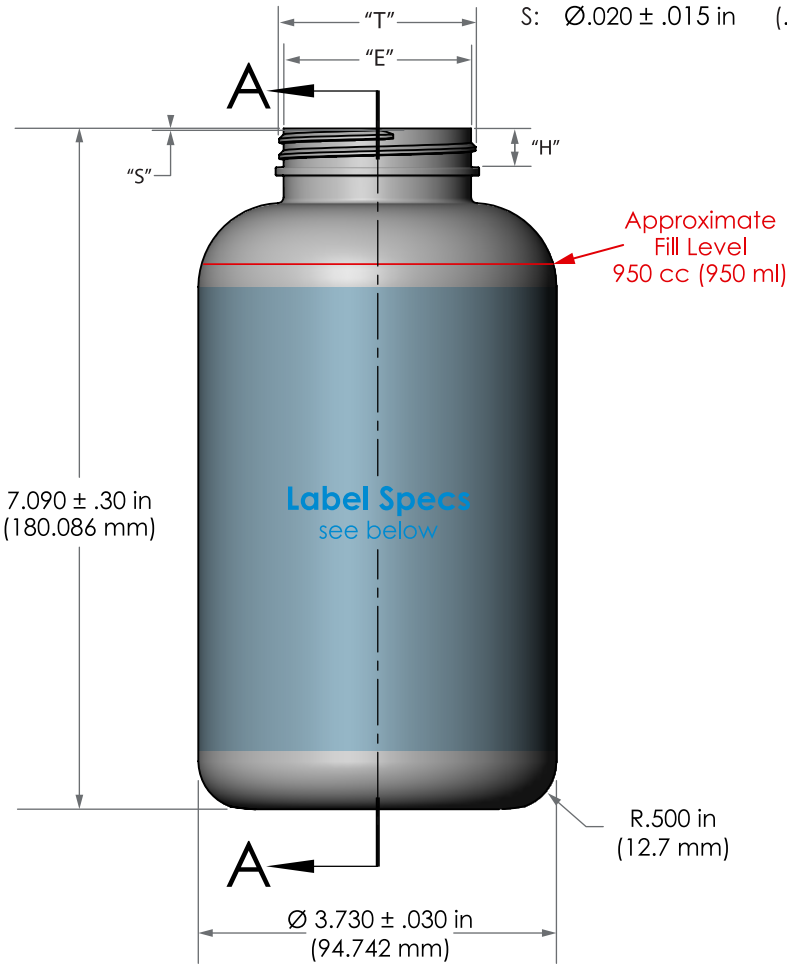
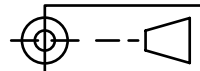


Neck Details: M-style, 6TPI, 1.5 turns

T: $\varnothing 2.049 \pm .017$ in (52.0446 mm)
 E: $\varnothing 1.955 \pm .017$ in (49.657 mm)
 H: $\varnothing .404 \pm .015$ in (10.2616 mm)
 S: $\varnothing .020 \pm .015$ in (.508 mm)



Target Weight: $60 \pm 2g$



| | |
|-----------------|-------------------------|
| Revised: | |
| Revised: | |
| Revised: | |
| Revised: 4/4/24 | logo, address, mold no. |

950cc HDPE AP Packer (53-400)

| | |
|--|------------------------------|
| Material: High Density Polyethylene (HDPE) | |
| Neck: (53-400) | Fill Vol: 950cc (950ml) |
| Scale: 1 : 2 (4:1) | Overflow: 1063.5 cc +/- 15cc |



Aaron Packaging
 4000 150th Avenue Court East
 Sumner, WA 98390
 360-889-0152
 www.aaronpackaging.com

| | |
|--------------------|-----------------|
| Drawn by: WC | Dwg. no. : 4039 |
| Created: 11/6/2023 | Mold no. : |

Note: Sizes are preliminary and subject to development.

Unless otherwise specified, all dimensions are in inches.

Tolerances :
 angular \pm
 $x.xx \pm 0.060$ "
 $x.xxx \pm 0.050$ "

Label Specs:

11.593 (294.462 mm) L x 4.825 in (122.555 mm) H x .08 in (2.03 mm) CR
 Note: Length accounts for .125 in space between label ends.