

Approximate
Fill Level
16 oz (474 ml)

- Notes:**
1. M-Style thread, 6TPI, 1 turn
 2. The height of bottle is adjusted to adapt to caps.

Neck Details:

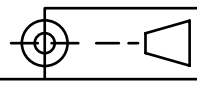
T:	Ø 2.444 +/- .015 in	(62.08 mm)
E:	Ø 2.350 +/- .015 in	(59.69 mm)
I:	Ø 2.02 +/- .012 in	(51.308 mm)
H:	Ø .630 +/- .015 in	(16.002 mm)
S:	Ø .046 +/- .015 in	(1.168 mm)
J:	Ø .474 +/- .015 in	(12.04 mm)

Body Details:

A:	Ø 1.112 +/- .015 in	(28.245 mm)
B:	Ø 6 +/- .012 in	(152.4 mm)
C:	Ø 3.9 +/- .012 in	(99.06 mm)
D:	Ø 2.58 +/- .015 in	(65.532 mm)
F:	Ø .825 +/- .015 in	(20.96 mm)

Label Specs
see below

Target Weight: 33 +/- 2 g



Revised:	
Revised:	
Revised:	
Revised: 11/13/23	logo, label specs

16oz PP Spice Bottle (63-485)

Material: Polypropylene (PP)	
Neck: 63-485	Fill Vol: 16 oz (474 ml)
Scale: 1 : 1	Overflow: 485 ml +/- 7 ml



Aaron Packaging
4000 150th Avenue Court East
Sumner, WA 98390
360-889-0152
www.aaronpackaging.com

Drawn by: WC	Dwg. no. : 4012-16
Created: 12/15/22	Mold no. :

Unless otherwise specified, all dimensions are in inches.

Tolerances :
angular ± 3°
x.xx ± 0.060"
x.xxx ± 0.050"

Note: Sizes are preliminary and subject to development.

Label Specs:
7.683 in (195.15 mm) L x 4.072 in (103.429 mm) H x .08 in (2.03 mm) CR
Note: Length accounts for .125 in space between label ends.