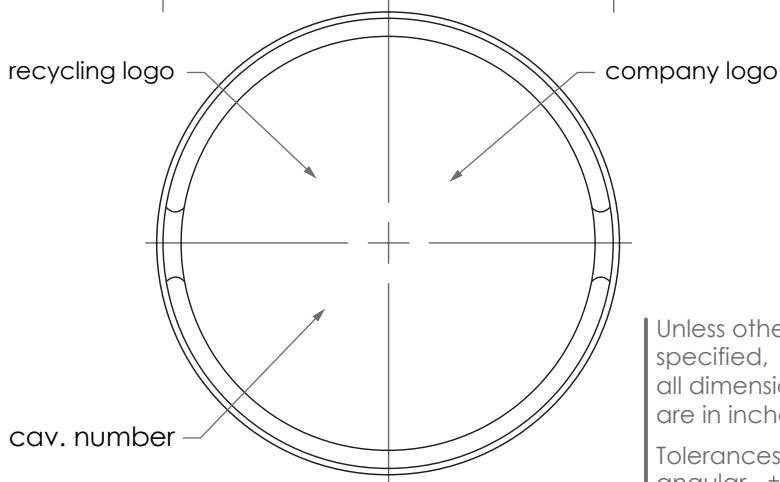
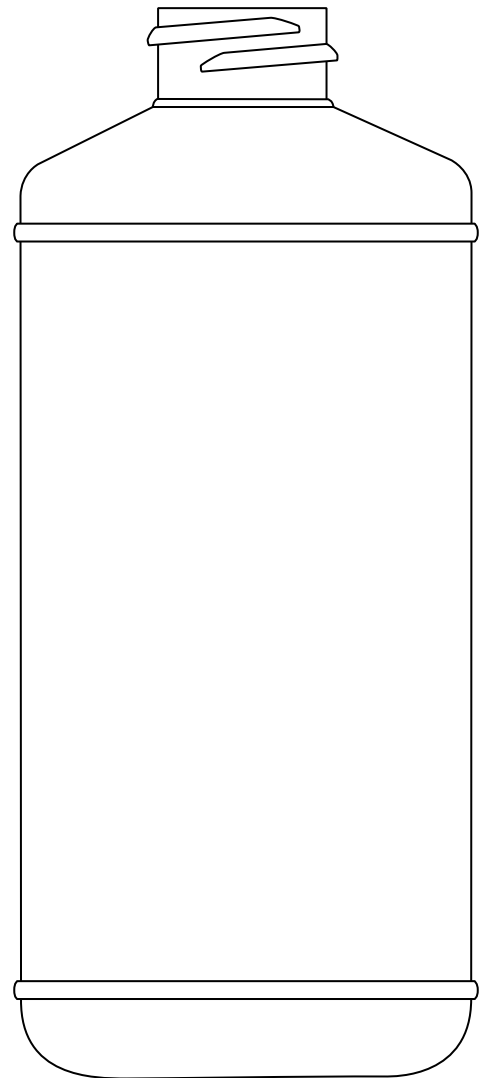
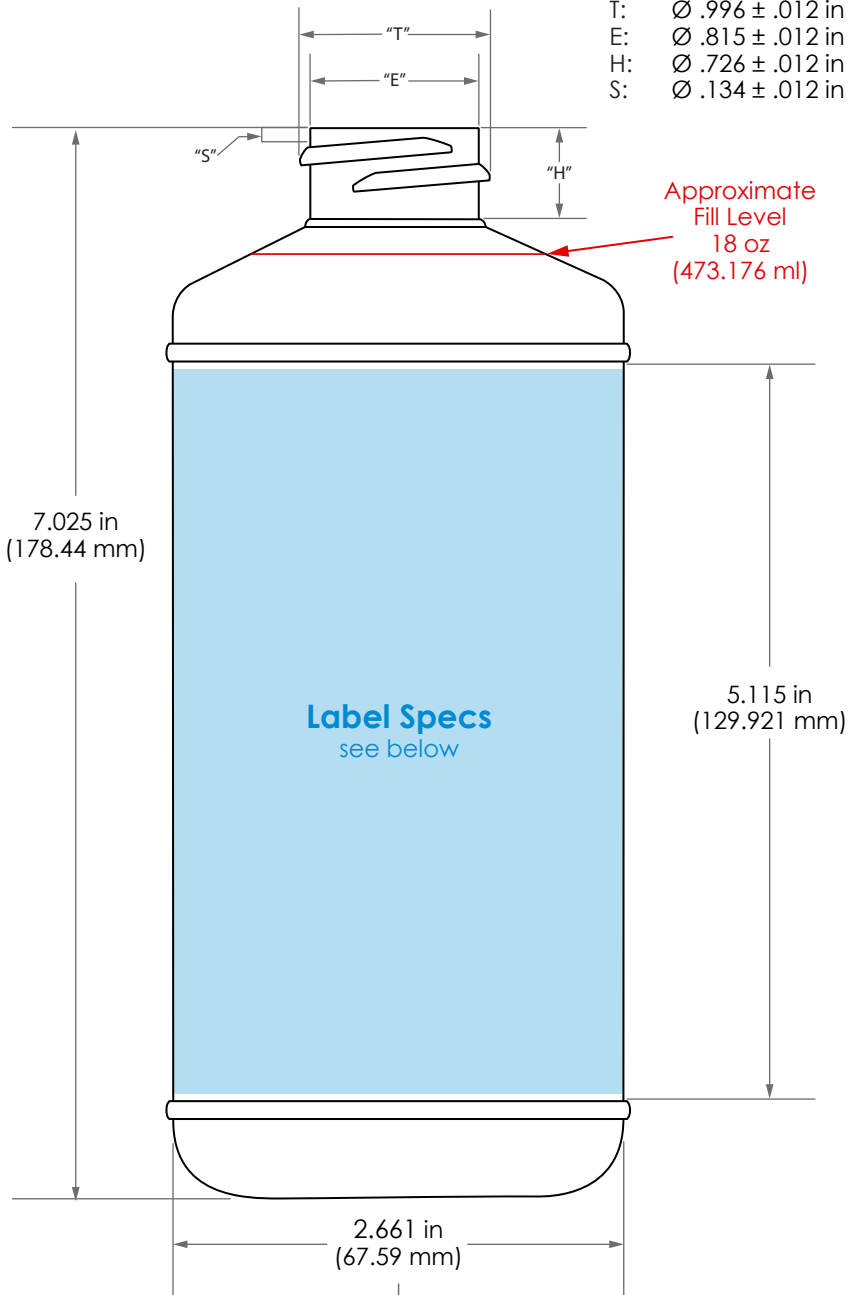


Neck Details:

T: $\varnothing .996 \pm .012$ in (39.624 mm)
 E: $\varnothing .815 \pm .012$ in (37.186 mm)
 H: $\varnothing .726 \pm .012$ in (10.236 mm)
 S: $\varnothing .134 \pm .012$ in (1.1684 mm)

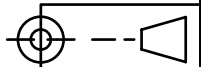


Unless otherwise specified, all dimensions are in inches.

Tolerances :
 angular \pm
 x.xx ± 0.060 "
 x.xxx ± 0.050 "

Note: Sizes are preliminary and subject to development.

Target Weight: 16 +/- .5g



Revised:	
Revised:	
Revised: 11/15/24	update drawing, specs
Revised: 5/12/21	logo, label specs

16oz HDPE Modified Cylinder Round (28-410)

Material: High Density Polyethylene (HDPE)	
Neck: 28-410	Fill Vol: 16 fl oz (176 ml)
Scale: 1 : 1	Overflow: 538 ml +/- 11 ml



Aaron Packaging
 4000 150th Avenue Court East
 Sumner, WA 98390
 360-889-0152
 www.aaronpackaging.com

Drawn by: Rob A.	Dwg. no. : 4023
Created: 8/19/15	Mold no. :

Label Specs:

8/38 in (212.85 mm) L x 5 in (127 mm) H x .08 in (2.03 mm) CR
 Note: Length accounts for .125 in space between label ends.