

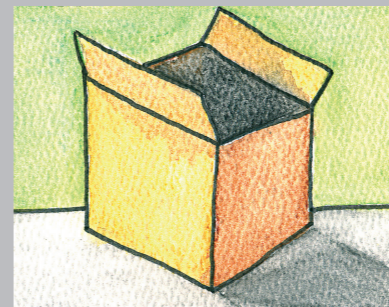
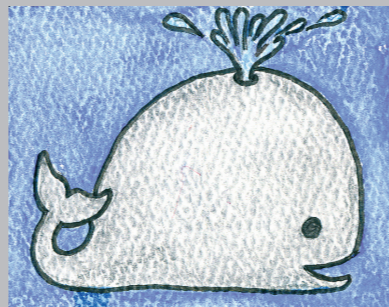
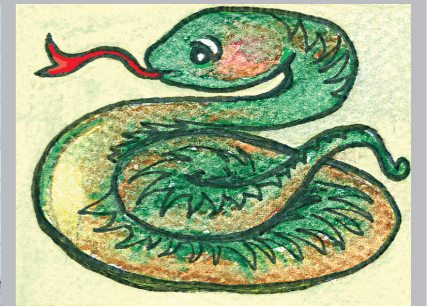
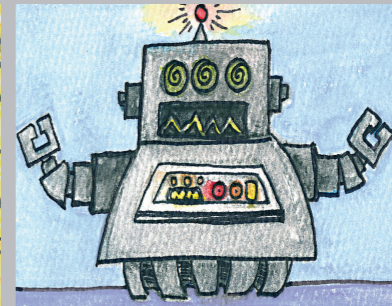
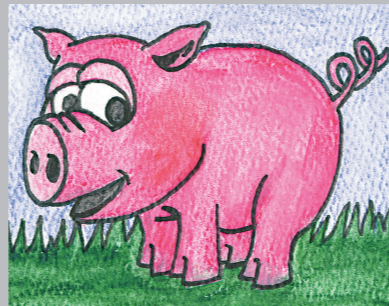
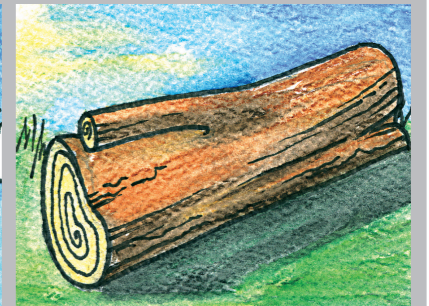
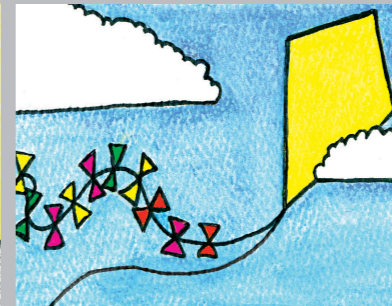
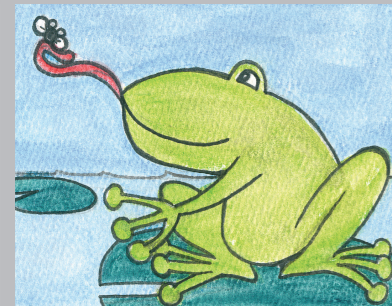
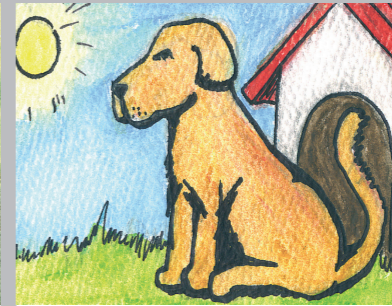
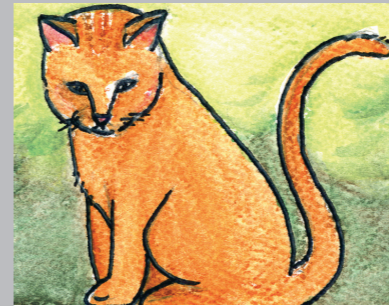
The Fitzroy Phonically Correct **ALPHABET CHART** SIDE 1

<p>There are 26 letters in the alphabet.</p>						
	<p>a A</p>	<p>b B</p>	<p>c C</p>	<p>d D</p>	<p>e E</p>	
						
<p>f F</p>	<p>g G</p>	<p>h H</p>	<p>i I</p>	<p>j J</p>	<p>k K</p>	<p>l L</p>
						
<p>m M</p>	<p>n N</p>	<p>o O</p>	<p>p P</p>	<p>q Q</p>	<p>r R</p>	<p>s S</p>
						
<p>t T</p>	<p>u U</p>	<p>v V</p>	<p>w W</p>	<p>box X</p>	<p>y Y</p>	<p>z Z</p>

- * Write the small letters.
- * Write the capitals.
- * Now you are ready to post the chart on your wall.



a A



bo...

