



# DryBuddyEZ+

Good Things Happen with DryBuddy™

Raising the Standards  
for Performance and Value.

Enuresis Solutions, LLC  
51 W. Fairmont Avenue, Suite 2  
Savannah, GA 31406 USA  
912-352-8854  
service@drybuddy.com

EC REP

Advena Ltd.  
Tower Business Centre, 2nd Flr.,  
Tower Street, Swatar, BKR 4013 Malta

The DryBuddy1 is designed in USA. Assembled in China.  
©2016 by Enuresis Solutions, LLC

## WARRANTY:

The DryBuddyEZ+ alarm box and sensor have a limited warranty for a period of one year starting from the date of purchase. Any breach or breaking of any part of the DryBuddyEZ+ box or sensor/cable voids the warranty. Warranties do not apply to batteries. All genuinely defective items will be exchanged for similar items, while under warranty, by Enuresis Solutions, LLC. Products cannot be returned for refund unless they are absolutely new and unused, and the containing box has not been opened. Refunds must be requested within twenty days of the purchase date. This is the essence of the warranty. Additional details for the warranty, warranty repairs, and refunds can be obtained by sending an email to service@DryBuddy.com.

## SUPPORT:

email: service@DryBuddy.com  
telephone: 912-352-8854

The DryBuddyEZ+ is designed in USA.  
Assembled in China.

Enuresis Solutions, LLC  
51 W. Fairmont Avenue, Suite 2  
Savannah, GA 31406 USA  
912-352-8854  
service@drybuddy.com

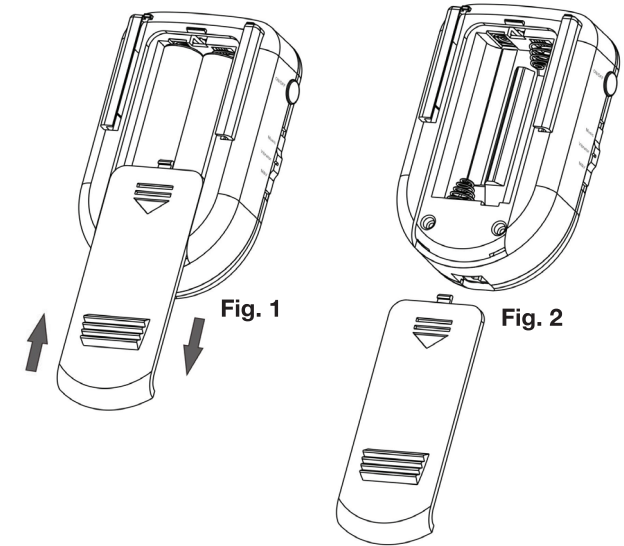
EC REP

Advena Ltd.  
Tower Business Centre, 2nd Flr.,  
Tower Street, Swatar, BKR 4013 Malta

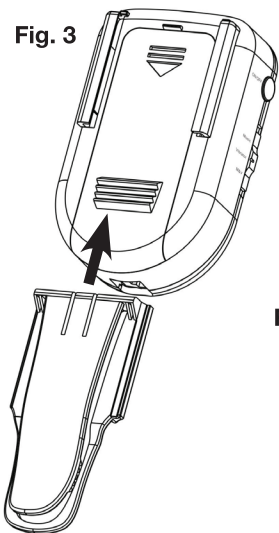
© Copyright 2012-2016 by Enuresis Solutions, LLC

## 1 Starting with the DryBuddyEZ+

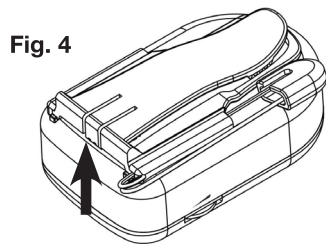
To insert OR change BATTERIES slide out the back cover of the alarm box. Insert or replace two AAA alkaline batteries using the correct polarities. (Fig. 1 & 2)



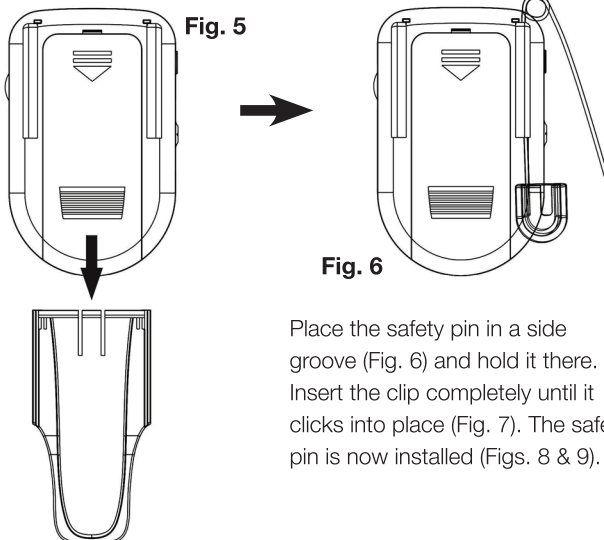
Attach the CLIP by sliding the clip all the way in its groove till it CLICKS at its stop and cannot move. (Fig. 3)



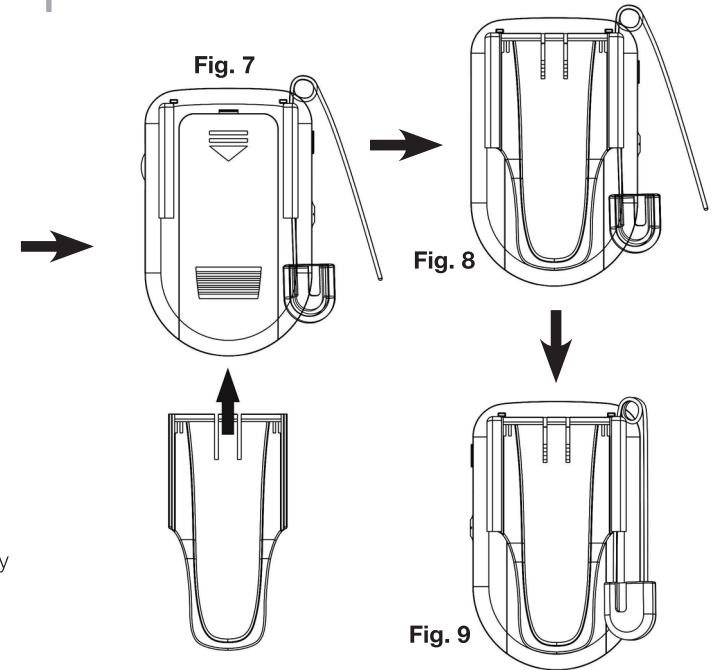
Remove the CLIP by pushing up on the center portion at the upper end of the clip, then slide it down and out. (Fig. 4 & 5)



Release the CLIP by pushing up on the center portion of the upper end of the clip (Fig. 4), then remove the clip by sliding it down and out (Fig. 5).



Place the safety pin in a side groove (Fig. 6) and hold it there. Insert the clip completely until it clicks into place (Fig. 7). The safety pin is now installed (Figs. 8 & 9).



## 2 Attaching the DryBuddyEZ+

If you are going to attach the DryBuddyEZ+ around the collar of the sleep shirt, attach the CLIP. If you wish to use the safety pin to attach the DryBuddyEZ+ anywhere on the surface of the shirt, attach the safety pin and CLIP.

Attach the sensor by inserting its "telephone plug" into the socket at the end of the DryBuddyEZ+ box (Fig. 10)

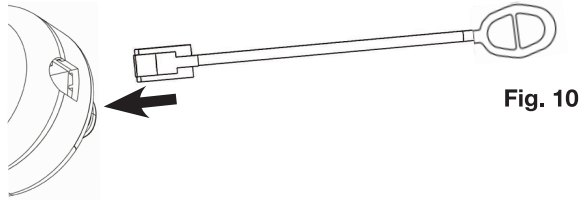


Fig. 10

Insert the sensor cable through the open neck/collar of the shirt.

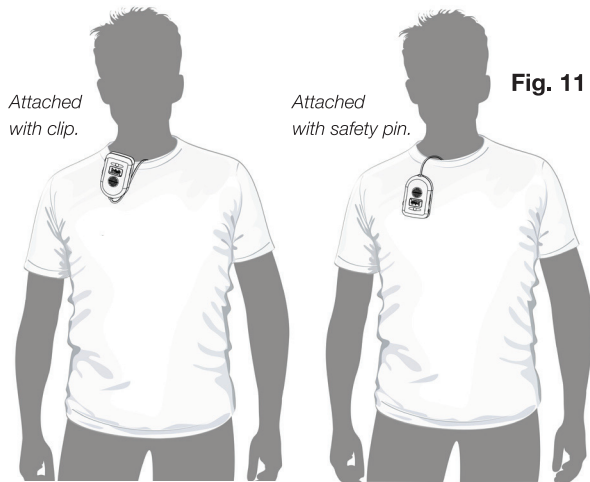


Fig. 11

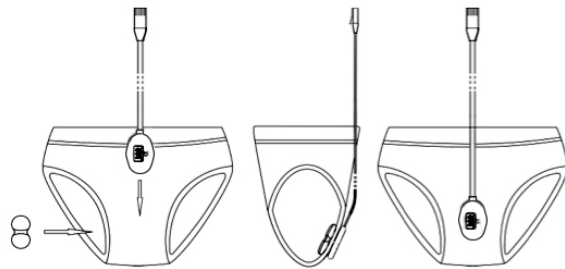


Fig. 12a

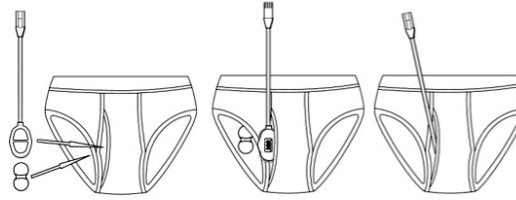
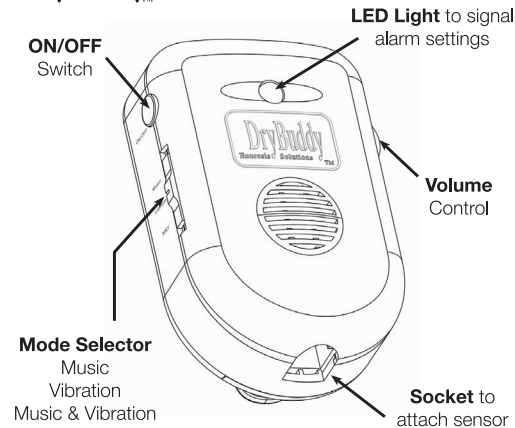


Fig. 12b

The sensor attaches very easily to cotton briefs by placing the sensor on the outside of the briefs with the magnets facing the briefs. The magnetic "cap" is placed inside the briefs and locks the sensor to the briefs, with the briefs being held between the face of the sensor and its cap. The sensor should be located on the briefs at the point of urination or just below it so that the urine flows over the edges of the cap and soaks the cloth. The sensor can be placed horizontally instead of vertically if that suits the user. When the briefs are wet between the two round magnets, the sensor will trigger the alarm.

## 3 DryBuddyEZ+ Controls



Press the ON/OFF button once, to turn the DryBuddyEZ+ ON or OFF or OFF. When the DryBuddyEZ+ is turned ON, the LED will light GREEN for about 2 seconds. When it is not in use, please turn it OFF.

The DryBuddyEZ+ can be set to produce MUSIC, VIBRATION, or MUSIC+ VIBRATION alternately. Slide the mode switch to set to Music (M), Vibration (V), or Music+Vibration (M+V).

## Caution when using the DryBuddyEZ+

1. The DryBuddyEZ+ alarm is intended for use as a bed-wetting and enuresis alarm by children of age five and older, or as recommended by a medical authority. It can be used by older patients as a urine sensor and wetness alarm.
2. Do not use as a potty training aid for babies, toddlers and young children.
3. Make certain that no parts of the DryBuddyEZ+ or sensor are put in the mouth for any reason as this could cause choking or other harm.
4. Observe all sanitary precautions to keep the sensor clean and the alarm parts clean and dry.
5. Do not use the sensor for more than one user without thorough cleaning.
6. Do not strike the magnetic sensor or cap on hard surfaces or make them hot as this can reduce magnetism.
7. The DryBuddyEZ+ is designed to sense urine or salty water. It is less effective in sensing plain water.

When the briefs are wet, the alarm will be turned on as per its setting. The LED will be RED while the alarm sounds or vibrates.

- For **Music**, it will sound for one minute, be silent for 30 seconds. This ON/OFF cycle is conducted five times.
- For **Vibration**, it will vibrate for two seconds, stop for 3 seconds, and repeat for one minute. It will stay off for 30 seconds. This cycle is conducted five times.
- For **Music+Vibrator**, the music sounds for a few seconds, followed by the vibrator for a few seconds, and will repeat for one minute. It will stay off for 30 seconds. This sequence is conducted five times.

To set the **Volume**, set the mode to Music, depress the ON/OFF switch, and adjust volume using the volume wheel on the opposite side of the box while keeping the ON/OFF switch depressed.

When the briefs are wet, the alarm will be turned on as per its setting. To cancel the alarm, press the ON/OFF button.

To clean the sensor and its cap, wash gently in warm or cold water using a soft soap. Dry with a soft cloth.

**Low Battery Indicator:** When the ON/OFF button is pressed, or the alarm is sounding, the LED will show YELLOW to indicate that the batteries are low and should be changed.