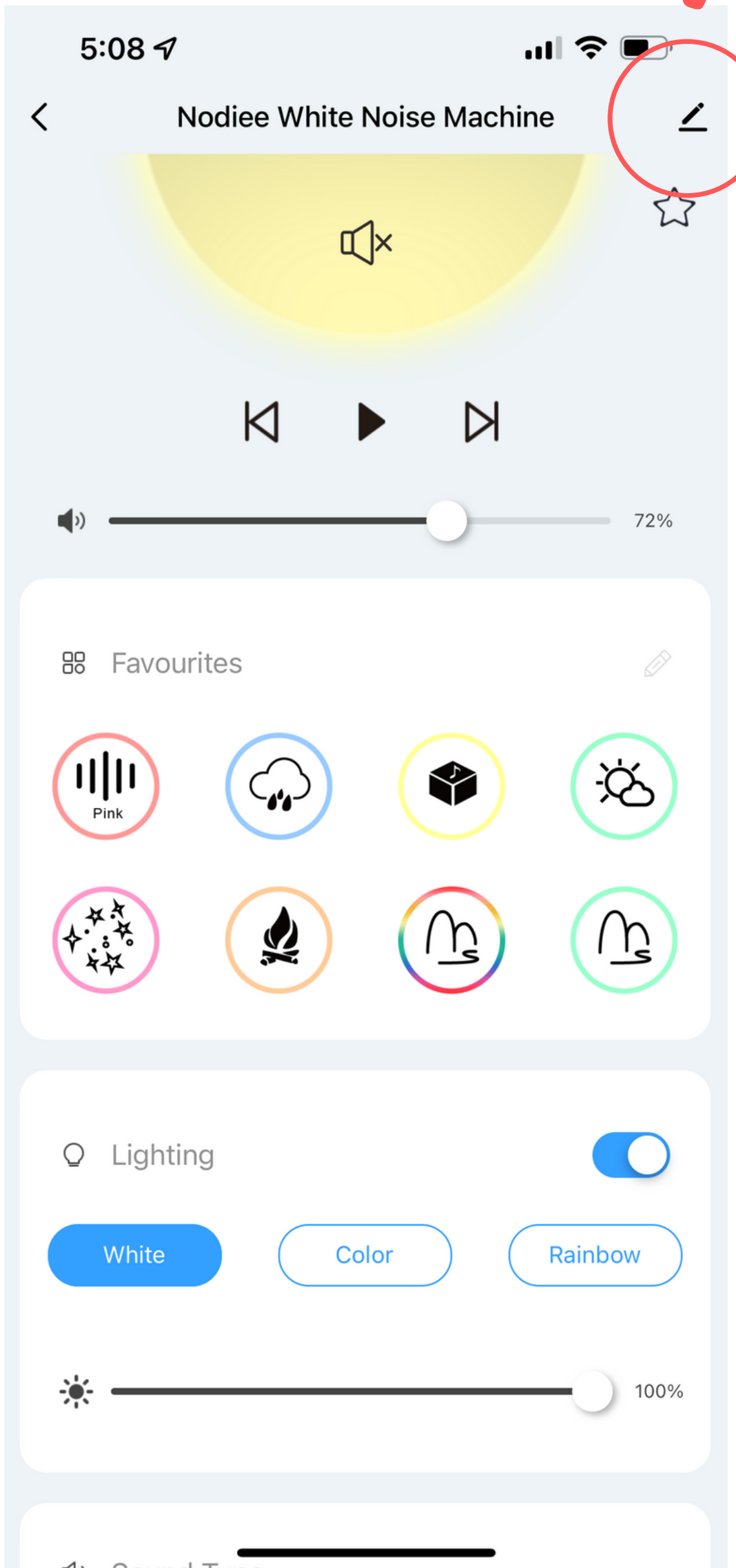


# STEP 1

From the apps home screen  
tap the pencil icon in the top  
right hand corner



# STEP 2

Scroll down and select  
"Remove Device"

5:09 ↗



Tap-to-Run and Automation >

Third-party Control



Alexa



Google Assistant

Device Offline Notification

Offline Notification



Others

Share Device >

Create Group >

FAQ & Feedback >

Add to Home Screen >

Check Device Network

Check Now >

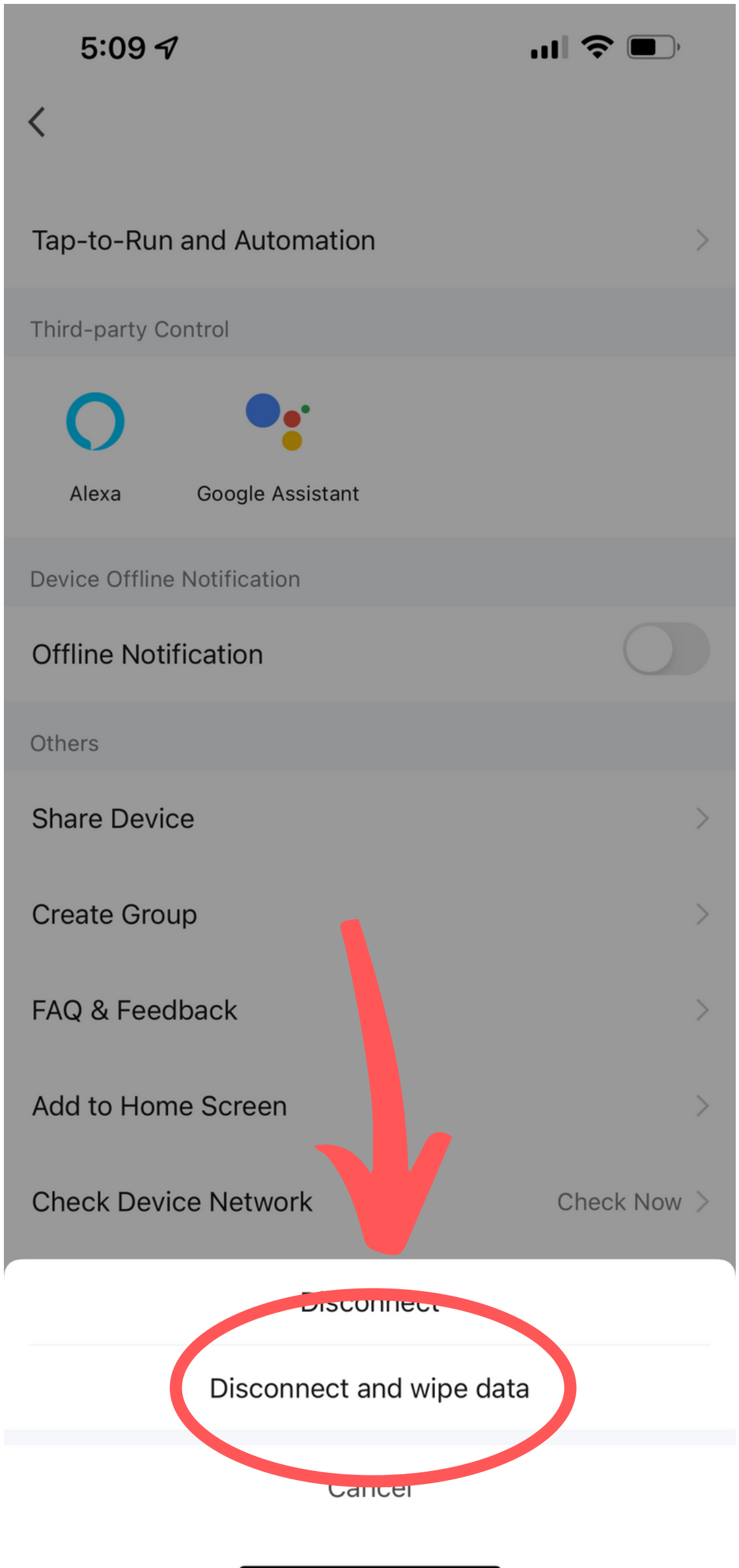
Device Update

No updates available >

Remove Device

# STEP 3

Select "Disconnect and wipe data"  
It's important that you wipe the data  
to clear any potential issues.



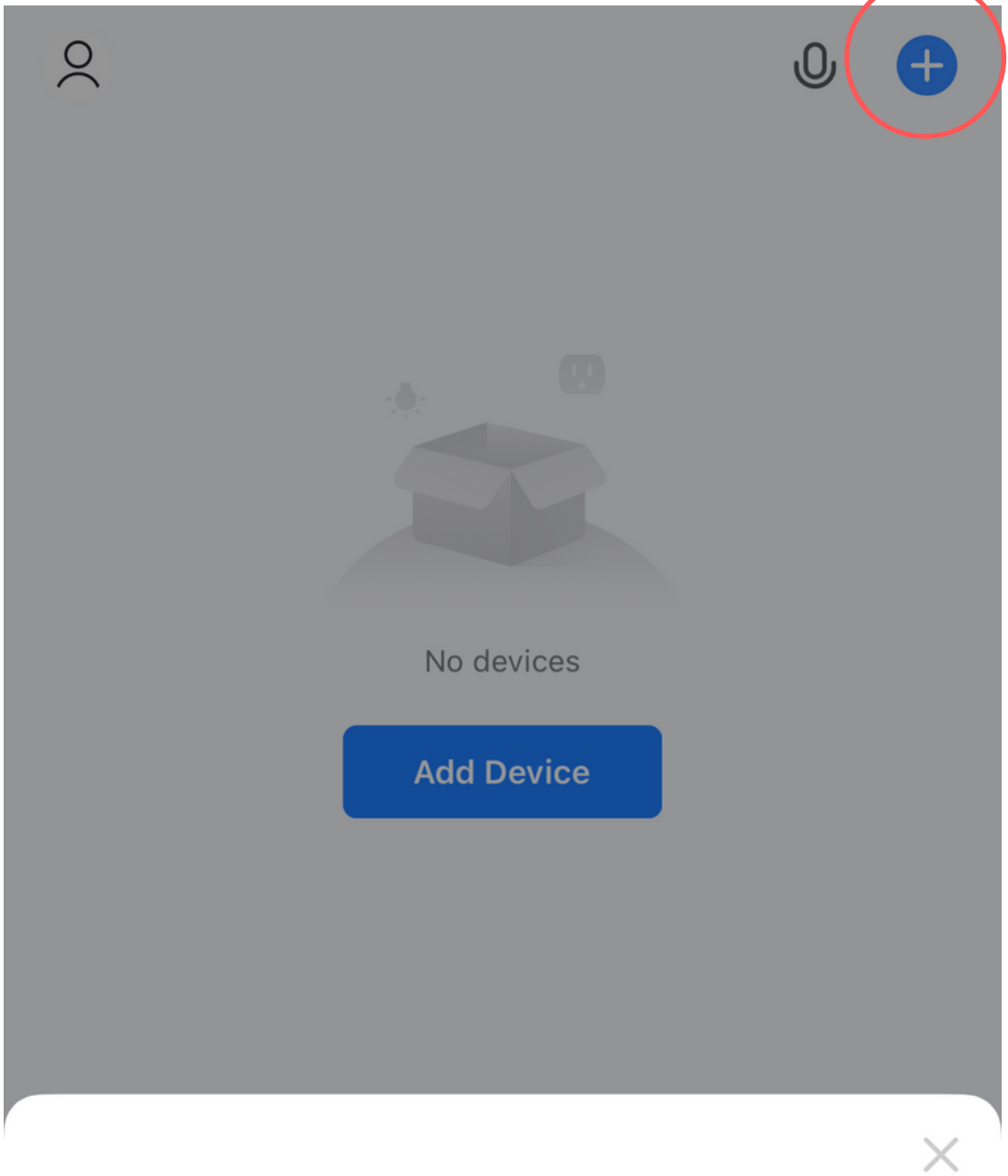
# STEP 4

Reconnect the device.

Hold the timer button down on the device until the status light is rapidly flashing.

After a few seconds you should be promoted to add the device.

If not, select the + icon



Devices to be added: 1



Nodiee White  
Noise Machine

Add