

Cautions

- Refer to your therapy device manual for details on settings and operational information.
- The technical specifications of the mask are provided for your clinician to check that they are compatible with the therapy device. If used outside specification, the seal and comfort of the mask may not be effective, optimum therapy may not be achieved, and leak or variation in the leak rate may affect device function.
- The mask should be cleaned every other day to prevent dirt and oil contamination from the skin building up on the mask.
- The mask should not be cleaned with unapproved cleaning or disinfecting methods.
- The user should clean their face prior to wearing the mask.
- The user should not alter the design of the mask.
- Do not place the mask in a clothes dryer.
- In the USA, federal law restricts this device to sale by, or on the order of, a physician.

Contraindications

- The SleepWeaver Anew is not intended to be used by those patients that are taking prescription drugs that may cause vomiting.
- The SleepWeaver Anew may not be suitable for persons with the following conditions: impaired cardiac sphincter, excessive reflux, impaired cough reflex, or hiatal hernia.

Technical Specifications

1. Therapy pressure range
4 to 30 cmH₂O
2. Resistance (pressure drop) with AAV closed to atmosphere
@ 50 l/min = 0.3 cmH₂O @ 100 l/min = 0.4 cmH₂O
3. Inspiratory and expiratory resistance with AAV open to atmosphere
Inspiration @ 50 l/min = 1.8 cmH₂O Expiration @ 50 l/min = 1.7 cmH₂O
4. Anti-Asphyxia Valve (AAV) operation:
Open to atmosphere @ 1.6 cmH₂O Closed to atmosphere @ 2.1 cmH₂O
5. Fixed leak rate (flow may vary due to manufacturing variation):

Pressure (cm H ₂ O)	4	5	10	15	20	25	30
Flow (lpm)	16	18	30	41	50	58	67

6. Environmental storage and operating conditions are not expected to effect the function of this device.
7. Sound Levels
 - a. A-weighted Sound Power Level, 29 dBA
 - b. A-weighted Sound Pressure Level @ 1m, 21 dBA
8. 22mm Swivel Connection.
9. This device is expected to remain suitable for use under normal usage and cleaning conditions for a time period of at least 90 days.
10. The device is not made with natural rubber latex.

Limited Warranty www.circadiance.com/help



EMERGO EUROPE
Prinsessegracht 20,
2514 AP The Hague,
The Netherlands



0459

For patents and trademarks applicable to Circadiance products, please visit www.Circadiance.com/IP

101083 REV 6



SleepWeaver
Soft Cloth Masks

Anew[®]

Instructions for Use

English

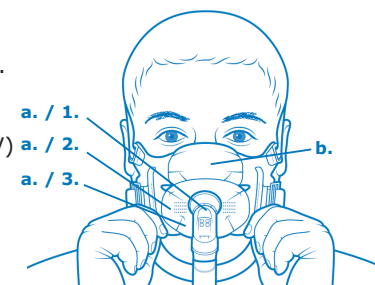
Intended Use

This SleepWeaver mask is intended to provide an interface for Continuous Positive Airway Pressure (CPAP) or bi-level therapy. This mask is intended for single-patient reuse in the home and in the hospital/institutional environment. This mask is to be used on patients greater than 66 lbs (30 kg).

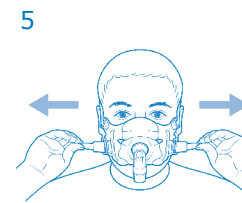
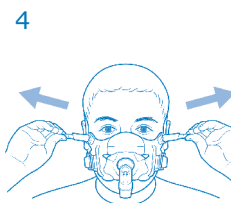
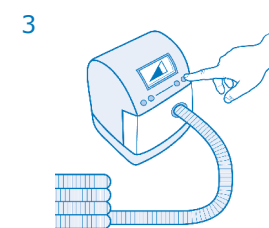
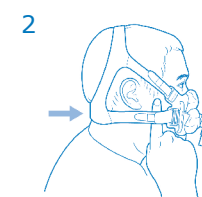


Mask Orientation

1. Remove your SleepWeaver Anew from the package.
2. Understand the proper orientation of the mask:
 - a. Oral interface covers your mouth
 1. Contains 90° Elbow Anti-Asphyxia Valve (AAV)
 2. Contains exhalation holes
 3. Contains mask size (Small, Regular, Large)
 - b. Nasal interface covers your nose



Fitting the Mask



Watch the Fitting Video

www.circadiance.com/help



Mailing Address: PO Box 17480, Pittsburgh PA 15235
Physical Address: 1300 Rodi Road Turtle Creek PA 15145
Phone: 888-825-9640 or +1 724-858-2837
cservice@circadiance.com www.sleepweaver.com

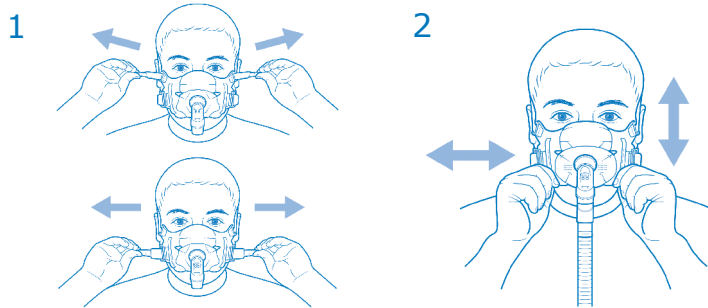
Fitting the Mask Continued

- Put the mask on by pulling the mask and headgear over your head.
 - Make sure all straps are attached to the headgear with all strap lengths at their widest setting.
 - Snap the longer straps to the quick release clips.
- The neck support of the headgear should sit comfortably on your neck.
IMPORTANT – DO NOT OVERTIGHTEN THE STRAPS. START WITH THE STRAPS LOOSE AND THEN TIGHTEN AS NECESSARY TO ACHIEVE AN AIR-TIGHT SEAL.
- Adjust the top straps so that the nasal interface of the mask is comfortably resting on your upper lip.
- Adjust the bottom straps so that the oral interface of the mask is comfortably in place.
 - It is helpful to slightly stick your lips out when tightening the bottom straps to ensure that the fabric is going around the lips and not over them.
- Attach one end of the 6' PAP Tube to the PAP Machine and attach the other end to the 90° Elbow AAV on the Anew mask.
- Turn the PAP machine on.
- Lie down in your normal sleeping position and if needed shift the mask around so that the fabric is able to form a seal against your skin. Additional adjustment tips are located in the following section and a detailed fitting video can be viewed at www.circadiance.com/help.

Adjusting for Leaks -


If you experience leaks, try these steps:


- Adjust the straps as necessary to achieve a comfortable seal.
- Wiggle the mask into place by shifting the mask left to right and up and down while gently pushing your nose into the nasal interface opening.



Cleaning the Mask

- Your SleepWeaver Anew should be cleaned by hand washing with a mild nonabrasive soap in warm water every other day. Never use hot water. Repeat washing until visibly clean. Hand wash the headgear weekly.
- Rinse well with drinking quality water and allow to air dry out of direct sunlight.
- You may keep the 90° Elbow AAV attached during cleaning or you may remove it and clean it separately. Refer to the "Attaching the 90° Elbow with AAV" if removed for cleaning.

 The anti-asphyxia valve is designed to open to atmosphere if the system loses pressure. The user must verify the AAV is able to move between the open and closed position before each use. The user must clean the anti-asphyxia valve daily to ensure all secretions are removed and that the holes to atmosphere are not covered or blocked. Do not block or disable the AAV.

 Inspect all parts for damage or wear after each cleaning and before each use.


Attach Mask to Headgear

- If the mask is not attached to the headgear, attach as follows:
 - The white label is located on the back of the headgear.
 - Attach the smaller top straps to the nasal portion of the mask.
 - Snap the longer straps to the quick release clips.
 - Ensure that all strap lengths are at their widest setting for initial fit.

Attaching the 90° Elbow with AAV

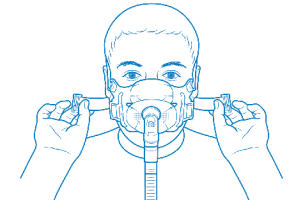
- Slide the "Thread" piece through the opening from inside the mask.
- Place the "Washer" piece over the "Thread" piece.
- Ensure that the fabric does not ride up onto the "Thread" piece.
- Screw the "Nut" piece onto the "Thread" piece.



 The 90° Elbow with AAV is a safety feature of the SleepWeaver Anew. Use only the AAV supplied with your mask. Do not substitute any other elbow or AAV.

Quick Release

- The SleepWeaver Anew was designed with two quick release clips to remove the mask quickly.
- Practice removing and attaching your mask by using the quick release clips.



Warnings

- The device is a vented mask and should not be used with a dual limb ventilation circuit.
- If there are any reactions to any part of this mask or headgear, discontinue use immediately.
- This system should not be used unless the therapy device is turned on and is operating properly.
- The vent holes should never be blocked.
- The mask is for single patient reuse only and is not approved for reprocessing (cleaning and disinfecting methods) in the clinical setting. For both the home and clinical setting, only the cleaning methods outlined in these instructions should be utilized.
- Ensure the mask is put on correctly. Ensure the mask and headgear are assembled and positioned as shown on the front page of these Instructions.
- If any visible deterioration of a system component is apparent (cracking, broken parts, tears, etc.), or if after cleaning and components remain unclean, the component should be discarded and replaced.
- Varying the frequency, method, or cleaning agent to clean this product other than what is detailed in these instructions may have an adverse effect on the mask and consequently the safety or quality of the therapy.
- Do not block or disable the AAV on the SleepWeaver Anew.
- The mask is not intended to be used on patients that are uncooperative, obtunded, unresponsive, or unable to remove the mask without clinical supervision.
- If the mask is being used with supplemental oxygen, the oxygen flow must be turned off if the machine is not operating because accumulated oxygen is a fire hazard.
- If the mask is being used with supplemental oxygen, the patient should refrain from smoking.
- To minimize the risk of vomiting during sleep, the patient should avoid eating or drinking for three hours before using the mask.