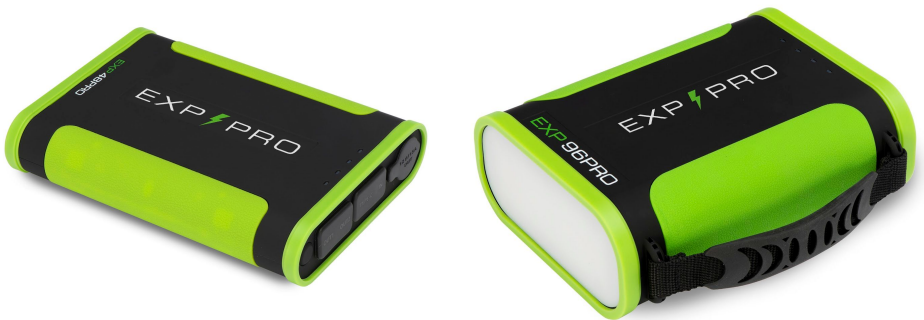


EXP PRO

EXP PRO Batteries Handheld Power EXP48PRO & EXP96PRO

User Manual



Power to Explore

www.EXPPROPOWER.com

Table of Contents

General Battery Information

1. Introduction
2. Description
3. Contents
4. Charging Your Battery
5. Other Information About Charging Your Battery
6. Charging Your Battery with the Optional 30 Watt Solar Panel
7. Capacity/Specifications
8. Powering From the DC Output Port
9. Pass-Through Technology
10. Parallel Connection of Batteries (Daisy Chaining)
11. Operating the White Light/Emergency Amber Flashing Light
12. Battery Management System (BMS)
13. Airline Travel
14. Battery Storage
15. Safe Use of Lithium Batteries
16. FAQs

CPAP User Information

17. Powering Your PAP Machine from the DC Output Port
(Recommended)
18. PAP Machine DC Power Cords
19. Powering Your PAP Machine from the AC Output Port (Using a
Pure Sine Inverter)
20. PAP Machine Runtimes
21. Notes

Warranty Information

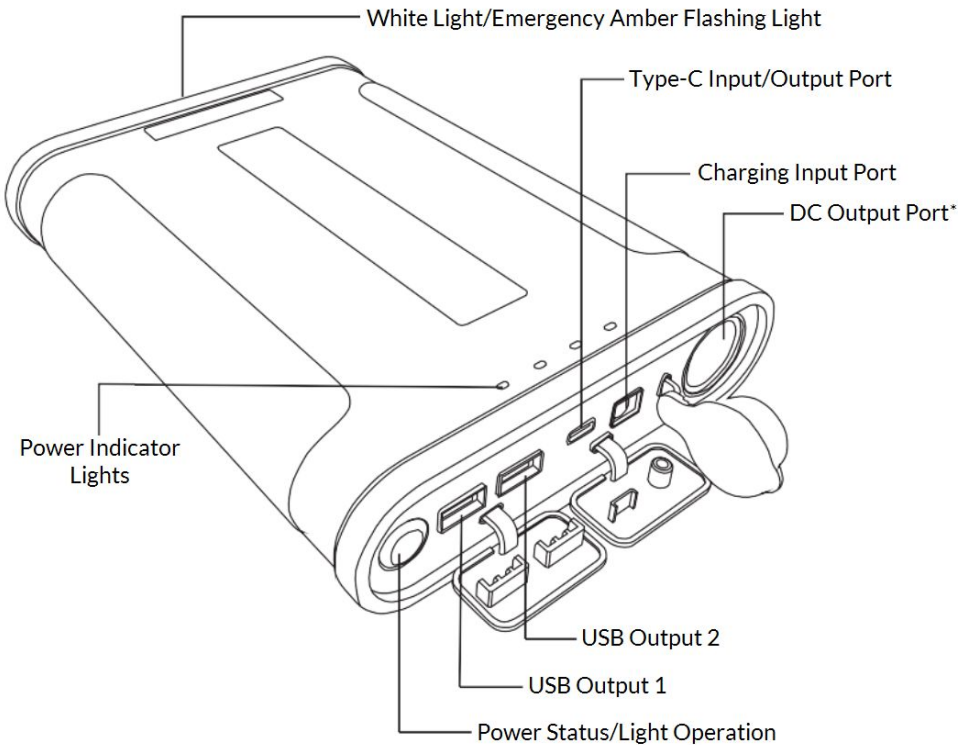
22. Limited Warranty

General Battery Information

1. Introduction

Thank you for purchasing an EXP PRO Battery. This instruction manual contains important information about usage and safety. Use the product as described and keep this manual for future reference. Before reading through the manual, you can begin to charge your EXP PRO Battery by connecting it to the AC power supply cord provided and plugging into a wall socket. See *Section 4 - Charging Your Battery*.

2. Description



*Please note the EXP96PRO Battery has 2 DC Output Ports

3. Contents

- EXP48PRO or EXP96PRO Battery
- Protective Sleeve for Battery
- AC Charger: Input 110V-240V / Output 15V@2A (2000mA)
- DC Charger: Input 12V-24V / Output 15V@2A (2000mA)
- User Manual

4. Charging Your Battery

- A. Select the method of charging. AC (plugs into the wall) and DC (plugs into the car) cords are both included.
- B. Plug the charging cable into the charging input port located on the battery and the other end into the appropriate power source.
- C. Charging will begin automatically.
- D. Battery is fully charged when all power indicator lights have been solidly lit for at least 30 minutes.
- E. Indicator Lights:
 - 1 light lit = 0-25% battery charge
 - 2 lights lit = 25-50% battery charge
 - 3 lights lit = 50-75% battery charge
 - 4 lights lit = 75-100% battery charge

5. Other Information About Charging Your Battery

- Never leave the battery unattended for long periods of time while charging.
- Do not charge below 32°F. Optimum ambient charge temperature is 40°F - 110°F.
- Do not charge the battery if the charge cord or battery has obvious damage or if the battery appears to be bulging. A bulging battery is a potential sign of damaged lithium cells.

- Do not charge the battery if it feels excessively hot. The battery should not reach more than 120°F while charging or discharging and should not feel hotter than a warm cup of coffee to the touch.

6. Charging Your Battery with the Optional 30 Watt Solar Panel

The EXP PRO 30 Watt Solar panel is designed to be a genuinely portable charging solution for the EXP48PRO and EXP96PRO Battery line. It is soft and foldable, allowing easy portability for your adventures. The panel will provide up to 18V @ 1.5A. It is ideally suited for outdoor life and the unexpected power outage.

- A. Open the solar panel and place it on a clean, dry, and flat surface in direct sunlight.
- B. Plug the solar charge cord into the Type-C Input/Output Port on the battery using the included USB-C to 2.1mm adapter.
- C. Charging will begin automatically.
- D. Expect longer charge times using the solar panel compared to the AC or DC charge cords as sun conditions will vary greatly.



7. Capacity/Specifications

Full capacity and specification information can also be found on the back of each battery.

- DC Output Port: DC12V@10A Continuous / 15A Peak (5Min)
- Type C Input: DC5V@3A / 9V@3A / 15V@3A / 20V@2.25A
- Type C Output: DC5V@3A / 9V@3A / 12V@3A / 15V@3A / 20.3V@3A
- USB Output 1: DC5V@2.4A
- USB Output 2: DC3.6V-6.5V@3A / 6.5V-9V@2A / 9-12V@1.5A

EXP48PRO: 153.6-Watt Hours (Wh) / 12.8 Amp Hours (Ah)
@ 12V / 48,000 Milli Amp Hours (mAh) @ 3.2V.



EXP96PRO: 307.2-Watt Hours (Wh) / 25.6 Amp Hours (Ah)
@ 12V / 96,000 Milli Amp Hours (mAh) @ 3.2V.



8. Powering From the DC Output Port

- A. Plug your device into the main round power port ensuring a secure fit, using a 12V cigarette style plug that is meant to power your device.
- B. The port(s) will automatically turn on and provide power to the connected device.
- C. To turn off the device, simply unplug it from the power port.

9. Pass-Through Technology

The EXP48PRO and EXP96PRO are equipped with “Pass Through” technology. This allows you to charge devices connected to the battery while the battery is being charged. The battery will automatically detect a power outage and switch to battery power. Please note to get the most life out of your EXP PRO battery, we suggest only using this option if there is concern about a potential power outage.

10. Parallel Connection of Batteries (Daisy Chaining)

You can parallel connect no more than two batteries by plugging in the provided DC charge cord to the charge port on one battery and the main power port marked 12V/15A on the other battery in order to double the available capacity.

11. Operating the White Light/Emergency Amber Flashing Light

White Light: Press and hold the power button to turn on. Press and hold the power button, again, to turn off.

Emergency Amber Flashing: Quickly press the power button twice to turn on. Quickly press the power button twice, again, to turn off.

12. Battery Management System (BMS)

The EXP PRO battery line has a built-in BMS that controls balanced charging and discharging of the individual Lithium cells contained within. It also provides protection from:

- Over-Charging.
- Over-Discharging.
- Over-Current.
- Over-Temperature
- Short Circuit

If the BMS has been tripped to protect the lithium cells and has shut down the battery simply plug in the AC charge cord as if charging and the BMS will reset itself and resume normal operation.

13. Airline Travel



EXP48PRO: TSA COMPLIANT

Up to two of the EXP48PRO batteries can be brought with you in your carry-on luggage. While the FAA regulations state the limit is 160 watts, and the EXP48PRO only contains 153.6 watts per battery, ultimately the final decision rests with the TSA officer on whether an item is allowed through the checkpoint.



EXP96PRO: ~~TSA COMPLIANT~~

The EXP96PRO contains 307.2 watts per battery and does not meet FAA regulations for airline travel.

Please check current FAA regulations and the individual airline rules prior to airline travel. Do not put EXP PRO batteries or any other lithium batteries or devices containing lithium batteries in checked baggage of any type. If allowed by FAA regulations and individual airline rules only take in carry-on baggage. Current FAA regulations can be found on their website at www.faa.gov search "Pack Safe

Lithium Batteries”. The major airlines list rules for lithium batteries on their websites.

14. Battery Storage

Your battery is initially packed and shipped at roughly 10-30% charge. It is best practice to fully charge your battery before the first use. For storage greater than 3 months, the general rule is to store at 40-50% of capacity, or having only 2 indicator lights lit. We have provided a “Notes” section for you to keep track of your battery maintenance.

15. Safe Use of Lithium Batteries

- Never expose the battery to liquids, especially saltwater. This can cause internal corrosion and damage to the lithium cells and/or the BMS, causing them to malfunction.
- Although the battery consists of a shock absorbing case, handle with as much care as possible to avoid dropping the battery. This can damage the lithium cells, or more likely the BMS, causing them to malfunction.
- Never operate the battery in direct sunlight. This is hard on the BMS electrical components and the lithium cells. Prolonged use in direct sunlight can damage the battery.

16. FAQs

How long will it take to charge my battery?

EXP48PRO: Approximately 6.5 hours ± @ 2A.

EXP96PRO: Approximately 13.0 Hours ± @ 2A.

Can I use an inverter?

An inverter can be used with EXP PRO Battery Line. Please note that using an inverter will draw additional power from the battery to convert DC to AC power. Visit www.EXPPROPOWER.com for more information.

How many life cycles (discharge and recharge) should I expect from my EXP PRO battery?

Up to 5000.

What are some common devices I can charge with my EXP PRO battery?

Cell Phones, Go Pros, Laptops, Tablets, Bluetooth Speakers, Drones, LED Lights, CPAP machines, BiPAP machines, Cameras, Air Pods and more.

Can I use a different charge cord other than the two supplied with my battery?

Use of a different charge cord may damage the battery and is not recommended. Replacement cords may be available to purchase through your battery retailer, or you can find them on www.EXPPROPOWER.com.

CPAP User Information

17. Powering Your PAP Machine From The DC Output Port (Recommended)

- A. Obtain the DC power cord for your PAP machine. This cord is a 12V cigarette style plug that is meant to power your *specific* PAP machine and is sold separately from this battery.
- B. Using the DC power cord *specific* to the individual PAP machine being powered, plug your device into the DC Output Port on the battery ensuring a secure fit.
- C. The port(s) will automatically turn on and provide power to the connected device.
- D. To turn off the device, simply unplug it from the power port.
- E. To get the most run time from the battery we recommend turning off all auxiliary features such as heated hose and humidifier.

18. PAP Machine DC Power Cords

RM-10

Fits Models: Resmed Airsense 10 CPAP, Airsense Elite CPAP, Airsense 10 AutoSet CPAP, Airstart 10 CPAP, Airstart 10 Auto CPAP, Aircurve 10 S Bilevel, Aircurve 10 Vauto Bilevel.



RM-9

Fits Models: Resmed S9 Escape CPAP with ERP, S9 Elite CPAP with ERP, S9 AutoSet CPAP, S9 VPAP S Bilevel.



DS-12V:

Fits Models: Philips Respironics Dreamstation CPAP, Dreamstation Pro, Dreamstation Auto, Dreamstation BiPAP & Auto.



S1-60:

Fits Models: Philips Respironics Remstar 60 Series, Auto CPAP, Pro CPAP, Plus CPAP/C-Flex, SE CPAP, BiPAP Pro/Bi-Flex, BiPAP Auto/Bi-Flex BiPAP AutoSV Advanced.



19. Powering Your PAP Machine Using An Inverter (not included)

- A. Plug the AC power cord included with the PAP machine into the AC outlet on a pure sine wave inverter.
- B. Plug the inverter into the DC output port found on the battery. The inverter will convert DC power from the battery to AC power required for the factory AC power cord.
- C. Please note that using an inverter will draw more of your battery power than just using a DC power cord.
- D. To ensure the integrity of your PAP machine, please check with your PAP machine manufacturer regarding the type of inverter to use. Most manufacturers recommend a pure sine wave inverter as opposed to a modified sine wave inverter.

20. PAP Machine Runtimes

To get the most run time from the battery we recommend turning off all auxiliary features such as humidifier and heated hose if possible. These features use a large amount of amperage and will draw most of the available power from the battery.

PAP machine nightly run times listed below for the EXP48PRO and EXP96PRO are figured using the average night sleep in the US of 7 hours and with auxiliary features turned off. Power requirements will vary greatly from one PAP machine to the next and with different prescribed pressure settings. We recommend you test your PAP machine with the battery prior to depending on it for emergency or off-grid power use. It is important that your mask fits properly. Air leakage will result in higher power consumption and reduced run times.

EXP48PRO: 2-3 Nights

EXP96PRO: 4-6 Nights

Warranty Information

22. Limited Warranty

EXP PRO warrants to the original consumer purchaser that the EXP PRO product will be free from defects in workmanship and materials under normal consumer use during the applicable warranty period identified in the “Warranty Period” section below, subject to the exclusions set forth below. This warranty statement sets forth EXP PRO’s total and exclusive warranty obligation. We will not assume, nor authorize any person to assume for us, any other liability in connection with the sale of our products.

Warranty Period:

The warranty period is 2 years. In each case, the warranty period is measured starting on the date of purchase by the original consumer purchaser. The sales receipt from the original purchase, or other reasonable documentary proof, is required in order to establish the start date of the warranty period.

Remedy:

EXP PRO will repair or replace (at EXP PRO’s option) any EXP PRO product that fails to operate during the applicable warranty period due to defect in workmanship or materials. If a valid claim is made during the applicable period, EXP PRO, at its options, will either (1) repair the product, or (2) replace the product with a product of equal value. Whether a product is repaired or replaced, it assumes the remaining warranty of the original product or ninety (90) days from the date of repair or replacement, whichever is greater.

Limited to Original Consumer Purchaser:

The warranty on EXP PRO’s product is limited to the original consumer purchaser and not to any subsequent owner.

Exclusions:

EXP PRO's warranty does not apply to (i) any product that is misused, abused, modified, damaged by accident, or used for anything other than normal consumer use as authorized in EXP PRO's current product literature, or (ii) any product purchased through an online auction house. EXP PRO's warranty does not apply unless the battery cell is stored at the proper charge level as laid out in section 14.

How to Receive Service:

To obtain warranty service, contact our customer service team at orders@EXPPROPOWER.com

EXP PRO

Power to Explore

Contact us:

 @exppropower

 @exppropower

 @exppropower

www.EXPPROPOWER.com

