

# QUICK START GUIDE



PooliPrint™ A4

## TABLE OF CONTENTS

In the box	1
My PooliPrinter parts	2
How to use	3
Download the Pooli A4 App or Drivers	4
Connect your mobile device	5
Connect your computer	6
Thermal ribbon replacement	7

## IN THE BOX



PooliPrinter A4



Quick Start Guide



Thermal Ribbon  
(Inside the Printer)

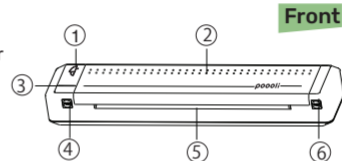


USB Cable

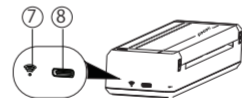
1

## MY POOLIPRINTER PARTS

- 1 Power Button
- 2 Top Cover
- 3 LED Indicator
- 4 Cover Opening Button
- 5 Paper Inlet
- 6 Cover Opening Button
- 7 Bluetooth LED Indicator
- 8 USB-C input



Front



Left

2

## HOW TO USE

### Powering ON/OFF

Hold power button for 3 seconds to turn ON/OFF PooliPrinter XL.

### Light Status

- ◆ **White:** Standby / Charging Completed
- ◆ **Red:** Cover open / Out of Ribbon
- ◆ **Green:** Charging

### Loading Paper

Insert A4 paper sheet in the paper inlet. Printer will feed some of the sheet automatically.

### Recharging

Fully recharge your device before the first time use. It can be recharged from a USB charger. It takes about 180 minutes to fully recharge.

3

## DOWNLOAD THE POOLI A4 APP & OR DRIVERS

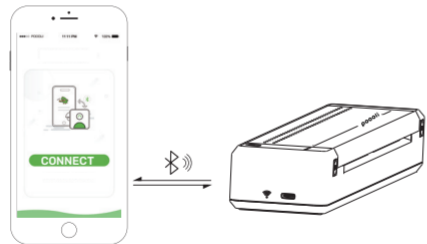


SCAN ME

4

## CONNECT YOUR MOBILE DEVICE

- ◆ Open the App and click "CONNECT"
- ◆ Connect to the device by searching for Bluetooth devices and select "Pooli A4-XXXX"

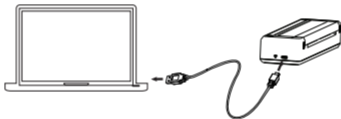


5

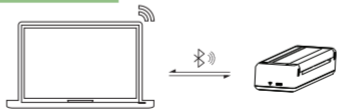
## CONNECT YOUR COMPUTER

- ◆ Download the drivers for Windows or Mac
- ◆ Connect your A4 printer with Bluetooth or USB-C

### USB Connection



### Bluetooth Connection



6

## THERMAL RIBBON REPLACEMENT

- 1 Press the cover opening buttons on both sides
- 2 Lift the printer cover upward
- 3 Align right and left wings of ribbon
- 4 Rotate ribbon rewind wheels to make ribbon smooth

1



2



3



4



7

# PooliPrint™

YOUR DAILY LIFE

ENJOY 15% OFF YOUR ORDERS  
LIFETIME WITH CODE LIFEIS

PLEASE TAG US ON SOCIAL MEDIA  
FOR YOUR CHANCE TO BE FEATURED!



www.pooliprint.com