

rapidline
FURNITURE FOR TODAY

BOOST+



Height Adjustable Workstation Range

CONTENTS

3	Features
4-5	Single Sided Workstations
6-7	Back to Back Workstations
8-9	Corner Workstations
10-13	Add Ons
14-17	Component Breakdown

ABOUT US

Rapidline is a premium, commercial furniture range that has been designed and developed in Australia by the team at Furnx. We offer a complete range of quality height adjustable products with superior features and various sizes to suit your requirements.

With warehouses in Brisbane, Sydney, Melbourne, Adelaide and Perth we are able to get our range to you faster.



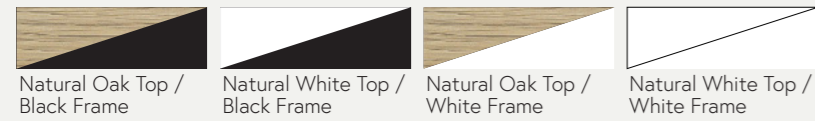
Boost+ Workstation Range

The BOOST+ is a new and improved range which now comes with the below features:

- Dual motor with 3 stage motorised legs
- 120kg weight lifting capacity on the Workstations and 140kg capacity on the Corner Desks
- Smooth & quiet adjustment at 38mm per second
- LED digital controller with 3 pre-set programmable heights and easy to use up & down arrows
- Anti-collision and anti-tilt safety features
- Optional Portable Battery Packs allows desk mobility free from GPOs
- Height range of 620mm - 1270mm H to meet the new Australian Standard
- 750mm depth top with scalloped cable access
- Adjustable levelling feet
- Keypad safety lock and reminder alarm setting
- Low noise emissions
- Easy assembly
- A range of sizes and colours to suit your needs
- Optional Bluetooth control to work with your smart mobile devices
- A selection of cable tidying options

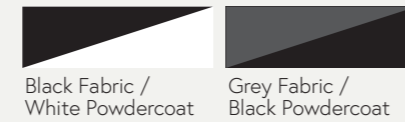
Boost+ Workstation

- Dual motor - 3 stage motorised legs
- 120kg weight lifting capacity
- Smooth & quiet adjustment at 38mm per second
- Digital controller with 3 programmable heights
- Anti-collision and anti-tilt safety features
- Optional Portable Battery Packs allows desk mobility free from GPOs
- Height range of 620mm - 1270mm H
- 750mm depth top with scalloped cable access
- Available in 1200mm, 1500mm or 1800mm wide
- Available colours -



Boost+ Workstation with Screen

- All of the features of the Boost+ Workstation
- 900mm H x 30mm T pinnable privacy screen
- Screens in Black Fabric with White powdercoat extrusion or Grey Fabric with Black extrusion
- Available in 1200mm, 1500mm or 1800mm wide to suit Boost+ Workstations
- Available in other screen heights. Ask us today.



Boost+ Workstation with Cable Tray

- All of the features of the Boost+ Workstation
- Fully ducted cable tray with punchout for power & data to be fitted to either external or internal of frame
- Optional cable snake and bridge upgrades available to manage power and data cords to keep your workspace safe and tidy.
- Available in Black or White to match the workstation frame
- Available in 1200mm, 1500mm or 1800mm wide to suit Boost+ Workstations



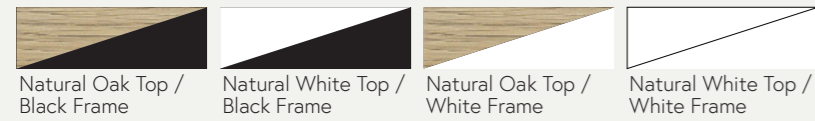
Boost+ Workstation with Screen & Cable Tray

- All of the features of the Boost+ Workstation
- Including pinnable privacy screen
- Clearance from Floor to bottom of screen: 425mm
- Including cable tray
- Internal Segregation For Power & Data



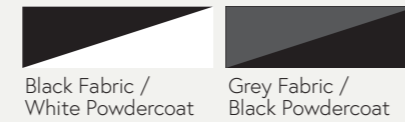
Boost+ Back to Back

- Suits 2 users with independent height adjustment
- Dual motor - 3 stage motorised legs
- 120kg weight lifting capacity per desk
- Smooth & quiet adjustment at 38mm per second
- Digital controller with 3 programmable heights
- Anti-collision and anti-tilt safety features
- Height range of 620mm - 1270mm H
- Overall depth of 1500mm
- Available in 1200mm, 1500mm or 1800mm wide
- Available colours -



Boost+ Back to Back with Screen

- All of the features of the Boost+ Back to Back
- 900mm H x 30mm T pinnable privacy screen
- Screens in Black Fabric with White powdercoat extrusion or Grey Fabric with Black extrusion
- Available in 1200mm, 1500mm or 1800mm wide to suit Boost+ Workstations
- Available in other screen heights. Ask us today.



Boost+ Back to Back with Cable Tray

- All of the features of the Boost+ Back to Back
- Fully ducted cable tray with punchout for power & data to be fitted to either external or internal of frame
- Optional cable snake and bridge upgrades available to manage power and data cords to keep your workspace safe and tidy.
- Cable trays available in Black or White to match the workstation frame
- Available in 1200mm, 1500mm or 1800mm wide to suit Boost+ Workstations



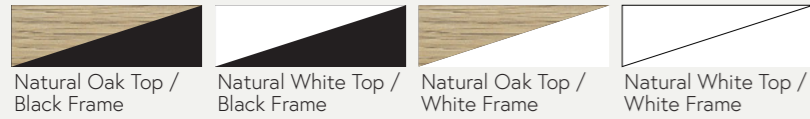
Boost+ Back to Back with Screen & Cable Tray

- All of the features of the Boost+ Back to Back
- Including pinnable privacy screen
- Clearance from Floor to bottom of screen: 425mm
- Including cable tray
- Internal Segregation For Power & Data



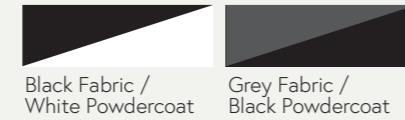
Boost+ Corner

- Corner Workstation for more desk space
- Triple motor - 3 stage motorised legs
- 140kg weight lifting capacity per desk
- Smooth & quiet adjustment at 38mm per second
- Digital controller with 3 programmable heights
- Anti-collision and anti-tilt safety features
- Height range of 620mm - 1270mm H
- Available in 1500x1500mm, 1800x1800mm & 1800x1500mm top sizes
- Available colours -



Boost+ Corner with Screen

- All of the features of the Boost+ Corner
- 900mm H x 30mm T pinnable privacy screen
- Screens in Black Fabric with White powdercoat extrusion or Grey Fabric with Black extrusion
- Available in other screen heights. Ask us today.



Boost+ Corner with Cable Tray

- All of the features of the Boost+ Corner
- Fully ducted cable tray with punchout for power & data to be fitted to either external or internal of frame
- Optional cable snake and bridge upgrades available to manage power and data cords to keep your workspace safe and tidy.
- Cable trays available in Black or White to match the workstation frame



Boost+ Corner with Screen & Cable Tray

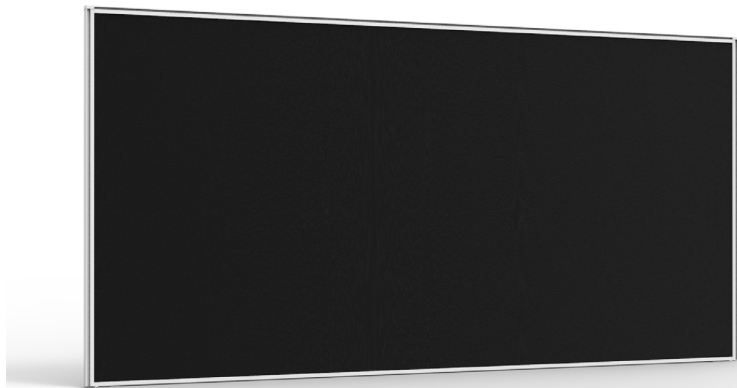
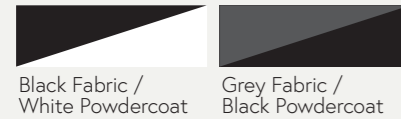
- All of the features of the Boost+ Corner
- Including pinnable privacy screen
- Clearance from Floor to bottom of screen: 425mm
- Including cable tray
- Internal Segregation For Power & Data



SHUSH30+ 900mm Height Screens

- 900mm Height screens used for all BOOST+ configurations
- Comes in 1200mm, 1500mm and 1800mm widths for each corresponding BOOST+ desk
- Also available in a 750mm Return width
- Top rail can be used for hanging accessories
- *Clamps and brackets sold seperately*

Variations :



SHUSH30+ Joining Poles

- Shush30+ 360 Degree screen joining poles
- Includes all hooks & cover plates
- Adjustable levelling foot included
- Available in Black or White Powdercoat

Variations :

- SHSJP900 - 900mm H x 30mm W x 30mm D
- SHSJP1330 - 1330mm H x 30mm W x 30mm D



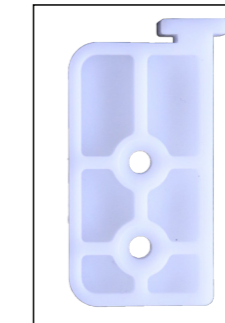
Boost+ with centre dividing screen and return screen

- SHSJP900 used to join return screen to centre screen
- SHSJP1330 used as stabilising pole on end
- Can be used with both Single and Back to Back Workstations
- Add return screen to one or both ends of desk
- Also works with BOOST+ with cable trays
- Desk height can be adjusted without affecting other users or dividing screens
- Can be used between 2 BOOST+ desks



Boost+ with full height SHUSH30+ screen

- The BOOST+ can be used with a full height 1200mm or 1500mm H Shush30+ screen by attaching a nylon glide bracket.
- Works with BOOST+ single sided without screens
- The BR-SLIBR Nylon glide brackets are screwed into workstation tops and fitted to the screen extrusions, this allows smooth adjustment of the workstation while holding the screen steadily in place
- Comes as a set of 2; 1 x Right, 1 x Left



Nylon glide bracket



ADD ON - Cable Snake

- Boost+ Flexi Cable Snake
- 1200mm L x 45mm W x 30mm D
- 4 x Segregation Channels Per Snake
- Available colours -



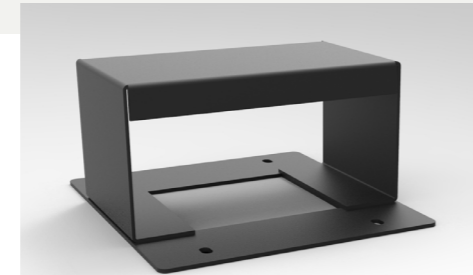
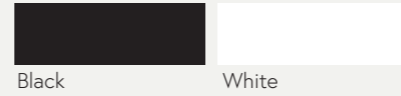
B2-CBSNAKE



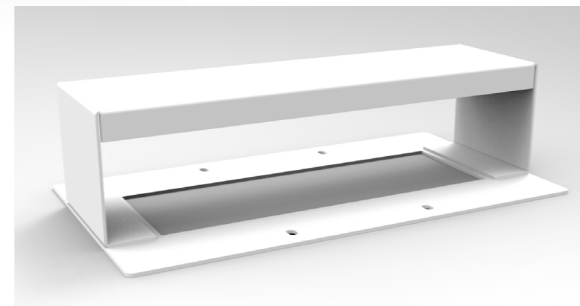
ADD ON - Cable Tray Bridge

- Boost+ Single Sided Workstation Cable Tray Bridge - 100mm W x 175mm D x 94mm H
- Cable Tray Cover to go between two single sided workstation frames
- Allows 30mm gap between users
- Boost+ Back To Back Workstation Cable Tray Bridge - 100mm W x 350mm D x 94mm H
- Cable Tray Cover to go between two back to back workstation frames
- Allows 30mm gap between users

- Available colours -



B2-SSBR



B2-B2BBR

ADD ON - Battery Pack

- Boost+ Battery Pack
- For use on all Boost+ Height Adjustable Workstations that don't have power access
- Includes control box & power charging adapter
- Battery life up to approx. 30 up down cycles before needing to be recharged
- Ideal for education & training room applications



B2-BATT

ADD ON - Bluetooth Control Box

- Boost+ Bluetooth Control Box
- Allows for height adjustment control with smart phone VIA application - only suitable for IOS devices with access to the App Store
- Up/Down Control
- Minimum/Maximum Height Settings



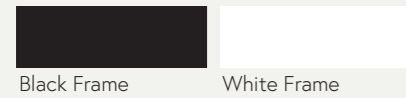
B2-BTCB



Boost+ Single Sided Frame

- Height adjustable frame only
- Telescopic Frame 1100mm W - 1800mm W
- Column Size: 90mm x 60mm
- Foot size of 700mm
- Requires additional arms for cable tray and dividing screen add ons
- Comes with Digital control panel

- Available colours -



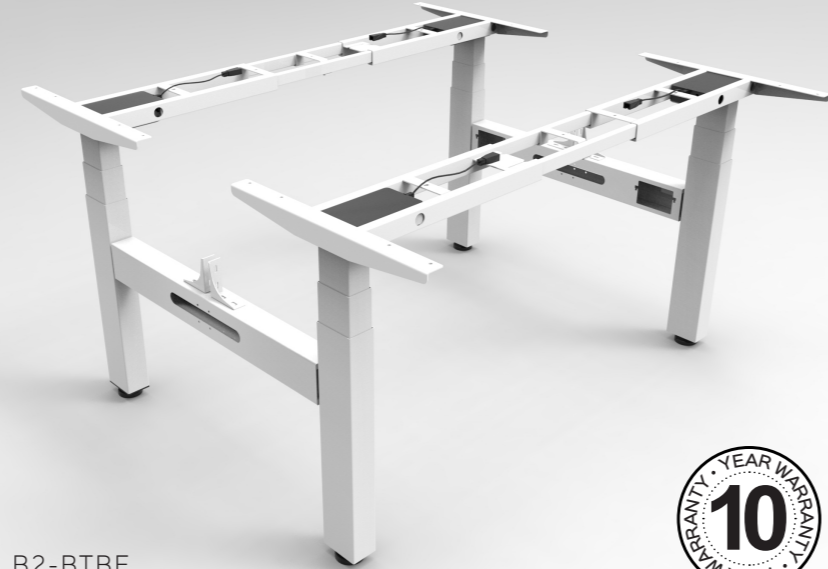
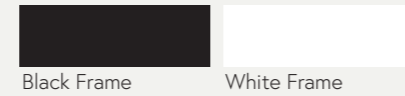
B2-SSF



Boost+ Back to Back Frame

- Height adjustable frame only
- Telescopic Frame 1100mm W - 1800mm W
- Column Size: 90mm x 60mm
- Comes with mounting provisions for screens and cable trays
- Comes with Digital control panel

- Available colours -



B2-BTBF



Boost+ Return Frame

- Height Adjustable return workstation frame
- Telescopic frame 735mm W - 1845mm W
- Suits rectangular return table tops & radial 1 piece corner workstation tops
- With overall return edge size of 1450mm - 2150mm
- Foot size of 500mm

- Available colours -



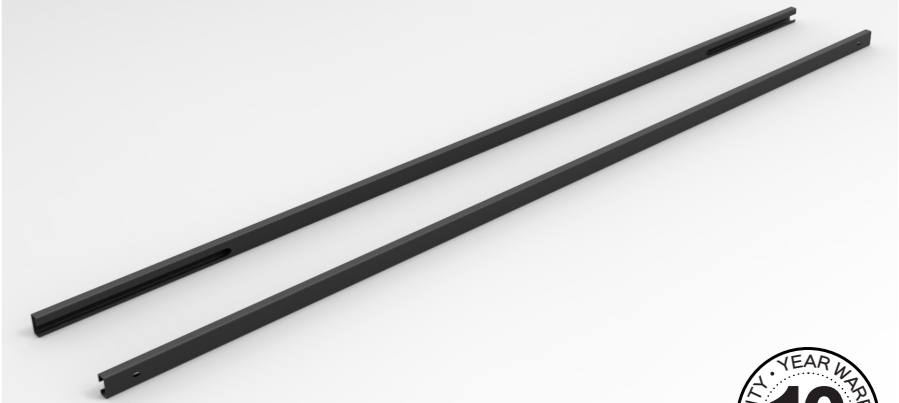
B2-RF



Boost+ Rail Extension

- Boost Plus Rail Extension Beams
- 1600mm W x 30mm H x 15mm D
- 2 Pieces Per Carton
- Suits 2100mm – 2400mm W Workstations

- Available colours -


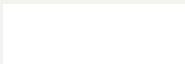


B2-REX

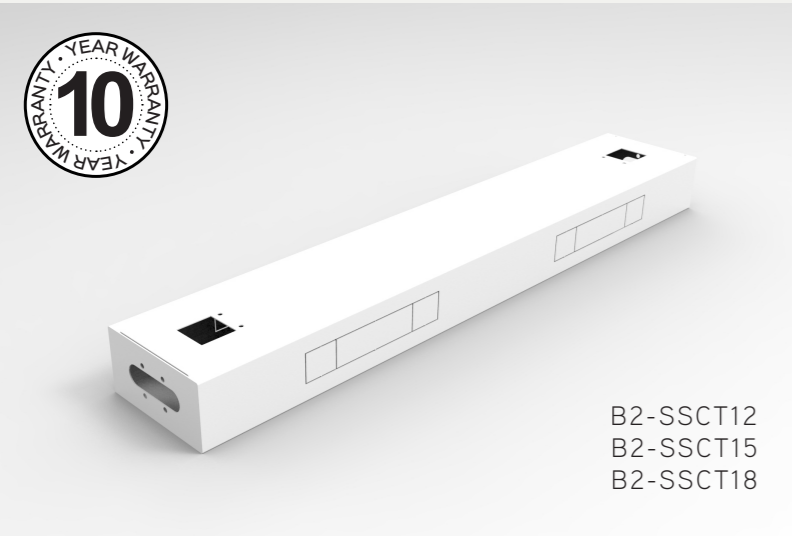


Boost+ Single Sided Cable Tray

- Boost+ Single Sided Workstation Cable Tray
- Internal Segregation For Power & Data
- External & Internal Power & Data Punch Out Provisions
- 4 x External Punchouts at 230mm x 42mm
- 2 x Internal Punchouts at 230mm x 42mm
- Solid Steel Cable Tray Lid With 2 x Access Hole For Boost Plus Cable Snakes
- 175mm D x 90mm H
- 1010mm, 1310mm & 1610mm Widths available

- Available colours -  



Black Frame White Frame



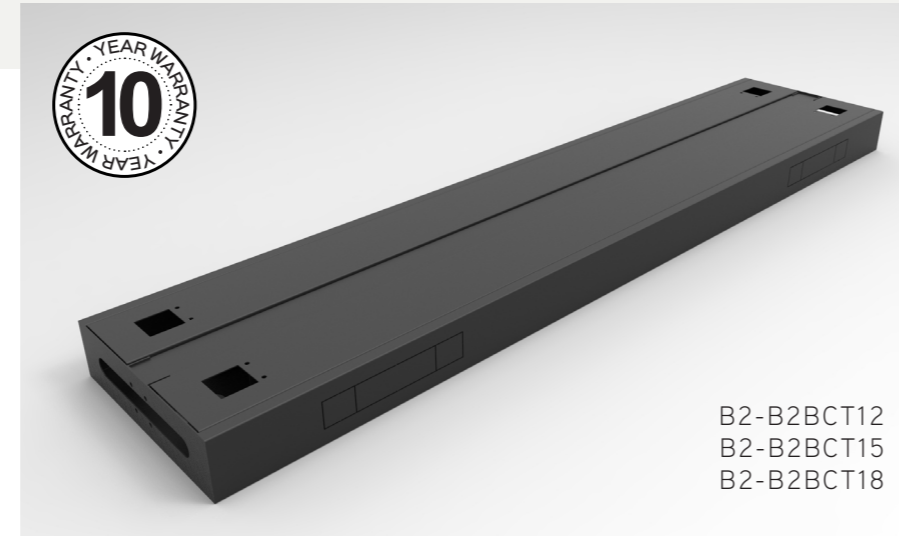
B2-SSCT12
B2-SSCT15
B2-SSCT18

Boost+ Back to Back Cable Tray

- Boost+ Back to Back Workstation Cable Tray
- Internal Segregation For Power & Data
- External & Internal Power & Data Punch Out Provisions
- 4 x External Punchouts at 230mm x 42mm
- 4 x Internal Punchouts at 230mm x 42mm
- Solid Steel Cable Tray Lid With 2 x Access Hole For Boost Plus Cable Snakes
- 350mm D x 90mm H
- 1010mm, 1310mm & 1610mm Widths available

- Available colours -  

Black Frame White Frame

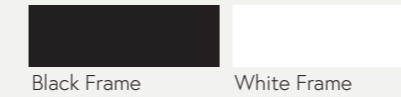


B2-B2BCT12
B2-B2BCT15
B2-B2BCT18

Boost+ Single Sided Arm

- Boost+ single sided workstation cable tray & screen mounting arm
- Comes as a set of 2
- 315mm W x 60mm D x 90mm H

- Available colours -



Black Frame White Frame



B2-SSARM

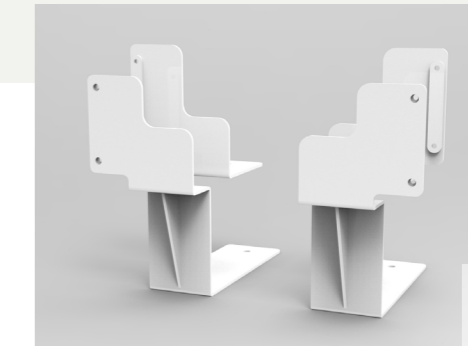
Boost+ Screen Bracket

- B2-SBRAC : Boost+ single sided workstation screen bracket set
- Set of 2 per carton
- B2-BBRAC : Boost+ back to back workstation screen bracket set
- Set of 4 per carton

- Available colours -



Black Frame White Frame



B2-SBRAC



B2-BBRAC





rapidline
FURNITURE FOR TODAY

WORKSTATIONS - FURNITURE - SEATING - STORAGE - ACCESSORIES