

Hemp Worldwide

Sample Devil's Drip

Strain

| | | |
|-----------------------|-----------------|----------------------------------|
| <LOQ | 0.87% | 14.79% |
| $\Delta 9$ THC | Total CBD | Total Cannabinoids |
| Not tested | Pass | 147.9 |
| Water Activity | 10.14 | mg / g Total Cannabinoids |
| | Moisture | |



Sample ID **23122211071**

Matrix **Biomass**

Harvest/Prod Date

Report Created **12/20/2023**

Results Valid Until

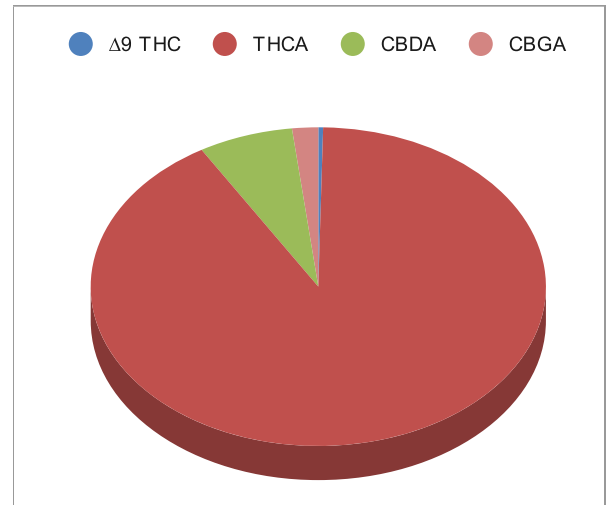
12/20/2024

Sample Extracted
12/20/2023 6:17:00

Sample Analyzed
12/20/2023 9:34

Method SOP LO001-R11


| Cannabinoids | %Weight | mg/ gram | LOQ(% /w) |
|-----------------------------|---------|----------|-----------|
| $\Delta 9$ THC | <LOQ | <LOQ) | 0.06 |
| THCA | 13.47 | 134.7 | 0.06 |
| Total THC (THCA*0.877)+9THC | 11.86 | 118.6 | 0.06 |
| CBDA | 0.99 | 9.9 | 0.06 |
| CBD | <LOQ | <LOQ) | 0.06 |
| CBN | <LOQ | <LOQ) | 0.06 |
| $\Delta 8$ THC | <LOQ | <LOQ) | 0.06 |
| CBC | <LOQ | <LOQ) | 0.06 |
| CBGA | 0.27 | 2.7 | 0.06 |
| CBG | <LOQ | <LOQ) | 0.06 |
| CBDV | <LOQ | <LOQ) | 0.06 |
| CBDVA | <LOQ | <LOQ) | 0.06 |
| THCVA | <LOQ | <LOQ) | 0.06 |
| CBDQ | <LOQ | <LOQ) | 0.06 |
| HHC | <LOQ | <LOQ) | 0.09 |



Total THC and Total CBD are calculated values per OAR 333-064-0100. Cannabinoid values for plant matter samples are reported on a dry weight basis. Water activity action level is 0.65Aw. LOQ= Limit of Quantitation. NR=Not Reported.

Rogue Research Lab LLC
Rogue River, OR 97537 Tel. 541-582-1962

rogueresearchlab.com


Craig Berry - Lab Director
12/20/23

Results pertain to submitted samples only. Rogue Research Lab LLC makes no claims as to the consumer safety or other risks associated with any detected or non-detected amounts of any pesticides, solvents or other adulterants. This report shall not be reproduced, unless in its entirety, without written approval from Rogue Research Lab LLC. Samples were received in good condition and all QC samples met acceptance criteria of the method; data available upon request. For informational purposes only.