

Sample Kush Mint Gelato  
Strain

<b>0.07%</b>	<b>0.10%</b>	<b>23.90%</b>
$\Delta 9$ THC	Total CBD	Total Cannabinoids
<b>Not tested</b>	<b>Pass</b>	<b>239.0</b>
Water Activity	Moisture	mg / g Total Cannabinoids
	<b>10.49</b>	

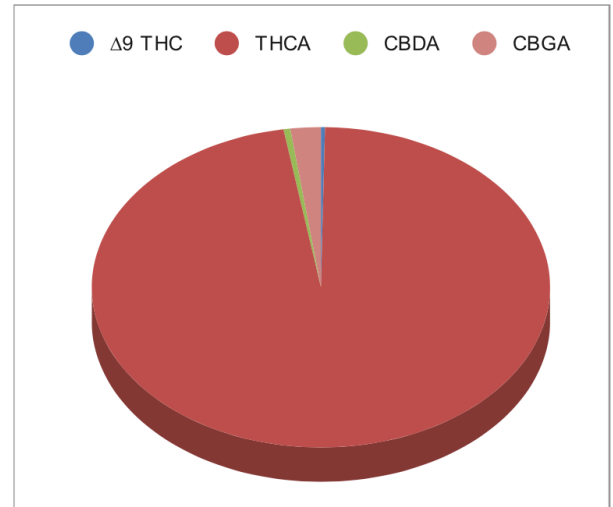


Sample ID **24010070024**  
Matrix Flower

Harvest/Prod Date  
Report Created **1/5/2024** Results Valid Until **1/5/2025**

Sample Extracted 1/4/2024 9:48:00 Sample Analyzed 1/4/2024 11:21 Method SOP LO001-R11


Cannabinoids	%Weight	mg/ gram	LOQ(% /w)
$\Delta 9$ THC	0.07	0.7	0.06
THCA	23.20	232.0	0.06
Total THC (THCA*0.877)+9THC	20.42	204.2	0.06
CBDA	0.11	1.1	0.06
CBD	<LOQ	<LOQ)	0.06
CBN	<LOQ	<LOQ)	0.06
$\Delta 8$ THC	<LOQ	<LOQ)	0.06
CBC	<LOQ	<LOQ)	0.06
CBGA	0.51	5.1	0.06
CBG	<LOQ	<LOQ)	0.06
CBDV	<LOQ	<LOQ)	0.06
CBDVA	<LOQ	<LOQ)	0.06
THCVA	<LOQ	<LOQ)	0.06
CBDQ	<LOQ	<LOQ)	0.06
HHC	<LOQ	<LOQ)	0.09



Total THC and Total CBD are calculated values per OAR 333-064-0100. Cannabinoid values for plant matter samples are reported on a dry weight basis. Water activity action level is 0.65Aw. LOQ= Limit of Quantitation. NR=Not Reported.

[Rogue Research Lab LLC](http://Rogue Research Lab LLC)  
[Rogue River, OR 97537](http://Rogue River, OR 97537) Tel. 541-582-1962

[rogueresearchlab.com](http://rogueresearchlab.com)

  
Craig Berry - Lab Director  
1/5/24