

Finfort Auto-Deadbolt Nightlatch Fitting Instructions

EN 12209:2016					
2	M	4	0	0	F 2 7
Conforms to BS 8621 2017					

The gap between the lock and the strike plate should not exceed 5mm.

- This lock is approved for use on inward-opening, wooden doors 44mm to 60mm thick with a 3-star rated thumb turn cylinder, the length of which will vary depending on the door thickness.
- For doors thicker than 50mm, we recommend using an offset cylinder. This will require the lock case position to be offset from the centre of the door accordingly.
- This lock is not approved for use on fire doors.
- The lock should be fitted in an upright position only.
- The lock case should only be fitted with a thumb turn cylinder to allow for continual egress.
- When fitted, the thumb turn cylinder should be loose in turning to allow the unlocking sequence to operate fully.
- The gap between the lock and the strike plate should not exceed 5mm.

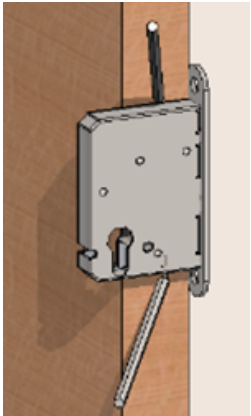


Fig 1
When fitting, take care to avoid door joints.

Hold the lock against the side of the door and mark the top and bottom of the lock case on the door edge.



Fig 2
Mark a centre line* between the marked lock case lines. Drill a series of 19mm diameter holes a little deeper than the lock depth. **Do not drill above or below lock case lines.**

*For doors more than 50mm thick, mark an offset line

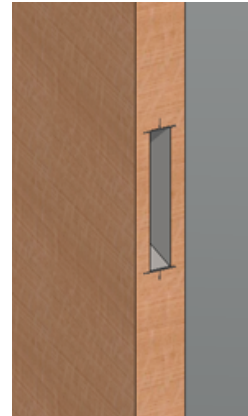


Fig 3
Take care to keep the mortise height to a minimum so there is sufficient wood to fit the lock case fixing screws.

Chisel out the remaining wood to make a mortise. Clean the mortise to avoid debris entering the lock case.



Fig 4
Insert the lock case and mark the cover plate outline.

Chisel out a 4mm recess so the cover plate is flush with the door edge.

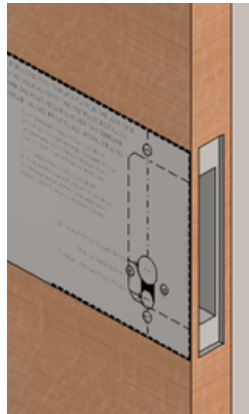


Fig 5
Remove the lock case. Using the paper template provided, mark the relevant holes on the door and drill as directed. **Take care that all debris is removed from the mortise to avoid debris entering the lock case.**



Fig 6
Fit the lock in the mortise. **Do not use a hammer to force the case.** Fit the lockguards, and internal pull if using, on either side of the door with the bolts provided. Next, fit the thumb turn cylinder in the lock case. Fit the cylinder screw through the lock case to fasten the cylinder.



Fig 6.1
The thumb turn should not be used as a means to pull open the door.

We recommend you fit a Finfort door pull as shown here.

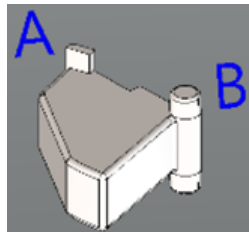


Fig 7
The trigger must be fitted with its front flat face towards the door frame. The trigger rotates into the lock case when the door closes.

Insert projection A through the central slot of the aperture in the lock case. Slide projection A (left or right depending on door handing) to the side of the aperture until cylindrical column B can be rotated into the opposite slot in the aperture.

Fig 7.1 Left handed door

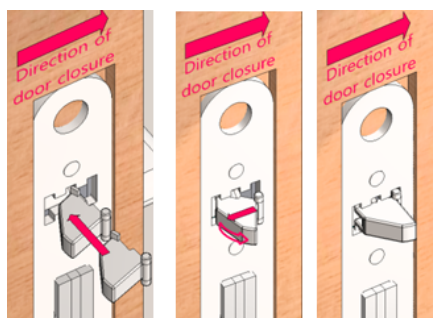


Fig 7.2 Right handed door

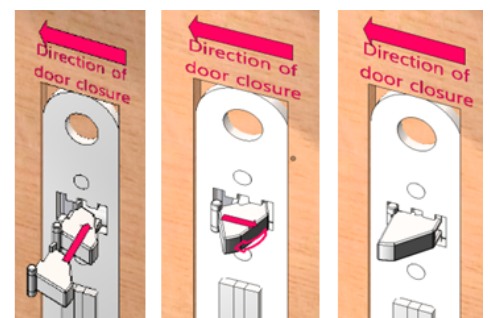




Fig 8

Fit the cover plate over the lock. Drill holes for the fixing screws and fit them.

Rotate the trigger so that the bolt projects in and out freely.

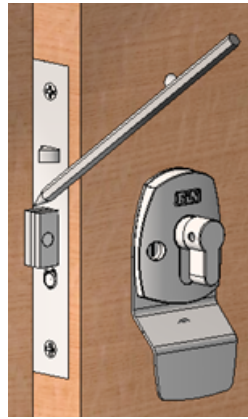


Fig 9

Rotate the trigger to project the bolt. Use the fitting template to determine where to fit the strike plate on the door frame.

If fitting a draft seal, adjust the position of the strike plate so the lock can always be opened easily.

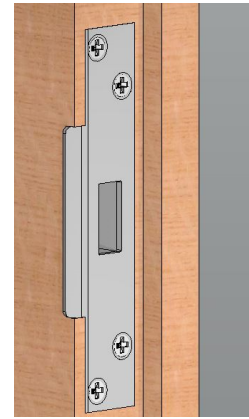


Fig 10

Using the fitting template provided, mark the strike plate position on the door frame and chisel out accordingly. Fix the strike plate using the screws supplied.

The gap between the lock and the strike plate should not exceed 5mm.

The gap between the lock and the strike plate should not exceed 5mm.

If fitting a draft seal, adjust the position of the strike plate so the lock can always be opened easily.

Do not open the lock case as this will void the guarantee.

Useful Features of the Auto-Deadbolt Nightlatch

- A snib button is located immediately below the deadbolt. To temporarily disable the deadbolt, slide the snib button up. To release the snib, slide the snib button down.
- The relocking feature: If the auto-deadbolt nightlatch has been unlocked but the door has not been opened, a rotation of the key in the opposite direction will relock the deadbolt.
- The auto-deadbolt nightlatch can be unlocked with a rotation of 90-130 degrees. This is significantly less than the rotation required for manual deadbolts.

Trouble Shooting

- **Trigger is scratching heavily on the strike plate:** the gap between the lock and strike is too wide, reduce gap to 5mm or less.
- **Lock is stiff during unlocking:** the strike plate may need to be moved to give the deadbolt more unlocking tolerance.
- **The key does not go in smoothly:** add graphite powder or cylinder lubricant to the keyway.
- **The bolt or trigger action are not working smoothly:** remove the front plate and trigger and project a suitable lubricant into the lock case. Make sure the surfaces of the deadbolt are free of grease or dirt.
- **Key rotation to unlock is greater than 130 degrees:** when unlocking with the thumb turn, always turn and release the thumb turn, ensuring the thumb turn does not rotate beyond its 6 o'clock position.

Care & Maintenance

- Lubricate the cylinders annually or as required. For ABS Avocet cylinders, use ABS Cylinder Graphite Powder or ABS Maintenance Spray.
- To clean the lock cover plate and lockguards, wipe with a soft damp cloth and a mild detergent. Do not use abrasives on the surfaces. Do not paint or varnish. In coastal areas, we advise more regular cleaning of exposed surfaces.
- Periodically, ensure that the operation of the lock and all its fixings are secure and adjust if required. Ensure that the strike plate is in line with the bolt closure and that the bolt is clear to enter the strike without interference.

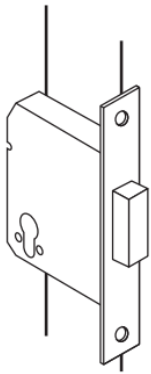
Guarantee

- The guarantee is applicable to installations in residential properties in the UK only and is non-transferable. The guarantee covers defective materials or design should the lock become inoperable within 10 years and if the finish on the lockguards and pull becomes defective within 2 years. Exposed coastal locations (e.g. 1 mile of the coast) are restricted to polished chrome finish only.
- Finfort Ltd will not be liable for any other losses incurred arising from product failure whether such losses are direct, indirect or consequential.
- Proof of purchase (receipt) must be produced.
- The guarantee does not cover misuse, non-authorized repairs, incorrect fitting or maintenance or scratching to finishes.
- Do not open the lock case as this will void the guarantee.

Finfort Manual Deadbolt Fitting Instructions

- This lock is kitemarked BS3621 certified for use on inward-opening, wooden doors of 44mm to 60mm thickness when fitted with large Finfort lockguards and a 3-star rated key/key cylinder, the length of which will vary depending on the door thickness.
- For doors thicker than 50mm, we recommend using an offset cylinder. This will require the lock case position to be adjusted from the centre of the door accordingly.
- The lock should be fitted in an upright position only.

Fig 1



Position the lock as near mid-height of the door as possible.

Hold the lock across the door edge and mark the top and bottom of the lock case.

Fig 2

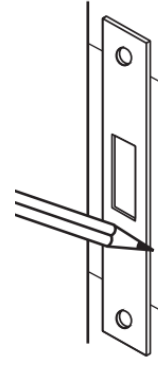


Mark a centre line* between the marked lock case lines. Drill a series of 18mm diameter holes a little deeper than the lock depth. Do not drill above or below lock case lines.

Chisel out remaining wood to make a mortise, squaring up top & bottom edges.

*For doors more than 50mm thick, mark an offset line

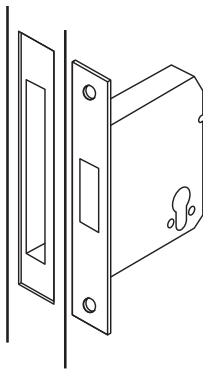
Fig 3



Insert the lock body into the mortise and mark around the forend on the door edge.

Chisel a recess to accommodate the depth of the lock forend and cover plate.

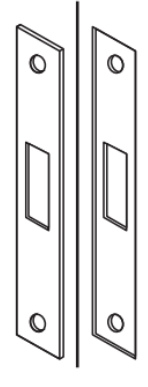
Fig 4



Holding the lock against the face of the door, ensuring the faceplate is flush with the door edge and in line with the forend recess, mark the position of the cylinder profile.

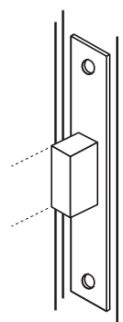
Drill and cut both sides of the door for the cylinder and fixing holes for lockguard. Fit lock loosely into door making sure that the cylinder passes freely into the lock.

Fig 5



With the cover plate in position, secure the lock into the door through the cover plate with the screws provided and fit the cylinder. Test to ensure lock operates correctly.

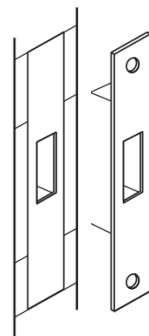
Fig 6



With the door open and the deadbolt in the locked position, close the door gently against the frame.

Mark the positions of the top and bottom of the deadbolt on the frame.

Fig 7



Mark the position of the box striker centrally on the door frame allowing equal clearance above and below the upper and lower marks.

Cut out the frame to receive the striker. Fit striker checking lock functions correctly prior to fixing with screws provided.

Fig 8



When lock case and cylinder are fitted, lockguards can be attached by passing screws through inner lockguard, door, lock case and screw in rear of external lockguard and turned until tight. Screw may require cutting to length dependent on door thickness.

Care & Maintenance

- Lubricate the cylinders annually or as required. For ABS Avocet cylinders, use ABS Cylinder Graphite Powder or ABS Maintenance Spray.
- To clean the lock cover plate and lockguards, wipe with a soft damp cloth and a mild detergent. Do not use abrasives on the surfaces. Do not paint or varnish. In coastal areas, we advise more regular cleaning of exposed surfaces.
- Periodically, ensure that the operation of the lock and all its fixings are secure and adjust if required.
- Ensure that the strike plate is in line with the bolt closure and that the bolt is clear to enter the strike without interference.

Guarantee

- The guarantee is applicable to installations in residential properties in the UK only and is non-transferable. The guarantee covers defective materials or design should the lock become inoperable within 10 years and if the finish on the lockguards and pull becomes defective within 2 years. Exposed coastal locations (e.g. 1 mile of the coast) are restricted to polished chrome finish only.
- Finfort Ltd will not be liable for any other losses incurred arising from product failure whether such losses are direct, indirect or consequential.
- Proof of purchase (receipt) must be produced.
- The guarantee does not cover misuse, non-authorized repairs, incorrect fitting or maintenance or scratching to finishes.
- Do not open the lock case as this will void the guarantee.