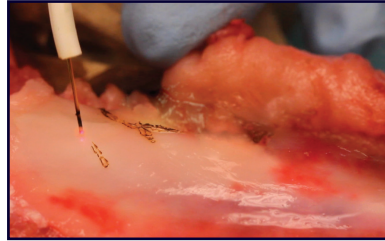


! **PRACTICE WITH LASER**
on a piece of raw red meat,
hotdog, or a tomato



Always test fire the laser outside the mouth before using it on a patient. The doctor or hygienist, the patient, and any staff members present in the operatory should be wearing the appropriate safety eyewear whenever the laser is being operated. Strict adherence to protocols for safe laser use is essential.



DENTAL HYGIENE LASER



PROTECT YOUR INVESTMENT

Your Hygea dental hygiene laser is covered by a 2 year limited warranty against potential damages and defective materials.

Register online at www.caogroup.com

Thank you for purchasing your Hygea dental hygiene laser. If you have any questions regarding the setup and use of the Hygea laser, please contact your local sales representative or call CAO Group.



4628 West Skyhawk Drive
West Jordan, UT 84084
www.caogroup.com

Call us toll free at 1-877-877-9778 in the U.S.

Please read the Hygea Operator's Manual completely before unpacking, setting up, or operating the laser. This Quick Start Guide is meant to be used as a reference once you have read the Operator's Manual.

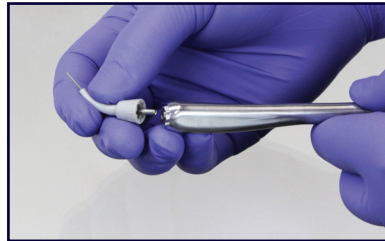
1 PLUG IN POWER CORD



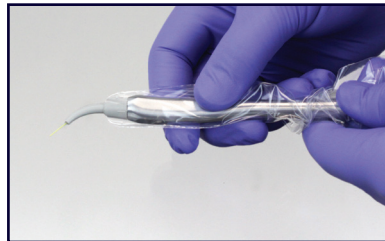
2 PRESS ON FOOT PEDAL
to confirm battery is installed by making sure there is a blinking green light.



3 ATTACH STERILIZED TIP
by inserting the tip's metal connector into the handpiece



4 SLIDE BARRIER SLEEVE
over the handpiece assembly

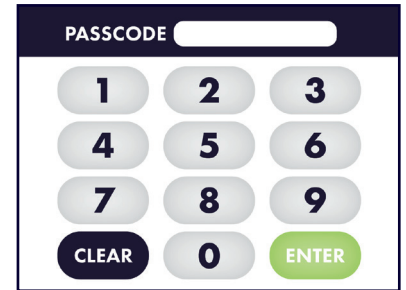


5 SWITCH POWER ON
with the unit in the cradle by using the main power switch on the side of the device

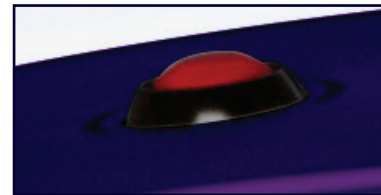


6 PRESS ENTER TO LOGIN
from the home screen and type in your digital passcode using the numerical buttons

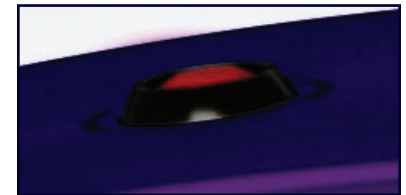
(1234 is set as default)



7 ENSURE LASER STOP
switch is enabled and ready for firing



OUT: Laser Stop is enabled



IN: Laser Stop is disabled

8 ACTIVATE LASER
by pressing the ready key then using the foot pedal

