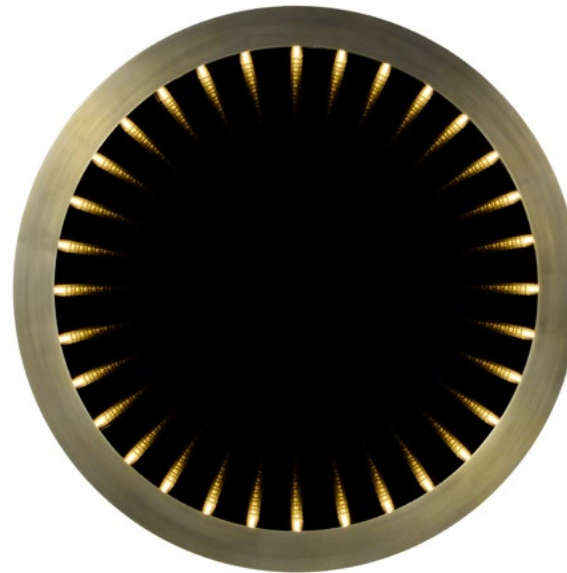


HOME ACCESSORIES / CLASSIC COLLECTION / MIRRORS

## INCEPTION

Inspired by infinity mirrors from the 1970s, the Inception lights up to reveal a seemingly endless line of reflections, appearing smaller and smaller as they fade into the distance. When it's turned off, it becomes an elegant everyday mirror, framed in thick Flat Brass. Once turned on, it's as if a portal has been opened, leading you into another dimension. LED antique bulbs are placed behind the frame for a lighting effect that's soft and mellow. Handcrafted with the finest detail, the Inception mirror is a spectacular showcase of artistry and drama.



**BULB TYPE :**

EU, AU, ASIA: ST26 E14 1W / LED

US: S11 E12 1W / LED

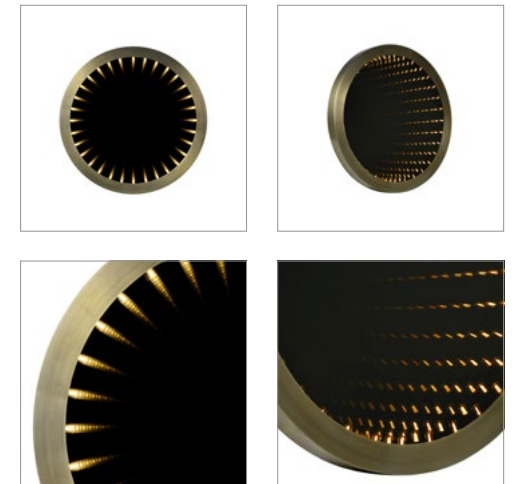
LED Colour: Warm White

**AVAILABLE IN :**

FINISHES : Flat Brass

**Special Note: This light fixture is not dimmable.**

Also available in diameter 100cm, 70cm Mirror - See over for more details of the full collection.



**DIMENSIONS :**

ROUND	Weight: 67 Kg
Dia: 51.2" / 130 cm	Max watt.: 32W
W: 4.3" / 11 cm	No. of Bulbs: 32

**PRODUCT SHOWN IN :**

Dia. 130cm - Flat Brass

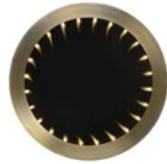
*Check for release certification in specific regions.*

> APPENDIX SPARE PARTS

HOME ACCESSORIES / CLASSIC COLLECTIONS / MIRRORS / INCEPTION  
FULL COLLECTION



**Inception Round  
Large 130cm**  
Dia: 51.2" / 130 cm  
W: 4.3" / 11 cm  
Weight: 67 kg  
Max watt.: 32W  
No. of Bulbs: 32  
Not Dimmable



**Inception Round  
Medium Mirror 100cm**  
Dia: 39.3" / 100 cm  
W: 4.3" / 11 cm  
Weight: 52.5 kg  
Max watt.: 24W  
No. of Bulbs: 24  
Not Dimmable



**Inception Round  
Small Mirror 70cm**  
Dia: 27.5" / 70 cm  
W: 4.3" / 11 cm  
Weight: 25.5 kg  
Max watt.: 16W  
No. of Bulbs: 16  
Not Dimmable



**Inception Tall Mirror**  
L: 53.9" / 137 cm  
W: 4.3" / 11 cm  
H: 94.5" / 240 cm  
Weight: 280 kg  
Max watt.: 58 / 29 W  
No. of Bulbs: 58  
Not Dimmable



**Inception Sconce**  
L: 10.6" / 27 cm  
W: 5.5" / 14 cm  
H: 39.4" / 100 cm  
Weight: 30 kg  
Max watt.: 107 / 175 W  
No. of Bulbs: 7  
Dimmable