

NEW

DEGRADE by Patricia Urquiola

Composición de fibras: 100% lana virgen
 Peso total aprox.: 4 Kg/m²
 Altura total aprox.: 10 mm
 Técnica de fabricación: Hand knotted
 Nudos/m²: 140.000

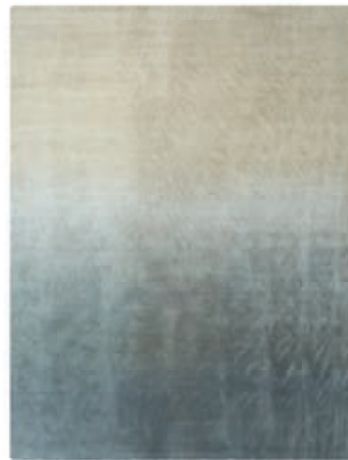
Fibre composition: 100% new wool
 Total approx. weight: 4 Kg/m² / 0.82 lbs/ft²
 Total approx. height: 10 mm / 0.39"
 Manufacturing technique: Hand knotted
 Knots/m²: 140.000



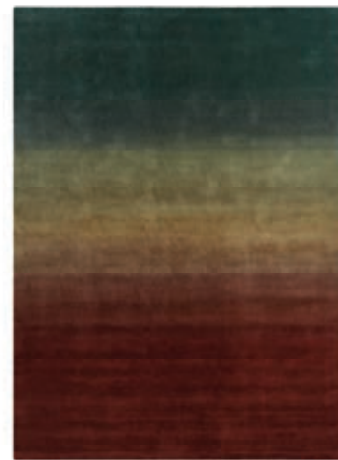
170x240 cm / 5'7"x7'11"
 16,3 Kg 0,06 m³

200x300 cm / 6'7"x9'10"
 24 Kg 0,10 m³

300x400 cm / 9'10"x13'2"
 48 Kg 0,14 m³



Beige-Grey



Petrol-Wine



MIRAGE by Patricia Urquiola

Composición de fibras: 100% lana de Nueva Zelanda
 Peso total aprox.: 3,2 Kg/m²
 Altura total aprox.: 12 mm
 Técnica de fabricación: Hand knotted
 Nudos/m²: 155.000

Fibre composition: 100% New Zealand wool
 Total approx. weight: 3,2 Kg/m² / 0.65 lbs/ft²
 Total approx. height: 12 mm / 0.47"
 Manufacturing technique: Hand knotted
 Knots/m²: 155.000



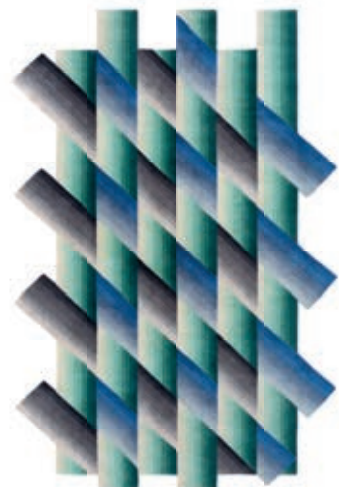
200x310 cm / 6'7"x10'2"
 18,4 Kg 0,11 m³



Orange



Nude



Blue

HIDRAULIC by GAN

Composición de fibras: 100% lana
 Peso total aprox.: 1,7 Kg/m²
 Altura total aprox.: 8 mm
 Técnica de fabricación: Hand knotted
 Nudos/m²: 24.000

Fibre composition: 100% wool
 Total approx. weight: 1,7 Kg/m² / 0.35 lbs/ft²
 Total approx. height: 8 mm / 0.31"
 Manufacturing technique: Hand knotted
 Knots/m²: 24.000



170x240 cm / 5'7"x7'11"
 8,3 Kg 0,05 m³

200x300 cm / 6'7"x9'10"
 12 Kg 0,09 m³

300x400 cm / 9'10"x13'2"
 24,1 Kg 0,17 m³



Multi

JAPAN by GAN

Composición de fibras: 100% lana
 Hilo tie dye
 Peso total aprox.: 2,1 Kg/m²
 Altura total aprox.: 10 mm
 Técnica de fabricación: Hand knotted
 Nudos/m²: 35.000

Fibre composition: 100% wool
 Tie dye yarn
 Total approx. weight: 2,1 Kg/m² / 0.43 lbs/ft²
 Total approx. height: 10 mm / 0.39"
 Manufacturing technique: Hand knotted
 Knots/m²: 35.000



170x240 cm / 5'7"x7'11"
 9 Kg 0,05 m³

200x300 cm / 6'7"x9'10"
 12,5 Kg 0,07 m³



Coral

ÍNDIGO by GAN

Composición de fibras: Lana + Viscosa
 Peso total aprox.: 1,7 Kg/m²
 Altura total aprox.: 10 mm
 Técnica de fabricación: Hand knotted
 Nudos/m²: 35.000

Fibre composition: Wool + Viscosa
 Total approx. weight: 1,7 Kg/m² / 0.35 lbs/ft²
 Total approx. height: 10 mm / 0.39"
 Manufacturing technique: Hand knotted
 Knots/m²: 35.000



170x240 cm / 5'7"x7'11"
 9,5 Kg 0,04 m³

200x300 cm / 6'7"x9'10"
 15 Kg 0,06 m³



Indigo