

DEDON

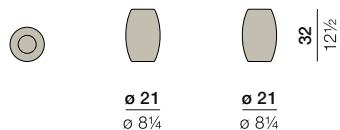
DALA LANTERN & PLANTER

DALA

Lantern

Design by **Stephen Burks** | Item code: **073060** | Weight **1 kg/3 lbs** | Volume **0,02 m³/1 cu ft**

Measurements



Collection: Designed using the same mesh structure and environmentally-friendly fiber as the DALA furniture, the DALA planter and lantern are the perfect complement to any DEDON collection. Each piece is hand-woven using richly textured strands of DEDON's groundbreaking new ecological fiber.

Lantern: This DALA lantern features open weaving to let candlelight through.

Frame: Aluminum

Finishing: Frame is electrostatic powder-coated. Fiber is High-Density Polyethylene (HDPE).

Characteristics: Colorful, distinctive, innovative, versatile, practical, ecological

Options: An additional hanger is available to hang the lantern

Frame Maintenance: Clean with soft cloth and warm water. Contact with chlorinated pool water should be avoided. Areas splashed with chlorinated water should be cleaned with ordinary water.

Fiber Standard



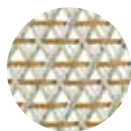
164
rioja



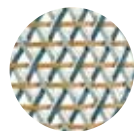
165
ubud



166
cuba



167
ibiza



168
bahamas

Additional Items



Candle holder



Hanger for lantern
073091000

To learn more about DEDON, our collections and warranty policy, please visit our website –

www.dedon.de

10/20

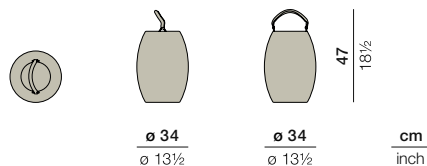
DEDON

DALA

Lantern

Design by **Stephen Burks** | Item code: **073061** | Weight **2 kg/5 lbs** | Volume **0,06 m³/2 cu ft**

Measurements



Collection: Designed using the same mesh structure and environmentally-friendly fiber as the DALA furniture, the DALA planter and lantern are the perfect complement to any DEDON collection. Each piece is hand-woven using richly textured strands of DEDON's groundbreaking new ecological fiber.

Lantern: This DALA lantern features open weaving to let candlelight through. Elegant, man-made leather handles allow you to hang it or place it on the ground.

Frame: Aluminum

Finishing: Frame is electrostatic powder-coated. Fiber is High-Density Polyethylene (HDPE).

Characteristics: Colorful, distinctive, innovative, versatile, practical, ecological

Options: An additional hanger is available to hang the lantern

Frame Maintenance: Clean with soft cloth and warm water. Contact with chlorinated pool water should be avoided. Areas splashed with chlorinated water should be cleaned with ordinary water.

Fiber Standard



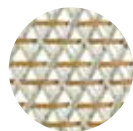
164
rioja



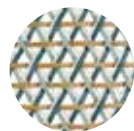
165
ubud



166
cuba



167
ibiza



168
bahamas

Additional Items



Candle holder



Hanger for lantern
073092000

To learn more about DEDON, our collections and warranty policy, please visit our website –

www.dedon.de

10/20

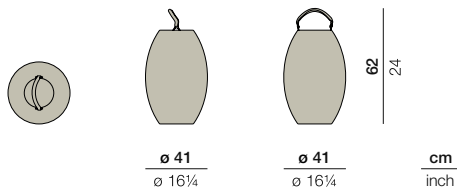
DEDON

DALA

Lantern

Design by **Stephen Burks** | Item code: **073062** | Weight **2,5 kg/6 lbs** | Volume **0,11 m³/4 cu ft**

Measurements



Collection: Designed using the same mesh structure and environmentally-friendly fiber as the DALA furniture, the DALA planter and lantern are the perfect complement to any DEDON collection. Each piece is hand-woven using richly textured strands of DEDON's groundbreaking new ecological fiber.

Lantern: This DALA lantern features open weaving to let candlelight through. Elegant, man-made leather handles allow you to hang it or place it on the ground.

Frame: Aluminum

Finishing: Frame is electrostatic powder-coated. Fiber is High-Density Polyethylene (HDPE).

Characteristics: Colorful, distinctive, innovative, versatile, practical, ecological

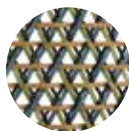
Options: An additional hanger is available to hang the lantern

Frame Maintenance: Clean with soft cloth and warm water. Contact with chlorinated pool water should be avoided. Areas splashed with chlorinated water should be cleaned with ordinary water.

Fiber Standard



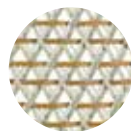
164
rioja



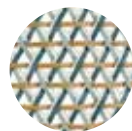
165
ubud



166
cuba



167
ibiza



168
bahamas

Additional Items



Candle holder



Hanger for lantern
073092000

To learn more about DEDON, our collections and warranty policy, please visit our website –

www.dedon.de

10/20

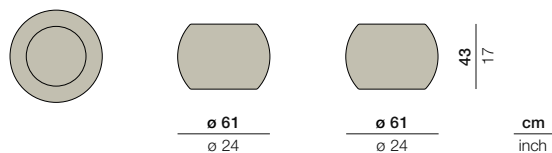
DEDON

DALA

Planter S

Design by **Stephen Burks** | Item code: **073050** | Weight **5 kg/11 lbs** | Volume **0,17 m³/6 cu ft**

Measurements



Collection: Designed using the same mesh structure and environmentally-friendly fiber as the DALA furniture, the DALA planter and lantern are the perfect complement to any DEDON collection. Each piece is hand-woven using richly textured strands of DEDON's groundbreaking new ecological fiber.

Planter: This DALA planter brings subtle sophistication to any outdoor living room. It features a rotomolded internal pot.

Frame: Aluminum

Finishing: Frame is electrostatic powder-coated. Fiber is High-Density Polyethylene (HDPE).

Characteristics: Colorful, distinctive, innovative, versatile, practical, ecological

Frame Maintenance: Clean with soft cloth and warm water. Contact with chlorinated pool water should be avoided. Areas splashed with chlorinated water should be cleaned with ordinary water.

Fiber Standard



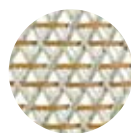
164
rioja



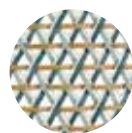
165
ubud



166
cuba



167
ibiza



168
bahamas

Additional Items



41 16 $\frac{1}{4}$

$\phi 39,5 \phi 15\frac{1}{2}$

Removable inner planter

To learn more about DEDON, our collections and warranty policy, please visit our website –

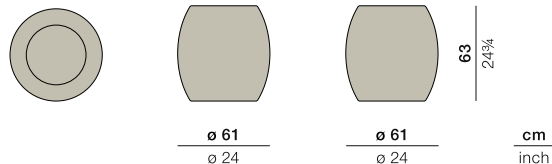
www.dedon.de

DALA

Planter M

Design by **Stephen Burks** | Item code: **073052** | Weight **5 kg/11 lbs** | Volume **0,23 m³/6 cu ft**

Measurements



Collection: Designed using the same mesh structure and environmentally-friendly fiber as the DALA furniture, the DALA planter and lantern are the perfect complement to any DEDON collection. Each piece is hand-woven using richly textured strands of DEDON's groundbreaking new ecological fiber.

Planter: This DALA planter brings subtle sophistication to any outdoor living room. It features a rotomolded internal pot.

Frame: Aluminum

Finishing: Frame is electrostatic powder-coated. Fiber is High-Density Polyethylene (HDPE).

Characteristics: Colorful, distinctive, innovative, versatile, practical, ecological

Frame Maintenance: Clean with soft cloth and warm water. Contact with chlorinated pool water should be avoided. Areas splashed with chlorinated water should be cleaned with ordinary water.

Fiber Standard



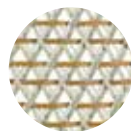
164
rioja



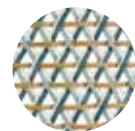
165
ubud



166
cuba



167
ibiza



168
bahamas

Additional Items



41 16/4

$\varnothing 39,5$ $\varnothing 15\frac{1}{2}$

Removable inner planter

To learn more about DEDON, our collections and warranty policy, please visit our website –

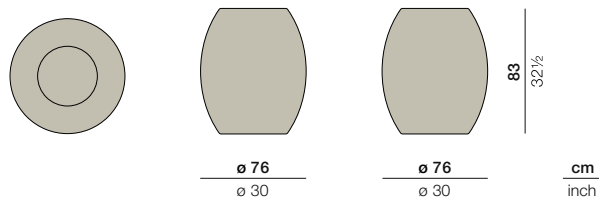
www.dedon.de

DALA

Planter L

Design by **Stephen Burks** | Item code: **073051** | Weight **8 kg/18 lbs** | Volume **0,48 m³/17 cu ft**

Measurements



Collection: Designed using the same mesh structure and environmentally-friendly fiber as the DALA furniture, the DALA planter and lantern are the perfect complement to any DEDON collection. Each piece is hand-woven using richly textured strands of DEDON's groundbreaking new ecological fiber.

Planter: This DALA planter brings subtle sophistication to any outdoor living room. It features a rotomolded internal pot.

Frame: Aluminum

Finishing: Frame is electrostatic powder-coated. Fiber is High-Density Polyethylene (HDPE).

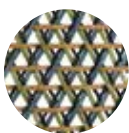
Characteristics: Colorful, distinctive, innovative, versatile, practical, ecological

Frame Maintenance: Clean with soft cloth and warm water. Contact with chlorinated pool water should be avoided. Areas splashed with chlorinated water should be cleaned with ordinary water.

Fiber Standard



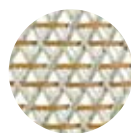
164
rioja



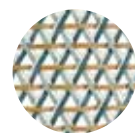
165
ubud



166
cuba



167
ibiza



168
bahamas

Additional Items



41 16¼

$\phi 39,5$ $\phi 15\frac{1}{2}$

Removable inner planter

To learn more about DEDON, our collections and warranty policy, please visit our website –

www.dedon.de

10/20

DEDON