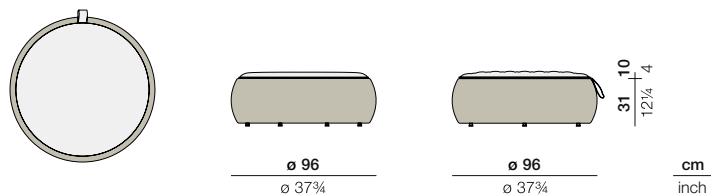


# DALA

## Footstool / Coffee table

Design by **Stephen Burks** | Item code: **073037** | Weight **6,7 kg/15 lbs** | Volume **0,29 m³/10 cu ft** | COM (Customer Own Material): **/3.00 yd** (plain fabric only)

### Measurements



**Collection:** DALA takes inspiration from the artisanship and improvised seating arrangements of the developing world. Surface and structure merge in this versatile collection by Stephen Burks, each piece starting as a powder-coated frame of aluminum mesh through which DEDON's master weavers thread colorful strands of our revolutionary new ecological fiber.

**Footstool / Coffee table:** The same diameter as the lounge chair, this comfortable footstool doubles as casual seating. And with its color-coordinated glass top, it can also be used as a coffee table.

**Frame:** Aluminum

**Finishing:** Frame is electrostatic powder-coated. Fiber is High-Density Polyethylene (HDPE). Tabletop is lacquered glass with satinated stripes.

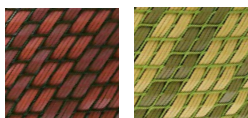
**Characteristics:** Colorful, distinctive, innovative, versatile, practical, ecological

**Options:** This item may be either used as coffee table (when glass top is applied) or footstool (when cushion is applied).

**Frame Maintenance:** Clean with soft cloth and warm water. Contact with chlorinated pool water should be avoided. Areas splashed with chlorinated water should be cleaned with ordinary water.

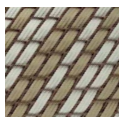
**Cushion Maintenance:** All cushion covers can be removed and washed.

### Colors



532  
fire

533  
grass



534  
stone

### Additional Items



Cover

### Fabrics

fire: **95073037735**  
grass: **95073037761**  
stone: **95073037762**

Please see Fabric Options Fact Sheet

### Tabletop

Glass fire  
**22273037313**

Glass grass  
**22273037312**

Glass stone  
**22273037314**

To learn more about DEDON, our collections and warranty policy, please visit our website –

[www.dedon.de](http://www.dedon.de)

0116

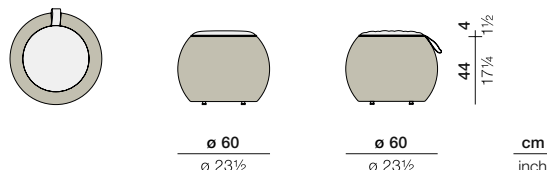
**DEDON**

# DALA

## Stool / Side table

Design by **Stephen Burks** | Item code: **073035** | Weight **4,5 kg/10 lbs** | Volume **0,16 m³/6 cu ft** | COM (Customer Own Material): **/2.00 yd** (plain fabric only)

### Measurements



**Collection:** DALA takes inspiration from the artisanship and improvised seating arrangements of the developing world. Surface and structure merge in this versatile collection by Stephen Burks, each piece starting as a powder-coated frame of aluminum mesh through which DEDON's master weavers thread colorful strands of our revolutionary new ecological fiber.

**Stool/Side table:** Lightweight and easy to move around, this comfortable, high DALA stool is great for casual seating. With its color-coordinated glass top, it can also be used as a side table.

**Frame:** Aluminum

**Finishing:** Frame is electrostatic powder-coated. Fiber is High-Density Polyethylene (HDPE). Tabletop is lacquered glass with satinated stripes.

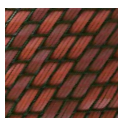
**Characteristics:** Colorful, distinctive, innovative, versatile, practical, ecological

**Options:** This item may be either used as side table (when glass top is applied) or stool (when cushion is applied).

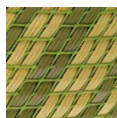
**Frame Maintenance:** Clean with soft cloth and warm water. Contact with chlorinated pool water should be avoided. Areas splashed with chlorinated water should be cleaned with ordinary water.

**Cushion Maintenance:** All cushion covers can be removed and washed.

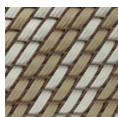
### Colors



532  
fire



533  
grass



534  
stone

### Additional Items



Cover

### Fabrics

fire: **95073033735**  
grass: **95073033761**  
stone: **95073033762**

Please see Fabric Options Fact Sheet

### Tabletop

Glass fire  
**22273033313**

Glass grass  
**22273033312**

Glass stone  
**22273033314**

To learn more about DEDON, our collections and warranty policy, please visit our website –

[www.dedon.de](http://www.dedon.de)

0116

**DEDON**