



BIGHT

COLLECTION

The refined Bight collection combines comfort and durability in furniture that equals the quality of indoor furniture. The chairs stand out for their simplicity and have a woven seat and backrest in one piece made from Essegoma polyolefin weave. The seat almost seems to 'float' in the slender frame of teak wood from sustainably managed plantations in Indonesia. The slightly angled legs give the chairs an elegant look, while the semicircular backrest and the elegantly finished cushions provide exceptional comfort.

BY COVE
OUTDOOR



BIGHT

3 SEATER and LOUNGE CHAIR

DESIGNER

Cove Outdoor

DESCRIPTION

With a natural finish teak frame and complex, hand woven man-made rope backrest, Bight marries modern technology with artisanal techniques creating a thoroughly timeless and elegantly aesthetic result.

MATERIALS

Frame : Solid teak frame/ Essegoma polyolefin weave

Cover : Ateja sunproof southend 130 fabric

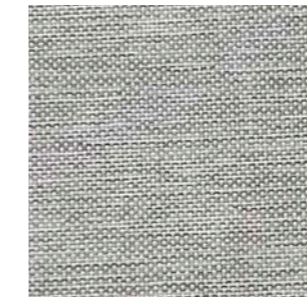
Table top :

FABRIC

Material : 100% solution dyed olefin

FINISHES

FABRIC



Ateja sunproof southend 130

WEAVE



Ivory weave

TEAK

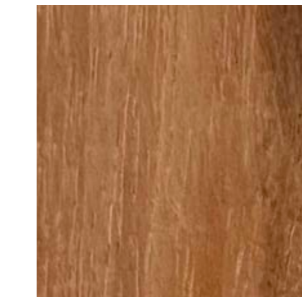


TABLE TOP



Arabescato natural ceramic

TABLE TOP



Basalt black ceramic

BIGHT COLLECTION



LOUNGE CHAIR
Ateja sunproof southend 130/
Teak

ROUND COFFEE TABLE
Teak/Ceramic



DINING TABLE
Teak



3 SEATER SOFA
Shown in Ateja sunproof south-
end 130/Teak

**RECTANGLE COFFEE
TABLE**
Teak/Ceramic



LOUNGER
Shown in Ateja sunproof south-
end 130/Teak