



ARIKI

COLLECTION

Broad horizontal lines and assertive angles combine to form the bold, indulgent profile of Ariki. But Ariki is not just about first impressions. Look closer and details can be found that further emphasize Cove Outdoor's reputation for quality and design. Subtle details add a level of sophistication. Back straps are deliberately wide to unite materials used. And the junction between strap and teak is proudly displayed, creating a confident line that further unites all seating options.



DESIGNER

Cove Outdoor

DESCRIPTION

Ariki features heavy duty webbing made from polyester. Highly fade, rot and UV resistant, polyester® has a soft elastic feel to maximise comfort whilst retaining its original form. Ariki uses a natural teak frame.

MATERIALS

Frame : Natural teak.

Upholstery : Sunproof® Pallazo 143

Seat : Cushions : Cove Outdoor uses exclusively QuickDry Foam® by Urecel.

Table top : NA

FINISHES

FRAME



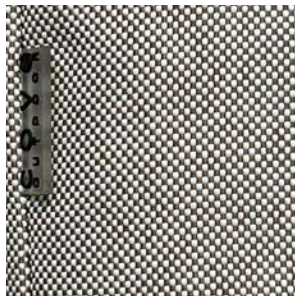
NATURAL TEAK

WEAVE



WEBBING

SUNPROOF FABRIC



PALLAZO 143

ARIKI COLLECTION



Corner



2 seater LAF open end



2 seater RAF open end



3 seater sofa



1 seater lounge chair