

Jr^Design
+ Fabrication



 TUMBRIL

TUMBRIL

CYCLONE TR

SCALE 1:40
KIT MODEL

Congratulations on your **Cyclone TR** kit!
Thank you so much for supporting our dream!

For a digital copy of all the instructions,
just scan the QR code below or
head on over to jrfabrication.co.uk/tutorials
where you can download it as a pdf
as well as check out the Painting Colour Guide and
see how other members of the JRDF community have painted theirs!



Make sure to follow us on **Facebook**, **Instagram** or **Twitter**
and join our **Discord** to stay connected with the rest of the JRDF community!

JRFABRICATION.CO.UK/SOCIAL



Gluing instructions

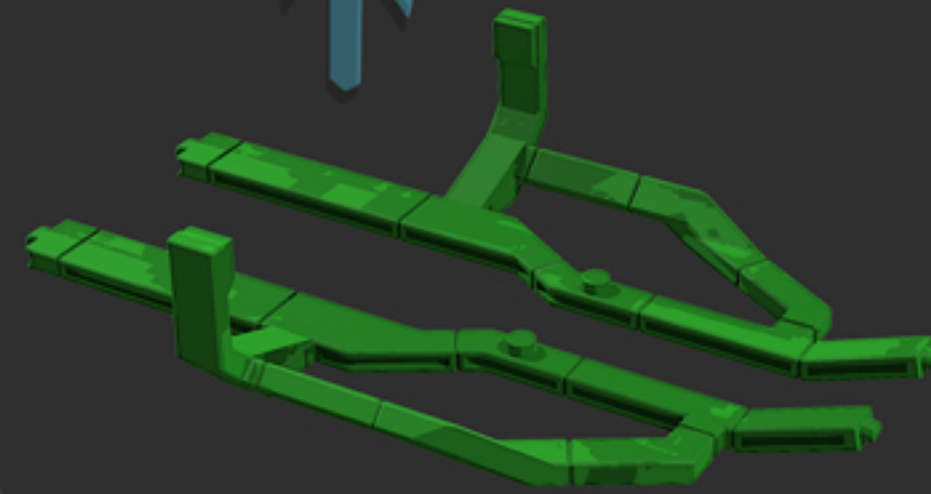
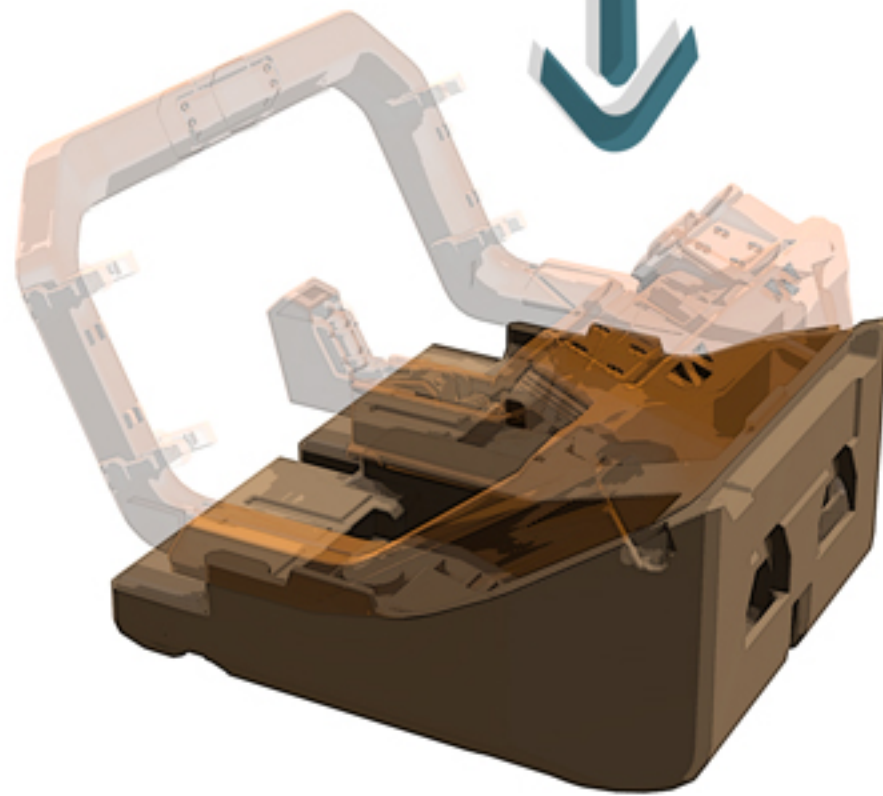
Use glue for steps that have the glue icon present.
Standard cyanoacrylate super glues work best.*

Attention: using glue when not indicated
may limit the model's articulation.

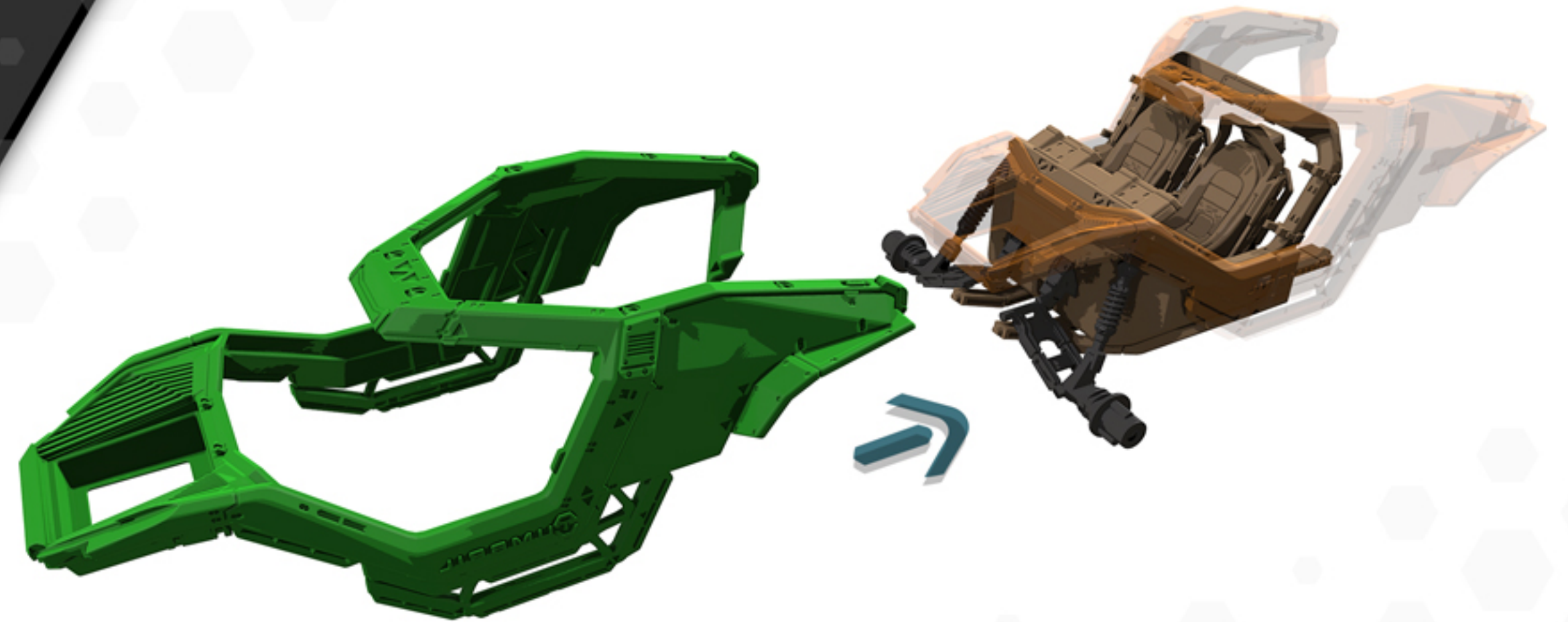
We recommend always doing a dry fit
of your model before gluing anything together.

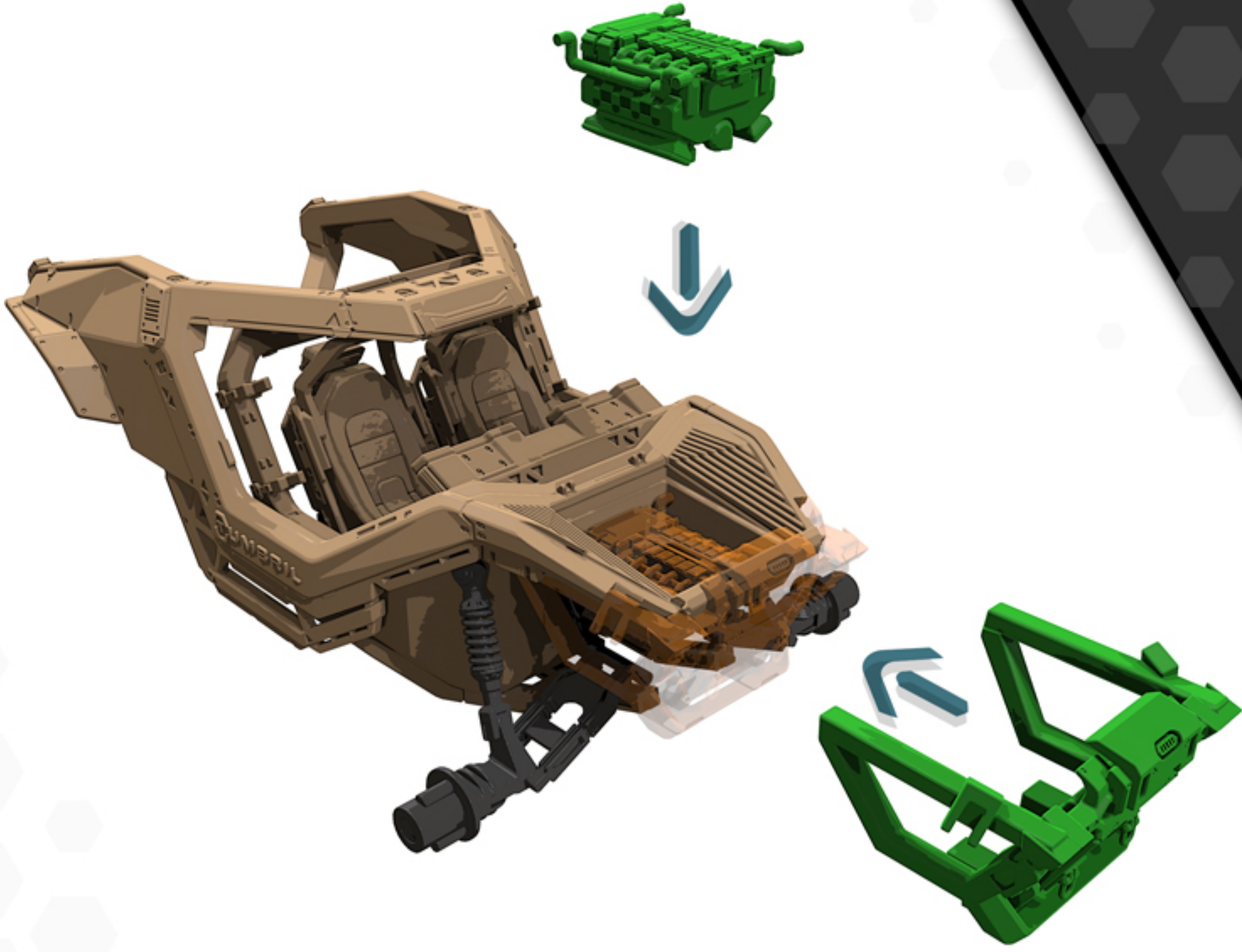
You may wish to pre-paint some parts before assembly.

* Standard model-making polycement glue will not work

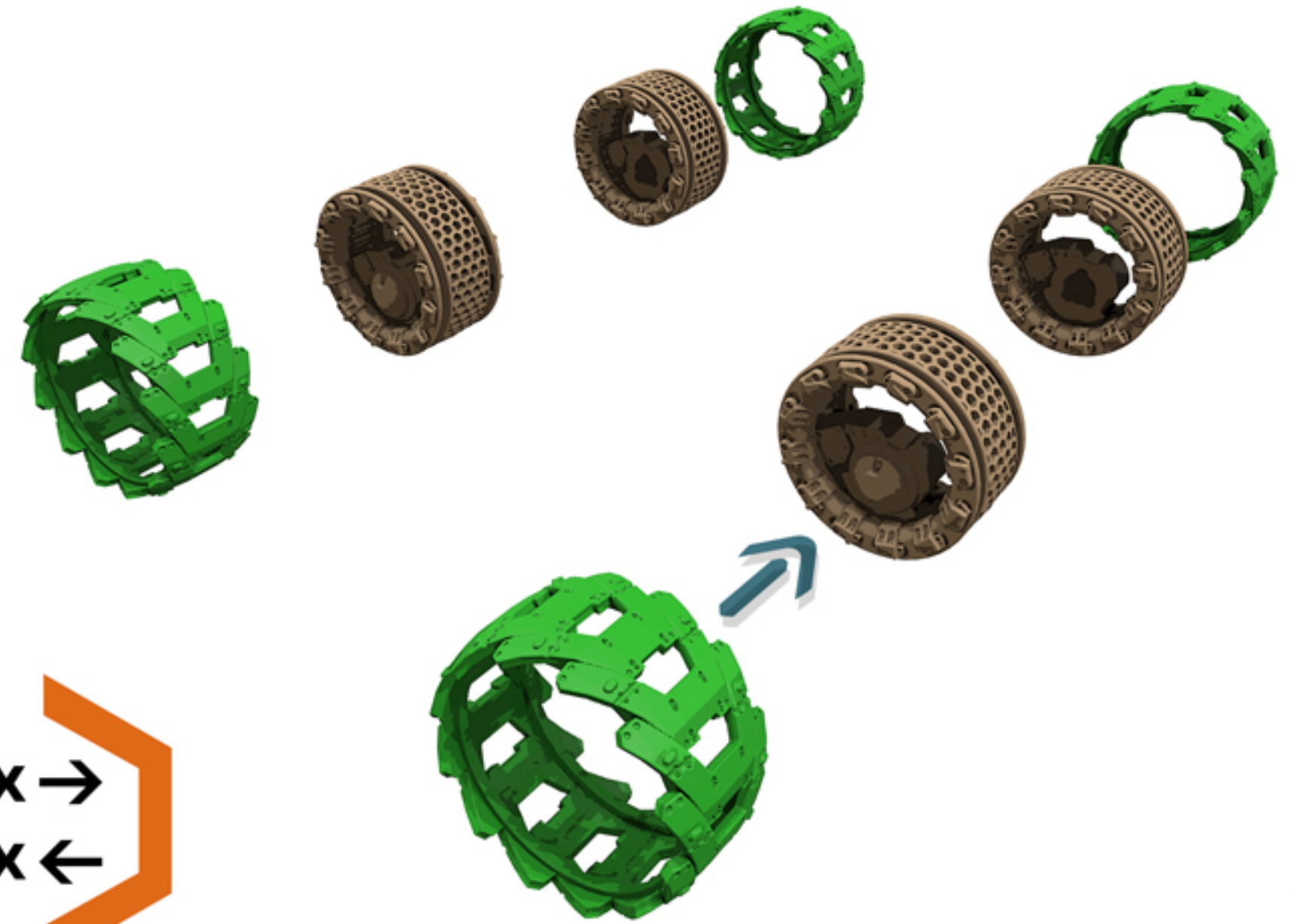
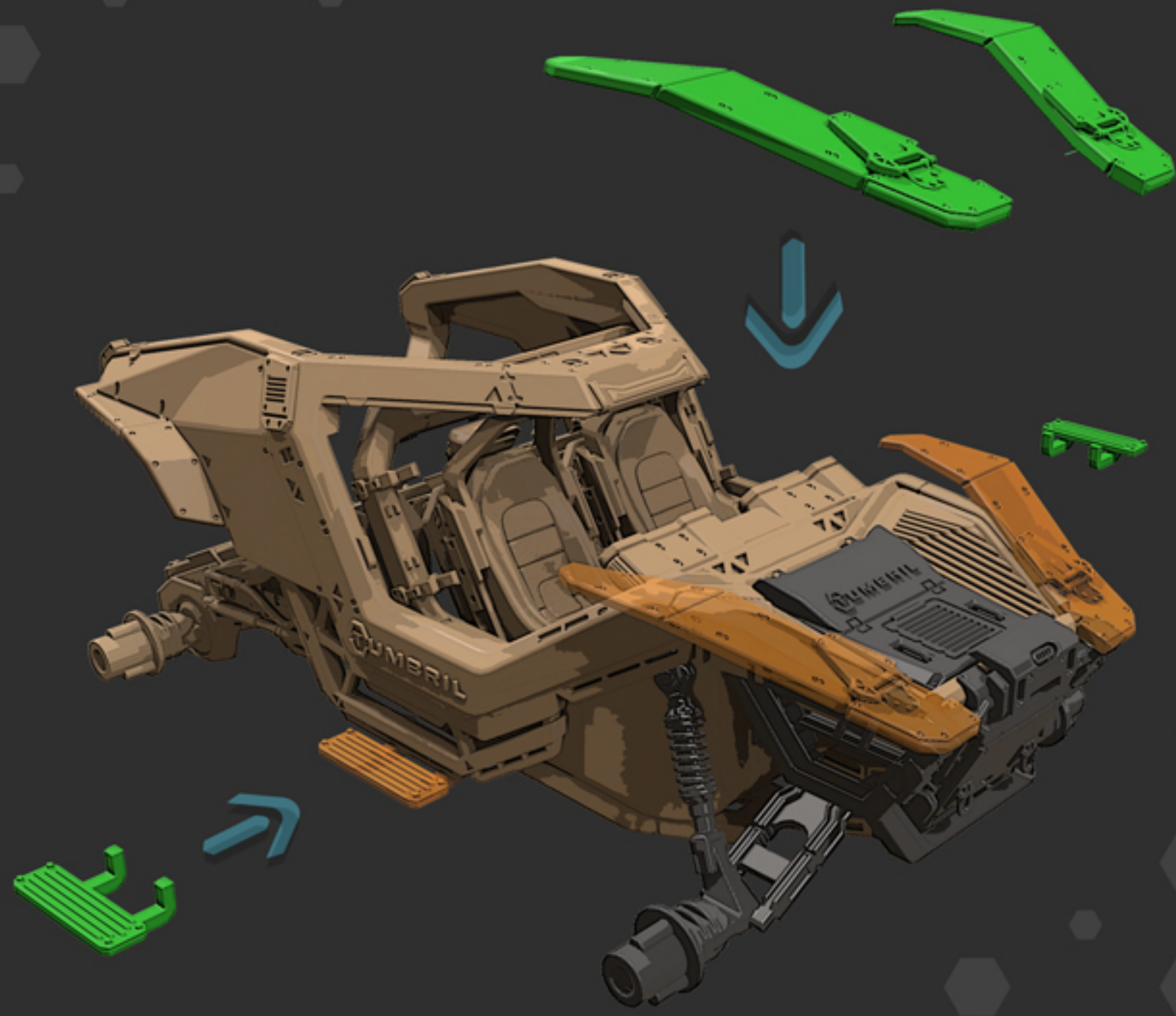


Tumbril Land Systems was originally established on Yar (Centauri II) in 2536





The Cyclone made its commercial debut to the Citizens of Stanton in 2947



2x →
2x ←



Tumbriel released a special, limited run of the Cyclone called the Dust Devil

The Cyclone is a light-armoured ground vehicle developed by **Tumbril Land Systems**. It can be adapted for multiple roles and forms the backbone of many ground operations that require harsh terrain to be traversed.

Tumbril Land Systems is a terrestrial vehicle manufacturer that reformed in 2941 after first closing in 2862. Originally founded on Yar (Centauri II) in 2536, its first product was the DX20, a wheeled vehicle designed by founders **Kavya Crosby** and **Aaron Douze**.

Due to the DX20's success, Tumbril became a military contractor during the First Tevarin War (2541-2546) where it became a fixture of the military. After the fall of the Messers in 2792, its military contracts were drastically reduced.

The company declared bankruptcy in 2862. In 2941, DevCo Group purchased the Tumbril name and resurrected the brand and its designs, updating them for the 30th century.

When looking for speed and firepower on the ground, look no further than the **Cyclone TR** and its bespoke combat platform to protect what's yours.



Upgraded armour provides increased protection for driver and crew



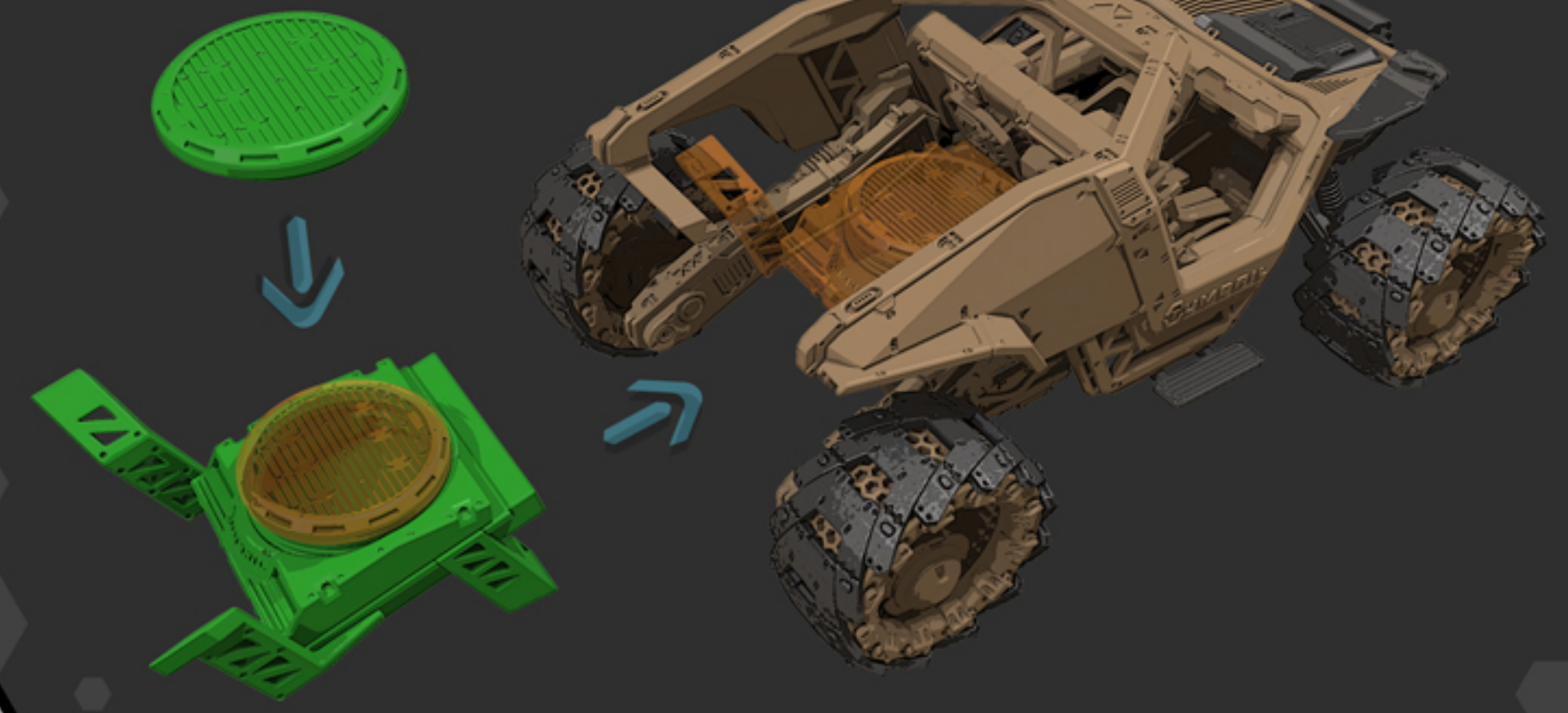
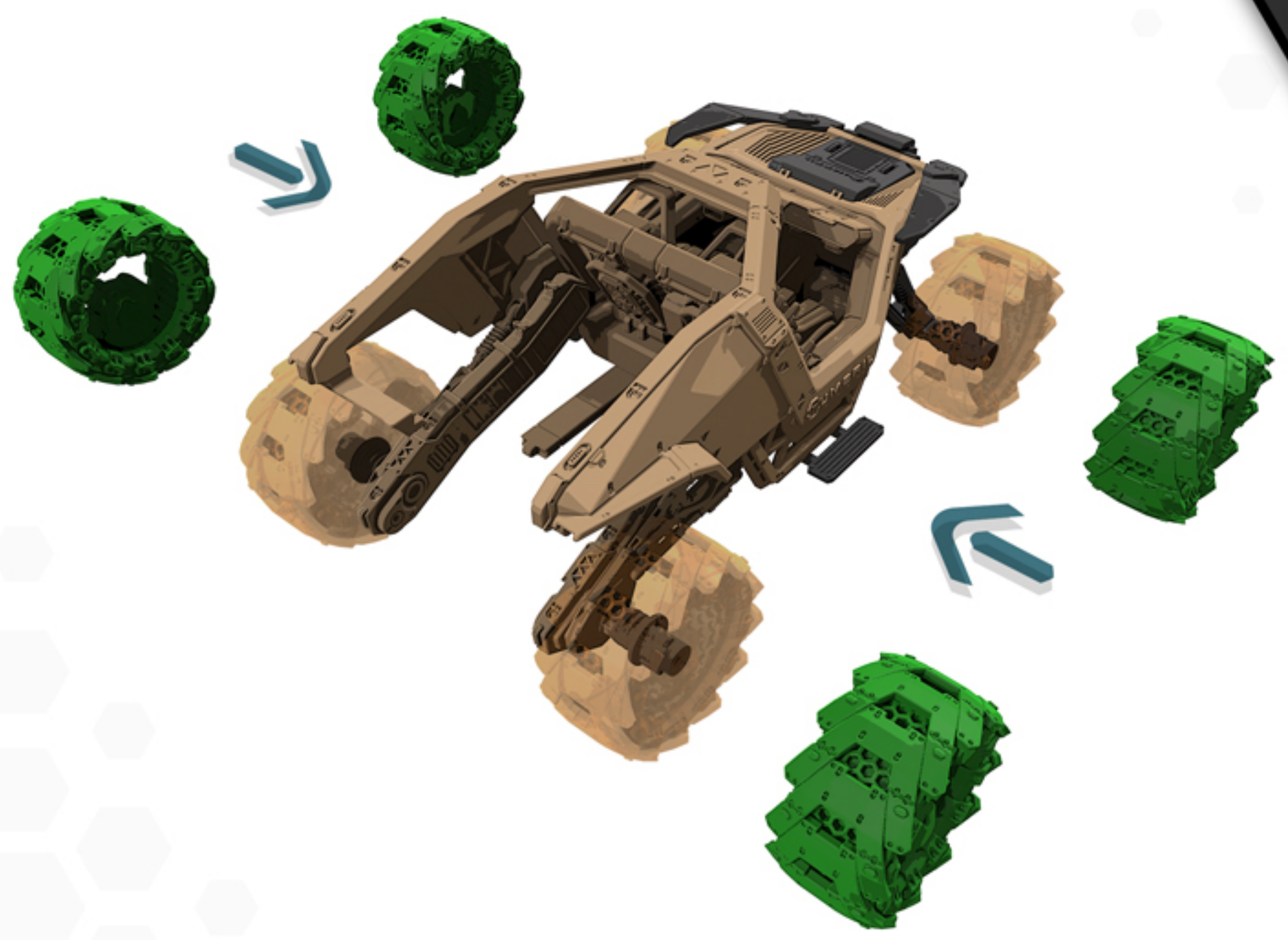
Features an interchangeable Size 1 weapon mount with responsive 360° field of fire



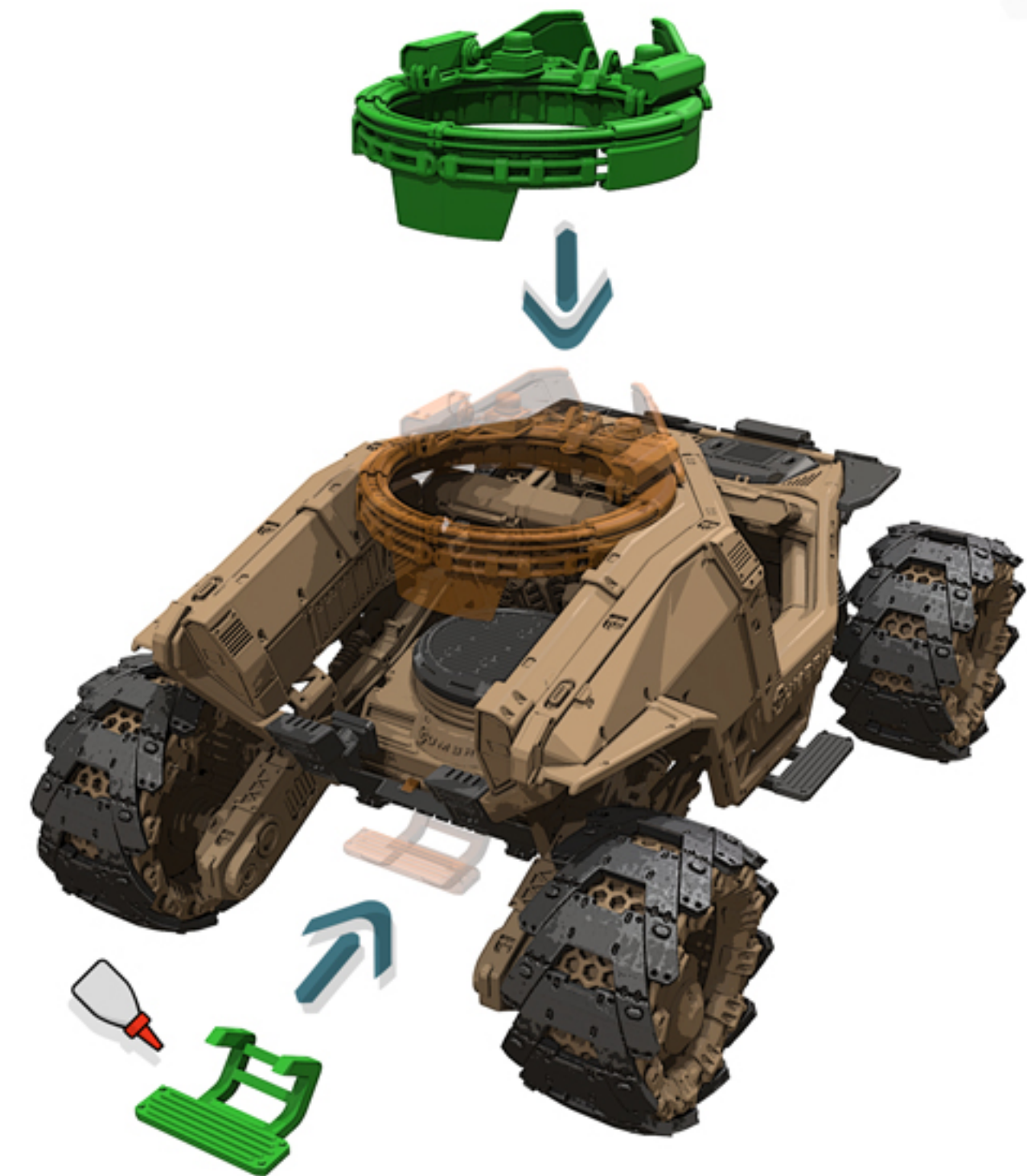
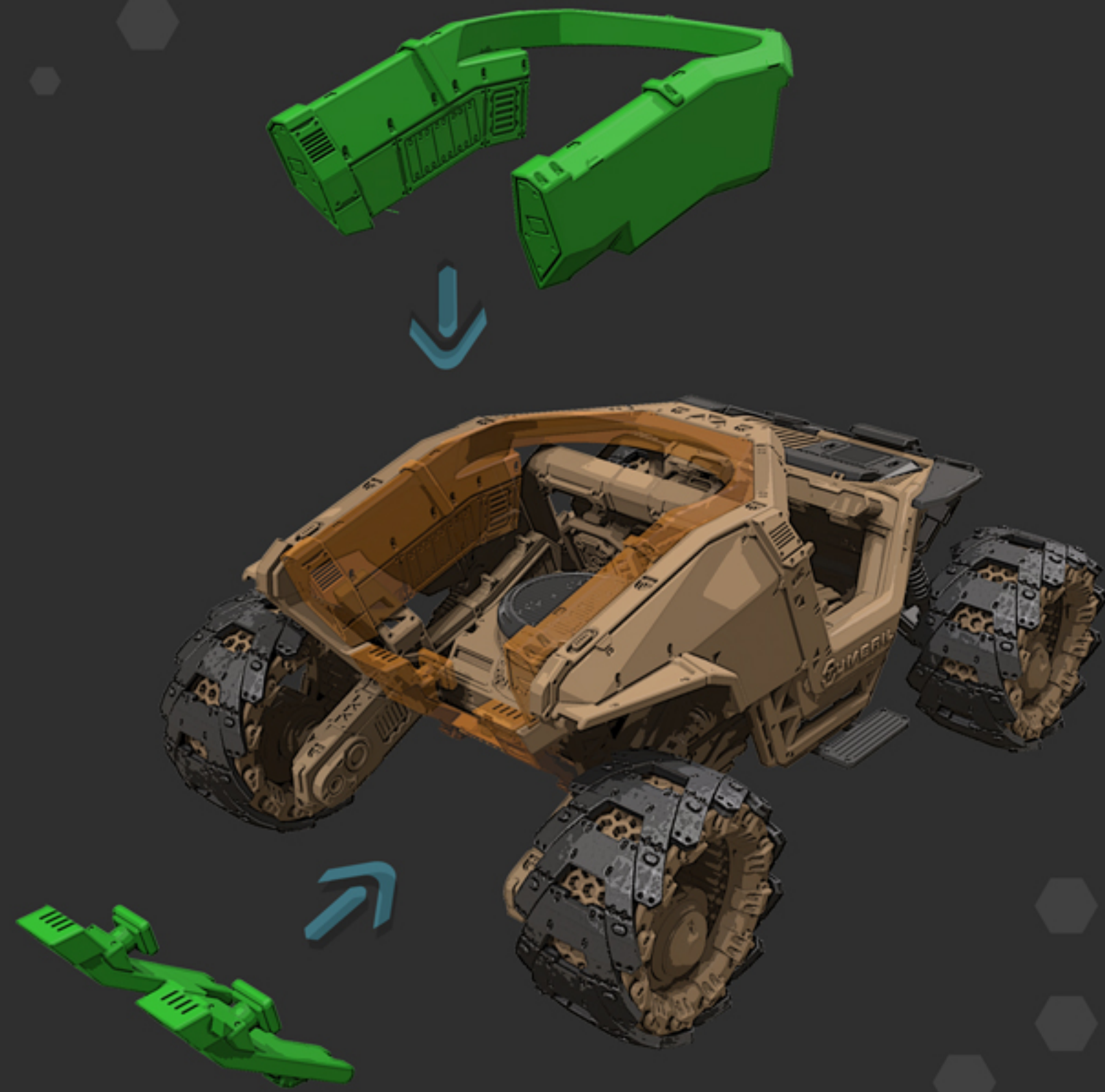
A fast mainstay for militia and security use in Ground Superiority

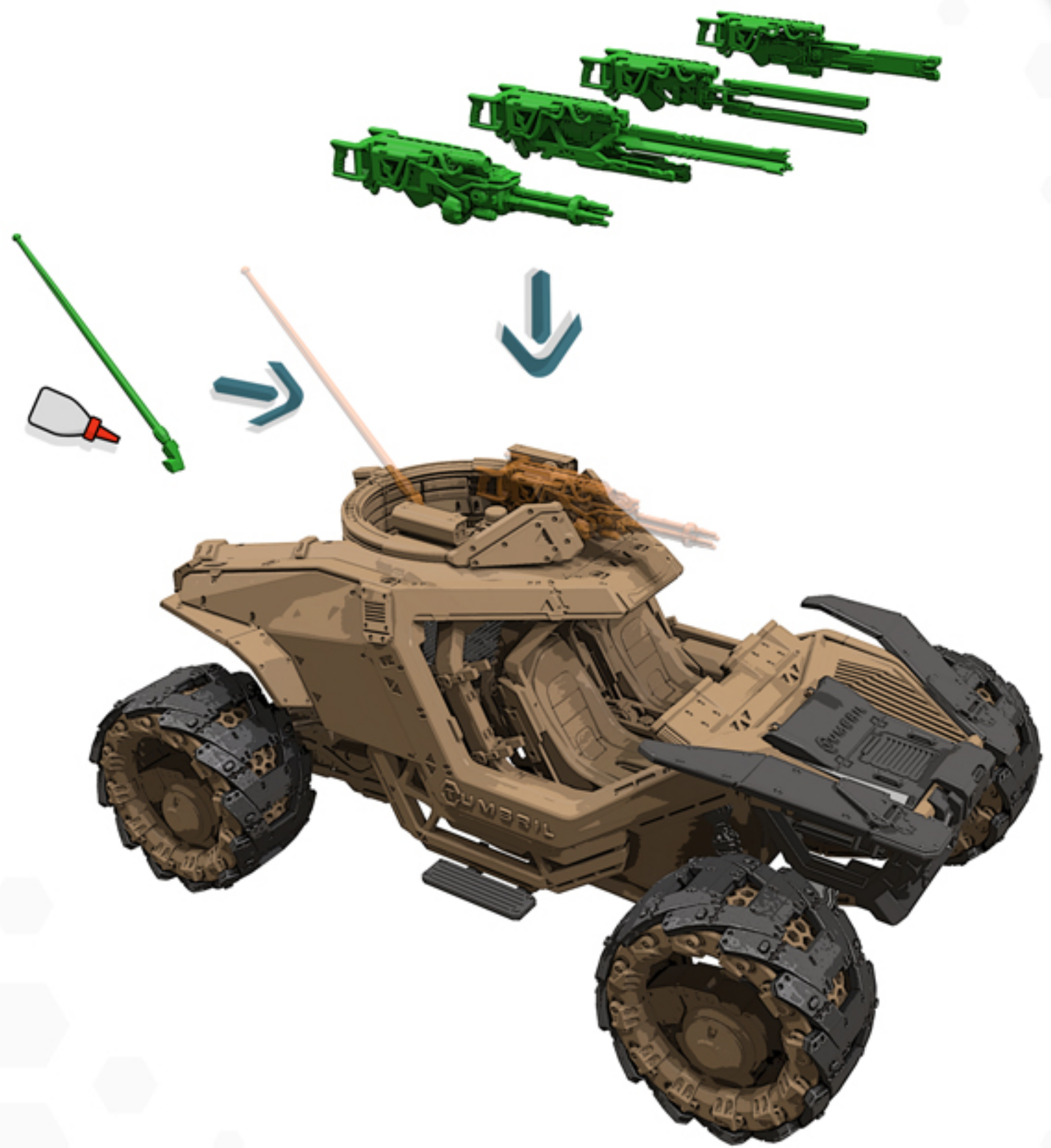
TOUGH. FAST. DURABLE





In order to operate a Cyclone, Citizens require a Class-G license or above





The Cyclone TR has 360° capable Size 1 turret mount operated by an extra crew member



Designed for militia and security use, the TR features upgraded armour



CREDITS

Kals Wilde

Geek Herder aka Project Manager
Product Photographer
Licensing Liason

John Raine

Model Designer
Chief Maker
R&D Director

James “Th3St0rmTr00p3r” Bressler

Model Extraction Wizard
Chief Character Artist

Hasgaha

Game Photographer

Darjan “Darjanator” Platinovšek

Pixel Wrangler: Cover Art, Instructions

Jerry “Myre” OB

Chief Wordifier

Special thanks go to **Paul Jones** and **Gavin Rothery** from **CIG**
who brought us the concept and original ingame Cyclone RT

**MADE IN
BRITAIN** 

JRFABRICATION.CO.UK

CONTENT USED WITH PERMISSION OF CLOUD IMPERIUM RIGHTS LLC AND CLOUD IMPERIUM RIGHTS LTD.

STAR CITIZEN® IS A REGISTERED TRADEMARK OF CLOUD IMPERIUM RIGHTS LLC.