

Jr<sup>D</sup>  
+F  
Fabrication



 TUMBRIL

# TUMBRIL

## CYCLONE RC

SCALE 1:40  
KIT MODEL



Congratulations on your **Cyclone RC** kit!  
Thank you so much for supporting our dream!

For a digital copy of all the instructions,  
just scan the QR code below or  
head on over to [jrfabrication.co.uk/tutorials](https://jrfabrication.co.uk/tutorials)  
where you can download it as a pdf  
as well as check out the Painting Colour Guide and  
see how other members of the JRDF community have painted theirs!



Make sure to follow us on **Facebook**, **Instagram** or **Twitter**  
and join our **Discord** to stay connected with the rest of the JRDF community!

**JRFABRICATION.CO.UK/SOCIAL**



## Gluing instructions

Use glue for steps that have the glue icon present.  
Standard cyanoacrylate super glues work best.\*

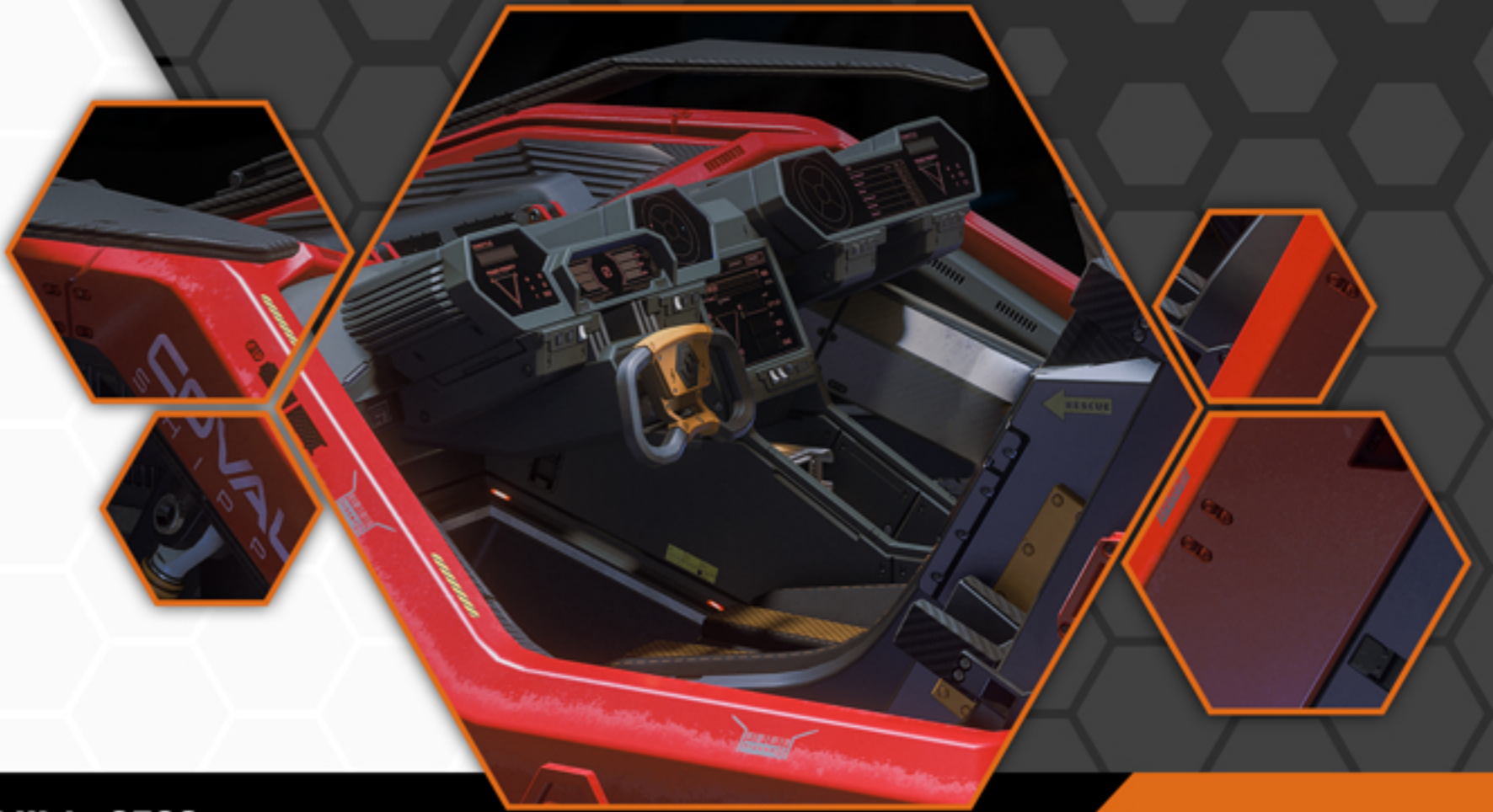
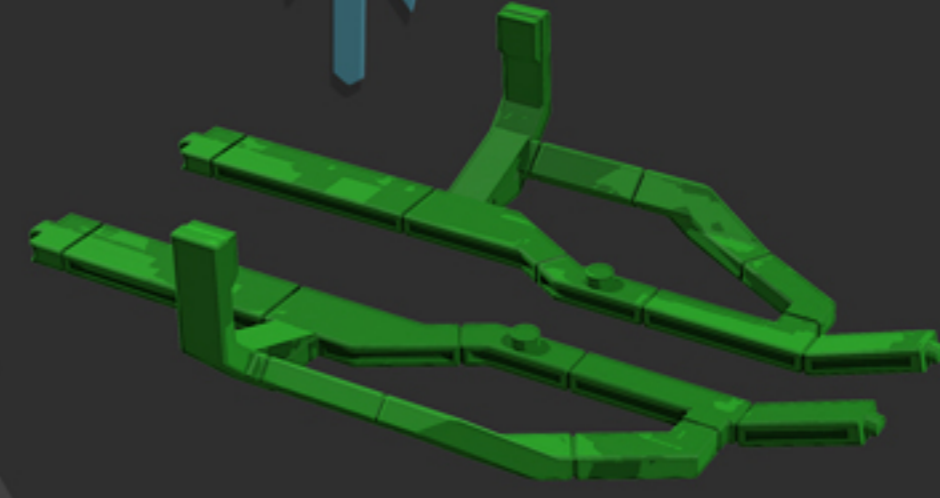
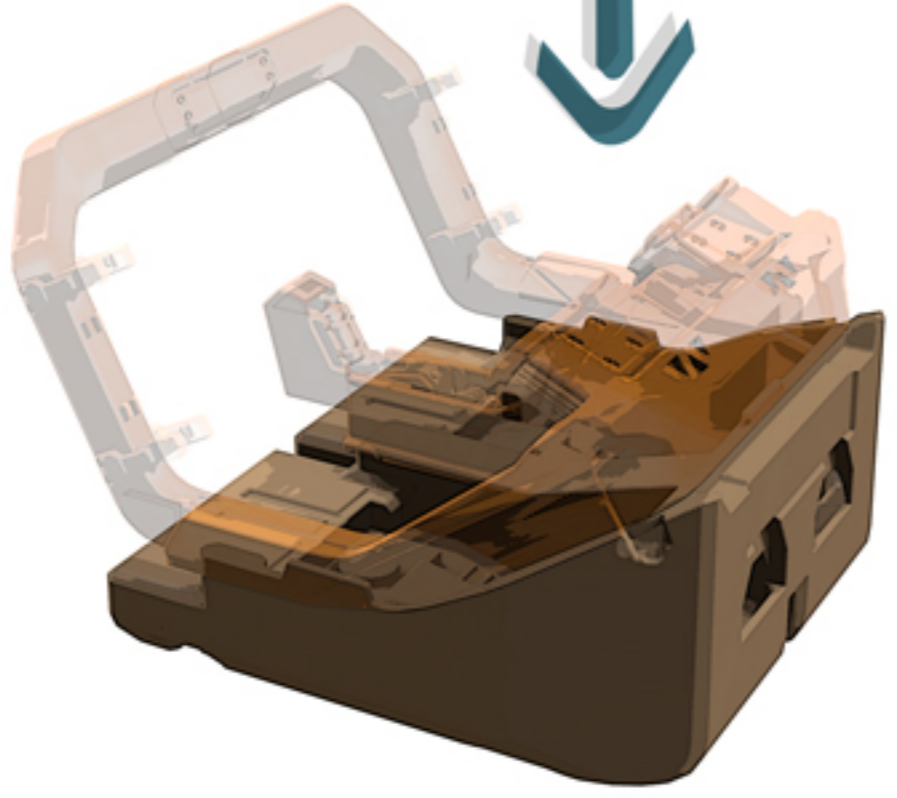
**Attention:** using glue when not indicated  
may limit the model's articulation.

We recommend always doing a dry fit  
of your model before gluing anything together.

You may wish to pre-paint some parts before assembly.

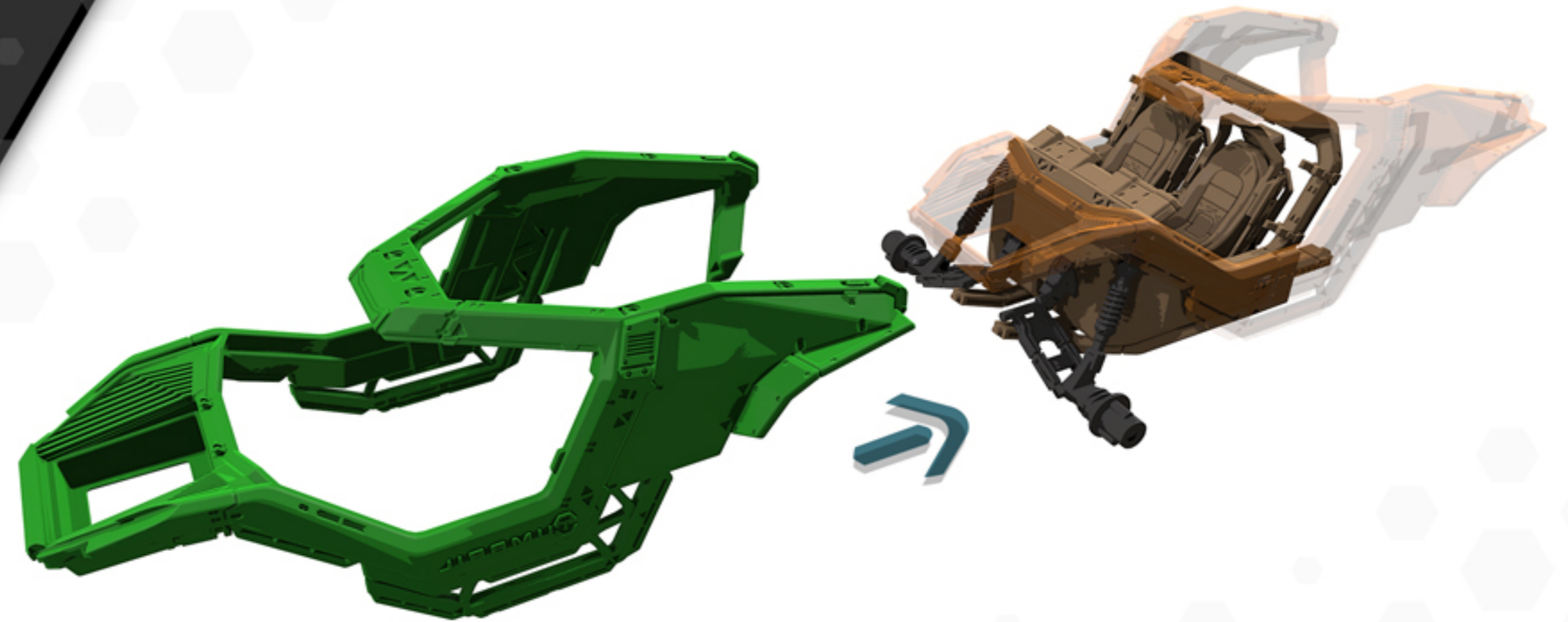
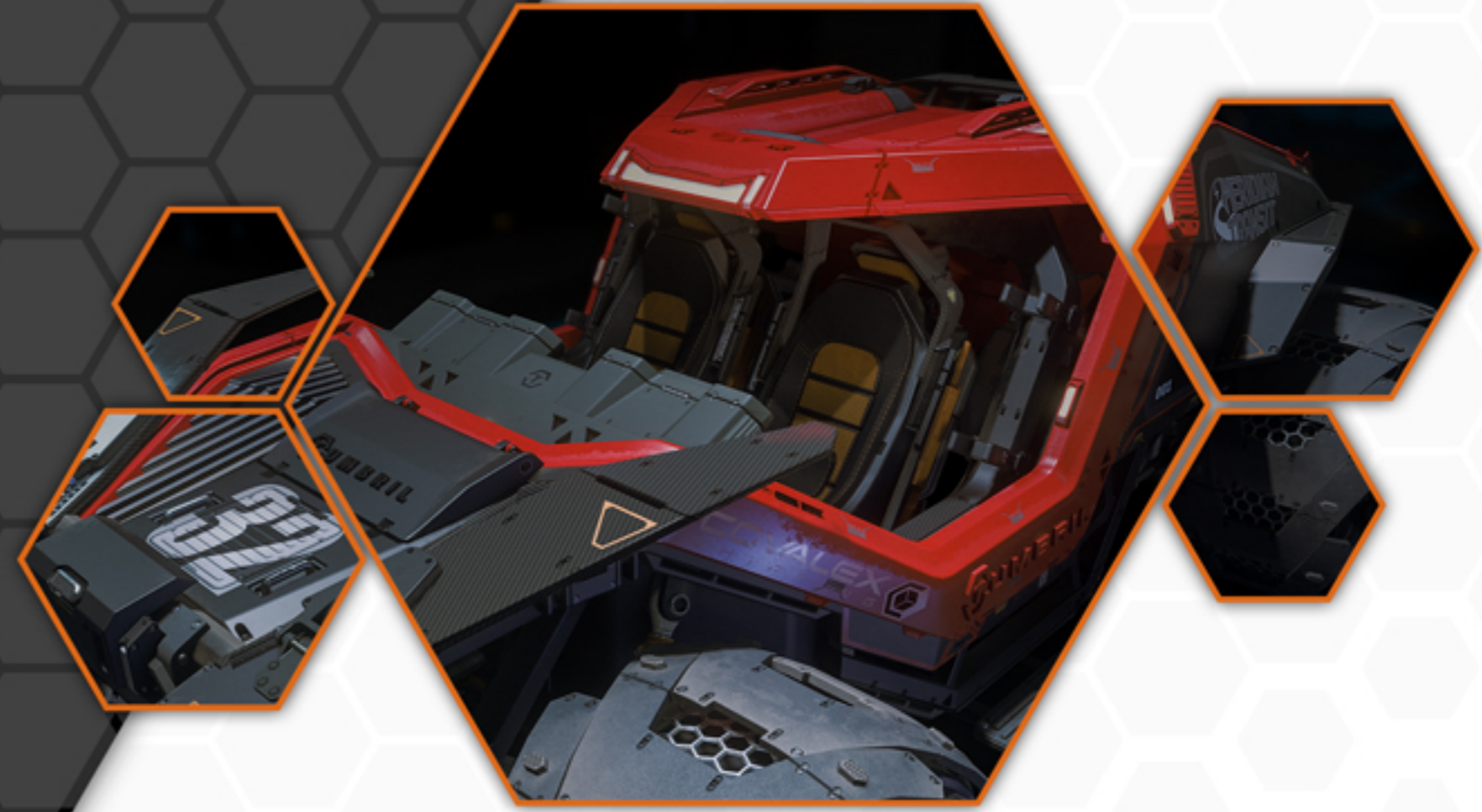
\* Standard model-making polycement glue will not work



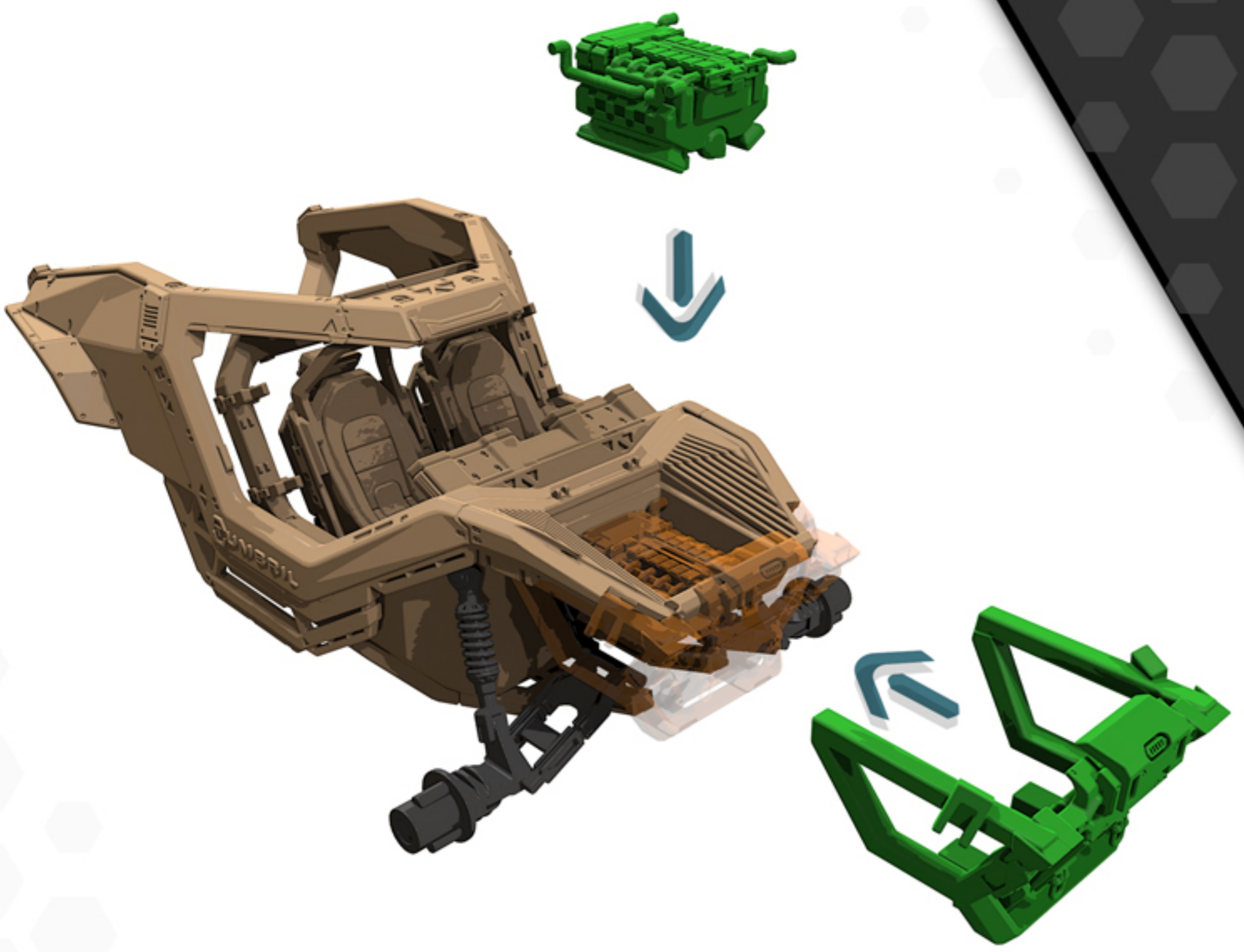


Tumbril Land Systems was originally established on Yar (Centauri II) in 2536



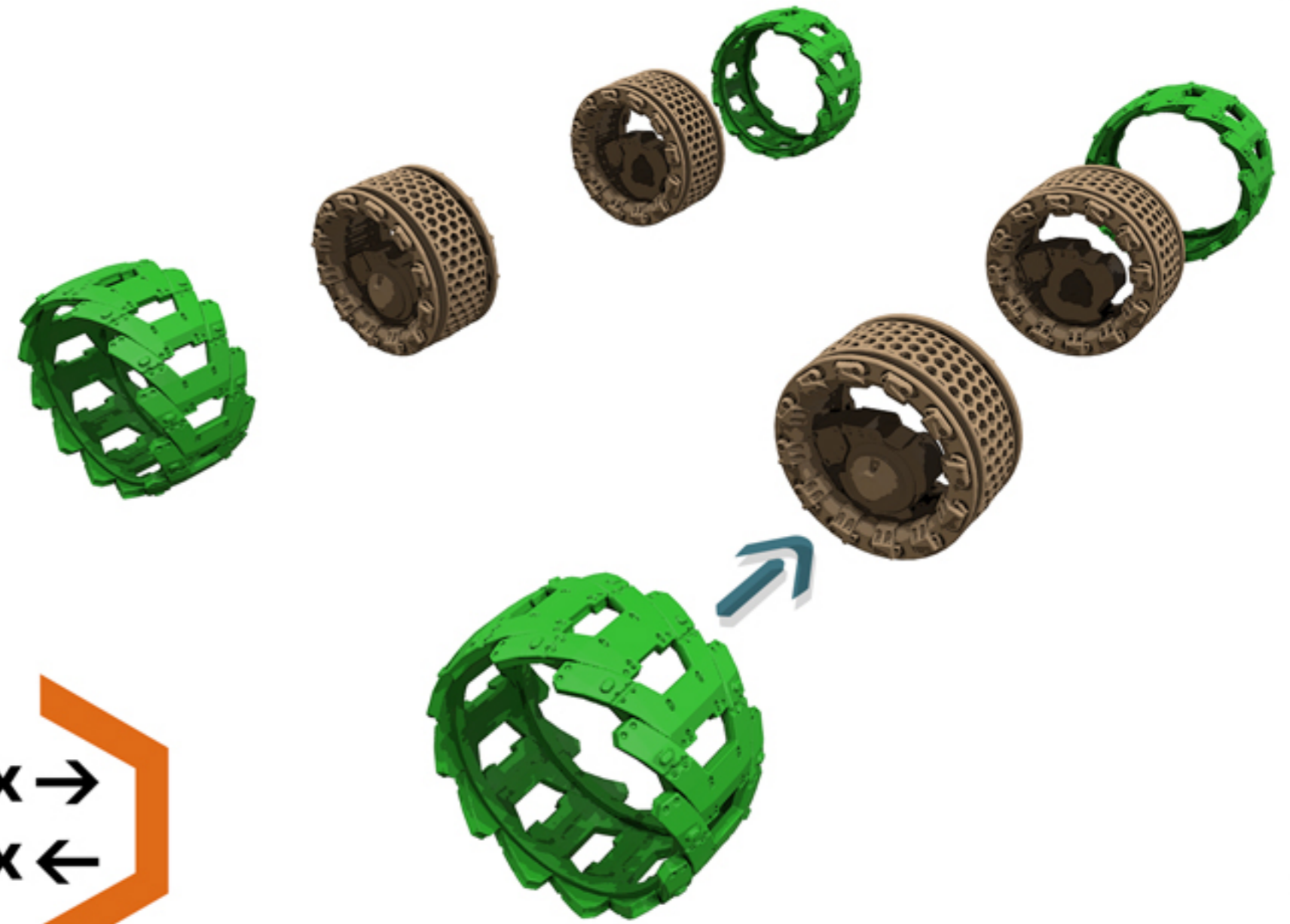
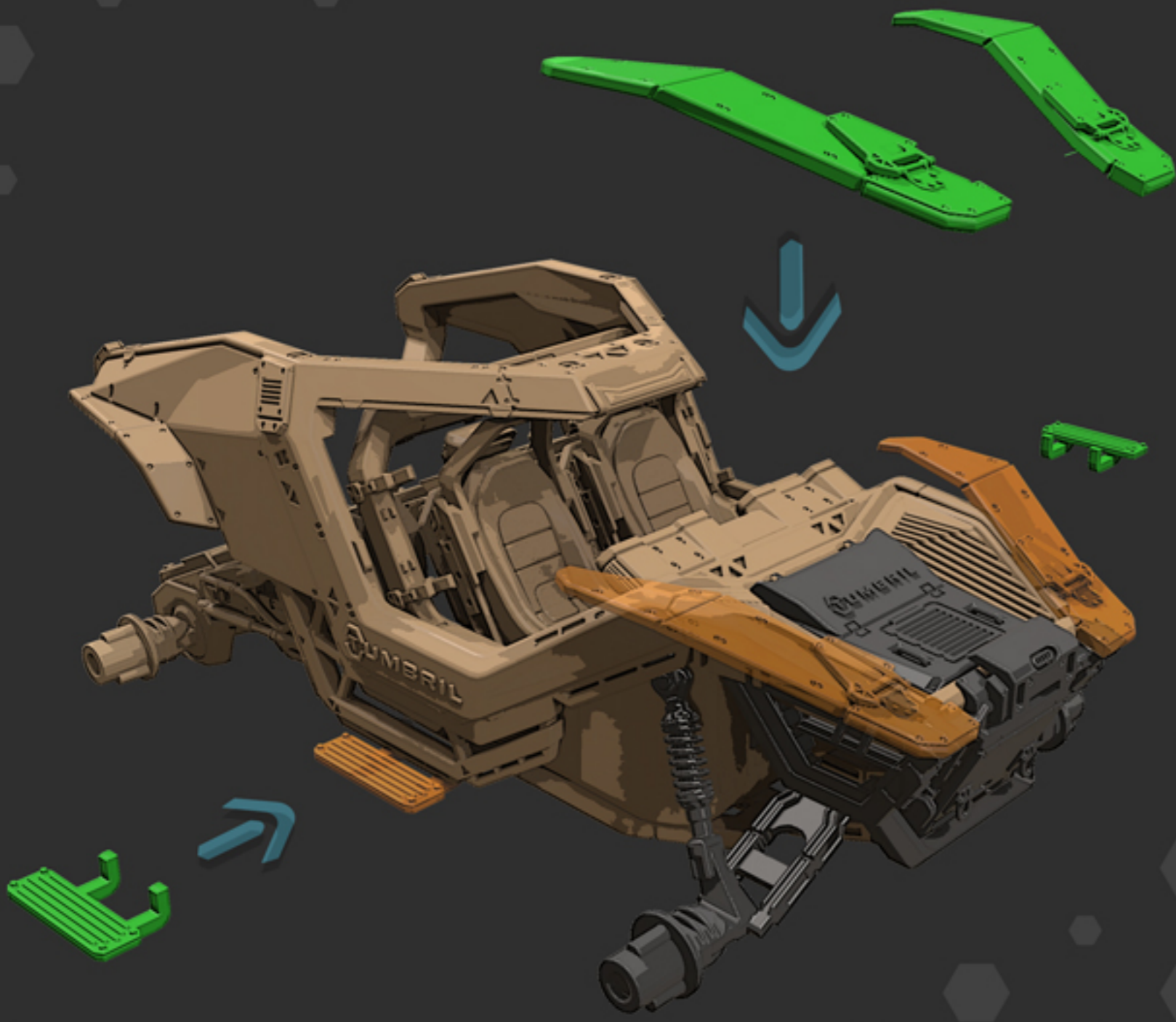






The Cyclone made its commercial debut to the Citizens of Stanton in 2947





2x →  
2x ←



Tumbriel released a special, limited run of the Cyclone called the Dust Devil



The Cyclone is a light-armoured ground vehicle developed by **TumbriL Land Systems**. It can be adapted for multiple roles and forms the backbone of many ground operations that require harsh terrain to be traversed.

TumbriL Land Systems is a terrestrial vehicle manufacturer that reformed in 2941 after first closing in 2862. Originally founded on Yar (Centauri II) in 2536, its first product was the DX20, a wheeled vehicle designed by founders **Kavya Crosby** and **Aaron Douze**.

Due to the DX20's success, TumbriL became a military contractor during the First Tevarin War (2541-2546) where it became a fixture of the military. After the fall of the Messers in 2792, its military contracts were drastically reduced.

The company declared bankruptcy in 2862. In 2941, DevCo Group purchased the TumbriL name and resurrected the brand and its designs, updating them for the 30th century.

For those who like to push the limits of speed, the **Cyclone RC** features a modified intake system to allow for controlled bursts of speed as well as tools to customize handling.



Dual operator terminals for ultimate control



Permanent four wheel drive, combined with segmented plate X-TEC tyres for unparalleled traction



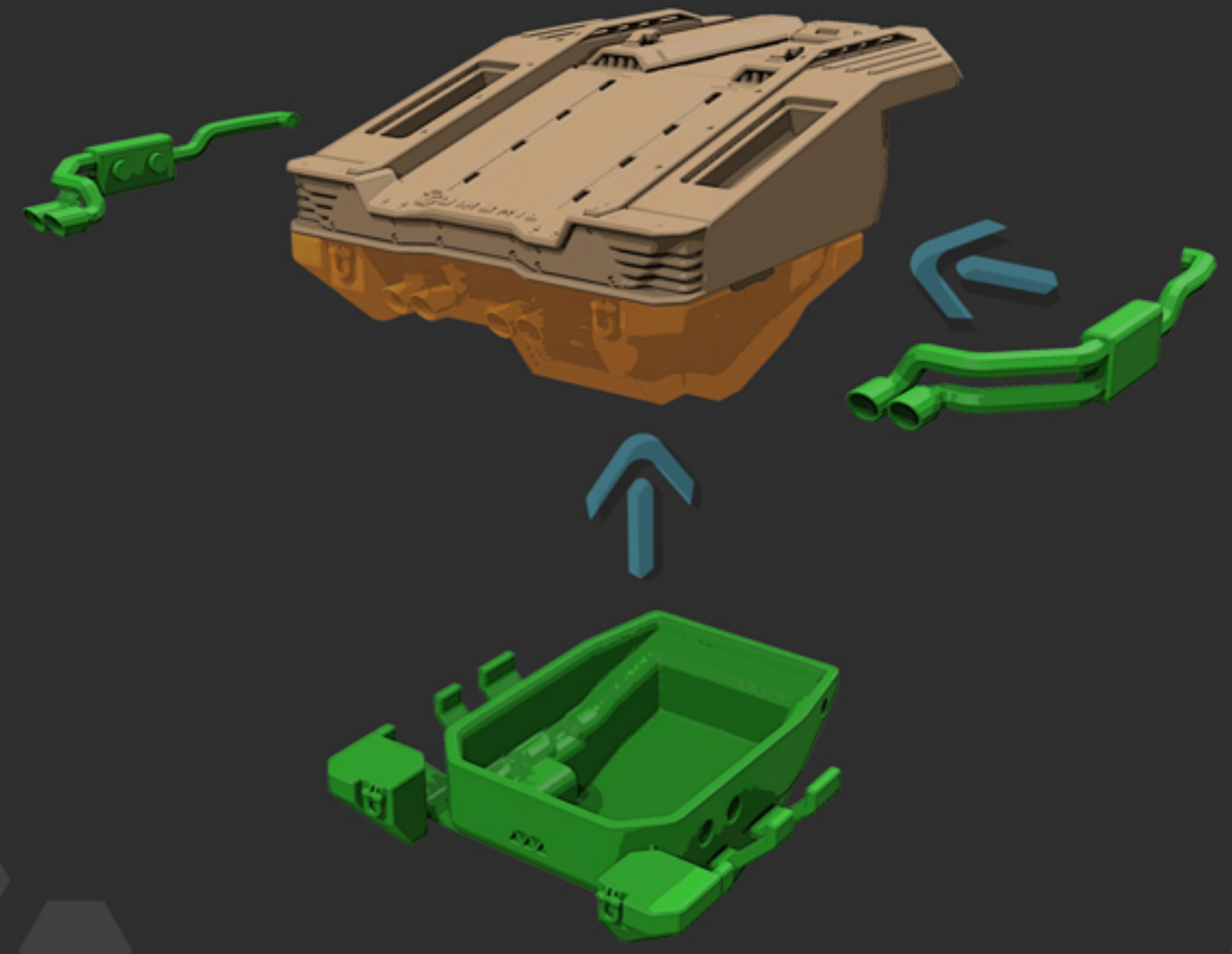
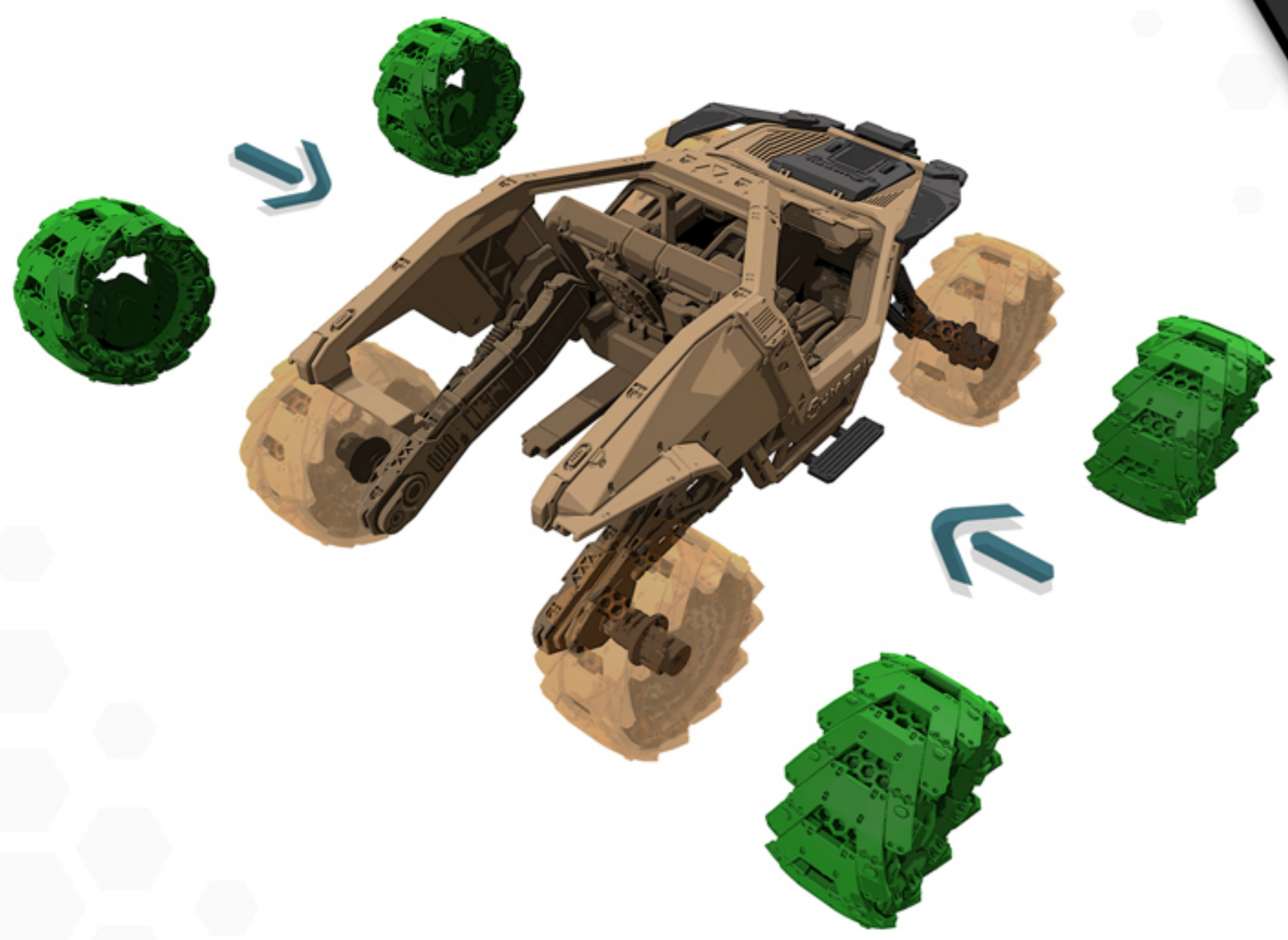
Modified intake system for controlled bursts of speed



**TOUGH. FAST. DURABLE**

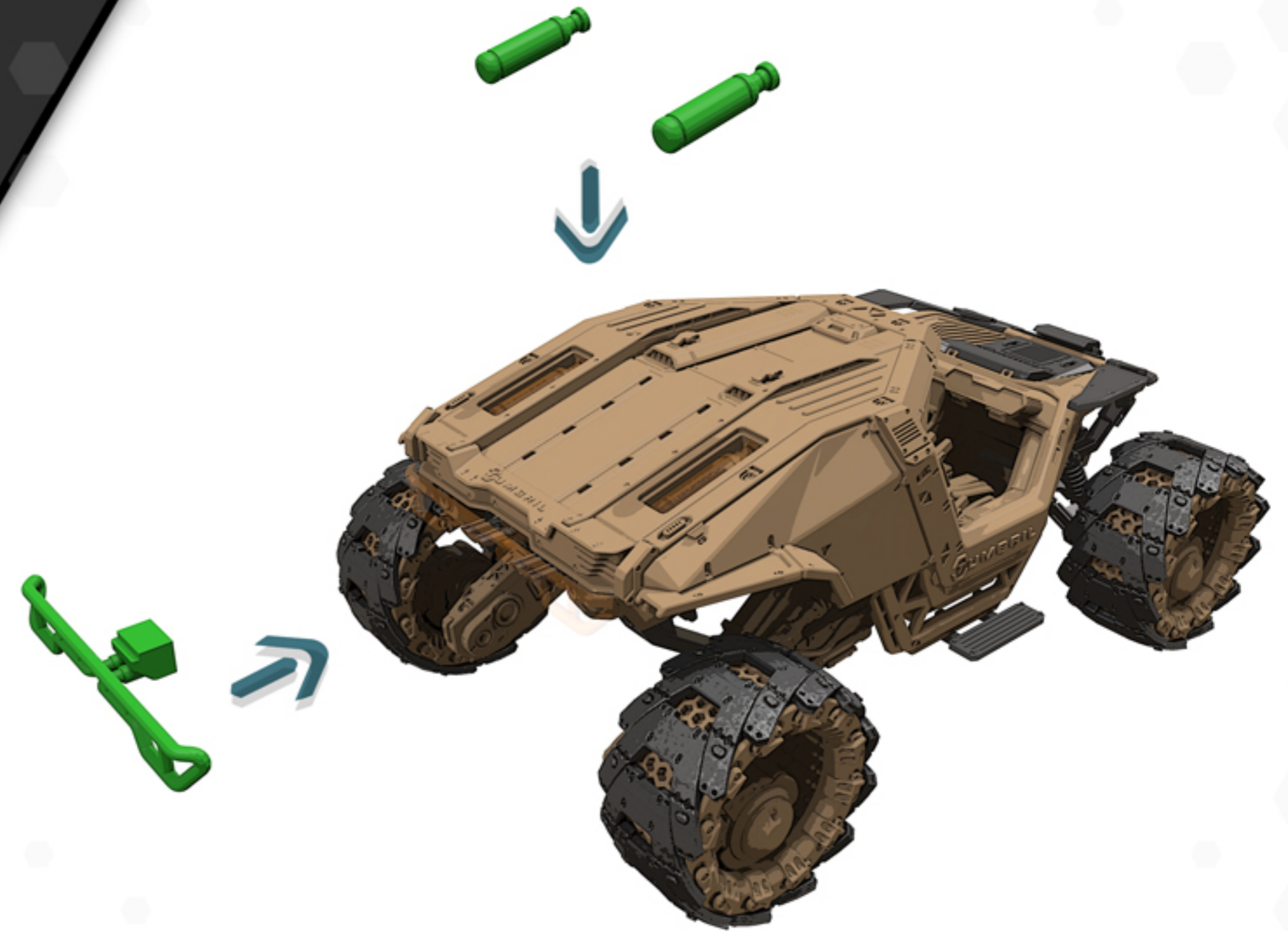
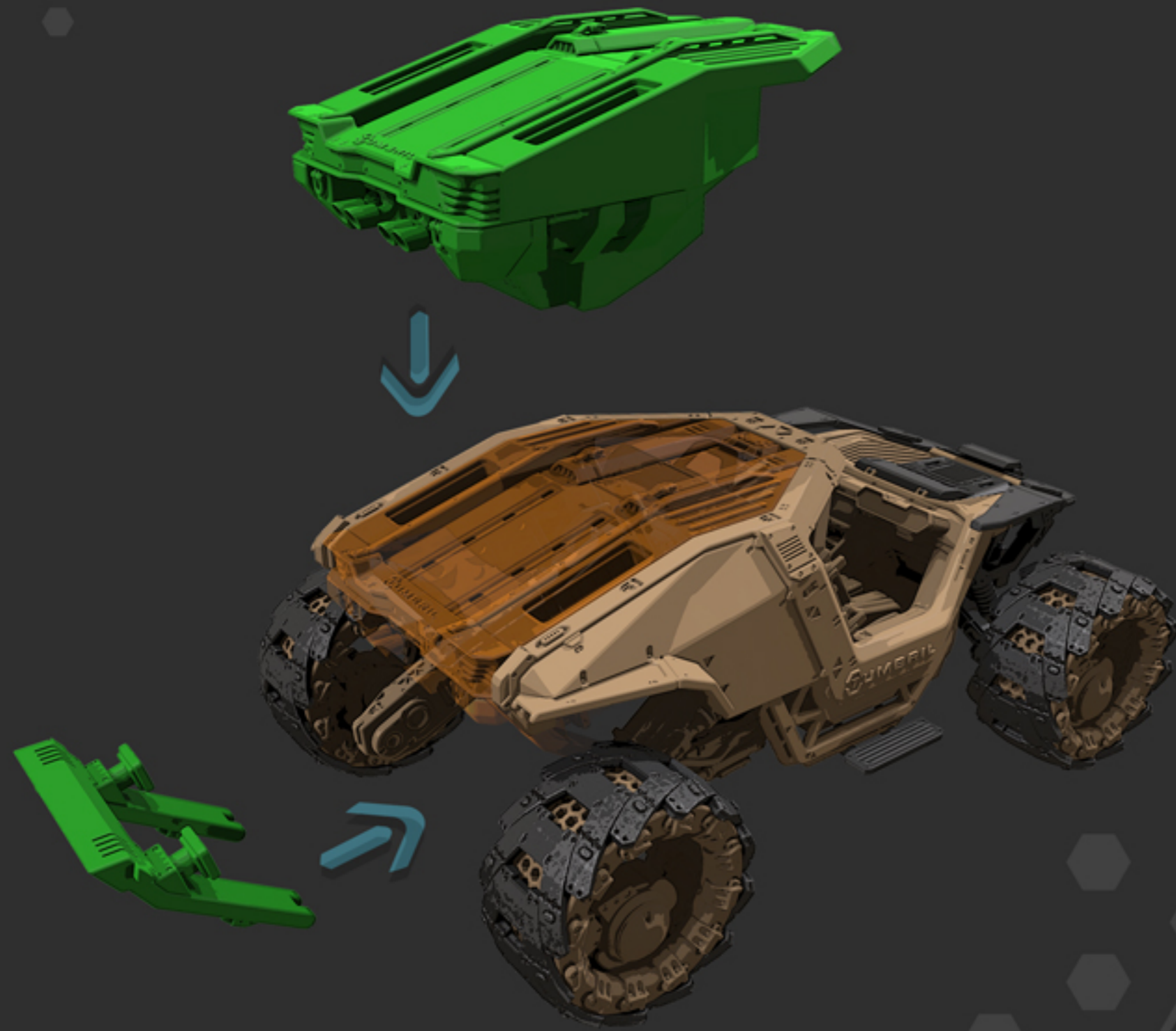




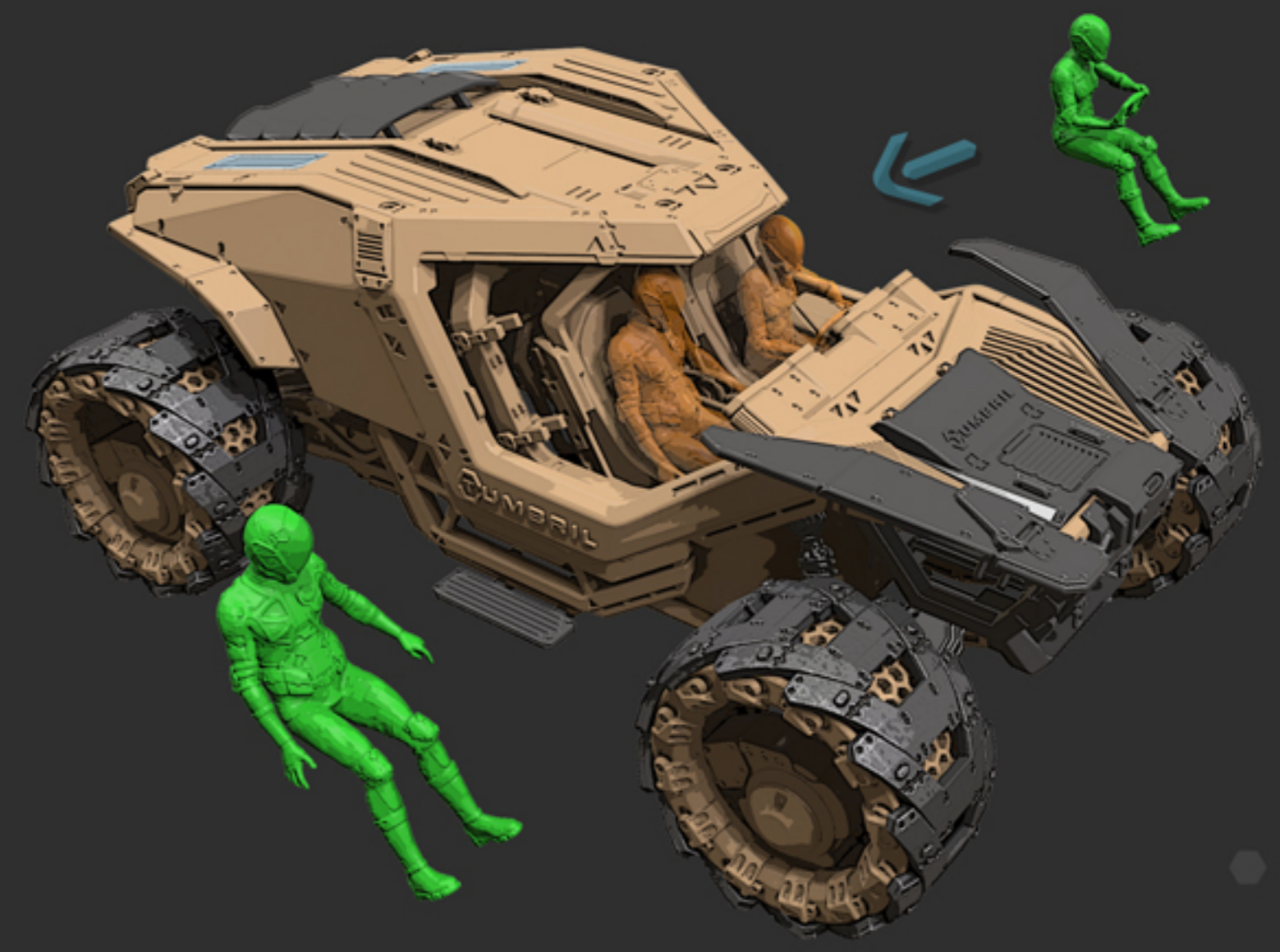
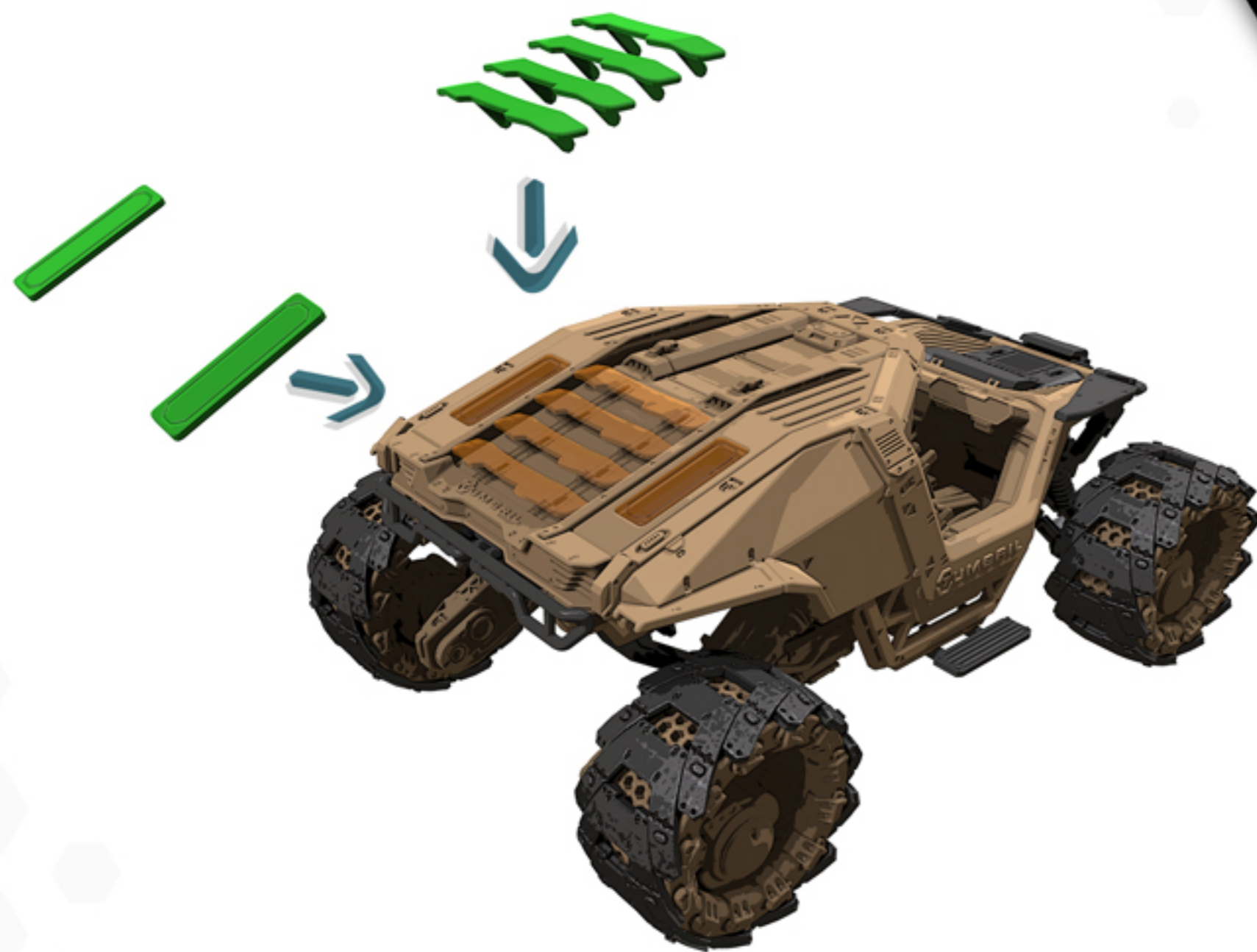


In order to operate a Cyclone, Citizens require a Class-G license or above



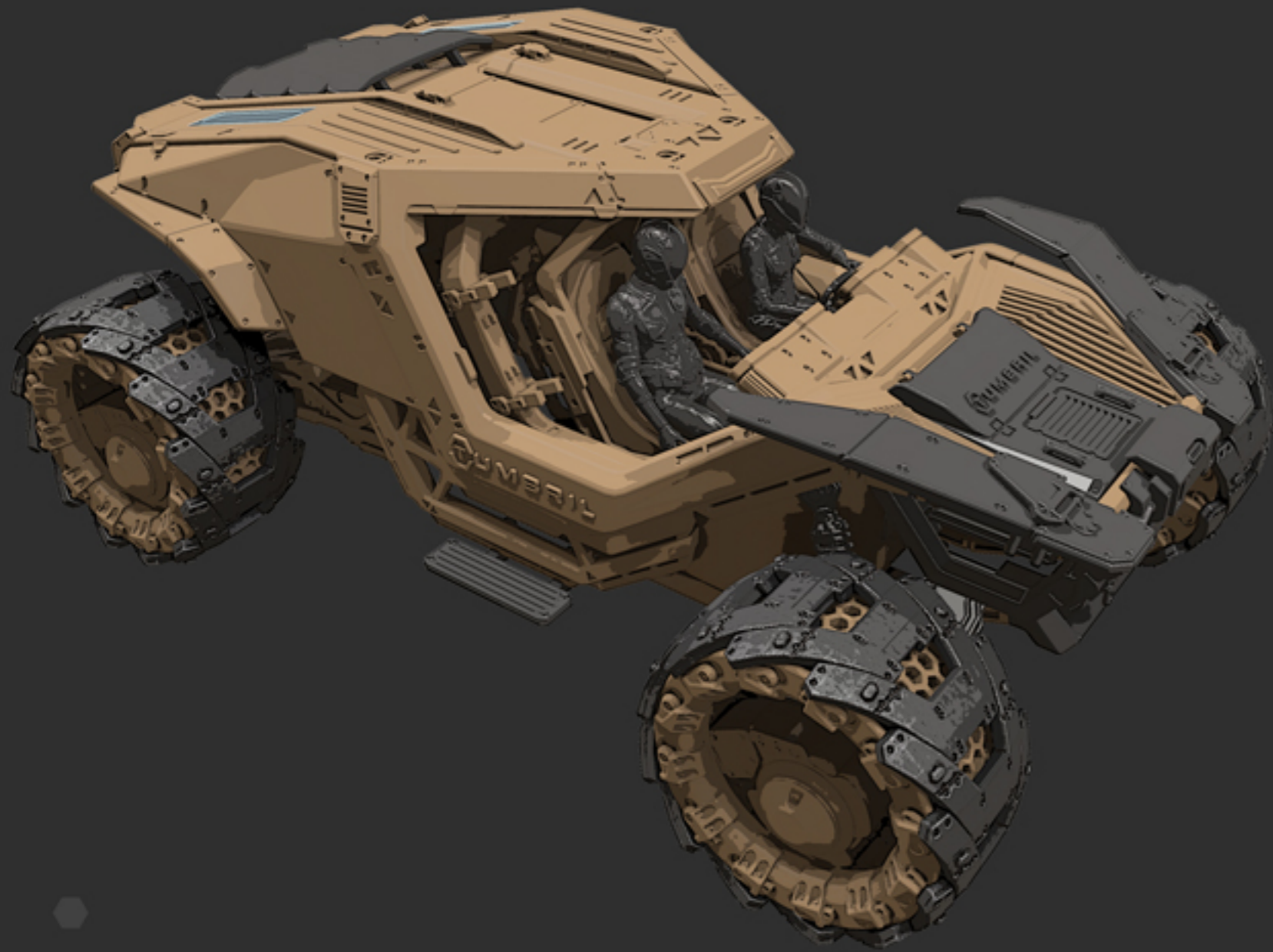






The Cyclone RC features a modified intake system for controlled bursts of speed





Whitley's Guide first put the RC to the test in 2947 on Terra at the vast Quasi Plains







# CREDITS

## **Kals Wilde**

Geek Herder aka Project Manager  
Product Photographer  
Licensing Liason

## **John Raine**

Model Designer  
Chief Maker  
R&D Director

## **James “Th3St0rmTr00p3r” Bressler**

Model Extraction Wizard  
Chief Character Artist

## **Hasgaha**

Game Photographer

## **Darjan “Darjanator” Platinovšek**

Pixel Wrangler: Cover Art, Instructions

## **Jerry “Myre” OB**

Chief Wordifier

Special thanks go to **Paul Jones** and **Gavin Rothery** from **CIG**  
who brought us the concept and original ingame Cyclone RC



**MADE IN  
BRITAIN** 

**JRFABRICATION.CO.UK**

**CONTENT USED WITH PERMISSION OF CLOUD IMPERIUM RIGHTS LLC AND CLOUD IMPERIUM RIGHTS LTD.**

**STAR CITIZEN® IS A REGISTERED TRADEMARK OF CLOUD IMPERIUM RIGHTS LLC.**