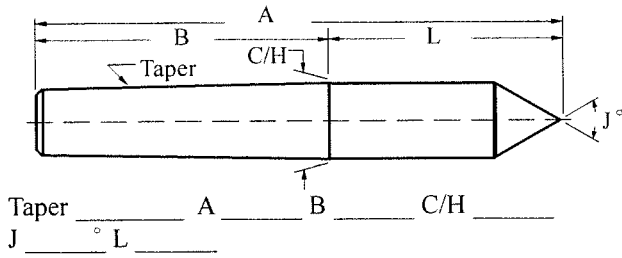


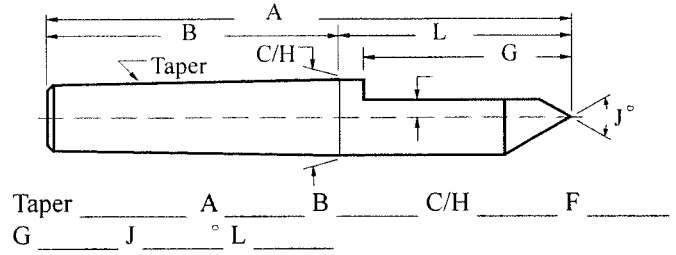
Special Solid Centers

Fill in Dimensions and PDF us a copy at Sales@readytool.com for Quotation

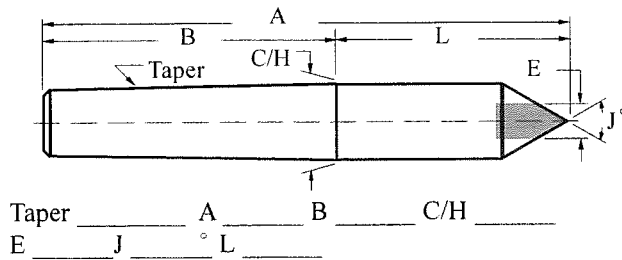
FULL SOLID CENTER - Style -1



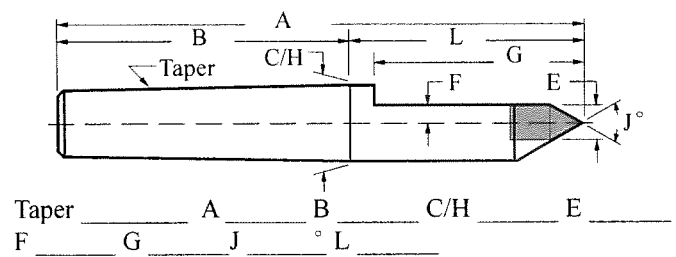
HALF SOLID CENTER - Style -2



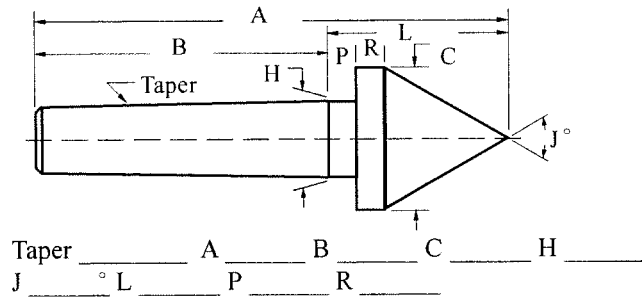
CARBIDE TIP FULL SOLID CENTER - Style -3



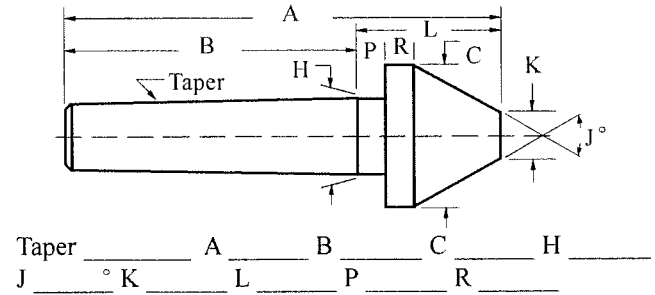
CARBIDE TIP HALF SOLID CENTER - Style -4



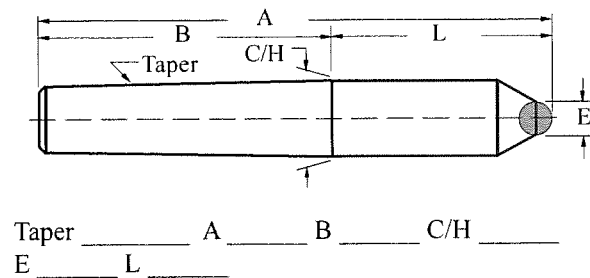
PIPE SOLID CENTER



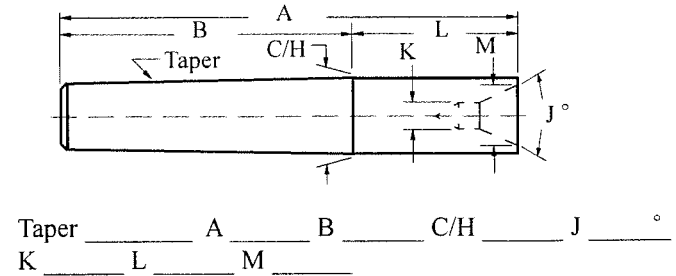
BULL SOLID CENTER



CARBIDE TIP BALL SOLID CENTER



FEMALE SOLID CENTER



Solid & Live Center Key

- | | | |
|--|---|-------------------------------|
| A - Over All Length | G - Cutout Length (Half Center) | N - Point Length |
| B - Taper Length | H - Gage Line Diameter | P - Gage Line to Back of Head |
| C - Point Diameter | J - Point Angle (Included) | R - Flat Length |
| C2 - 2nd Point Dia. (Tracer Point) | J2 - 2nd Point Angle (Tracer Point, Included) | S - Head Diameter |
| D - Back End Diameter | K - Minimum Dia. (Female & Bull Center) | T - Head Length |
| E - Carbide Diameter | L - Gage Line to Point Length | V - Length to Keyway (center) |
| F - Height Above Center Line (Half Center) | M - Major Diameter (Female) | |