

LEVONA

SCENTING

INSTRUCTION MANUAL

Attached; Warranty Card

Please carefully store the instructions and warranty card for further reference. Please read all instructions before using the device.

Operations

Power on

Connect with 12V 1A power supply. You will hear a "beep" sound when the machine turns on.

Power off

Press  to turn the machine off

Intensity setting

The machine has 10 intensity levels. Press  to increase the intensity, press  to decrease the intensity.

Power indicator

•  indicates the direction of the power supply.

Reset Bluetooth App password

press and hold @ for 3 seconds to reset password to 8888.

Intensity and oil consumption

Grade	working(s)	stop(s)	Consume(ml/h)
G1	5s	240s	0.03
G2	10s	220s	0.05
G3	15s	200s	0.07
G4	15s	180s	0.11
G5	20s	160s	0.15
G6	20s	120s	0.20
G7	25s	100s	0.25
G8	25s	80s	0.30
G9	25s	60s	0.38
G10	Customized	Customized	

Instructions

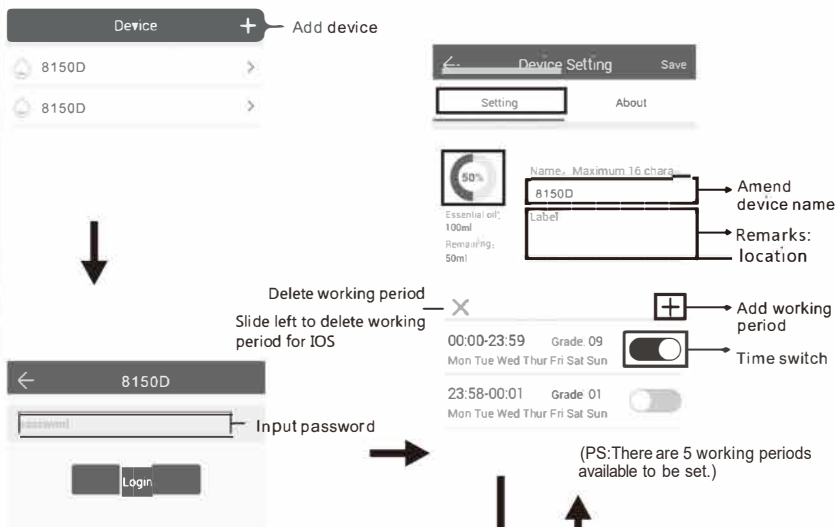
Where to get the app:

Search for "Scent Marketing" on the App store or Google play



Note:

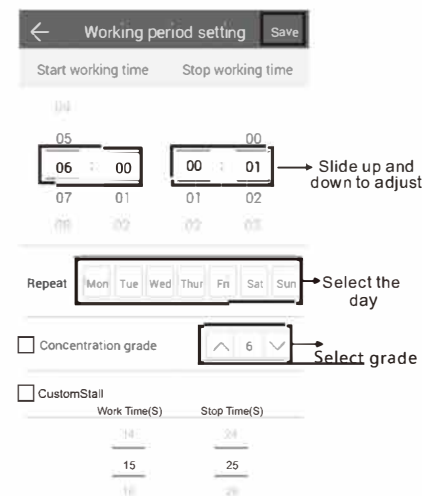
Please make sure that your device Bluetooth is turned "on".



Change Password



If you forget your password, press the reset button to restore the factory settings. The factory settings password is 8888.



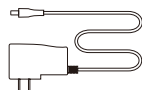
SPECIFICATION



Model	Acasa 1000
Size	112*112*293mm
N.W.	1.2 kg
Voltage	DC12V
Power	5W
Coverage	1000 Sqft
Bottle	120ml
Material	aluminum



Bottle



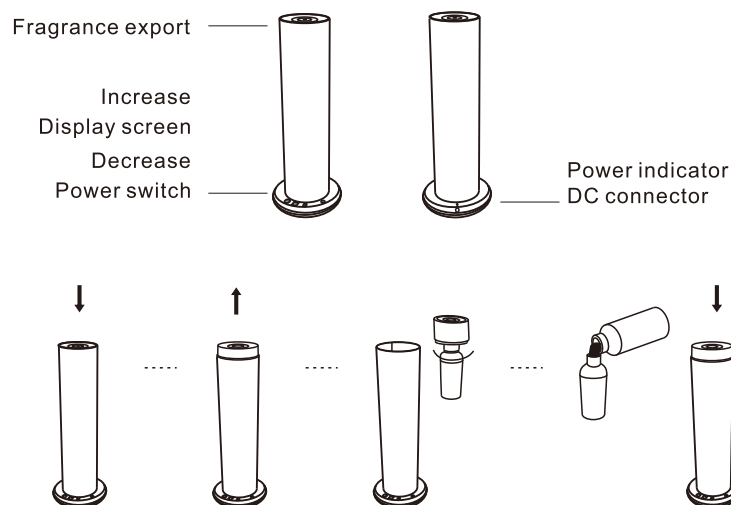
Power adapter



Manual

W[] } Á^&ãä * Á[~ ! Á[| ä & ãä[~ à ^ & @ & Á Ö Á[~ Á Ö ^ Á^&ãä ^ ä Ä[| ä • Ä Ö Á[~ Á ^ & ~ } c[| Ä ^ Á • ^ • Ä[^ æ ^ &[} c ä Ö Á • Ä Ä @ Ä æ Ä

Installation

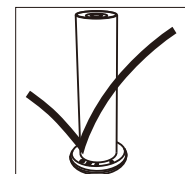


1. Press on the top cover to open the machine.
2. Take out the top cover with diffusion head and bottle.
3. Unscrew the bottle.
4. Fill the bottle with fragrance.

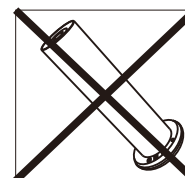


Warning

After installation, keep the diffuser vertical at all times. Tilting or lying device down will cause the oil to overflow, and may break the diffuser.



**Do not modify or disassemble or repair the machine.
If any issues happen to the machine, please contact
our technical support team at
Help@levonascent.com**



EQUIPMENT CLEANING

The machine needs to be cleaned if the below situations occur:

FEYouÁ æ òÁ &@ * ^Á@ Á••^} cãÁ ãÁ &^} c
GÈThe atomization volume goes , ^ak.

Cleaning Steps:

[illegible]

Troubleshooting

Before asking to have the machine repaired please try to diagnose the problem first following to below instructions.

Problem	Solution
No diffusion	<ul style="list-style-type: none"> - Check if the power is ON or OFF. - The pump is damaged and needs replacing. - If there is no diffusion or it is weak, replace the oil with rubbing alcohol and run it through the machine for 5 minutes.
Little or no spray coming out	<ul style="list-style-type: none"> - Atomization head is blocked. Clean diffuser by running rubbing alcohol through it. Or replace diffuser core. - Diffuser core with straw is missing or damaged. Replace with a new one. - Pump is damaged and may need replacing.
Diffuser spraying liquid	<ul style="list-style-type: none"> - Diffuser core is damaged. Replace diffuser core. - Machine is tilted or angled. Make sure it's upright at all times.
Oil leaking	<ul style="list-style-type: none"> - Bottle is loose. Screw it in properly and straight. - Seal is broken or missing. Replace the supplied seal that came with the machine.
Abnormal sound	<ul style="list-style-type: none"> - Pump is loose or damaged. Tighten the pump or replace.
No display on screen	<ul style="list-style-type: none"> - Make sure the power is ON. - Check the plug for damage. Try another outlet. If plug is damaged replace. - Display screen is damaged. Replace.



LEVONA

SCENTING