

# LEVONA

SCENTING

## INSTRUCTION MANUAL

Attached; Warranty Card

Please carefully store the instructions and warranty card for further reference. Please read all instructions before using the device.

### 1 APP instructions

#### Where to get the app:

Search for "Scent Marketing" on the App store or Google Play



#### Note:

Please make sure that Bluetooth is turned "on" on your mobile device.

**Consumption:**  
The consumption value is calculated based on one hour of continuous diffusion of Levona Scent oil. Consumption rate may vary for oils from different brands.

**Aroma oil:** The amount of essential oil added to bottle.

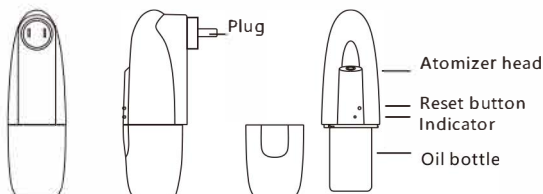
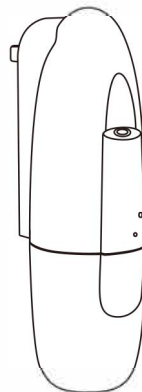
**Remaining:** T This refers to how long the aroma oil will last based on consumption, aroma oil, grade, and working periods.

**Calibrate:** Is used for calibrating consumption. It is advised to calibrate after diffusing for at least 10 days. Please measure the remaining oil in bottle first, then tap "calibrate" in the APP, input the amount of remaining oil, and confirm. Consumption, remaining day, and percentage will be updated.

Turn ON/OFF the device  
Turn ON/OFF the fan

### 2 Specification

[ Model ]	Abela 100
[ Size ]	122*65*214mm
[ Bottle ]	100ml
[ Input ]	DC5V = 0.3A MAX
[ Power ]	2W
[ Coverage ]	100 Sqft
[ N.W. ]	0.3kg
[ Material ]	Plastic



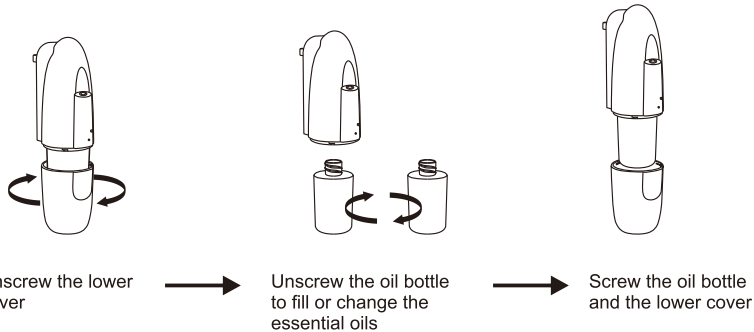
### 3 Set password

**Change password:** The new password and Confirm password fields are shown. A 'Change password' button is at the bottom.

**Working period setting:** Start and stop working times are set using a 24-hour digital clock. Days of the week are selected in the 'Repeat' section. 'Concentration grade' is set to 7, and 'Custom Stall' is checked. Work and Stop times are listed at the bottom.

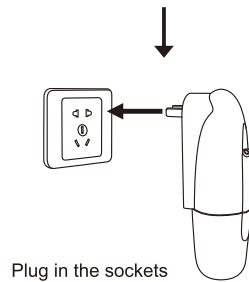
If you forgot your password, please press the reset button to restore to factory settings. The factory settings password is 8888.

## 4 Installation method



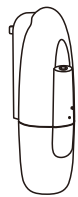
Freshens up any space.

- Bedroom
- Bathroom
- Commercial Areas
- Conference Rooms
- Home
- Office
- Public Areas
- Spa



## 7 Operating instructions

APP: Control using the APP



Indicator light  
When the light is on, it indicates that the machine is on and working.

Reset:

- Short press to reset. The default password is "8888"
- Long press, until you hear a sound to restore to the factory settings.

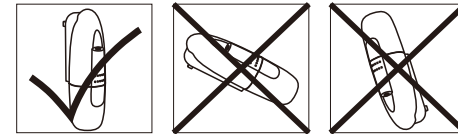
## 9 Concentration and consumption

Grade	G1	G2	G3	G4	Customized
Working time(s)	15s	15s	15s	15s	3-15s
Pausing time(s)	285s	135s	85s	60s	60-900S
Consumption(ml/hr)	0.07	0.15	0.23	0.30	—

Notes: 1. The working time, as shown above, for each grade is 15s.  
2. Different grades and oils may have different consumptions.

## 5 ⚠ Warning

1. Please keep the machine vertical. If tilted or laid flat it may cause the oil to overflow. As well as the efficiency of the machine may be affected, or broken.
2. Do not modify, disassemble or repair the machine. If any issues happen to the machine, please contact our technical support team at [Help@levonascent.com](mailto:Help@levonascent.com)



## 6 Equipment cleaning

The machine needs to be cleaned when either of the below situations occur:

1. You want to change or replace the oil.
2. The atomization volume goes weak

Cleaning steps:

1. Unscrew the lower cover, and remove the oil bottle.
2. Fill up a large container with alcohol. Soak the bottle in the alcohol for 5-10 minutes.
3. Rinse the bottle with water.
4. Air dry the bottle.

## 8 Troubleshooting

Before having the machine repaired, please try to diagnose the problem first with the bellow instructions.

Symptom	Remedy
Does not diffuse	<ul style="list-style-type: none"> <li>- Check whether the machine is in "working mode". If not, it won't spray. Turn the machine back to "working".</li> <li>- Check whether the air pump is damaged. If yes, replace it with a new one.</li> </ul>
Not diffusing properly	<ul style="list-style-type: none"> <li>- Check whether the gasket is damaged or loose. Please adjust it.</li> <li>- Check whether the machine is plugged in properly. If not, plug it in.</li> </ul>
Oil spill	<ul style="list-style-type: none"> <li>- Check whether the atomizer head is damaged</li> </ul>
Oil overflow	<ul style="list-style-type: none"> <li>- Check whether the oil bottle is loose, if yes, tighten.</li> <li>- Check whether the gasket of the atomizer head is damaged; if yes, please replace it with a new one.</li> <li>- Please keep the machine vertical at all times; Tilted or laid flat will cause the oil to overflow and may damage the diffuser.</li> </ul>

The background of the image is a soft, faded pattern of palm fronds, creating a tropical and natural aesthetic. The fronds are light green and yellow, blending into a pale, almost white background.

LEVONNA

SCENTING