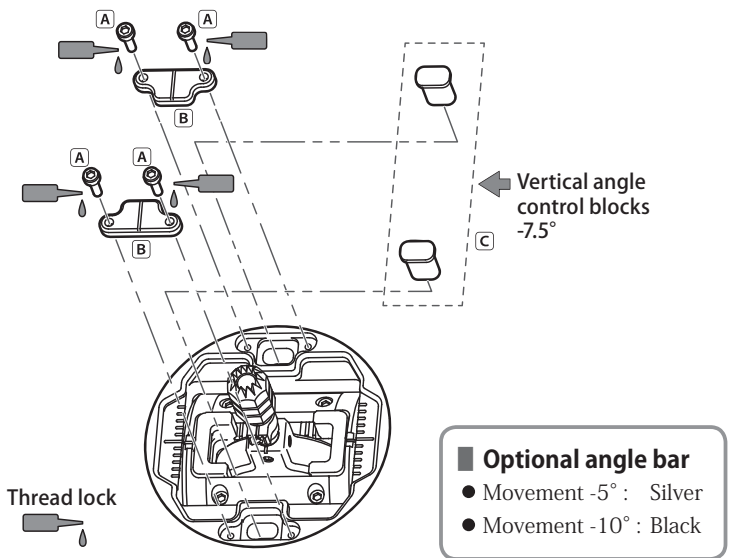
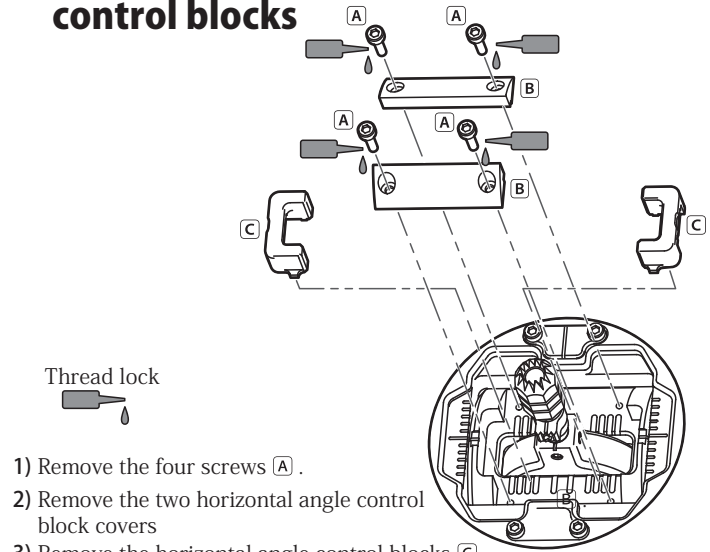


Installing the stick vertical angle control blocks

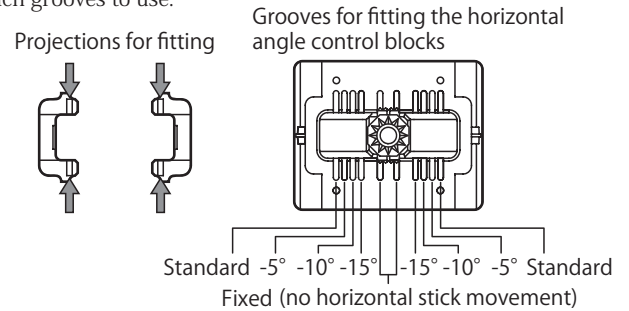


- 1) Remove the four screws (A).
- 2) Remove the two vertical angle control block covers (B).
- 3) Insert your choice of vertical angle control blocks (C).
 three lengths of vertical angle control blocks (C) are available. The blocks reduce the range of the stick movement. Two vertical angle control blocks (gold) of -7.5° are provided as a standard. The other types of angle control blocks are sold as optional items. Please purchase them as required.
- 4) Put the vertical angle control block covers (B) on the blocks and securely tighten the screws (A).
 Applying a small amount of a weak thread lock agent to the screws it prevent them from loosening (eg JR screw Lock soft type - red).
- 5) After replacing the vertical angle control blocks, be sure to carry out stick calibration.
 * When turning on the transmitter a warning may be issued after replacing the blocks. To release the warning status, display the warning screen, select "setting" and increase the number value for the position of the throttle stick.
 * After carrying out stick calibration, be sure to return the warning value to the original setting.

Changing the stick horizontal angle control blocks



- 1) Remove the four screws (A).
- 2) Remove the two horizontal angle control block covers (B).
- 3) Remove the horizontal angle control blocks (C).
- 4) Securely fit the projections of the horizontal angle control blocks (C) into the grooves for the horizontal angle control blocks. The stick movement angle can be adjusted in five levels by selecting which grooves to use.



- 5) Put the horizontal angle control block covers (B) on the blocks and securely tighten the screws (A). Applying a small amount of a thread lock to the screws is recommended to prevent them from loosening (eg JR screw lock soft type - red).
- 6) After changing the position of the horizontal angle control blocks, be sure to carry out stick calibration.

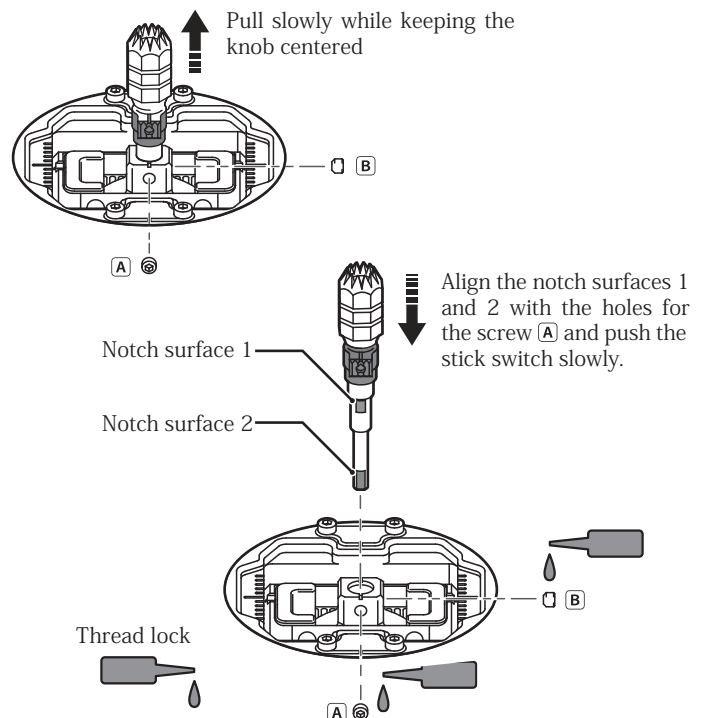
Removing and installing the stick switch

Removing method

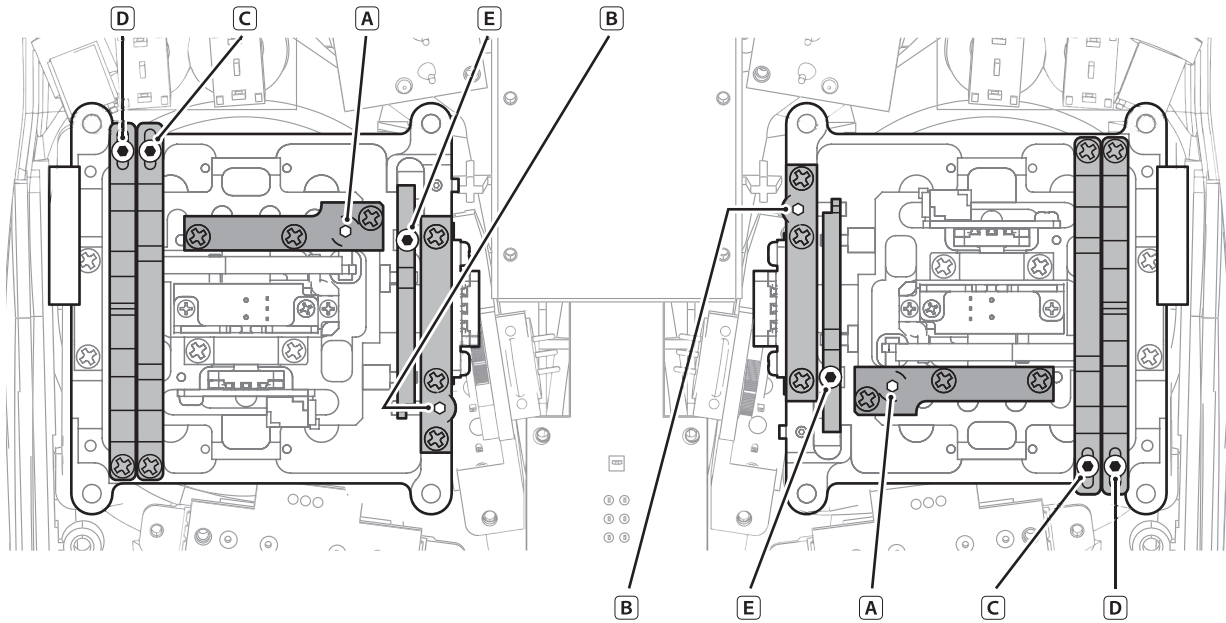
- 1) Place the stick switch knob in the center position as shown below.
- 2) Remove the socket screws (A) and (B).
- 3) Slowly pull out the stick switch while keeping the knob centered.

Installation method

- 1) Insert the stick switch while keeping the notch surface 1 and the notch surface 2 aligned with the hole for the socket screw (A).
 Forcefully pushing the stick switch may cause damage to the equipment. When the stick switch cannot be inserted easily, check the positions of the notches and screw hole and try to insert it again instead of pushing forcefully.
 Confirm that the stick switch is fully inserted.
- 2) Look through the hole of the socket screw (A) to check that the notch surface 1 is in line with the hole.
 Be sure to tighten socket screw (A) first.
 Confirm that the socket screw (A) is tightened, and then tighten the socket screw (B).
 Be careful not to install the socket screws in the wrong order. If doing so, the center position cannot be set securely.
 Applying a small amount of a thread lock to the screws to prevent them from loosening (eg JR screw lock soft type -red).
- 3) Confirm that the stick switch knob moves smoothly. see page 5-10 for information on calibrating the stick switch.



Stick spring tension and travel adjustment



Stick spring tension adjustment

- Remove the batteries before carrying out any adjustments.
- Remove the molded rubber sections from the back of the transmitter.
- Adjust the springs to the desired spring tension. By carefully adjusting each of the screws, you can achieve a range of spring tensions.

Vertical axis spring adjustment:

Turn B counterclockwise. This increases the spring pressure to return the stick to center.

If there is play near center, turn E counterclockwise two or three turns.

Do not turn E too much, otherwise it may fall out. Use the included 1.5mm ball ended hex wrench to make adjustments.

Horizontal axis spring adjustment:

Adjust A to achieve the desired stick tension. Use the included ball ended hex wrench, which will need to be inserted at a slight angle. Turn clockwise for less tension.

- Replace the rubber covers.

See the following section for information on changing the throttle stick feel from smooth clutch to ratchet.

Never touch the printed circuit board or any related parts inside the transmitter.

Touching the board may result in electric shock, uncontrolled microcomputer operation, or damage to model data, and normal operation may become impossible.

Elevator and throttle stick configuration (mode change)

Sometimes when changing transmitter modes, you may find it necessary to swap the functions of the elevator and throttle sticks, which would necessitate changing the friction and spring functions.

Either stick can be configured as either elevator or throttle sticks. Screws B to E are adjusted using the included hex wrench.

How to disable the stick return spring and change to a friction throttle

- 1) Turn B clockwise until it stops.
This reduces the spring pressure on the return to center.
- 2) Turn E clockwise until it stops.
This reduces the spring pressure to zero, disabling it to return to center.
- 3) Turn C clockwise for helicopter throttle or D clockwise for airplane. This increases the pressure on the throttle clutch, as either a smooth feel or ratchet.
- 4) Adjust the pressure to the desired strength, while testing the throttle stick feel.

How to disable throttle operation and enable the stick return spring

- 1) Reduce the pressure of the throttle clutch to zero.
Turn C counterclockwise for helicopter throttle or D counterclockwise for airplane. This reduces the pressure of the throttle clutch. When the throttle becomes free and moves with no load, stop adjusting the screw C or D.
Do not loosen the screw too much, otherwise it may fall out.
- 2) Turn E counterclockwise ten times.
Do not turn E too much, otherwise it may fall out.
At this point, do not turn the screw more than ten turns.
- 3) Turn B counterclockwise.
- 4) This increases the spring pressure to return the stick to center.

Adjust the tension as desired.

If there is play near center, turn E counterclockwise two or three turns. "Mode Change" shall be carried out under the "SYSTEM LIST" of "STICK MODE"

Caution

Do not disassemble the transmitter. Disassembly may result in electric shock, microcomputer error or data corruption, disabling normal operation or control.