

DP-CALC™ MICROMANOMETERS MODELS 5815 AND 5825



The DP-Calc 5815 and 5825 micromanometers allow you to easily make HVAC pressure measurements. These robust instruments can be used with Pitot probes to measure duct velocity. The DP-Calc 5815 is a simple to operate, hand held digital micromanometer for fast, accurate differential and static pressure measurements. The high performance DP-Calc 5825 can calculate flow and has data logging capabilities.

Applications

- + HVAC commissioning and troubleshooting
- + Testing and balancing
- + Pitot tube duct traverses
- + Static pressure measurements
- + Pressure drop across filters, coils, fans, and diffusers
- + Environmental air flow testing

Features and Benefits

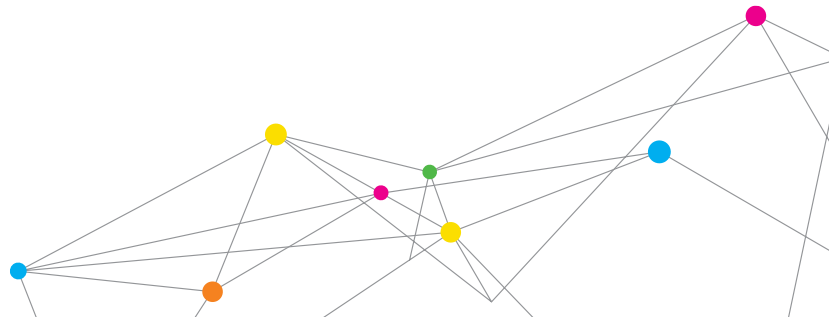
- + Measure differential and static pressure from -15 to +15 in. H₂O (-3735 to +3735 Pa)
- + Calculate and display velocity when using a Pitot tube

Added Features Model 5825

- + Calculates flow
- + Variable time constant
- + Statistics
- + Data logging with time and date stamp
- + Stores 12,700+ samples and 100 test IDs
- + Includes LogDat2™ downloading software
- + Programmable K factors



UNDERSTANDING, ACCELERATED



SPECIFICATIONS

DP-CALC™ MICROMANOMETERS MODELS 5815 AND 5825

Static/Differential Pressure

Range ¹	-15 to +15 in. H ₂ O (-28.0 to +28.0 mm Hg, -3735 to +3735 Pa)
Accuracy	±1% of reading ±0.005 in. H ₂ O (±0.01 mm Hg, ±1 Pa)
Resolution	0.001 in. H ₂ O (0.1 Pa, 0.01 mm Hg)

Velocity (Pitot Tube)

Range ²	250 to 15,500 ft/min (1.27 to 78.7 m/s)
Accuracy ³	±1.5% at 2,000 ft/min (10.16 m/s)
Resolution	1 ft/min (0.1 m/s)

Duct Size (5825)

1 to 500 inches in increments of 0.1 in.
(2.5 to 1270 cm in increments of 0.1 cm)

Volumetric Flow Rate (5825)

Range Actual range is a function of velocity,
pressure, duct size, and K factor

Instrument Temperature Range

Operating	40 to 113°F (5 to 45°C)
Storage	-4 to 140°F (-20 to 60°C)

Data Storage Capabilities (5825)

Range 12,700+ samples and 100 test IDs

Logging Interval (5825)

1 second to 1 hour

Time Constant (5825)

User selectable

External Meter Dimensions

3.3 in. x 7.0 in. x 1.8 in. (8.4 cm x 17.8 cm x 4.4 cm)

Meter Weight with Batteries

0.6 lbs. (0.27 kg)

Power Requirements

Four AA-size batteries (5815)

Four AA-size batteries or optional AC adapter (5825)

	5815	5825
Differential and static pressure	+	+
Velocity with pitot tube	+	+
Sample statistics		+
Volumetric flow rate		+
Actual and standard velocity		+
Variable time constant		+
LogDat2 downloading software		+
K factor		+
Certificate of Calibration	+	+

¹Overpressure range = 190 in. H₂O (7 psi, 360 mmHg, 48 kPa).

²Pressure velocity measurements are not recommended below 1,000 ft/min (5 m/s).

³Accuracy is a function of converting pressure to velocity. Conversion accuracy improves when actual pressure values increase.

Specifications are subject to change without notice.

DP-Calc is a trademark, and TSI and the TSI logo are registered trademarks of TSI Incorporated.



UNDERSTANDING, ACCELERATED

TSI Incorporated - Visit our website www.tsi.com for more information.

USA Tel: +1 800 874 2811
UK Tel: +44 149 4 459200
France Tel: +33 4 91 11 87 64
Germany Tel: +49 241 523030

India Tel: +91 80 67877200
China Tel: +86 10 8251 6588
Singapore Tel: +65 6595 6388



Distributed by:

Kenelec Scientific Pty Ltd
 1300 73 22 33
sales@kenelec.com.au
www.kenelec.com.au