

1



2



3

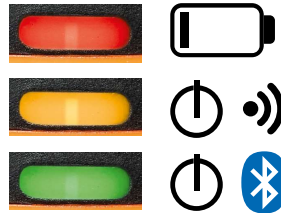


4



5

LED status



Free download testo Smart-App

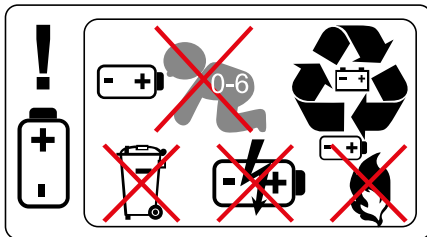


[www.testo.com/en/services/download](http://www.testo.com/en/services/download)

6



7



0560 1915	
0602 1093*	
0602 2093*	
0602 3093*	
0602 4093*	

	3 AAA Alkaline 150 hours	-20°C + 50°C -4°F + 122°F	-20°C + 60°C -4°F + 140°F	-60 to +1000 °C -76 to +1832 °F	±(0,5 °C + 0,3 % of mv.) ±(0,9 °F + 0,3 % of mv.)
				-50 ... +400 °C -58 ... +752 °F	±1,0 °C (-50°C ... 100°C) ±1% of mv (others) ±1,8 °F (-58°C ... 212°F) ±1% of mv (others)
				-50 ... +350 °C -58 ... +662 °F	±(1,0 + 1% of mv) °C ±(1,8 + 1% of mv) °F
				-50 ... +400 °C -58 ... +752 °F	±1,0 °C (-50°C ... 100°C) ±1% of mv (others) ±1,8 °F (-58°C ... 212°F) ±1% of mv (others)
				-50 ... +400 °C -58 ... +752 °F	±1,0 °C (-30°C ... +80°C) ±(0,7 + 1% of mv)(-50 ... -30°C) ±(0,2 + 1% of mv) (+80°C ... 400°C) ±1,8 °F (-22°F ... +186°F) ±(1,3 + 1% of mv)(-58°F ... -22°F) ±(0,4 + 1% of mv)(+186°F ... +752°F)






\* probe + handle

# Approval and Certification

<b>Product</b> 产品名称	testo 915i
<b>Mat.-No.</b> 型号	0560 1915
<b>Date</b> 日期	29.03.2021



The use of the wireless module is subject to the regulations and stipulations of the respective country of use, and the module may only be used in countries for which a country certification has been granted. The user and every owner has the obligation to adhere to these regulations and prerequisites for use, and acknowledges that the re-sale, export, import etc. in particular in countries without wireless permits, is his responsibility.

Country	Comments
<b>Australia</b>	 E 1561
<b>Canada</b>	IC ID: 6127B-05601915 See ISED Warnings
<b>Europa + EFTA</b>	 <p> The EU Declaration of Conformity can be found on the testo homepage <a href="http://www.testo.com">www.testo.com</a> under the product specific downloads.</p> <p><b>EU countries:</b> Belgium (BE), Bulgaria (BG), Denmark (DK), Germany (DE), Estonia (EE), Finland (FI), France (FR), Greece (GR), Ireland (IE), Italy (IT), Latvia (LV), Lithuania (LT), Luxembourg (LU), Malta (MT), Netherlands (NL), Austria (AT), Poland (PL), Portugal (PT), Romania (RO), Sweden (SE), Slovakia (SK), Slovenia (SI), Spain (ES), Czech Republic (CZ), Hungary (HU), United Kingdom (GB), Republic of Cyprus (CY).</p> <p><b>EFTA countries:</b> Iceland, Liechtenstein, Norway, Switzerland</p>  WEEE Reg. no.: DE 75334352
<b>Hongkong</b>	Authorized
<b>Malaysia</b>	Type Approval Code: RGOF/05A/0321/S(21-1025)
<b>Turkey</b>	Authorized
<b>South Africa</b>	TA-2020/8307
<b>USA</b>	 <p>FCC ID: WAF-05601915 See FCC Warnings</p>

	Feature 特征与参数	Values 数值
<b>Bluetooth®-Information</b>	Bluetooth®- Range 范围	up to 150m (490 feet) (free field /无障碍场地)
	radio type 型号	Bluetooth® Low Energy (BLE) 4.2
	company 制造商	LSD Science & Technology Co., Ltd Lierda LSD4BT_S37
	RF Band 射频频段	2402 – 2480MHz
	power output 输出功率	13,70dBm

Bluetooth®-SIG Listing	Feature 特征与参数	Values 数值
	Declaration ID	D043363
	member company	Testo SE & Co. KGaA

## EU SAR Information

The SAR limit of Europe is 2.0 W/kg. The highest SAR value reported for 0560 1915 under testing standard for use in hand is 0.275W/kg.

This device and its antenna(s) must not be co-located or operating in conjunction with any other antenna or transmitter.

## ISED Warnings

### CAN ICES-003(B)/NMB-003(B):

This Class B digital apparatus complies with Canadian ICES-003.

Cet appareil numérique de la classe [B] est conforme à la norme NMB-003 du Canada.

### RSS-Gen & RSS-247 statement:

This device complies with Industry Canada licence-exempt RSS standard(s).

Operation is subject to the following two conditions:

- (1) this device may not cause interference, and
- (2) this device must accept any interference, including interference that may cause undesired operation of the device.

Le présent appareil est conforme aux CNR d'Industrie Canada applicables aux appareils radio exempts de licence.

L'exploitation est autorisée aux deux conditions suivantes :

- (1) l'appareil ne doit pas produire de brouillage, et
- (2) l'utilisateur de l'appareil doit accepter tout brouillage radio-électrique subi, même si le brouillage est susceptible d'en compromettre le fonctionnement.

### ISED SAR warning:

The highest SAR value reported under this standard during product certification for use in the hand is 0.450W/kg.

### Co-Location:

This transmitter must not be co-located or operated in conjunction with any other antenna or transmitter.

### Avertissement DAS d'ISED:

La valeur DAS la plus élevée rapportée durant la prise en main pour utilisation selon la norme standard de certification de produit est de 0,450 W / kg.

### Co-location

Ce transmetteur ne peut pas être installé en colocation ou être utilisé avec une autre antenne ou transmetteur, quel qu'en soit le type.

## FCC Warnings

Information from the FCC (Federal Communications Commission)

### For your own safety

Shielded cables should be used for a composite interface. This is to ensure continued protection against radio frequency interference.

### FCC warning statement

This equipment has been tested and found to comply with the limits for a Class B digital device, pursuant to Part 15 of the FCC Rules. These limits are designed to provide reasonable protection against harmful interference in a residential installation. This equipment generates, uses and can radiate radio frequency energy and, if not installed and used in accordance with the instructions, may cause harmful interference to radio communications. However, there is no guarantee that interference will not occur in a particular installation. If this equipment does cause harmful interference to radio or television reception, which can be determined by turning the equipment off and on, the user is encouraged to try to correct the interference by one or more of the following measures:

- Reorient or relocate the receiving antenna.
- Increase the separation between the equipment and receiver.
- Connect the equipment into an outlet on a circuit different from that to which the receiver is connected.
- Consult the dealer or an experienced radio/TV technician for help.

## Caution

Changes or modifications not expressly approved by the party responsible for compliance could void the user's authority to operate the equipment. Shielded interface cable must be used in order to comply with the emission limits.

## Warning

This device complies with Part 15 of the FCC Rules.

Operation is subject to the following two conditions:

- (1) this device may not cause harmful interference, and
- (2) this device must accept any interference received, including interference that may cause undesired operation.



### FCC SAR warning:

The SAR limit of USA (FCC) is 1.6 W/kg averaged over one gram of tissue. The highest SAR value reported under this standard during product certification of 0560 1915 (FCC ID:WAF-05601915) for use when properly worn in the hand is 0.450 W/kg

### Co-Location:

This transmitter must not be co-located or operated in conjunction with any other antenna or transmitter.

<b>Mat.-No.</b> 型号	0560 1915 08
-----------------------	--------------

Country	Comments						
<b>Japan</b>	Contains Lierda S37 BLE module  R 201-200983 see Japan Information						
<b>South Korea</b>	 R-R-te2-05601915 see KCC Warning						
<b>Bluetooth® Information</b>	<table border="1"> <thead> <tr> <th>Feature 特征与参数</th> <th>Values 数值</th> </tr> </thead> <tbody> <tr> <td>Bluetooth® range / 范围</td> <td>up to 100m (328 feet) (free field /无障碍场地)</td> </tr> <tr> <td>power output 输出功率</td> <td>9.37dBm</td> </tr> </tbody> </table>	Feature 特征与参数	Values 数值	Bluetooth® range / 范围	up to 100m (328 feet) (free field /无障碍场地)	power output 输出功率	9.37dBm
	Feature 特征与参数	Values 数值					
	Bluetooth® range / 范围	up to 100m (328 feet) (free field /无障碍场地)					
power output 输出功率	9.37dBm						

### KCC Warning

해당 무선 설비는 운용 중 전파혼신 가능성이 있음

### Japan Information

当該機器には電波法に基づく、技術基準適合証明等を受けた特定無線設備を装着している。