

SikaTile® Grout Solutions

THE GLOBAL INNOVATOR IN TILE AND STONE INSTALLATION MATERIALS

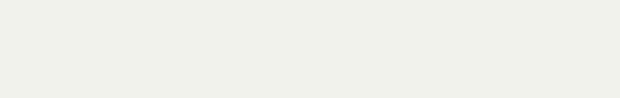
Products Included:

- **800:** SikaTile®-800 Sanded and Unsanded Grout
- **815:** SikaTile®-815 Secure Grout

00010 Bright White: 800/815



00011 Snow White: 800/815/Ultima



00012 Navajo White: 800/815/825/Ultima



00018 Cream: 800/815/Ultima



00021 Canvas: 800/815/825/Ultima



00032 Light Taupe: 800/815



00025 Tumbleweed: 800/815/825/Ultima



00153 Buckskin: 800/815/Ultima



00071 Sandstone: 800/815/Ultima

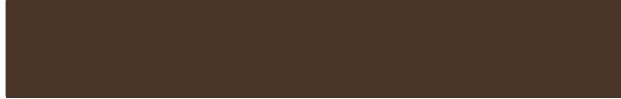


- **825:** SikaTile®-825 Epoxy Grout
- **Ultima:** SikaTile® Ultima Grout

00150 Santa Fe: 800/815/825/Ultima



00175 Dark Chocolate: 800/815/825/Ultima



00191 Terracotta: 800/815/825



00030 Silver: 800/815/825/Ultima



00034 River Rock: 800/815/825/Ultima



00035 Natural Gray: 800/815/825/Ultima



00038 Gray: 800/815/825/Ultima



00162 True Taupe: 800/815/825



00525 Black Sapphire: 800/815/825/Ultima



SikaTile®-800 Sanded Grout and SikaTile®-815 Secure Grout Coverage in sqft. (m ²) per 25 lb. Bag (11.34 kg)*				
Tile Size	Grout Joint Width			
	1/8" (3 mm)	1/4" (6 mm)	3/8" (10 mm)	1/2" (13 mm)
1" x 1" x 1/4" (25 x 25 x 6 mm)	58 (5.4)	34 (3.2)	26 (2.4)	22 (2.0)
2" x 2" x 1/4" (50 x 50 x 6 mm)	106 (9.8)	58 (5.4)	42 (3.9)	34 (3.2)
4" x 4" x 3/8" (100 x 100 x 10 mm)	136 (12.6)	71 (6.6)	49 (4.6)	39 (3.6)
6" x 6" x 3/8" (150 x 150 x 10 mm)	201 (18.7)	103 (9.6)	71 (6.6)	55 (5.1)
12" x 12" x 3/8" (300 x 300 x 10 mm)	395 (36.7)	201 (18.7)	136 (12.6)	103 (9.6)
18" x 18" x 3/8" (150 x 610 x 10 mm)	589 (54.7)	298 (27.7)	201 (18.7)	152 (14.1)
24" x 24" x 3/8" (610 x 610 x 10 mm)	784 (72.8)	395 (36.7)	265 (4.6)	201 (18.7)
6" x 24" x 3/8" (150 x 610 x 10 mm)	318 (29.5)	162 (15.1)	111 (10.3)	85 (7.9)
12" x 24" x 3/8" (300 x 610 x 10 mm)	525 (48.8)	266 (24.7)	179 (16.6)	136 (12.6)

SikaTile®-800 Unsanded Grout : Coverage in sqft. (m ²) per 10 lb. Bag (11.34 kg)*			
Tile Size	Grout Joint Width		
	1/16" (1.5 mm)	3/32" (2.4 mm)	1/8" (3 mm)
1" x 1" x 1/4" (25 x 25 x 6 mm)	42 (3.9)	29 (2.7)	23 (2.1)
2" x 2" x 1/4" (50 x 50 x 6 mm)	81 (7.5)	55 (5.1)	42 (3.9)
4" x 4" x 3/8" (100 x 100 x 10 mm)	105 (9.8)	71 (6.6)	54 (5.0)
6" x 6" x 3/8" (150 x 150 x 10 mm)	156 (14.5)	105 (9.8)	79 (7.3)
12" x 12" x 3/8" (300 x 300 x 10 mm)	310 (28.8)	207 (19.2)	156 (14.5)
18" x 18" x 3/8" (150 x 610 x 10 mm)	464 (43.1)	310 (28.8)	233 (21.6)
24" x 24" x 3/8" (610 x 610 x 10 mm)	618 (57.4)	412 (38.3)	310 (28.8)
6" x 24" x 3/8" (150 x 610 x 10 mm)	249 (23.1)	167 (15.5)	126 (11.7)
12" x 24" x 3/8" (300 x 610 x 10 mm)	413 (38.4)	276 (25.6)	208 (19.3)

SikaTile®-825 Epoxy Grout: Coverage in sqft. (m ²) per 1 gal. (3.79 L)*				
Tile Size	Grout Joint Width			
	1/16" (1.5 mm)	1/8" (3 mm)	1/4" (6 mm)	3/8" (10 mm)
1" x 1" x 1/4" (25 x 25 x 6 mm)	57 (5.2)	31 (2.8)	18 (1.7)	14 (1.3)
2" x 2" x 1/4" (50 x 50 x 6 mm)	108 (10.0)	57 (5.2)	31 (2.8)	22 (2.0)
4" x 4" x 3/8" (100 x 100 x 10 mm)	211 (19.6)	108 (10.0)	57 (5.2)	40 (3.7)
6" x 6" x 3/8" (150 x 150 x 10 mm)	141 (13.1)	72 (6.7)	38 (3.5)	26 (2.4)
12" x 12" x 3/8" (300 x 300 x 10 mm)	278 (25.8)	141 (13.1)	72 (6.7)	49 (4.6)
18" x 18" x 3/8" (150 x 610 x 10 mm)	416 (38.6)	210 (19.5)	107 (9.9)	72 (6.7)
24" x 24" x 3/8" (610 x 610 x 10 mm)	622 (57.8)	313 (29.0)	158 (14.7)	107 (9.9)
6" x 24" x 3/8" (150 x 610 x 10 mm)	334 (31.0)	169 (15.7)	86 (8.0)	59 (5.4)
12" x 24" x 3/8" (300 x 610 x 10 mm)	554 (51.4)	279 (25.9)	141 (13.1)	95 (8.8)

SikaTile® Ultima Grout: Coverage in sqft. (m ²) per 1 gal. (3.79 L)*					
Tile Size	Grout Joint Width				
	1/16" (1.5 mm)	1/8" (3 mm)	1/4" (6 mm)	3/8" (10 mm)	1/2" (12 mm)
2" x 2" x 1/4" (50 x 50 x 6 mm)	103 (9.6)	50 (4.7)	24 (2.2)	15 (1.4)	11 (1.0)
4 1/4" x 4 1/4" x 1/4" (108 x 108 x 6 mm)	221 (20.5)	109 (10.1)	54 (5.0)	35 (3.3)	26 (2.4)
6" x 6" x 1/4" (150 x 150 x 6 mm)	313 (29.1)	155 (14.4)	77 (7.2)	50 (4.7)	37 (3.4)
12" x 12" x 3/8" (300 x 300 x 10 mm)	417 (38.7)	208 (19.3)	103 (9.6)	68 (6.3)	50 (4.7)
6" x 24" x 3/8" (150 x 610 x 10 mm)	334 (31.0)	166 (15.4)	82 (7.6)	54 (5.0)	40 (3.7)
12" x 24" x 3/8" (300 x 610 x 10 mm)	557 (51.7)	278 (25.8)	138 (12.8)	91 (8.5)	68 (6.3)

SikaTile® Grout Solutions Range



SikaTile®-800 Sanded Grout

Premium, Polymer-Modified Portland Cement Sanded Grout

- Polymer modified for hard, durable, professional results
- Stain resistant and color consistent
- For 1/8" (3 mm) to 1/2" (13 mm) grout joints
- Easy mixing – just add water; no additives required
- Exceeds ANSI A118.6
- **Size:** 25-lb. bags
- **Colors:** 18 (See color chart)



SikaTile®-800 Unsanded Grout

Premium, Polymer-Modified Portland Cement Unsanded Grout

- Polymer modified for hard, durable, professional results
- Stain resistant and color consistent
- For 1/16" (1.5 mm) to 1/8" (3 mm) grout joints
- Easy mixing – just add water; no additives required
- Exceeds ANSI A118.6
- **Size:** 10-lb. boxes
- **Colors:** 18 (See color chart)



SikaTile®-815 Secure Grout

High-Performance, Rapid-Setting, Polymer-Modified Grout

- Polymer-modified for hard, durable, high-performing results
- Stain resistant, color consistent and efflorescence free
- For 1/16" (1.5 mm) to 1/2" (13 mm) grout joints
- Easy mixing – just add water; no additives required
- Exceeds ANSI A118.7
- **Size:** 25-lb. bags
- **Colors:** 18 (See color chart)

SikaTile®-825 Epoxy Grout

Premium, 100%-Solids Epoxy Mortar and Grout

- Used for setting and grouting ceramic and quarry tile, pavers, mosaics
- Fill joint widths 1/8" to 3/8" (3.2 mm to 10 mm)
- Excellent setting material for moisture sensitive and resin backed stones
- High-strength mortar that is stain resistant, impermeable and shock resistant
- Exceeds ANSI A118.3
- **Size:** 2-gal. kit
- **Colors:** 12 (See color chart)

SikaTile® Ultima Grout

Professional-Grade Ready-to-use Grout

- Superior-performing ready-to-use grout
- No mixing; easy to spread and clean
- Color consistent with no efflorescence
- Virtually stainproof; no sealing required
- For grout joints from 1/16" to 1/2" (1.5 mm to 12 mm)
- **Size:** 1-gal. pail
- **Colors:** 14 (See color chart)

Also available in all 18 colors are Sikasil® N Plus 100%-Silicone Caulk, SikaTile® Sanded and Unsanded Acrylic Caulk and Grout Revive.



SikaTile® Grout Solutions

THE GLOBAL INNOVATOR

IN TILE AND STONE

INSTALLATION MATERIALS

Sika offers several types of grouts, from traditional Portland cement products to 100%-solids epoxy. Complete with a vast array of today's colors and innovations such as Dustless Technology, the grout family has emerged as one of the industry's full line solutions for any type of grouting job.

Find our SikaTile®
Grout Coverage Calculator
at SikaTile.com

Coverages are approximate and may be reduced based on project conditions, actual tile size, waste and other factors. Color swatches are a representation of manufactured colors; shade may vary under job site conditions, cleanup and tile type. Product specifications are subject to change.

10.2022/08.2794.5

18 COLORS

Sika Corporation
201 Polito Ave
Lyndhurst NJ 07071
SikaTile.com

BUILDING TRUST



BUILDING TRUST

