

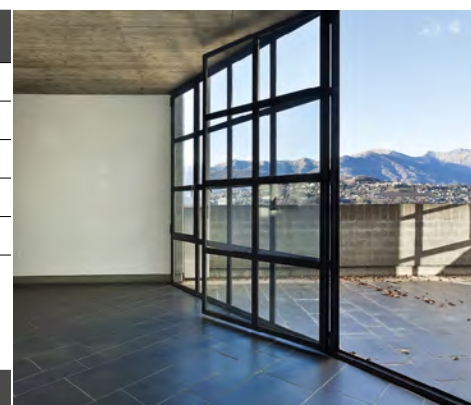
Performance High-tech



PRODESΟ		
Aspect	Polymeric composed cloth	
Total thickness	≈ 1/8"	EN 1849 - 2
Width	≈ 3'3" Ft	
Total weight	≈ 1.87 oz / SqFt	
Loading of longitudinal break	≈ 490 N / 2"	EN 12311-1
Loading of transverse break	≈ 370 N / 2"	EN 12311-1
Elongation for longitudinal break	≈ 60 %	EN 12311-1
Elongation for transverse break	≈ 64 %	EN 12311-1
Crack – Bridgin Ability (sealed system)	≥ 1/32"	
Air volume inside the canals	≈ 0.03 GAL / SqFt	
Working temperature	- 40°F / + 176°F	

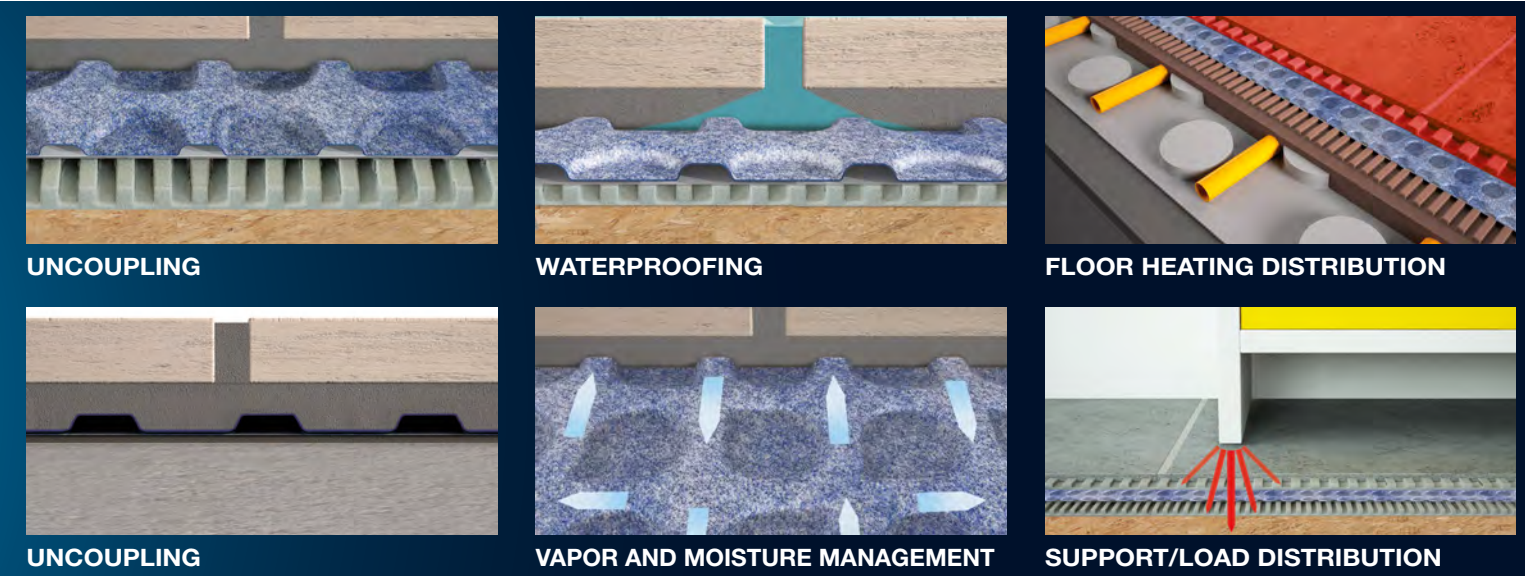
PROBAND KOLL	
Pot Life	≥ 2 h
Limit temperature for the application	+ 41°F / + 95°F
Biggest possible thickness	3/16"
Open time	≥ 20 min
Waiting time for the laying of the floor	immediate
Specific weight	108 Lb / Ft ³

PROBAND 150	
Width of the roll	≈ 6" / 10"
Length of the roll	≈ 98' 5" Ft
Total thickness	≈ 16 mil
Weight	≈ 31,5 gr/lm (1/3 oz/SqFt)



- 1 Ceramic or Porcelain Tiles
- 2 Thin-set/Adhesive
- 3 PRODESΟ®
- 4 Thin-set/Adhesive
- 5 Mortar or Plywood/OSB

LAYING'S SECTION OF PRODESΟ MEMBRANE SYSTEM

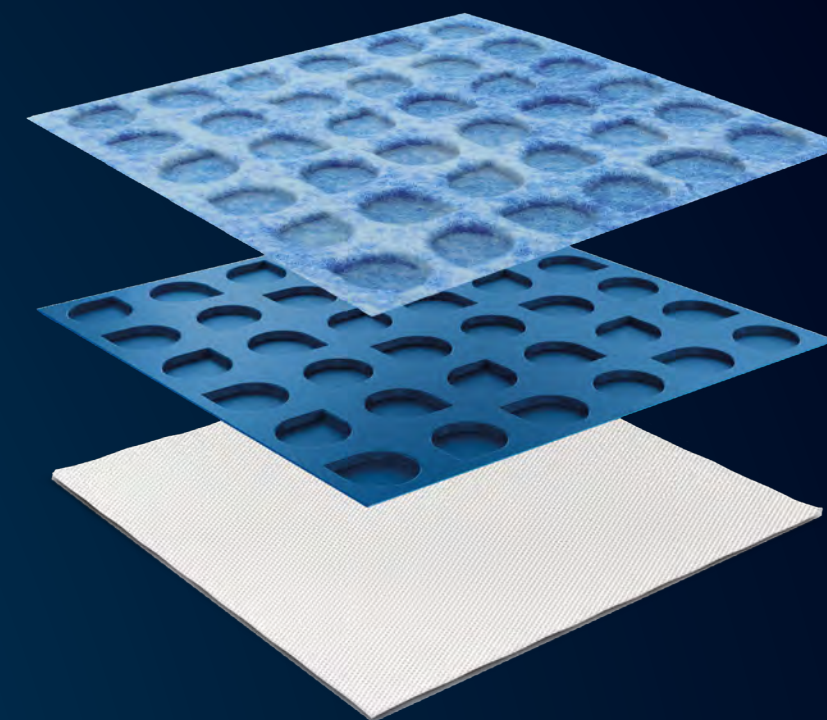


PRODESΟ® MEMBRANE SYSTEM

www.progressprofiles.com



PATENTED



Sede /Headquarter

Progress Profiles SpA
Via Le Marze 7
31011 ASOLO (TV) Italy
Tel. +39 0423 950398
Fax +39 0423 950979
Azienda certificata
UNI EN ISO 9001:2015

info@progressprofiles.com

Filiale /Branch Office & Warehouse

Progress Profiles America Inc.
4 Middlebury Boulevard (Unit 14)
Randolph, New Jersey 07869
U.S.A
Tel. 973 584 26 50
Fax 973 584 26 57

usa@progressprofiles.com

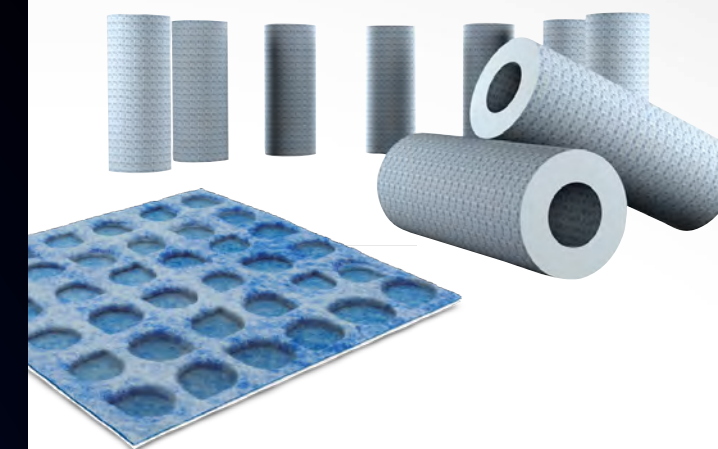


PRODESΟ® MEMBRANE SYSTEM

PROFILES, MEMBRANES FOR TERRACES/
BALCONIES & DRAINAGE SYSTEMS

Uncoupling, crack isolation, waterproofing system for problematic substrates including plywood/OSB, concrete, indoor and outdoor

PRODESΟ® MEMBRANE SYSTEM



Uncoupling, Crack Isolation and Waterproofing Membrane PRODESΟ®

PRODESΟ® is an uncoupling, crack isolation and waterproofing system specifically designed for problematic substrates including plywood, OSB, screed, concrete and suitable existing coverings. PRODESΟ® MEMBRANE can be completely waterproofed using Proband 150 and its accessories in a multitude of application including indoor, outdoor, wet areas, terraces and balconies. On the membrane it is possible to glue every natural stone and ceramic with a size no less than 2" x 2". PRODESΟ® thanks to its Vapor Management properties can be used on wood and not completely cured and cracked screed and concrete.

PRODESΟ® MEMBRANE SYSTEM COMPONENTS

PROMEMBRANE KOLL
PROMEMBRANE KOLL is a C2E1 class cementitious adhesive, with high workability and prolonged adjustability, specially designed to bond all the membranes of the "PRODESΟ" family, even overlapping and on floor heating systems and the PROFOIL membrane.



PROBAND KOLL
PROBAND KOLL is a single-component hydrophobic adhesive for the sealing of PROBAND 150/250 on PRODESΟ® MEMBRANE and PRODESΟ® HEAT/GRIP MEMBRANE.

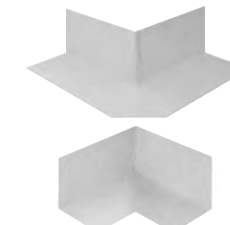


PROBAND KOLL AB
PROBAND KOLL AB is a bicomponent hydrophobic adhesive for the sealing of PROBAND 150/250 on PRODESΟ® MEMBRANE and PRODESΟ® HEAT/GRIP MEMBRANE.



PREFORMED CORNERS

Internal and external preformed corners in polyethylene provided on both side with nonwoven polypropylene fabric that guarantees its adhesion to the support.



PROBAND 150/250

PROBAND 150/250 is a waterproofing polyethylene tape with nonwoven polypropylene fabric on both side that guarantees high adhesion to the support. Use on terraces, balconies and outside surfaces of any dimension, bathrooms, showers, swimming pools and tanks. To realize waterproofing joints between floor and wall and along two adjacent rolls of PROFOIL, PRODESΟ® MEMBRANE SYSTEM and PRODESΟ® HEAT/GRIP SYSTEM



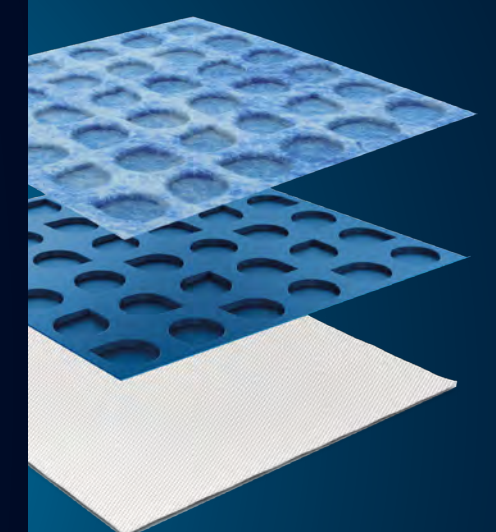
PROBAND BU

PROBAND BU is an adhesive tape in butyle provided on one side with non-woven polypropylene that guarantees high adhesion, use for the Realization of perimeter junctions in case of bituminous coverings, PVC, wood, polycarbonate, glass, plastic and metal on balconies, terraces and external surfaces of any size.



RULLER

in nylon, 40 cm - in. 1" 9/16 long, fixed to a varnished metal or stainless steel 304 frame, suitable for pressing the PRODESΟ®, PRODESΟ® HEAT & PRODESΟ® HEAT GRIP and PROFOIL. The roller is equipped with an extendable grip, length-adjustable and with an L base that allows to load 1 bag of adhesive to obtain the correct and homogenous pressing of the membranes. A tripod allows to keep the roll in the right position while loading the bag.



Cloth in POLYPROPYLENE (PP)

Sheet in POLYETHYLENE (PE)

Cloth in POLYPROPYLENE (PP)

WHY USE PRODESΟ® MEMBRANE SYSTEM

Time Saving: Installation time are drastically reduced. Membrane installation Tile Installation and Grouting can be completed in the same day.

Versatile: Can be used on any substrates both interior and exterior.

Safe: It is suitable for subfloors with cracks as it doesn't transmit the tension and movements of the substrate to the floor coverings. It can also be used on screed and wood subfloors not perfectly cured because it neutralizes the vapor pressure.



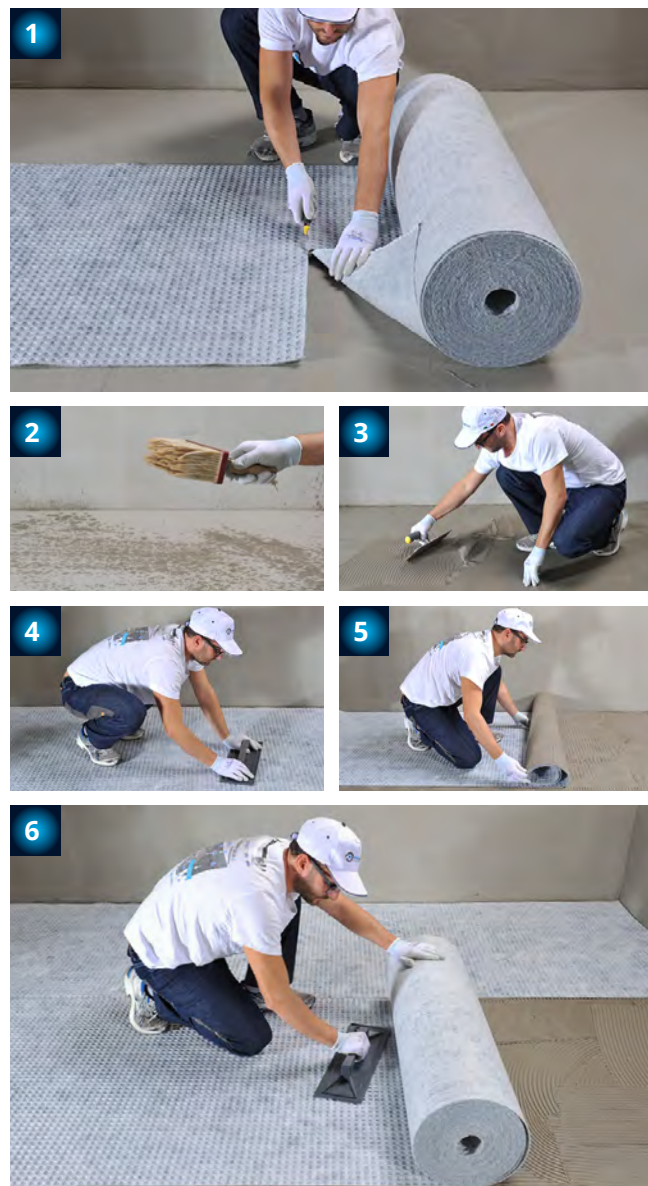
LAYING GUIDE

1 Preparation of the substrate

1. Clean the surface from dust, oil, grease, friable or weakly anchored parts, cement residuals, lime, plaster or paintings.
2. Verify the screed flatness and the presence of adequate slopes, suitable for the discharge of rain waters.
3. Verify the solidity of the screed with a hammer.
4. Verify the resistance to the abrasion of the screed with a chisel.
5. Repair possible cracks in the screed bigger than 1 mm (In. 1/32") with an epoxy bi-component ultra-rapid resin.
6. In case of overlapping, verify anchoring and the cleanness of the old floors.

2 Laying of the membrane PRODESO®

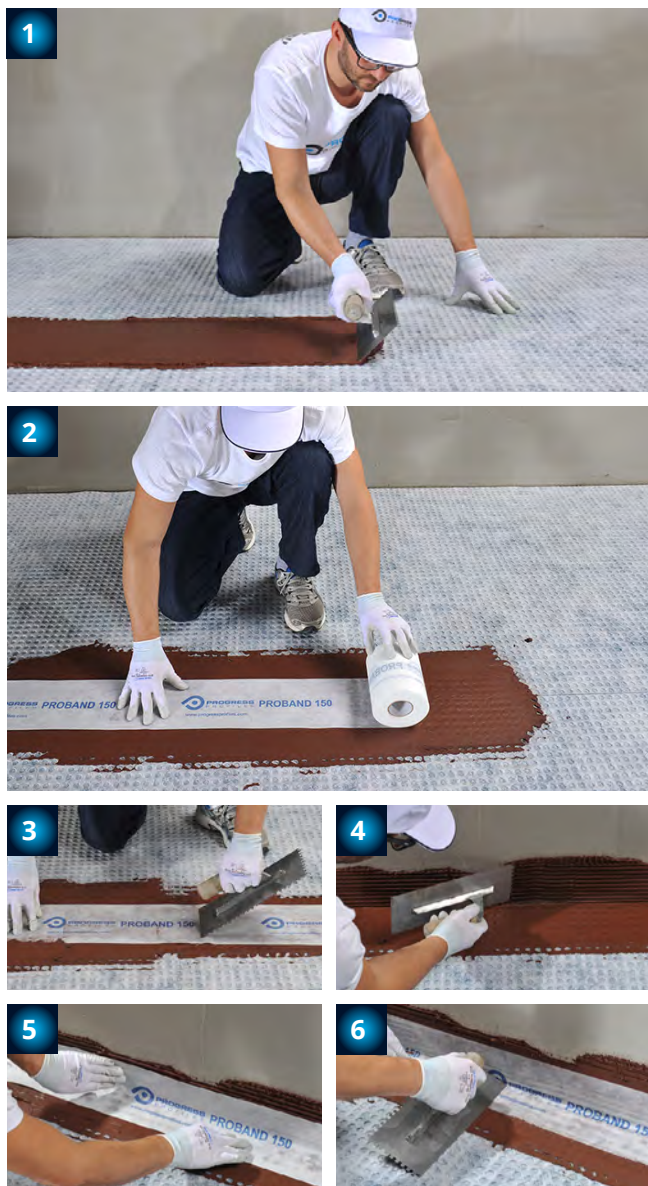
1. Cut the **PRODESO®** at the desired length, using an utility knife or scissors.
2. Dampen the surface of the screed to increase the workability of the adhesive, especially during the hottest months.
3. Apply the adhesive with notched trowel accordingly to the substrate for the anchoring of **PRODESO®**. Use Thin Set adhesive suitable for the support type.
4. Press firmly and equally the membrane with a plastic trowel.
5. Verify if **PRODESO®** is completely wet. In case of partially coverage, increase the quantity of adhesive.
6. Lay the next sheet of **PRODESO®** taking care to align it with the previous one, without overlapping.



ESSENTIAL PHASES

3 Application of PROBAND 150 between adjacent sheets and along wall/floor joints

1. Apply **PROBAND KOLL** along the joints between adjacent sheets with a smooth trowel to a width of about 20 cm (In. 8"), taking care to fill the cavity and leaving a thin layer of adhesive on top of the relief.
2. Fix **PROBAND 150** on the adhesive following the joints between the adjacent sheet.
3. Press firmly and smooth the tape to ensure complete sealing, avoiding the formation of folds.
4. Apply the waterproof sealer **PROBAND KOLL** on the wall and on the floor to a width of about 10 cm (In. 4"), taking care to fill the cavity and leaving a thin layer of adhesive.
5. Fix **PROBAND 150** on the fresh sealer, following the wall/floor joint.
6. Press firmly and smooth the tape to ensure complete sealing, avoiding the formation of folds.



4 Laying sealing and grouting of the floor joints

1. Apply with the smooth part of the trowel the adhesive, taking care to fill the cavity of **PRODESO®**.
2. Foresee an expansion joint between wall and vertical structures. For this we suggest you to the joints **PROFLEX 5 PR** or **PROFLEX ACC PR**.
3. Apply the adhesive with a notched trowel adequate for the tile size. Use Polymer Modified Thin Set suitable to the type of tile for the particular job.
4. Lay the floor with open joint of minimum 3 – 5 mm (1/8 - 3/16") as width, in function of the tile size.
5. Using the technique of the back buttering, verify if the back of the tile is completely wet.
6. Foresee expansion joints up to 3 linear meters (9 ft 10- 1/8") in both directions. For this we suggest you the joints **PROFLEX** or **PROFLEX ACC**.
8. Fill the joint with grout. Use a suitable grout.



CONSTRUCTION'S DETAILS

5 Application of the internal corner

1. Cut a strip of **PROBAND 150** about 40 cm (16") long and make a cross cut in the center to half height
2. Fold the strip in order to obtain an internal corner with overlapping bases
3. Apply **PROBAND KOLL** for a width of about 10 cm (In. 4") on the floor and wall taking care to fill the cavities of **PRODESO®**.
4. Lay the previously formed corner on the fresh sealant taking care to seal also the overlapped bases.
5. Press firmly and smooth the tape to ensure complete sealing, avoiding the formation of folds.
6. In the case of floor - wall joint (see point 3) overlap **PROBAND 150** about 10 cm (In. 4") on the corner.

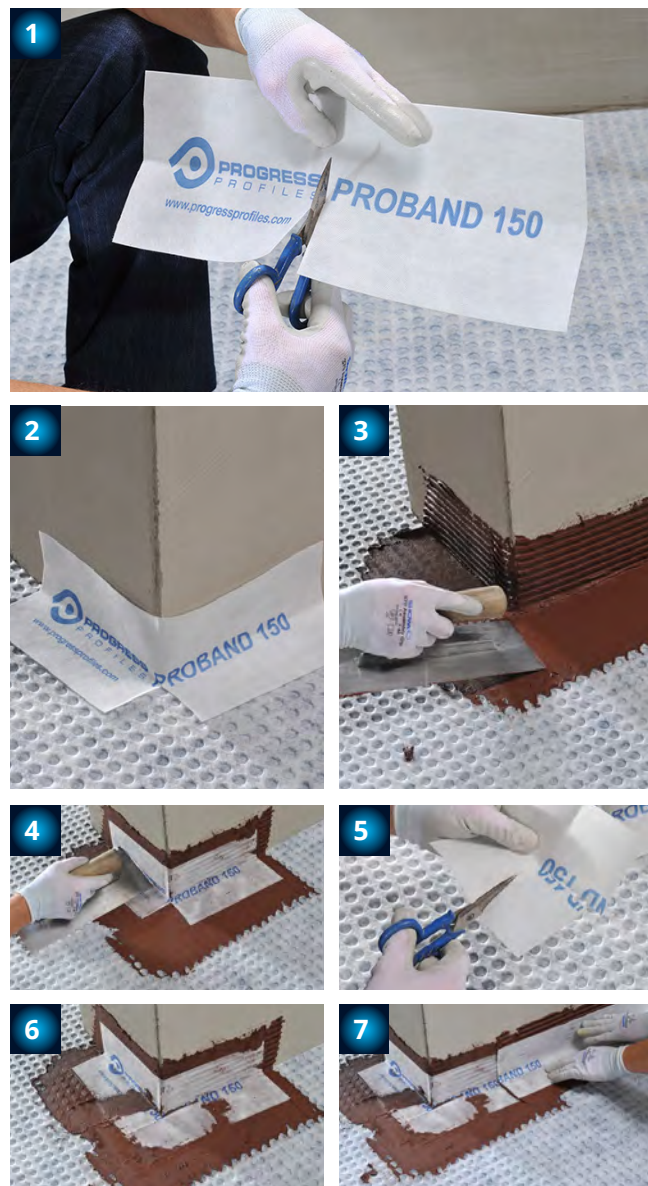
Preformed internal corners are also available and sold separately. Part Numbers PRBI



6 Application of the external corner

1. Cut a strip of **PROBAND 150** about 40 cm (16") long and make a cross cut in the middle to half height.
2. Fold the strip in order to obtain an external corner.
3. Apply **PROBAND KOLL** for a width of about 10 cm (In. 4") on the floor and wall taking care to fill the cavities of **PRODESO®**.
4. Lay the previously formed corner on the fresh sealant; press firmly and smooth the tape to ensure complete sealing of **PROBAND 150**, avoiding the formation of folds.
5. Cut a strip of **PROBAND 150** with a length equal to its height and then cut out a square equal to half of that.
6. Apply the new piece with **PROBAND KOLL** over the formed corner. Press firmly and smooth the tape to ensure complete sealing, avoiding the formation of creases in order to ensure the complete sealing of **PROBAND 150**.
7. In the case of floor - wall joint (see point 3), overlap **PROBAND 150** about 10 cm (In. 4") on the corner.

Preformed internal corners are also available and sold separately. Part Numbers PRBE



7 Application of PROBAND 150 under the threshold

1. Cut a strip of **PROBAND 150** of at least 20 cm (In. 8" longer than the threshold length).
2. Apply **PROBAND KOLL** under the threshold and on the floor, taking care to fill the cavities of **PRODESO®**.
3. Lay the previously cut strip of **PROBAND 150** on the fresh sealant.
4. Press firmly and smooth the tape to ensure complete sealing of **PROBAND 150**, avoiding the formation of folds.
5. In the case of floor - wall joint (see point 3), overlap **PROBAND 150** on the applied strip under the threshold for about 10 cm (In. 4").



8 Application of PROBAND 150 on the wall in case of bituminous coverings

1. Remove the protective film and stick the **PROBAND BU** on the wall bituminous covering.
2. Beat **PROBAND BU** with a rubber hammer to ensure its anchoring to the bituminous covering.
3. Apply **PROBAND KOLL** on **PROBAND BU** and for a width of about 10 cm (In. 4") on **PRODESO®**, taking care to fill its cavities.
4. Fix **PROBAND 150** on the fresh sealer, following the wall/floor joint.
5. Press firmly and smooth the tape to ensure complete sealing of **PROBAND 150**, avoiding the formation of folds

