

SELF DIAGNOSTIC GUIDE: Panasonic Shower Heater

DH-8BM1P



DH-6GM3P



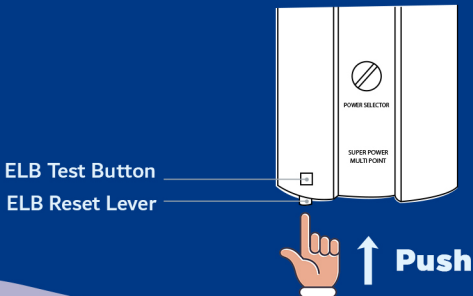
DH-10BM1P



PART A: CLEANING THE WATER FILTER

Step 1: Reset

- Make sure the unit is ON.
- Press the ELB test button. The ELB reset lever will slide down if the condition is normal.
- Reset the ELB by pushing the reset lever upwards.



NOTE

If the ELB reset lever cannot be set even if you push it up or it slides down during operation, DO NOT use the unit and contact the authorized dealer immediately. Never fix the ELB reset lever forcibly with tape and the like.

PART A: CLEANING THE WATER FILTER

Step 2: Main body cleaning.

- Be sure to switch off the miniature circuit breaker (MCB) beforehand.
- Use moist cloth to clean the unit.
- Never use Benzene, thinner, detergent, bleach and the like to clean it.
- Do not spray water on the unit or put wet towels on it.

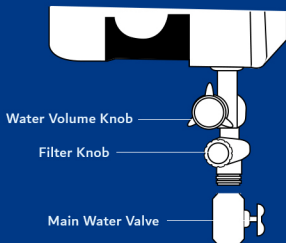


PART A: CLEANING THE WATER FILTER

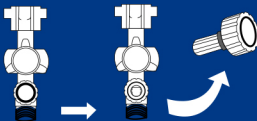
Step 3: Filter Unit Cleaning

- Clean the filter unit's filter with water once a week.
- Clean the filter unit when hot water is not drawn normally.

A Close the main valve



B Turn the Filter knob counterclockwise and pull it out

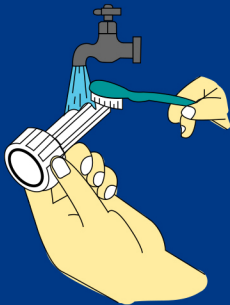


NOTE:

Filter unit is fixed to filter knob.

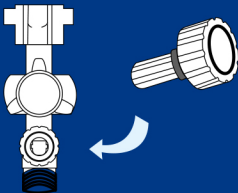
PART A: CLEANING THE WATER FILTER

C Clean the filter unit



Clean the filter with a brush and water.

D Insert the filter unit back with correct arrangement and tighten it properly clockwise



Straight Area



PART B: THERMAL CUT-OUT

Step 1: Opening the unit

Unscrew the front plate then remove it

Front Plate

Screw



Remove
Front Plate



PART B: THERMAL CUT-OUT

Step 2:

Press the manual thermal switch

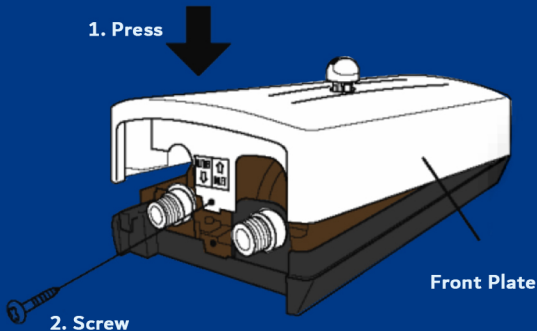
Press Down until you hear the unit click



PART B: THERMAL CUT-OUT

Step 3:

Re-screw the cover plate and test the shower heater. If the water does not heated, contact the service center immediately.



SERVICE CENTER

For Repairs & On-Site Service

Head over to
rockfordph.com/products/panasonic-installation
to book your appointment.

