

# Certificate of Analysis



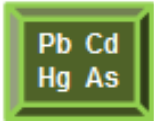
**Client:** TREADWELL FARMS  
**Client Sample ID:** Hemp Salve 600mg Cooling Mint  
**Product Type:** NON-Inhalable Product  
**Client Lot#:** SLV1-CMT1/2020-005  
**Production Date:** NA  
**Production Size:** 30 ML  
**Date Received:** 9/29/2020  
**Lab Sample ID:** F009026-1  
**Report Date:** 10/6/2020



Pesticides



Passed



Heavy Metals



Passed



Microbials



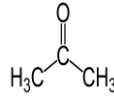
Passed



Mycotoxin



Passed



Res. Solvents



Passed



Moisture

Not Tested



Water Content

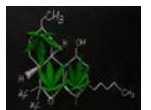
Not Tested



Foreign Matter



Passed



Terpenes

Not Tested

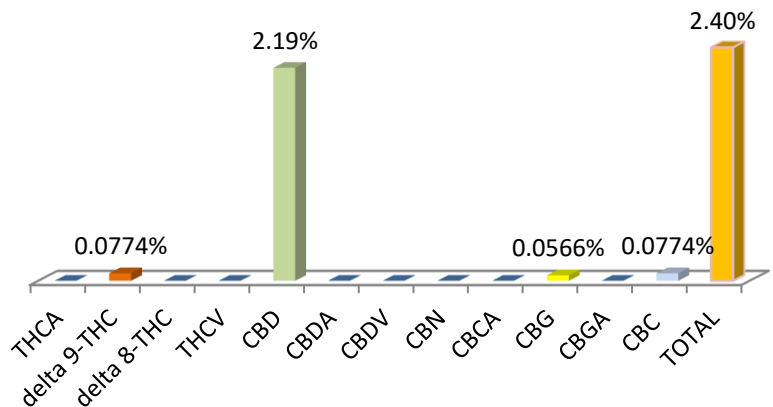
## Analysis Information

Test Method: ACCULAB SOP 15

Batch: B200940

Analyte	CAS#	Results	Units	LOQ
THCA	23978-85-0	ND	%	0.0370
delta 9-THC	1972-08-3	0.0774	%	0.0370
delta 8-THC	5957-75-5	ND	%	0.0370
THCV	31262-37-0	ND	%	0.0370
CBD	13956-29-1	2.19	%	0.0370
CBDA	1244-58-2	ND	%	0.0370
CBDV	24274-48-4	ND	%	0.0370
CBN	521-35-7	ND	%	0.0370
CBCA	185505-15-1	ND	%	0.0370
CBG	25654-31-3	0.0566	%	0.0370
CBGA	25555-57-1	ND	%	0.0370
CBC	20675-51-8	0.0774	%	0.0370

Total THC	Total CBD	Total Cannabinoids
0.077%	2.19%	2.400%
THC/Unit:	CBD/Unit:	Total Cannabinoids/Unit:
22.29 mg	630.72 mg	691.6 mg



40 S Dewey St. Eustis, FL 32726 Tel: (352) 308-8020



Accreditation#  
109150



# Certificate of Analysis

## TERMS & DEFINITION



This report shall not be reproduced, unless in its entirety, without written approval from AccuScience Laboratories. This "Certification of Analysis" was produced under appropriate laboratory conditions using the methods developed and approved under ISO 17025.

**Measurement and support equipment:** All instruments and support equipment such as volumetric glassware, balances are calibrated and verified and all records are maintained.

**Homogeneity:** This product is determined to be homogeneous following in-house procedures developed in accordance with the requirements of **ISO 17025**.

**LOQ**= Limit of Quantitation, **LOD**= Limit of Detection, **ND**= Non-Detect, **ppm**= Parts per Million, **ppb**=Parts Per Billion, **mg/PK**= Milligram per Package, **NA**=Not Applicable  
**CAS#**: Chemical Abstract Service, Registry Number, **%**= Percent

### Names and Signature of Certifying Officer

Dr. Harry Behzadi, PhD

President, CEO



Accreditation# 109150