



HOOTBOOTH® AUTOMATED AI FACIAL RECOGNITION
& THERMAL TEMPERATURE SCAN KIOSK, WIFI

Assembly instructions

V1.5_240920

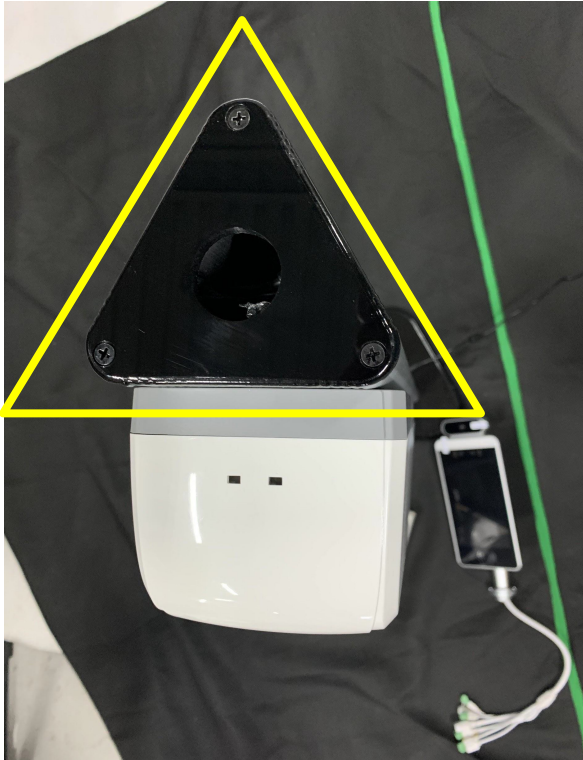
1

- Attach the base plate to the pedestal with the 3 screws provided.
- The screws are attached to the pedestal and will have to be removed to assemble.



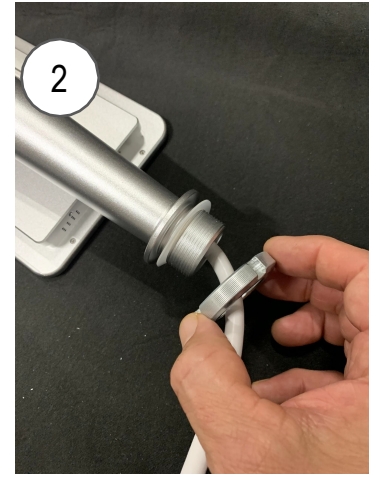
2

- Stand the unit upright.
- Remove the 3 screw on the top plate, remove the plate and set it aside.
- Pull the wire harness out of the inside of the pedestal. You should have 4 ends. (1-power, 2-USB, 1 Cat5)



3

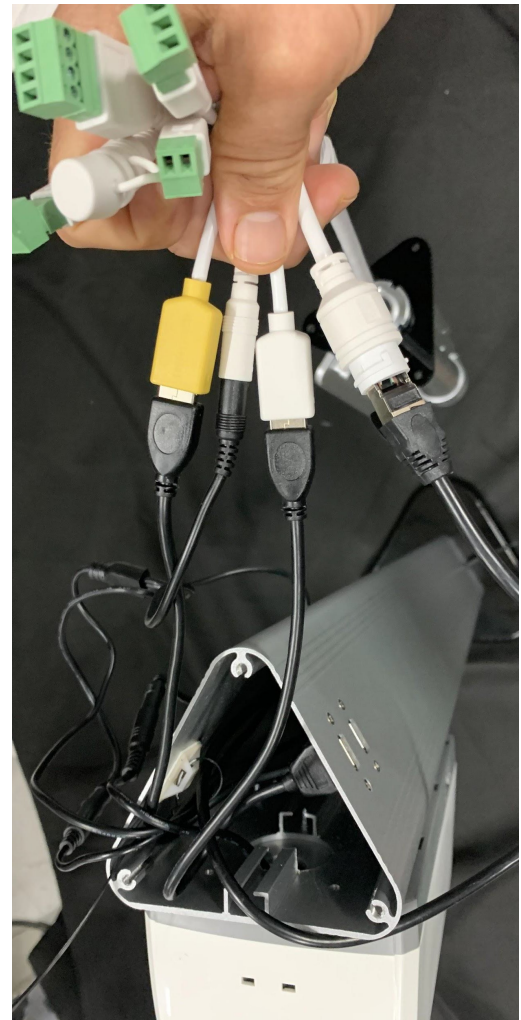
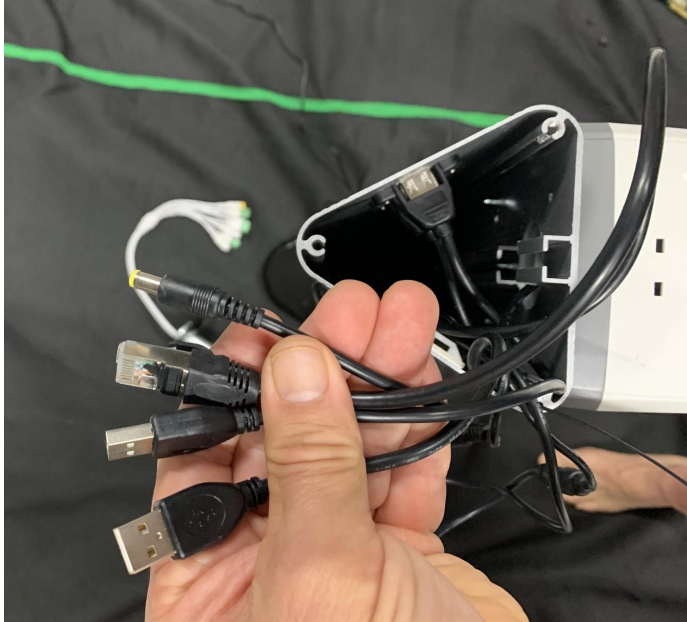
- Locate the monitor assembly and stand.
- Unscrew the monitor mounting ring and remove it.
- Locate the top plate (from step 2) and thread the wire harness through the center hole.
- Thread the wire harness through the mounting ring and reattach to the monitor stand.
- Hand tighten the ring completely snug.



4

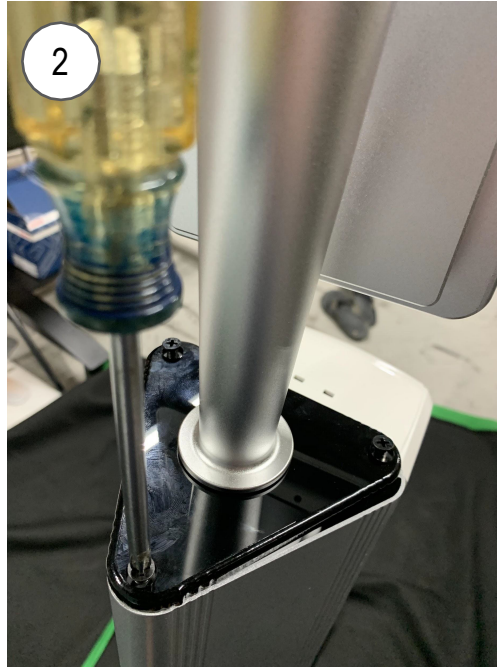
Holding the monitor so that the wire harness from the monitor stand and the pedestal can marry, attach the cables. Once attached, carefully insert the cables into the pedestal.

(This step is helpful to have a helper to hold the monitor)



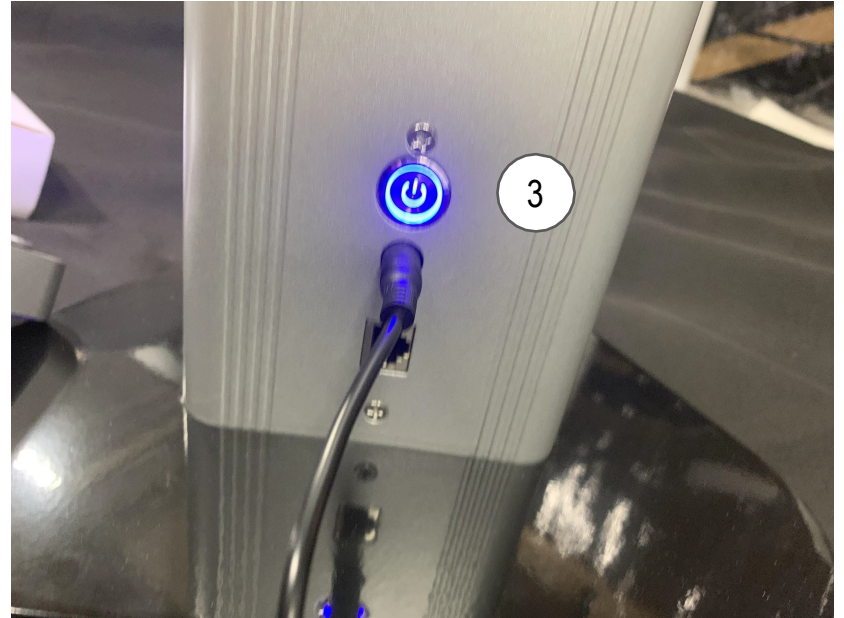
5

- With the cable inserted into the pedestal, place the monitor on top.
- Align the monitor plate with the screw mounting holes and use the original screws to secure the monitor plate and stand.
- Adjust the monitor to the direction you would like it to face.



6

- Attach the provided power supply to the bottom of the pedestal.
- Press the power button to turn it on.
- The tower light will illuminate, the hand sanitizer will be powered and the monitor will automatically turn on.



7

- Adjust the screen angle by slightly loosening the cap behind the monitor.
 - Adjust the screen to the desired angle and hold it while you tighten the cap.
- (Note: The screen should remain in place.)



8

- To fill the sanitizer reservoir, use a flat object to depress the locking tab located at the top of the sanitiser casing.
- Gently pull back on the top of the casing while you depress both holes and the case will open and flip downward.
- Remove the cap and fill the dispenser. Close when done.

