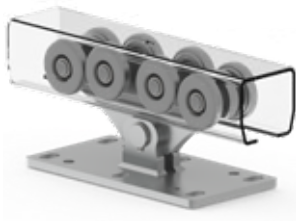


CANTILEVER GATE

Enhanced design and superior production from the Czech Republic using high quality German steel.

Formed from high quality, heavily galvanized, German steel in an 18 stage process with a slow rolling speed to reduce heat build-up and memory.



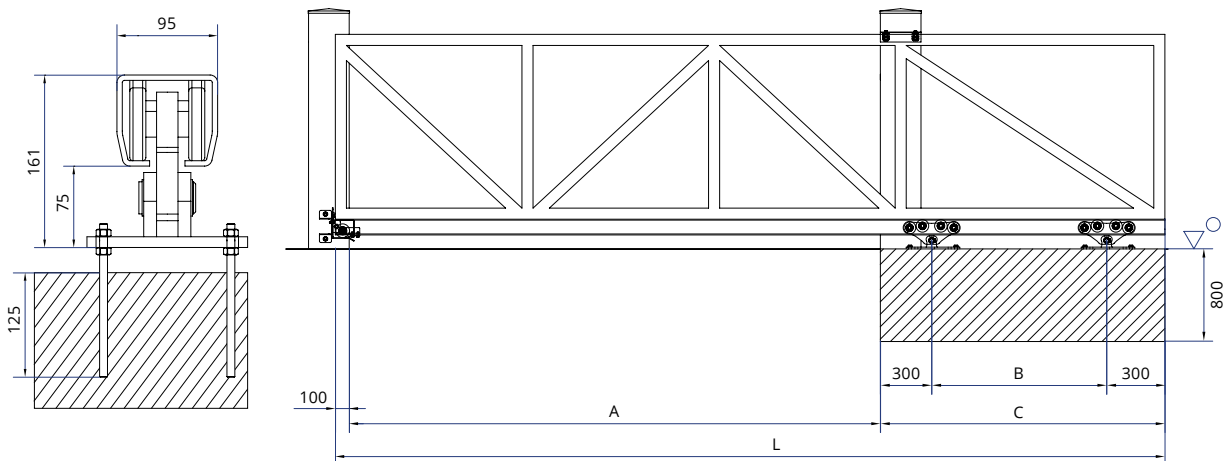
Concrete foundation should be 800mm deep by 600mm wide. Suspend reinforcing cage D10, 600x400mm in center of hole and pour concrete. Make sure the top is level and flat.

When concrete is dry install the carriages using M16 SS threaded rod to a depth of 125mm and Chem-set 101 or similar.

Use nuts with washers under and above the carriage base to allow for height adjustment and levelling.

The forces on the wheels are very high and misalignment will cause the bearings to fail. Close enough is not OK when it comes to alignment and levelling of the carriages. Alignment and levelling must be spot-on.

TECHNICAL SPECIFICATIONS:



Opening (A)	Weight (kg)	Carriage Centers (B)	Overall Length (L)	*Concrete (C)
5	600	1.5	7.2	2.1 x 0.6 x 0.8
	700	1.6	7.3	2.2 x 0.6 x 0.8
6	600	1.8	8.5	2.4 x 0.6 x 0.8
	700	1.9	8.6	2.5 x 0.6 x 0.8
	800	2.2	8.9	2.8 x 0.6 x 0.8
7	600	2.0	9.7	2.6 x 0.6 x 0.8
	700	2.3	10.0	2.9 x 0.6 x 0.8
	800	2.5	10.2	3.1 x 0.6 x 0.8
	900	2.8	10.5	3.4 x 0.6 x 0.8
8	650	2.3	11.0	2.9 x 0.6 x 0.8
	750	2.8	11.5	3.4 x 0.6 x 0.8
	850	3.1	11.8	3.7 x 0.6 x 0.8
	950	3.4	12.1	4.0 x 0.6 x 0.8
9	700	3.0	12.7	3.6 x 0.6 x 0.8
	800	3.3	13.0	3.9 x 0.6 x 0.8
	900	3.7	13.4	4.3 x 0.6 x 0.8
	1000	4.0	13.7	4.6 x 0.6 x 0.8

*L x W x D