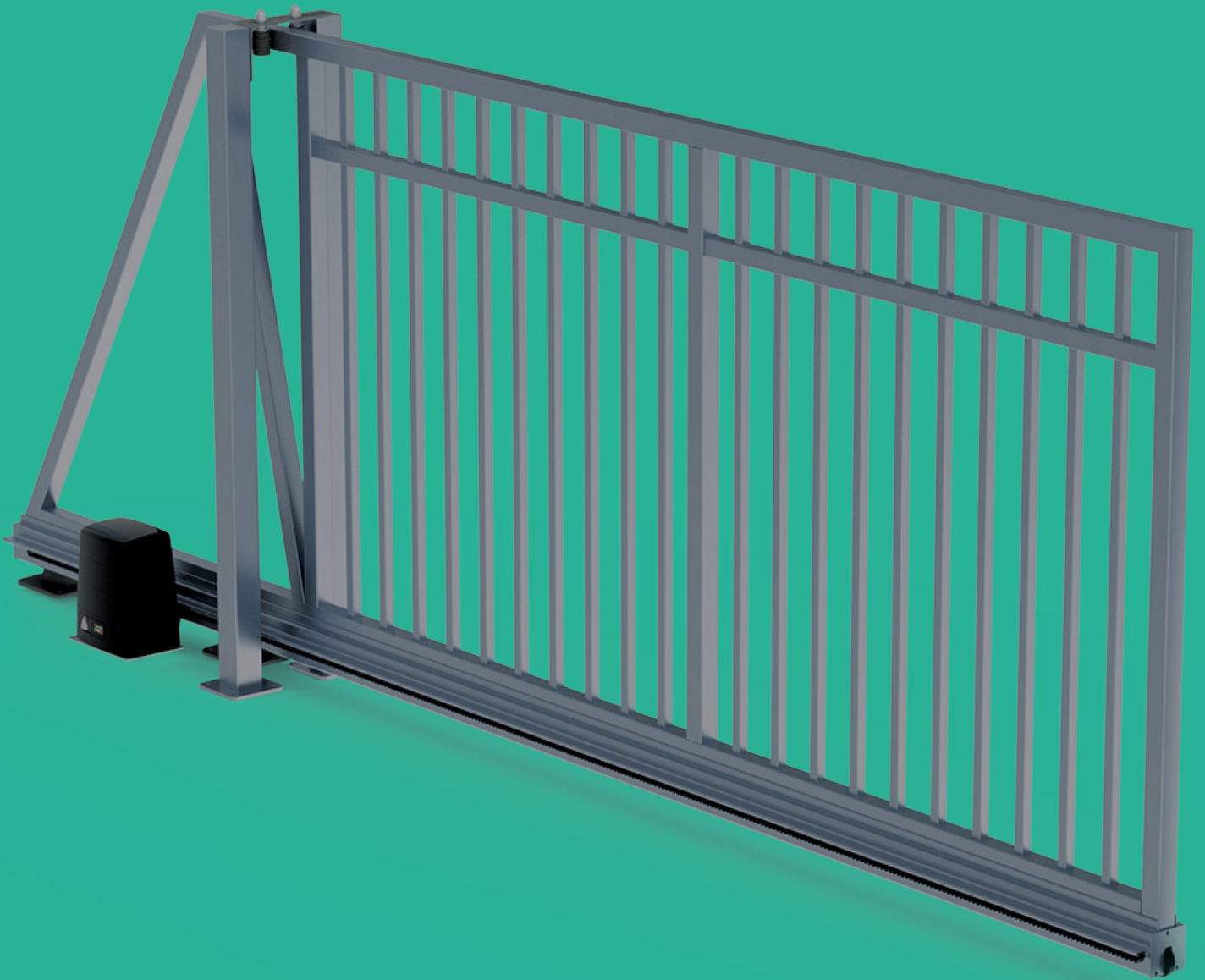


TonkaTrak.



EDGESMITH

TonkaTrak.

THE MOST SIMPLE, INSTALLER-FRIENDLY CANTILEVER GATE SYSTEM

Discover the revolutionary world of TonkaTrak, an innovative aluminum cantilever gate system meticulously designed and crafted by Edgesmith for residential or light-commercial applications. Unlike traditional cantilever systems, TonkaTrak offers a lightweight and elegant solution that eliminates the drawbacks of expensive and challenging installations associated with steel cantilever gates.

TonkaTrak allows you to incorporate your favorite gate designs effortlessly and can even be used to convert a standard sliding gate into a cantilever. Experience the benefits of a quicker installation process without compromising on quality or durability.

Join the future of gate hardware with TonkaTrak – where simplicity meets sophistication, exclusively brought to you by Edgesmith.

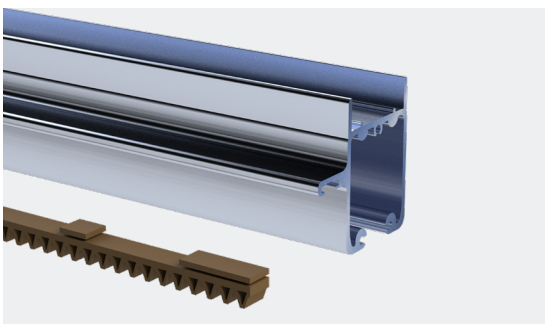
Self-Aligning, Multi-Axis Ball Joint



SELF-ALIGNING CARRIAGE

TonkaTrak's patented carriage pivots around a ball joint allowing it to auto-adjust to ensure correct alignment of the track and carriage. The ball joint also ensures that no matter what is happening up top, the forces of the gate are always carried evenly on all four wheels.

TRACK & RACK



Locally extruded track in structural grade aluminium, the track is available in two configurations: with 50mm between the fins to take a 50mm gate frame and 65mm between the fins for 65mm gate frames. Gear rack slides into a T-slot in the extrusion for a clean, neat finish. Rack is locked in position with rack clamps.

TONKA-RACK	500mm gear rack
TAC-50-4M	Track 4m, suits 50mm gate frame
TAC-50-6M	Track 6m, suits 50mm gate frame
TAC-65-4M	Track 4m, suits 65mm gate frame
TAC-65-6M	Track 6m, suits 65mm gate frame

HARDWARE KIT



A TonkaTrak Kit comes in one box and includes a complete set of hardware. Just add your track, racks and own gate design with 50mm or 65mm aluminium frame.

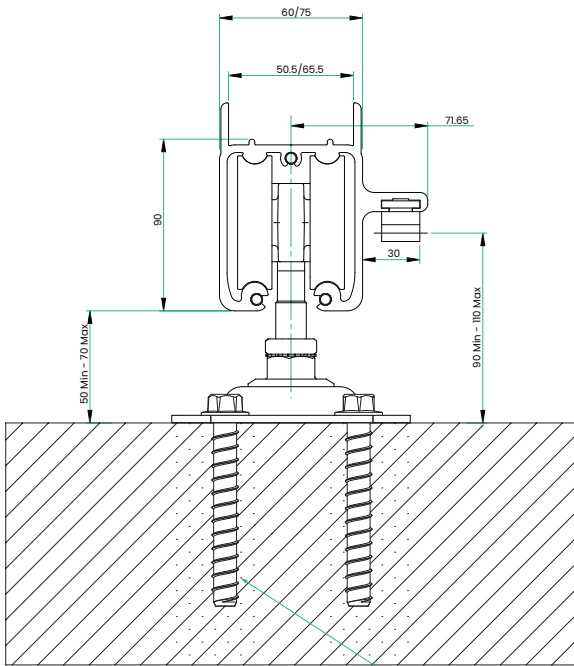
TAC-KIT	TonkaTrak Kit includes the parts below (not sold separately)
	(x2) Carriages with black base
	(x2) Black aluminium end cap with nylon wheels
	(x2) Extra-wide gate catches. Black
	(x2) Rack clamps to secure the gear rack
	(x3) Track joiners

DESIGNED & ENGINEERED

BY EDGESMITH

The Gate

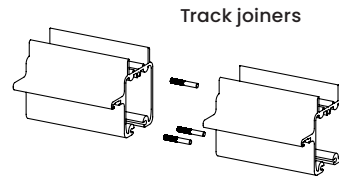
1. Suits gates of under 150kg and under 5.7m openings (8m overall length)
2. Choose the type of track to suit your opening. We recommend the 50 track for openings up to 4.5m and the 65 track for openings to 5.7m.
3. Fabricate your gate flat on the table and weld or rivet the track to the gate on completion.
4. Use the joiner pins to align and strengthen the track if it needs to be joined. Joins should be tig welded carefully so as not to distort the track or deform the running surface.



M10 CONCRETE SCREW BOLTS - 100mm min. depth
M10 CHEMICAL ANCHORS - 100mm min. depth
(EPON CB or EQUIVALENT)

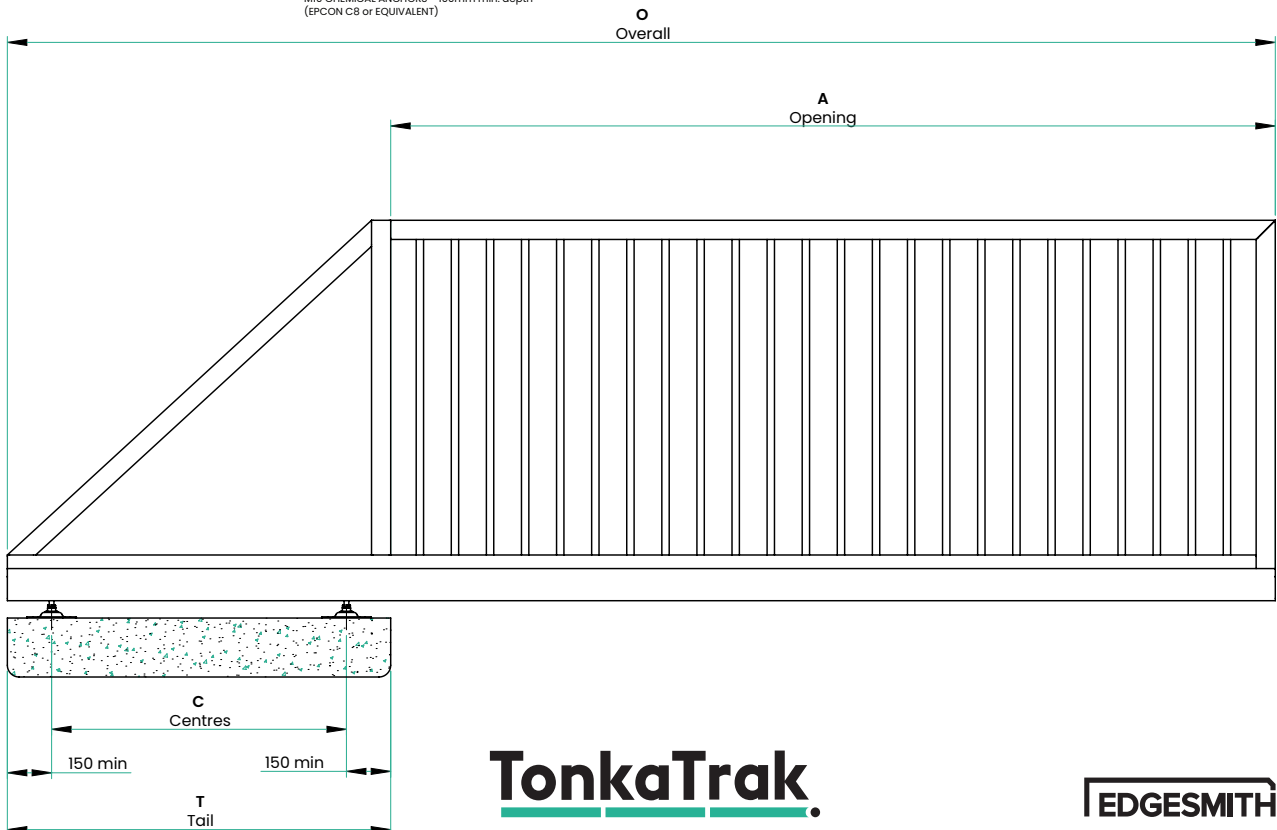
The Installation

1. Pour the concrete slab to accommodate carriages, gate motor and guide post. 300mm deep is sufficient if it is fresh slab. If the driveway concrete already extends to the area where the carriages will be bolted then it will be sufficient to support the gate as long as it has integrity.
2. Align the carriages using a string line or laser and bolt them into the slab. Screw bolts M10 x 100mm min depth or M12 chemset anchors with 100mm depth are recommended. Note that you still have 20mm of adjustment side to side once they are bolted down.
3. Slide the gate on and adjust the carriage height so the gate runs level
4. Screw on the end wheels using 14g tek screw or self taper.
5. Attach the end catches to support the gate in its open and closed positions
6. Enjoy a beer as this has taken you less time than a standard sliding gate install.



Dimensions

Opening	3.0	3.5	4.0	4.5	5.0	5.7
Centre	0.6	0.7	1.0	1.4	1.7	2.0
Tail	0.9	1.0	1.3	1.7	2.0	2.3
Overall	3.9	4.5	5.3	6.2	7.0	8.0



TonkaTrak.

EDGESMITH