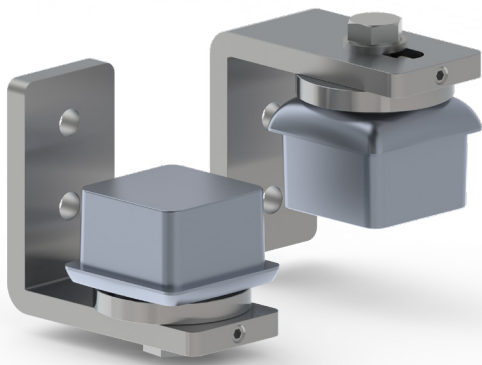




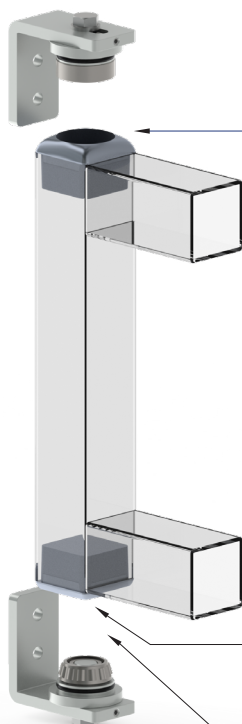
REBATE BEARING HINGE

Install Instructions



Rebate bearing hinges fit inside the frame of the gate to achieve a clean minimalist finish with very low post to gate gaps. They are the ideal hinge for automated aluminium driveway gates. The bottom hinge features a tapered thrust bearing and the top hing has a sealed ball bearing.

- Fit insert cup to gate before powder coating
- Suitable for gates leaves up to 150kg (1:2 height to width ratio)
- Uses M8 fixings
- L-bracket can be bolted or welded to gate post

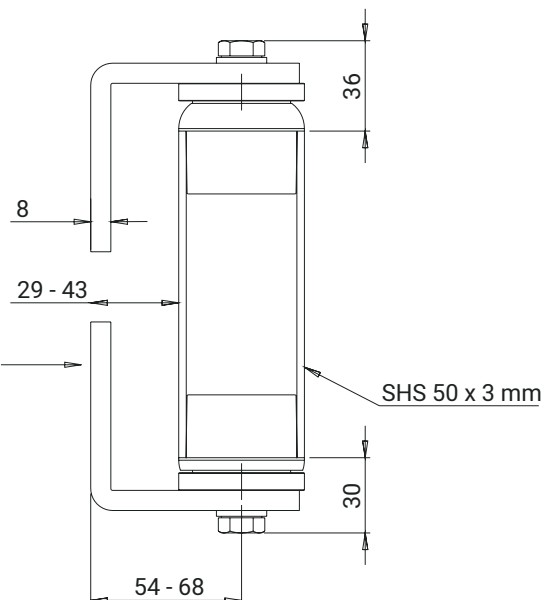


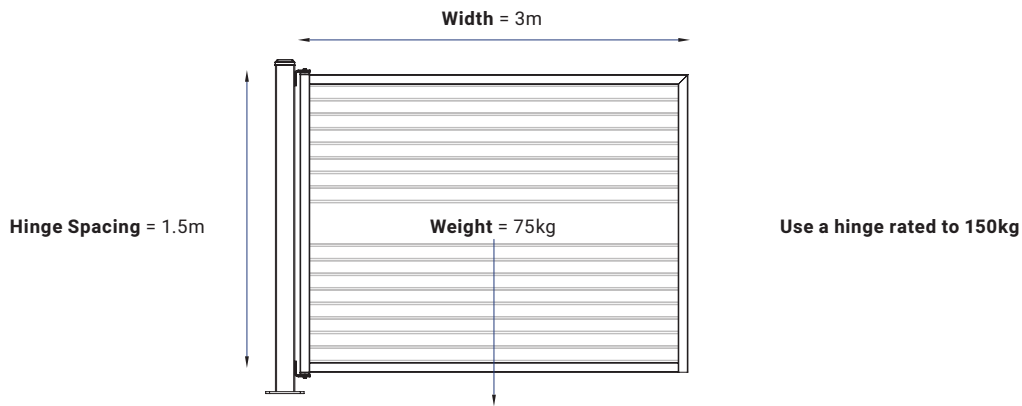
Knock-in
+ Powder coat with gate

Requires 4 - M8 fasteners
per gate

Knock-in
+ Powder coat with gate

Pack bearings with grease
prior to install.





HINGE RATING

Gate-smithing tips

- Hinges are rated for a gate with equal height and width. Wider gates put more force on the hinges and mean you should multiply your actual gate weight by a geometry factor to calculate the Effective Gate Weight. Use the table below as a guide and contact us if you have any questions.

Height to width	1:1	1:1.5	1:2	1:2.5	1:3
Factor	1	1.5	2	2.5	3



STEEL POSTS

M8 x 35 STS - Self threading screws form their own thread and are stronger than a tapped thread in wall thickness up to 3mm.

Use a 7.3mm drill for M8 self-threader.



CONCRETE POSTS

M8 x 45 MS - Chem-set Threaded Insert

POST AND FIXING

Gate-smithing tips

- Many a nice gate is let down by being swung from too light a post. Use the table below to determine your post size. Use a wall flange where possible. And for concrete in posts make sure your hole size and reinforcing are sufficient for your soil type.

Weight per leaf	40kg	50kg	100kg	200kg	300kg
Post	65x3mm	75X3mm	100x3mm	150x5mm	200x5mm

- We recommend self-threading M8 security screws for attaching to steel posts and chem-set threaded inserts with M8 security Machine screws for concrete pillars. Never use tek screws to fix your hinge to the post.