

LZE GMBH • FRAUENWEIHERSTRASSE 15 • 91058 ERLANGEN

FH101RF DEVELOPMENT KIT

APPLICATION NOTE: SENSOR NETWORK



VERSION DATE: 10.04.2024

EDITION 2

REVISION 2

0 Content

0	Content	2
1	Introduction	3
2	How it works	4
3	FH101RF NetworkTool	5
4	Getting started	7
5	Frequency and band setting	8
6	Measuring the radio range with the Ping/Pong method	9
7	SoC radio and FH101RF settings	12
8	Assembly and Function Matrix	13
9	Electrical and RF specifications	14
10	PC Requirements	15
11	LZE GmbH	30

1 Introduction

The document describes an example application of an ultra-low power network of sensors using RFicient technology. The application is based on the hardware of the FH101RF development kit. It presents a possible implementation of a radio sensor network, which allows the user to evaluate or parameterize one or more autonomous ultra-low power sensors via radio using the FH101RF radio receiver. A possible use of such a network is e.g. an application that requires asynchronous radio telemetry with low latency and very long runtime.

Such as reading temperature, energy or smoke sensors during asynchronous events.

The basic functionality of this application provides the reading of battery voltage, runtime as well as the temperature of the sensor module. The following nomenclature is defined below:

- Gateway: A development kit board flashed with appropriate firmware and connected via USB to computer.
- Sensor-Node: A development kit board, flashed with appropriate firmware, equipped with CR2032 battery.
- Node-ID: A 16-bit identification number of the sensor node.
- Broadcast-ID: A 16-bit identification number which corresponds to the broadcast type.

Note: The implementation is for demonstration purposes only. In the following chapters, the important functions of the application are explained.

2 How it works

The basic principle behind this application is based on functionality of the FH101RF receiver. A radio network whose nodes are permanently available and yet very power efficient. While the wireless network is idle, the sensor nodes are in a very low power state. By means of the FH101RF receiver, they can be woken up with very short latency and subsequently read out or parameterized. The WakeUp can take place addressed or per broadcast via gateway.

The awakened sensor node(s) responds to the gateway. Figure 1 shows how a broadcast message is sent by the gateway. All sensor nodes that receive this message send out a response with the respective node ID. The response to a broadcast message is time-delayed and is calculated based on the respective node ID.

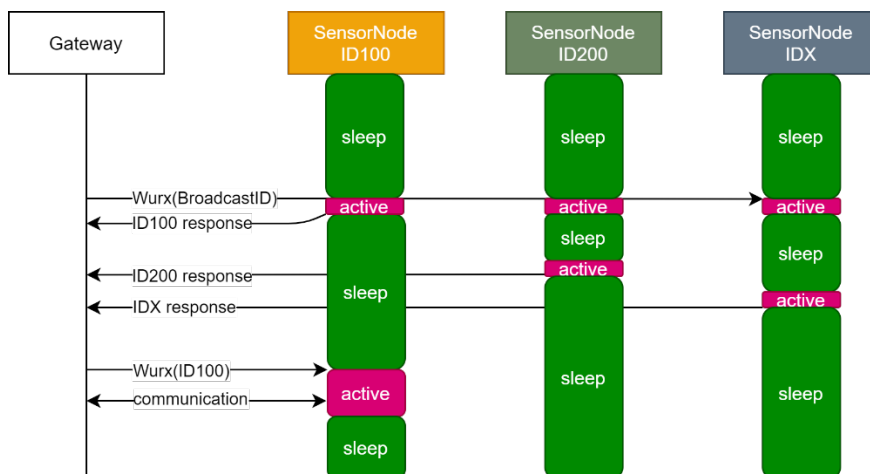


Figure 1: Addressed and broadcast wake up

The gateway receives the response. Thus, the gateway scans all sensor nodes in its radio range. If the Node-IDs are known, an addressed WakeUp can take place. For this purpose, the WakeUp telegram must be coded with the node ID according to the specifications of the FH101RF data sheet. An addressed WakeUp puts the addressed sensor node into communication state. The communication is done with a proprietary message format. After communication, the sensor node puts itself into the low-power sleep state. This happens even if there is no communication after a time out.

3 FH101RF NetworkTool

The management, control and configuration are done in the FH101RF Network Tool see Figure 2. This offers the option of parameterizing the transmission power of the gateway, a list of sensor nodes as well as functions for communication and signal generation. When closed, an entry provides information about the node ID, radio field strength of the received signal at the gateway and time stamp of the last communication.

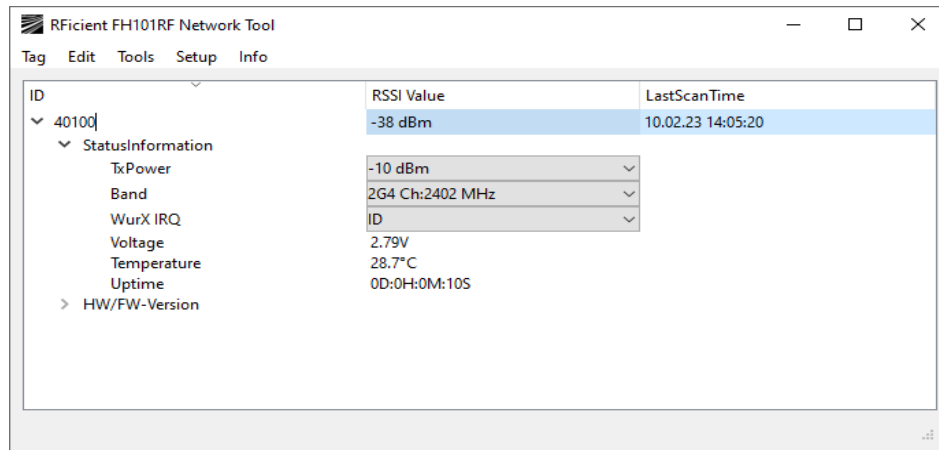


Figure 2: FH101RF Network Tool

The status information of the respective sensor node is displayed in the StatusInformation menu. Access to the menu is via the arrow next to the sensor node entry. If a menu is expanded by the arrow, the data of the respective menu is updated automatically. To update the data when a menu is closed, it must be closed and expanded again by clicking on the arrow. In addition, some menu entries have a drop-down menu which can be opened by clicking the right mouse button. Figure 2 shows a sensor node entry with the ID 40100 it supports the parameters like:

- TxPower: TX power setting, this setting determines the transmit power of the PA amplifier of the sensor node. Important: Please observe the respective regulator guidelines, in CR2032 button cell operation transmitting powers > -10 dBm are not recommended.
- Band: Band and Frequency setting of the Sensor node.
- WurX IRQ: IRQ setting of the FH101RF receiver. Supported options ID for selective wake up and CodeA/B Fehler! Textmarke nicht definiert.. CodeA/B Fehler! Textmarke nicht definiert. is fault tolerant and should be used in highly disturbed radio environments.
- Voltage: Voltage of the CR2032 battery during the active phase of the module. Important: Voltage at the battery differs depending on the state of the battery, significantly, between the active and passive phase.
- Temperature: Temperature of the MCU, 8bit resolution, manufacturer specifies a deviation of $\pm 3^{\circ}\text{C}$.
- Uptime: Runtime after start of the module is zeroed after power up or reset of the module.
- HW/FW-Version: Firmware information of the sensor node.

Note: the menu entries may vary depending on the equipment, e.g. plug on sensors and FW version of the sensor nodes.

¹ No broadcast is available.

Note: If the connection is disturbed during the reading of the sensor node, the corresponding menu remains closed. The status of the node is displayed as offline under RSSI Value. To read out again, click on the arrow symbol.

Note: When changing the sensor node settings in the StatusInformation menu, the set settings are not checked by the radio return channel. To check that the settings have been adopted by the sensor node, the StatusInformation menu must be read out again. This is done by closing and opening the StatusInformation menu with the arrow.

4 Getting started

For the operation of the application, the driver requirements as well as the Assembly and Function Matrix must be fulfilled. If this is the case, connect the gateway to the PC and start the FH101RF Network Tool application. This is part of the development kit and is included in the scope of delivery.

The detected gateway is displayed under Menu Setup/GateWay/UsbDevice. Figure 2 shows the corresponding gateway menu entries. If there is no entry in the menu, the requirements and the PC<->gateway connection must be checked.

It must be ensured that the gateway and the sensor node are set to the same band and frequency. The band setting of the gateway is done under the menu item Setup/GateWay/FreqBand. The band setting of the sensor node is explained in the following chapter. Once the GateWay is detected and the band setting is complete, the gateway can scan the sensor nodes within range. This can be done by a broadcast message or by inserting the CR2032 battery into the sensor node. The sensor node will automatically send out a "HELLO" message when the battery is inserted. If the gateway receives this, an entry is made in the NetworkTool with the corresponding node id.

A scan of the sensor nodes in the range of the gateway is done in Menu: Tools/Broadcast or by pressing the B key on the keyboard, the focus must be on the application.

The sensor nodes appear in the overview. If this is not the case or if the sensor nodes are out of range, the transmission power of the gateway can be increased in the menu Setup/GateWay/TxPower.

Here the regulations of the respective radio regulators are to be considered.

The sensor nodes recorded in the Network Tool list can be read out and parameterized.

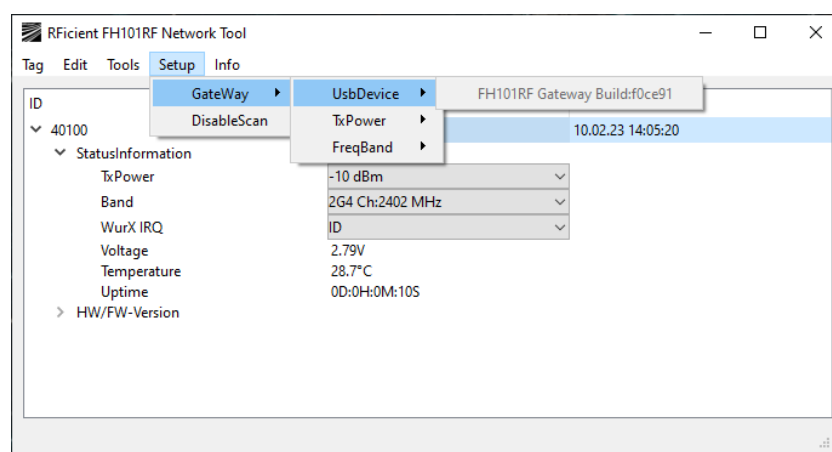


Figure 3 FH101RF Network Tool GateWay menu

5 Frequency and band setting

As mentioned in the previous chapter, the band setting of the gateway and the sensor node must match. In the delivery state, the band setting of the sensor node is 2G4, the radio channel is 2402 MHz. This setting can be changed by flashing configuration templates, see APP note RFicient® Boot loader. The flashed configuration template is loaded from the MCU memory into the corresponding runtime variable during power up of the node. The following matrix shows the band allocation of the *.hex configuration templates.

Table 1 configuration templates eu version

	band 433 MHz	band 868 MHz	band 2402 MHz	band 2480 MHz
conf433eu.hex	x			
conf868eu.hex		x		
conf2g4eu_l.hex			x	
conf2g4eu_h.hex				x

Table 2 configuration templates non eu version

	band 433 MHz	band 915 MHz	band 2402 MHz	band 2480 MHz
conf433.hex	x			
conf915.hex		x		
conf2g4_l.hex			x	
conf2g4_h.hex				x

Furthermore, the band setting of the sensor node can be changed at runtime in the band menu of the Network Tool application. It is important to observe the sequence. First the band setting of the sensor node has to be done and only then the band setting of the GateWay.

Note: sometimes it can happen that the configuration message to the sensor node is overlaid and disturbed by a radio interferer. This is especially the case with band 24xx. To avoid this, the distance between gateway and node should be reduced or the gateway transmit power should be increased.

Note: that changing the sensor node band configuration at runtime by the Network Tool is volatile and is not active at the next power up sequence of the module.

Note: after changing the band setting, the antennas on the SoC radio interface (Tx/Rx) must be changed according to the setting. This concerns the gateway as well as the node module.

Note: configuration of the gateway using templates is permitted

6 Measuring the radio range with the Ping/Pong method

Another possibility to measure the radio range is offered by PingTool. This is part of the Network Tool application and allows the user to wake up the selected sensor node cyclically with a periodicity of 1 second. Immediately after waking up the node, the GateWay sends an additional ping message via the SoC transceiver, addressed to the corresponding sensor node. The corresponding sensor node then responds with a pong message. This message is received by the GateWay, evaluated and then forwarded to the Network Tool. Thereby the information like the receive level (RSSI) of the signal as well as FH101RF runtime parameters are determined. The processes are shown in simplified form in Figure 4.

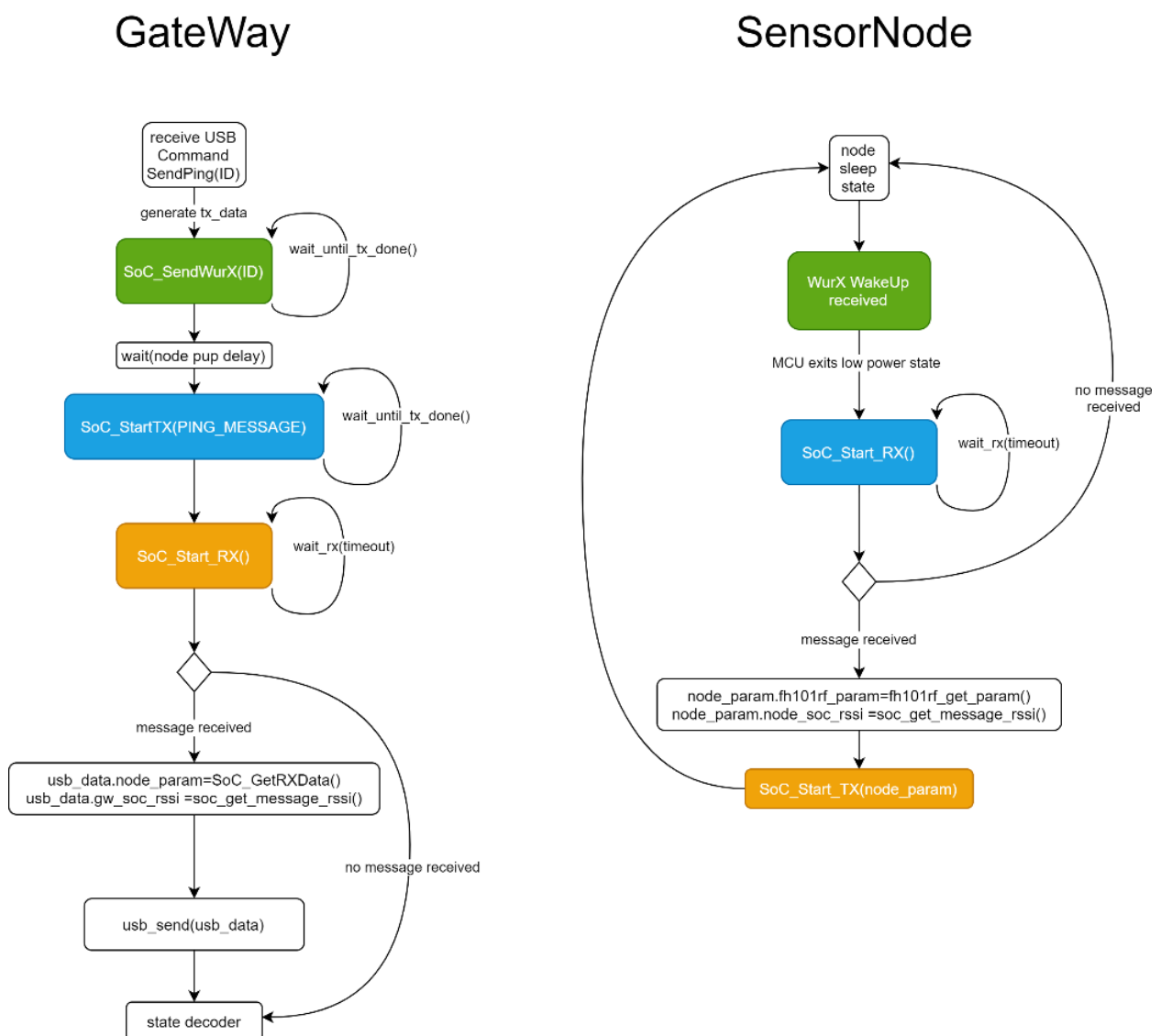


Figure 4: Ping/Pong flow chart

The PingTool is called by a context menu in the Network Tool application. The context menu is displayed by right mouse click below the RSSI Value column. Figure 5 shows the context menu. Clicking on the PingTool menu item starts the corresponding application.

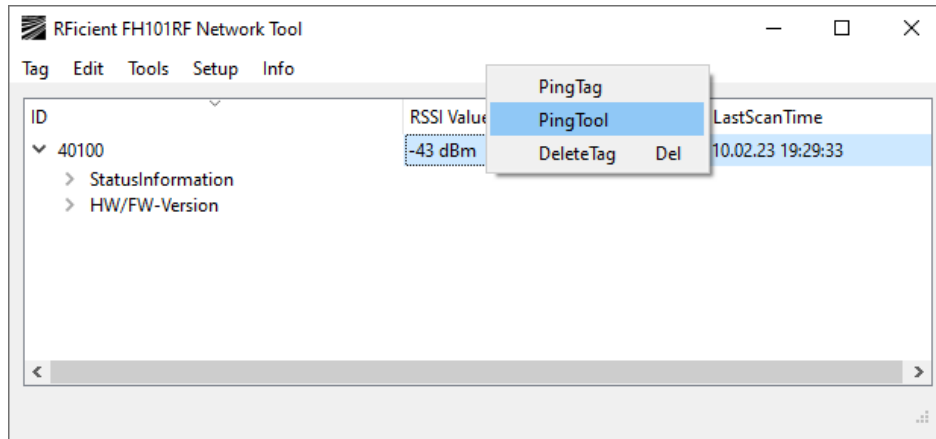


Figure 5: PingTool context menu

By clicking on the menu item PingTool the corresponding tool is started.

The Figure 6 shows the PingTool with the ID (NodeID) of the corresponding sensor node in the window header.

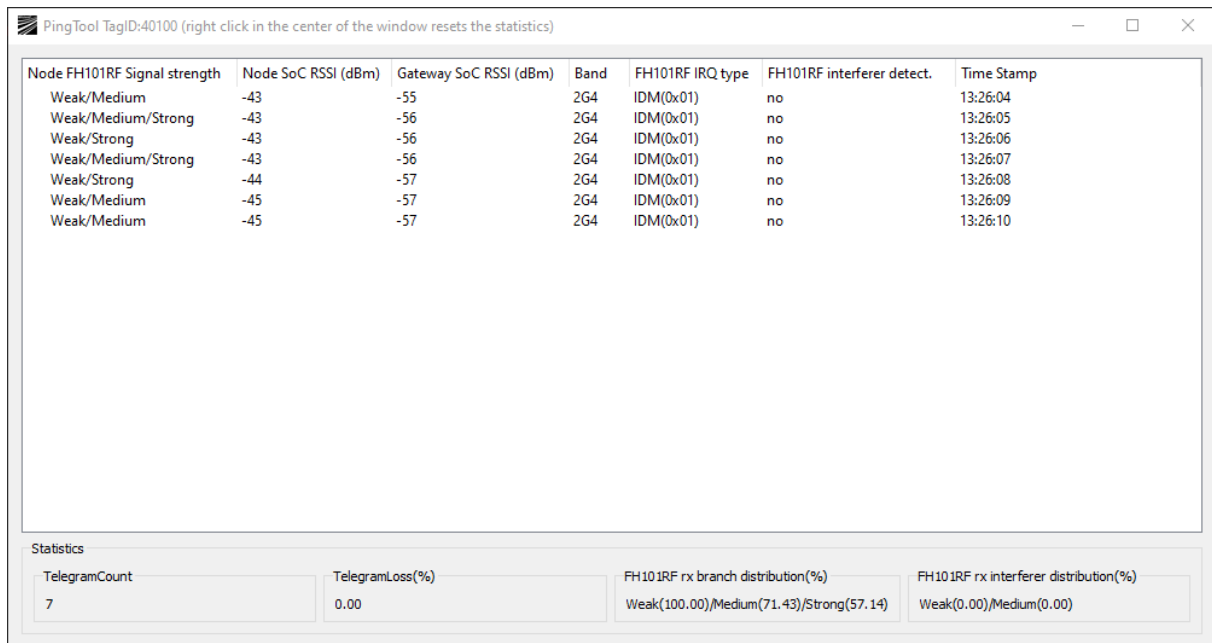


Figure 6: PingTool Application

This contains the following information about the respective telegram.

- Node FH101RF Signal strength: The FH101RF signal strength of the received WakeUp telegram. This shows the FH101RF branches that have received the signal/telegram.
- Node SoC RSSI: Signal strength of the received ping telegram at the SoC receiver of the sensor node.
- Gateway SoC RSSI: Signal strength of the received ping telegram at the SoC receiver of the gateway.
- Band: FH101RF band, which has triggered.
- FH101RF IRQ type: FH101RF IRQ type that has triggered.
- FH101RF interferer detector: Interferer detector this indicates possible interfered receive branches of the FH101RF receiver by radio interferers. It is expected that the telegram be received by all three branches weak/medium/strong at the corresponding strong reception level. If this is not the case, it can usually be assumed that the more sensitive receive branch is disturbed. As an example: with a telegram which was received only by the medium branch it can be assumed that the weak branch is disturbed.
- TimeStamp: Local time at the time of receipt of the telegram.

Additionally in the lower area of the PingTool application statistic information are attached. These show the statistics about all currently displayed telegrams. These can be deleted by right clicking on any telegram.

Note: while the PingTool is running, all settings of the GateWay and the sensor node are still available and can be changed.

7 SoC radio and FH101RF settings

Table 3: SoC-Radio configuration FH101RF pattern sending

Band/Setting	Modulation	Symbol rate (bps)	Frequency (MHz)	Shaping filter
433 Ch:433.9	OOK	33115	433.9	None
868 Ch:868.4	OOK	33115	868.4	None
915 Ch:916.5	OOK	33115	916.5	None
2G4 Ch:2402	OOK	33115	2402	None
2G4 Ch:2480	OOK	33115	2480	None

Table 4: SoC Radio configuration main data channel

Band/Setting	Modulation	Deviation (kHz)	Symbol rate (bps)	Frequency (MHz)	Shaping filter
433 Ch:433.9	FSK2	20	32000	433.9	Gaussian(.5)
868 Ch:868.4	FSK2	20	32000	868.4	Gaussian(.5)
915 Ch:916.5	FSK2	20	32000	916.5	Gaussian(.5)
2G4 Ch:2402	FSK2	20	32000	2402	Gaussian(.5)
2G4 Ch:2480	FSK2	20	32000	2480	Gaussian(.5)

Table 5: FH101RF register settings

Band/Setting	LO Target (MHz)	Preamble data rate (bps)	Data rate (bps)	Desired ZF Frequency (MHz)	OFFSET_CAL Setting COMP_THRESH_S/M/W
433 Ch:433.9	470	1024	32768	36	0x14/0x14/0x09
868 Ch:868.4	906	1024	32768	38	0x14/0x14/0x09
915 Ch:916.5	956	1024	32768	40	0x14/0x14/0x09
2G4 Ch:2402	2350	1024	32768	52	0x14/0x14/0x09
2G4 Ch:2480	2530	1024	32768	50	0x14/0x14/0x09

8 Assembly and Function Matrix

Board Mode	Firmware	Red LED	Green LED	Antenna TxRx	Antenna RFin433	Antenna RFin868	Antenna RFin2G4	D2XX Driver	USB – PC connection	Pin-Header-Jumpers	CR2032	Onboard current meas. switch
Gate-Way	gfwf_(vers)_(build)_.hex	On/Off	On	Yes ¹	-	-	-	Yes	Yes	Yes fully equipped	No	Off
Sensor Node	sensorfw_(vers)_(build)_.hex	Very short On @power up	Off	Yes ¹	Yes ²	Yes ²	Yes ²	-	No	Yes fully equipped	Yes	Off

12

¹ Depending on selected band

² When corresponding band is enabled

9

Electrical and RF specifications

Sensor-Node	
Voltage (CR2032)	min: 2.6 V / typ. 3.0 V
Current	max: 80 mA Sleep @EM3: typ. 7.2 μ A
Gateway	
Voltage	USB 5V / Core typ: 3.3 V
Current	max: 500 mA
Tx Power	min: -30 dBm / max ¹ : 17 dBm

¹ depending on the configuration and only on certain bands

10 PC Requirements

The following PC requirements must be met:

- OS: Windows 10
- USB Interface: min. USB 1.1
- D2XX Driver: <https://ftdichip.com/>

11

Open Source Software and Licence

Copyright and OSS licensing information.

The Fraunhofer-Gesellschaft zur Foerderung der angewandten Forschung e.V., Hansastrasse 27c, 80686 Munich, Germany (further: Fraunhofer) is holder of all proprietary rights on this computer program. You can only use this computer program if you have closed a license agreement with Fraunhofer or you get the right to use the computer program from someone who is authorized to grant you that right. Any use of the computer program without a valid license is prohibited and liable to prosecution.

Copyright©2023 Gesellschaft zur Foerderung der angewandten Forschung e.V. acting on behalf of its Fraunhofer Institute for Integrated Circuits IIS, Erlangen (Germany). All rights reserved.

Contact: frank.oehler@iis.fraunhofer.de

The Open Source software component listed in the next section(s) are not licensable under this subject matter or an Amendment thereto. Each Open Source software component is copyrighted by a third party/third parties, namely the copyright holder/s indicated in the copyright notices in the corresponding source files or other materials accompanying the respective Open Source software. Each Open Source software component is licensable under its own applicable license conditions.

The Evaluation Kit uses the following open source libraries under the specified licenses:

12 Software components & licenses

List of Open Source Software

Component	OSS Module Name	Module Version	License
Qt5Core.dll	Qt5Core	5.12.2	LGPL, Vers. 3
Qt5GUI.dll	Qt5Gui	5.12.2	LGPL, Vers. 3
Qt5Svg.dll	Qt5Svg	5.12.2	LGPL, Vers. 3
Qt5Widgets.dll	Qt5Widgets	5.12.2	LGPL, Vers. 3

13

Appendix

Licence text

GNU GENERAL PUBLIC LICENSE

Version 3, 29 June 2007

Copyright © 2007 Free Software Foundation, Inc. <<https://fsf.org/>>

Everyone is permitted to copy and distribute verbatim copies of this license document, but changing it is not allowed.

Preamble

The GNU General Public License is a free, copyleft license for software and other kinds of works.

The licenses for most software and other practical works are designed to take away your freedom to share and change the works. By contrast, the GNU General Public License is intended to guarantee your freedom to share and change all versions of a program--to make sure it remains free software for all its users. We, the Free Software Foundation, use the GNU General Public License for most of our software; it applies also to any other work released this way by its authors. You can apply it to your programs, too.

When we speak of free software, we are referring to freedom, not price. Our General Public Licenses are designed to make sure that you have the freedom to distribute copies of free software (and charge for them if you wish), that you receive source code or can get it if you want it, that you can change the software or use pieces of it in new free programs, and that you know you can do these things.

To protect your rights, we need to prevent others from denying you these rights or asking you to surrender the rights. Therefore, you have certain responsibilities if you distribute copies of the software, or if you modify it: responsibilities to respect the freedom of others.

For example, if you distribute copies of such a program, whether gratis or for a fee, you must pass on to the recipients the same freedoms that you received. You must make sure that they, too, receive or can get the source code. And you must show them these terms so they know their rights.

Developers that use the GNU GPL protect your rights with two steps: (1) assert copyright on the software, and (2) offer you this License giving you legal permission to copy, distribute and/or modify it.

For the developers' and authors' protection, the GPL clearly explains that there is no warranty for this free software. For both users' and authors' sake, the GPL requires that modified versions be

marked as changed, so that their problems will not be attributed erroneously to authors of previous versions.

Some devices are designed to deny users access to install or run modified versions of the software inside them, although the manufacturer can do so. This is fundamentally incompatible with the aim of protecting users' freedom to change the software. The systematic pattern of such abuse occurs in the area of products for individuals to use, which is precisely where it is most unacceptable. Therefore, we have designed this version of the GPL to prohibit the practice for those products. If such problems arise substantially in other domains, we stand ready to extend this provision to those domains in future versions of the GPL, as needed to protect the freedom of users.

Finally, every program is threatened constantly by software patents. States should not allow patents to restrict development and use of software on general-purpose computers, but in those that do, we wish to avoid the special danger that patents applied to a free program could make it effectively proprietary. To prevent this, the GPL assures that patents cannot be used to render the program non-free.

The precise terms and conditions for copying, distribution and modification follow.

TERMS AND CONDITIONS

0. Definitions.

“This License” refers to version 3 of the GNU General Public License.

“Copyright” also means copyright-like laws that apply to other kinds of works, such as semiconductor masks.

“The Program” refers to any copyrightable work licensed under this License. Each licensee is addressed as “you”. “Licensees” and “recipients” may be individuals or organizations.

To “modify” a work means to copy from or adapt all or part of the work in a fashion requiring copyright permission, other than the making of an exact copy. The resulting work is called a “modified version” of the earlier work or a work “based on” the earlier work.

A “covered work” means either the unmodified Program or a work based on the Program.

To “propagate” a work means to do anything with it that, without permission, would make you directly or secondarily liable for infringement under applicable copyright law, except executing it on a computer or modifying a private copy. Propagation includes copying, distribution (with or without modification), making available to the public, and in some countries other activities as well.

To “convey” a work means any kind of propagation that enables other parties to make or receive copies. Mere interaction with a user through a computer network, with no transfer of a copy, is not conveying.

An interactive user interface displays “Appropriate Legal Notices” to the extent that it includes a convenient and prominently visible feature that (1) displays an appropriate copyright notice, and (2) tells the user that there is no warranty for the work (except to the extent that warranties are provided), that licensees may convey the work under this License, and how to view a copy of this License. If the interface presents a list of user commands or options, such as a menu, a prominent item in the list meets this criterion.

1. Source Code.

The “source code” for a work means the preferred form of the work for making modifications to it. “Object code” means any non-source form of a work.

A “Standard Interface” means an interface that either is an official standard defined by a recognized standards body, or, in the case of interfaces specified for a particular programming language, one that is widely used among developers working in that language.

The “System Libraries” of an executable work include anything, other than the work as a whole, that (a) is included in the normal form of packaging a Major Component, but which is not part of that Major Component, and (b) serves only to enable use of the work with that Major Component, or to implement a Standard Interface for which an implementation is available to the public in source code form. A “Major Component”, in this context, means a major essential component (kernel, window system, and so on) of the specific operating system (if any) on which the executable work runs, or a compiler used to produce the work, or an object code interpreter used to run it.

The “Corresponding Source” for a work in object code form means all the source code needed to generate, install, and (for an executable work) run the object code and to modify the work, including scripts to control those activities. However, it does not include the work's System Libraries, or general-purpose tools or generally available free programs which are used unmodified in performing those activities but which are not part of the work. For example, Corresponding Source includes interface definition files associated with source files for the work, and the source code for shared libraries and dynamically linked subprograms that the work is specifically designed to require, such as by intimate data communication or control flow between those subprograms and other parts of the work.

The Corresponding Source need not include anything that users can regenerate automatically from other parts of the Corresponding Source.

The Corresponding Source for a work in source code form is that same work.

2. Basic Permissions.

All rights granted under this License are granted for the term of copyright on the Program, and are irrevocable provided the stated conditions are met. This License explicitly affirms your unlimited permission to run the unmodified Program. The output from running a covered work is covered by this License only if the output, given its content, constitutes a covered work. This License acknowledges your rights of fair use or other equivalent, as provided by copyright law.

You may make, run and propagate covered works that you do not convey, without conditions so long as your license otherwise remains in force. You may convey covered works to others for the sole purpose of having them make modifications exclusively for you, or provide you with facilities for running those works, provided that you comply with the terms of this License in conveying all material for which you do not control copyright. Those thus making or running the covered works for you must do so exclusively on your behalf, under your direction and control, on terms that prohibit them from making any copies of your copyrighted material outside their relationship with you.

Conveying under any other circumstances is permitted solely under the conditions stated below. Sublicensing is not allowed; section 10 makes it unnecessary.

3. Protecting Users' Legal Rights From Anti-Circumvention Law.

No covered work shall be deemed part of an effective technological measure under any applicable law fulfilling obligations under article 11 of the WIPO copyright treaty adopted on 20 December 1996, or similar laws prohibiting or restricting circumvention of such measures.

When you convey a covered work, you waive any legal power to forbid circumvention of technological measures to the extent such circumvention is effected by exercising rights under this License with respect to the covered work, and you disclaim any intention to limit operation or modification of the work as a means of enforcing, against the work's users, your or third parties' legal rights to forbid circumvention of technological measures.

4. Conveying Verbatim Copies.

You may convey verbatim copies of the Program's source code as you receive it, in any medium, provided that you conspicuously and appropriately publish on each copy an appropriate copyright notice; keep intact all notices stating that this License and any non-permissive terms added in accord with section 7 apply to the code; keep intact all notices of the absence of any warranty; and give all recipients a copy of this License along with the Program.

You may charge any price or no price for each copy that you convey, and you may offer support or warranty protection for a fee.

5. Conveying Modified Source Versions.

You may convey a work based on the Program, or the modifications to produce it from the Program, in the form of source code under the terms of section 4, provided that you also meet all of these conditions:

- a) The work must carry prominent notices stating that you modified it, and giving a relevant date.
- b) The work must carry prominent notices stating that it is released under this License and any conditions added under section 7. This requirement modifies the requirement in section 4 to “keep intact all notices”.

- c) You must license the entire work, as a whole, under this License to anyone who comes into possession of a copy. This License will therefore apply, along with any applicable section 7 additional terms, to the whole of the work, and all its parts, regardless of how they are packaged. This License gives no permission to license the work in any other way, but it does not invalidate such permission if you have separately received it.
- d) If the work has interactive user interfaces, each must display Appropriate Legal Notices; however, if the Program has interactive interfaces that do not display Appropriate Legal Notices, your work need not make them do so.

A compilation of a covered work with other separate and independent works, which are not by their nature extensions of the covered work, and which are not combined with it such as to form a larger program, in or on a volume of a storage or distribution medium, is called an “aggregate” if the compilation and its resulting copyright are not used to limit the access or legal rights of the compilation's users beyond what the individual works permit. Inclusion of a covered work in an aggregate does not cause this License to apply to the other parts of the aggregate.

6. Conveying Non-Source Forms.

You may convey a covered work in object code form under the terms of sections 4 and 5, provided that you also convey the machine-readable Corresponding Source under the terms of this License, in one of these ways:

- a) Convey the object code in, or embodied in, a physical product (including a physical distribution medium), accompanied by the Corresponding Source fixed on a durable physical medium customarily used for software interchange.
- b) Convey the object code in, or embodied in, a physical product (including a physical distribution medium), accompanied by a written offer, valid for at least three years and valid for as long as you offer spare parts or customer support for that product model, to give anyone who possesses the object code either (1) a copy of the Corresponding Source for all the software in the product that is covered by this License, on a durable physical medium customarily used for software interchange, for a price no more than your reasonable cost of physically performing this conveying of source, or (2) access to copy the Corresponding Source from a network server at no charge.
- c) Convey individual copies of the object code with a copy of the written offer to provide the Corresponding Source. This alternative is allowed only occasionally and noncommercially, and only if you received the object code with such an offer, in accord with subsection 6b.
- d) Convey the object code by offering access from a designated place (gratis or for a charge), and offer equivalent access to the Corresponding Source in the same way through the same place at no further charge. You need not require recipients to copy the Corresponding Source along with the object code. If the place to copy the object code is a network server, the Corresponding Source may be on a different server (operated by you or a third party) that supports equivalent copying facilities, provided you maintain clear directions next to the object code saying where to find the Corresponding Source. Regardless of what server hosts the Corresponding Source, you remain obligated to ensure that it is available for as long as needed to satisfy these requirements.

- e) Convey the object code using peer-to-peer transmission, provided you inform other peers where the object code and Corresponding Source of the work are being offered to the general public at no charge under subsection 6d.

A separable portion of the object code, whose source code is excluded from the Corresponding Source as a System Library, need not be included in conveying the object code work.

A “User Product” is either (1) a “consumer product”, which means any tangible personal property which is normally used for personal, family, or household purposes, or (2) anything designed or sold for incorporation into a dwelling. In determining whether a product is a consumer product, doubtful cases shall be resolved in favor of coverage. For a particular product received by a particular user, “normally used” refers to a typical or common use of that class of product, regardless of the status of the particular user or of the way in which the particular user actually uses, or expects or is expected to use, the product. A product is a consumer product regardless of whether the product has substantial commercial, industrial or non-consumer uses, unless such uses represent the only significant mode of use of the product.

“Installation Information” for a User Product means any methods, procedures, authorization keys, or other information required to install and execute modified versions of a covered work in that User Product from a modified version of its Corresponding Source. The information must suffice to ensure that the continued functioning of the modified object code is in no case prevented or interfered with solely because modification has been made.

If you convey an object code work under this section in, or with, or specifically for use in, a User Product, and the conveying occurs as part of a transaction in which the right of possession and use of the User Product is transferred to the recipient in perpetuity or for a fixed term (regardless of how the transaction is characterized), the Corresponding Source conveyed under this section must be accompanied by the Installation Information. But this requirement does not apply if neither you nor any third party retains the ability to install modified object code on the User Product (for example, the work has been installed in ROM).

The requirement to provide Installation Information does not include a requirement to continue to provide support service, warranty, or updates for a work that has been modified or installed by the recipient, or for the User Product in which it has been modified or installed. Access to a network may be denied when the modification itself materially and adversely affects the operation of the network or violates the rules and protocols for communication across the network.

Corresponding Source conveyed, and Installation Information provided, in accord with this section must be in a format that is publicly documented (and with an implementation available to the public in source code form), and must require no special password or key for unpacking, reading or copying.

7. Additional Terms.

“Additional permissions” are terms that supplement the terms of this License by making exceptions from one or more of its conditions. Additional permissions that are applicable to the entire Program shall be treated as though they were included in this License, to the extent that they are

valid under applicable law. If additional permissions apply only to part of the Program, that part may be used separately under those permissions, but the entire Program remains governed by this License without regard to the additional permissions.

When you convey a copy of a covered work, you may at your option remove any additional permissions from that copy, or from any part of it. (Additional permissions may be written to require their own removal in certain cases when you modify the work.) You may place additional permissions on material, added by you to a covered work, for which you have or can give appropriate copyright permission.

Notwithstanding any other provision of this License, for material you add to a covered work, you may (if authorized by the copyright holders of that material) supplement the terms of this License with terms:

- a) Disclaiming warranty or limiting liability differently from the terms of sections 15 and 16 of this License; or
- b) Requiring preservation of specified reasonable legal notices or author attributions in that material or in the Appropriate Legal Notices displayed by works containing it; or
- c) Prohibiting misrepresentation of the origin of that material, or requiring that modified versions of such material be marked in reasonable ways as different from the original version; or
- d) Limiting the use for publicity purposes of names of licensors or authors of the material; or
- e) Declining to grant rights under trademark law for use of some trade names, trademarks, or service marks; or
- f) Requiring indemnification of licensors and authors of that material by anyone who conveys the material (or modified versions of it) with contractual assumptions of liability to the recipient, for any liability that these contractual assumptions directly impose on those licensors and authors.

All other non-permissive additional terms are considered “further restrictions” within the meaning of section 10. If the Program as you received it, or any part of it, contains a notice stating that it is governed by this License along with a term that is a further restriction, you may remove that term. If a license document contains a further restriction but permits relicensing or conveying under this License, you may add to a covered work material governed by the terms of that license document, provided that the further restriction does not survive such relicensing or conveying.

If you add terms to a covered work in accord with this section, you must place, in the relevant source files, a statement of the additional terms that apply to those files, or a notice indicating where to find the applicable terms.

Additional terms, permissive or non-permissive, may be stated in the form of a separately written license, or stated as exceptions; the above requirements apply either way.

8. Termination.

You may not propagate or modify a covered work except as expressly provided under this License. Any attempt otherwise to propagate or modify it is void, and will automatically terminate your rights under this License (including any patent licenses granted under the third paragraph of section 11).

However, if you cease all violation of this License, then your license from a particular copyright holder is reinstated (a) provisionally, unless and until the copyright holder explicitly and finally terminates your license, and (b) permanently, if the copyright holder fails to notify you of the violation by some reasonable means prior to 60 days after the cessation.

Moreover, your license from a particular copyright holder is reinstated permanently if the copyright holder notifies you of the violation by some reasonable means, this is the first time you have received notice of violation of this License (for any work) from that copyright holder, and you cure the violation prior to 30 days after your receipt of the notice.

Termination of your rights under this section does not terminate the licenses of parties who have received copies or rights from you under this License. If your rights have been terminated and not permanently reinstated, you do not qualify to receive new licenses for the same material under section 10.

9. Acceptance Not Required for Having Copies.

You are not required to accept this License in order to receive or run a copy of the Program. Ancillary propagation of a covered work occurring solely as a consequence of using peer-to-peer transmission to receive a copy likewise does not require acceptance. However, nothing other than this License grants you permission to propagate or modify any covered work. These actions infringe copyright if you do not accept this License. Therefore, by modifying or propagating a covered work, you indicate your acceptance of this License to do so.

10. Automatic Licensing of Downstream Recipients.

Each time you convey a covered work, the recipient automatically receives a license from the original licensors, to run, modify and propagate that work, subject to this License. You are not responsible for enforcing compliance by third parties with this License.

An “entity transaction” is a transaction transferring control of an organization, or substantially all assets of one, or subdividing an organization, or merging organizations. If propagation of a covered work results from an entity transaction, each party to that transaction who receives a copy of the work also receives whatever licenses to the work the party's predecessor in interest had or could give under the previous paragraph, plus a right to possession of the Corresponding Source of the work from the predecessor in interest, if the predecessor has it or can get it with reasonable efforts.

You may not impose any further restrictions on the exercise of the rights granted or affirmed under this License. For example, you may not impose a license fee, royalty, or other charge for exercise of rights granted under this License, and you may not initiate litigation (including a cross-claim or counterclaim in a lawsuit) alleging that any patent claim is infringed by making, using, selling, offering for sale, or importing the Program or any portion of it.

11. Patents.

A “contributor” is a copyright holder who authorizes use under this License of the Program or a work on which the Program is based. The work thus licensed is called the contributor's “contributor version”.

A contributor's “essential patent claims” are all patent claims owned or controlled by the contributor, whether already acquired or hereafter acquired, that would be infringed by some manner, permitted by this License, of making, using, or selling its contributor version, but do not include claims that would be infringed only as a consequence of further modification of the contributor version. For purposes of this definition, “control” includes the right to grant patent sublicenses in a manner consistent with the requirements of this License.

Each contributor grants you a non-exclusive, worldwide, royalty-free patent license under the contributor's essential patent claims, to make, use, sell, offer for sale, import and otherwise run, modify and propagate the contents of its contributor version.

In the following three paragraphs, a “patent license” is any express agreement or commitment, however denominated, not to enforce a patent (such as an express permission to practice a patent or covenant not to sue for patent infringement). To “grant” such a patent license to a party means to make such an agreement or commitment not to enforce a patent against the party.

If you convey a covered work, knowingly relying on a patent license, and the Corresponding Source of the work is not available for anyone to copy, free of charge and under the terms of this License, through a publicly available network server or other readily accessible means, then you must either (1) cause the Corresponding Source to be so available, or (2) arrange to deprive yourself of the benefit of the patent license for this particular work, or (3) arrange, in a manner consistent with the requirements of this License, to extend the patent license to downstream recipients. “Knowingly relying” means you have actual knowledge that, but for the patent license, your conveying the covered work in a country, or your recipient's use of the covered work in a country, would infringe one or more identifiable patents in that country that you have reason to believe are valid.

If, pursuant to or in connection with a single transaction or arrangement, you convey, or propagate by procuring conveyance of, a covered work, and grant a patent license to some of the parties receiving the covered work authorizing them to use, propagate, modify or convey a specific copy of the covered work, then the patent license you grant is automatically extended to all recipients of the covered work and works based on it.

A patent license is “discriminatory” if it does not include within the scope of its coverage, prohibits the exercise of, or is conditioned on the non-exercise of one or more of the rights that are specifically granted under this License. You may not convey a covered work if you are a party to an arrangement with a third party that is in the business of distributing software, under which you make payment to the third party based on the extent of your activity of conveying the work, and under which the third party grants, to any of the parties who would receive the covered work from you, a discriminatory patent license (a) in connection with copies of the covered work conveyed by you (or copies made from those copies), or (b) primarily for and in connection with specific products or compilations that contain the covered work, unless you entered into that arrangement, or that patent license was granted, prior to 28 March 2007.

Nothing in this License shall be construed as excluding or limiting any implied license or other defenses to infringement that may otherwise be available to you under applicable patent law.

12. No Surrender of Others' Freedom.

If conditions are imposed on you (whether by court order, agreement or otherwise) that contradict the conditions of this License, they do not excuse you from the conditions of this License. If you cannot convey a covered work so as to satisfy simultaneously your obligations under this License and any other pertinent obligations, then as a consequence you may not convey it at all. For example, if you agree to terms that obligate you to collect a royalty for further conveying

from those to whom you convey the Program, the only way you could satisfy both those terms and this License would be to refrain entirely from conveying the Program.

13. Use with the GNU Affero General Public License.

Notwithstanding any other provision of this License, you have permission to link or combine any covered work with a work licensed under version 3 of the GNU Affero General Public License into a single combined work, and to convey the resulting work. The terms of this License will continue to apply to the part which is the covered work, but the special requirements of the GNU Affero General Public License, section 13, concerning interaction through a network will apply to the combination as such.

14. Revised Versions of this License.

The Free Software Foundation may publish revised and/or new versions of the GNU General Public License from time to time. Such new versions will be similar in spirit to the present version, but may differ in detail to address new problems or concerns.

Each version is given a distinguishing version number. If the Program specifies that a certain numbered version of the GNU General Public License “or any later version” applies to it, you have the option of following the terms and conditions either of that numbered version or of any

later version published by the Free Software Foundation. If the Program does not specify a version number of the GNU General Public License, you may choose any version ever published by the Free Software Foundation.

If the Program specifies that a proxy can decide which future versions of the GNU General Public License can be used, that proxy's public statement of acceptance of a version permanently authorizes you to choose that version for the Program.

Later license versions may give you additional or different permissions. However, no additional obligations are imposed on any author or copyright holder as a result of your choosing to follow a later version.

15. Disclaimer of Warranty.

THERE IS NO WARRANTY FOR THE PROGRAM, TO THE EXTENT PERMITTED BY APPLICABLE LAW. EXCEPT WHEN OTHERWISE STATED IN WRITING THE COPYRIGHT HOLDERS AND/OR OTHER PARTIES PROVIDE THE PROGRAM "AS IS" WITHOUT WARRANTY OF ANY KIND, EITHER EXPRESSED OR IMPLIED, INCLUDING, BUT NOT LIMITED TO, THE IMPLIED WARRANTIES OF MERCHANTABILITY AND FITNESS FOR A PARTICULAR PURPOSE. THE ENTIRE RISK AS TO THE QUALITY AND PERFORMANCE OF THE PROGRAM IS WITH YOU. SHOULD THE PROGRAM PROVE DEFECTIVE, YOU ASSUME THE COST OF ALL NECESSARY SERVICING, REPAIR OR CORRECTION.

16. Limitation of Liability.

IN NO EVENT UNLESS REQUIRED BY APPLICABLE LAW OR AGREED TO IN WRITING WILL ANY COPYRIGHT HOLDER, OR ANY OTHER PARTY WHO MODIFIES AND/OR CONVEYS THE PROGRAM AS PERMITTED ABOVE, BE LIABLE TO YOU FOR DAMAGES, INCLUDING ANY GENERAL, SPECIAL, INCIDENTAL OR CONSEQUENTIAL DAMAGES ARISING OUT OF THE USE OR INABILITY TO USE THE PROGRAM (INCLUDING BUT NOT LIMITED TO LOSS OF DATA OR DATA BEING RENDERED INACCURATE OR LOSSES SUSTAINED BY YOU OR THIRD PARTIES OR A FAILURE OF THE PROGRAM TO OPERATE WITH ANY OTHER PROGRAMS), EVEN IF SUCH HOLDER OR OTHER PARTY HAS BEEN ADVISED OF THE POSSIBILITY OF SUCH DAMAGES.

17. Interpretation of Sections 15 and 16.

If the disclaimer of warranty and limitation of liability provided above cannot be given local legal effect according to their terms, reviewing courts shall apply local law that most closely approximates an absolute waiver of all civil liability in connection with the Program, unless a warranty or assumption of liability accompanies a copy of the Program in return for a fee.

END OF TERMS AND CONDITIONS

How to Apply These Terms to Your New Programs

If you develop a new program, and you want it to be of the greatest possible use to the public, the best way to achieve this is to make it free software which everyone can redistribute and change under these terms.

To do so, attach the following notices to the program. It is safest to attach them to the start of each source file to most effectively state the exclusion of warranty; and each file should have at least the “copyright” line and a pointer to where the full notice is found.

```
<one line to give the program's name and a brief idea of what it does.>  
Copyright (C) <year> <name of author>
```

```
This program is free software: you can redistribute it and/or modify  
it under the terms of the GNU General Public License as published by  
the Free Software Foundation, either version 3 of the License, or  
(at your option) any later version.
```

```
This program is distributed in the hope that it will be useful,  
but WITHOUT ANY WARRANTY; without even the implied warranty of  
MERCHANTABILITY or FITNESS FOR A PARTICULAR PURPOSE. See the  
GNU General Public License for more details.
```

```
You should have received a copy of the GNU General Public License  
along with this program. If not, see <https://www.gnu.org/licenses/>.
```

Also add information on how to contact you by electronic and paper mail.

If the program does terminal interaction, make it output a short notice like this when it starts in an interactive mode:

```
<program> Copyright (C) <year> <name of author>  
This program comes with ABSOLUTELY NO WARRANTY; for details type `show  
w'.  
This is free software, and you are welcome to redistribute it  
under certain conditions; type `show c' for details.
```

The hypothetical commands `show w' and `show c' should show the appropriate parts of the General Public License. Of course, your program's commands might be different; for a GUI interface, you would use an “about box”.

You should also get your employer (if you work as a programmer) or school, if any, to sign a “copyright disclaimer” for the program, if necessary. For more information on this, and how to apply and follow the GNU GPL, see [<https://www.gnu.org/licenses/>](https://www.gnu.org/licenses/).

The GNU General Public License does not permit incorporating your program into proprietary programs. If your program is a subroutine library, you may consider it more useful to permit linking proprietary applications with the library. If this is what you want to do, use the GNU Lesser General Public License instead of this License. But first, please read [<https://www.gnu.org/licenses/why-not-lgpl.html>](https://www.gnu.org/licenses/why-not-lgpl.html).

LZE GmbH

Managing Director: Dr. Christian Forster
Frauenweiherstr. 15
91058 Erlangen

Contact
Phone: +49 9131 92894 80
E-Mail: kontakt[at]lze-innovation.de

Sales tax identification number according to § 27 a sales tax law: DE316405780
Commercial register number: HRB 16647
Competent local court: Fürth



*** End of document ***