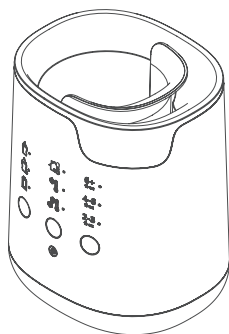




*all-in-one
advanced bottle and pouch warmer*

INSTRUCTIONS FOR USE



Please read and keep these instructions

0423224



Mayborn (UK) Limited,
Balliol Business Park,
Newcastle upon Tyne,
NE12 8EW, UK

Copyright © Mayborn (UK) Limited 2018.
Made in China.
Model number: 1149. Voltage: 220-240V~ 50/60Hz 500W.



Any questions?
Visit our website
tommeetippee.com



IMPORTANT WARNINGS!

These instructions can also be found at www.tommeetippee.com

Keep this instruction sheet for future reference as it includes important information.

This appliance is intended for household use only. Do not use outdoors. Before plugging in the bottle and pouch warmer for the first time ensure that the voltage is compatible with your electricity supply by checking the label on the base of the unit. Ensure water has been added to the unit before switching the unit on. Do not immerse in water. To protect against fire, electric shock and injury to persons do not immerse cord, plugs or other parts of the unit in water or other liquid. Misuse of the product may result in the risk of fire, electric shock and/or personal injury. This appliance can be used by persons aged 14 years and above if they have been given supervision or instruction concerning use of the appliance in a safe way and understand the hazards involved. Cleaning and user maintenance shall not be made by children unless they are aged 14 years and above and supervised. Keep this appliance and its cord out of the reach of children. This appliance is not intended for use by persons (including children) with reduced physical, sensory or mental capabilities, or lack of experience and knowledge, unless they have been given supervision or instruction concerning the use of the appliance by a person responsible for their safety. Children do not understand the dangers associated with operating electrical appliances. Never allow children to use this appliance. The heating element surface is subject to residual heat after use. Do not touch hot surfaces use handles and knobs. Ensure that the heating guidelines are

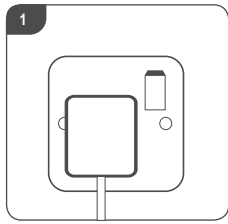
followed to ensure that the food is not heated for too long. For your child's safety – Always check milk temperature before feeding by testing on a sensitive part of your skin. Do not operate any appliance with a damaged cord or plug or after the appliance malfunctions or has been damaged in any manner. If the supply cord is damaged it must be changed by a qualified person in order to avoid a hazard. Always use on a dry flat heat resistant kitchen surface. Do not move appliance when in use. Do not let the cord hang over edge of kitchen work surface or touch hot surfaces. The product has been fitted with a cord wind on the base of the unit to allow you to adjust the length of the cord safely. It is recommended that the cord be kept as short as possible. Do not use any accessories other than those supplied with this appliance. The cord must exit the cable tidy using the exit recess. If the cord is correctly placed in the tidy the product will sit level. Do not start using the product if it is not sitting level. Regularly check the cord and plug for signs of damage, if visible remove from use immediately. Lift cradle must be used when operating the unit. **The water inside the unit gets very hot and can cause burns, please take care when removing items from the bottle and pouch warmer.**

1. SET UP

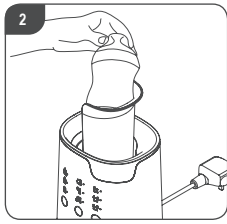
Please refer to instructions leaflet before use and remember to clean and descale your unit regularly. It is recommended to run one cycle of the unit before use. Please refer to the instructions in the Usage section.

2. USAGE

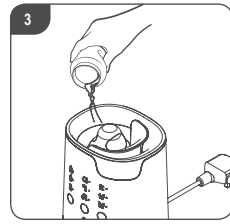
For your child's safety always check milk temperature before feeding by testing on a sensitive part of the skin.



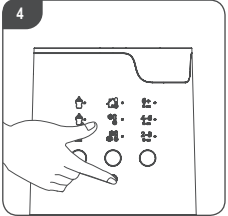
Place the unit on a clean, dry kitchen work surface. Plug unit into the mains power supply and switch on.



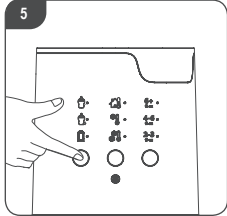
Lift the easy lift cradle and place in the bottle or pouch. For hygiene we recommend leaving the hood on the teat.



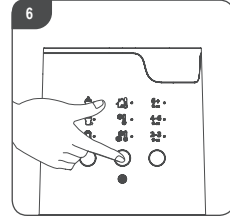
Place the easy lift cradle into the unit and add 250ml/9fl-oz of water using your Tommee Tippee bottle.



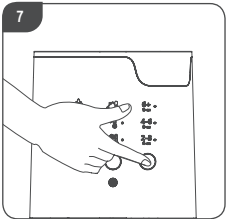
Press power button to turn on the unit. The LED will flash and beep once to show the unit is in standby mode.



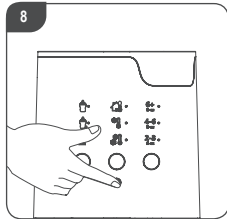
Select bottle type - press until the LED is adjacent to your requirement.



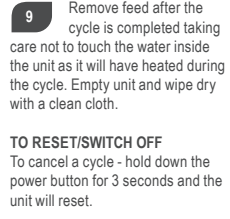
Select starting temperature - press until the LED is adjacent to the correct temperature of feed.



Select volume of feed - press until the LED is adjacent to the amount of feed to be warmed.



Press the power button, the unit will beep once to show the cycle has started. When the cycle finishes the unit will beep 3 times, and LEDs will keep flashing while the feed is still warm. Pressing any button will stop the LED flashing, or it will automatically switch off after 45mins.



Remove feed after the cycle is completed taking care not to touch the water inside the unit as it will have heated during the cycle. Empty unit and wipe dry with a clean cloth.

TO RESET/SWITCH OFF

To cancel a cycle - hold down the power button for 3 seconds and the unit will reset.

3. CLEANING

Unplug and allow to cool before cleaning. After each use pour away remaining water from the bottle and pouch warmer by tipping the bottle and pouch warmer sideways over a sink and wipe clean with a damp cloth only. Do not clean with abrasive cleaners or allow to come into contact with solvents or harsh chemicals, damage could result.

DE-SCALING

The frequency of de-scaling should be as follows:

Hard water - 7 days

Medium - 14 days

Soft - 21 days

You can find out your water quality via your water provider.

After each use allow to cool before pouring away remaining water from the bottle and pouch warmer by tipping the bottle and pouch warmer sideways over a sink and wipe with a damp cloth only. Unplug the bottle and pouch warmer and allow to cool before cleaning. A build up of limescale can negatively affect the performance of the bottle and pouch warmer. We recommend carrying out the descaling process as per above frequency guidelines to ensure the bottle and pouch warmer continues to work efficiently. Living in a hard water area can produce limescale quicker than other areas therefore descaling is required sooner. Use a descaler that is suitable for use with stainless steel and use as per the manufacturer's guidelines. Alternatively you can use white vinegar to descale your bottle and pouch warmer, please use as per manufacturer's guidelines. Once you have descaled then follow instructions under set up to perform a final cleaning cycle. You may need to repeat the process if you find that limescale is still present. DO NOT use metal objects or scourers to clean your bottle and pouch warmer. DO NOT use bleach to clean the bottle and pouch warmer. DO NOT use abrasive or anti-bacterial materials.

INFORMATION ON THE DISPOSAL FOR WASTE ELECTRICAL & ELECTRONIC EQUIPMENT (WEEE)

This symbol on the products and accompanying documents means that used electrical and electronic products should not be mixed with general household waste. For proper disposal for treatment, recovery and recycling, please take these products to designated collection points where they will be accepted on a free of charge basis. In some countries you may be able to return your products to your local retailer upon the purchase of a new product.

Disposing of this product correctly will help you save valuable resources and prevent any possible effects on human health and the environment, which could otherwise arise from inappropriate waste handling. Please contact your local authority for further details of your nearest collection point for WEEE.

Penalties may be applicable for the incorrect disposal of this product in accordance with national legislation.

The product is fitted with a BS 1363 mains plug containing a fuse. If it ever becomes necessary to replace the fuse, only use fuses that are marked BS 1362, and rated at 13A. In the unlikely event that this plug is not suitable for the sockets in your home, it should be removed and a suitable plug fitted as follows:

The wires of the mains lead are coloured in accordance with the following code:

GREEN AND YELLOW - EARTH

BLUE - NEUTRAL

BROWN - LIVE

As these colours may not correspond with the coloured markings sometimes used to identify the terminals in the plug, connect as follows.

The wire coloured GREEN AND YELLOW must be connected to the terminal marked E or by the earth symbol or coloured GREEN or GREEN AND YELLOW. The wire coloured BLUE must be connected to the terminal marked N or coloured BLACK. The wire coloured BROWN must be connected to the terminal marked L or coloured RED.

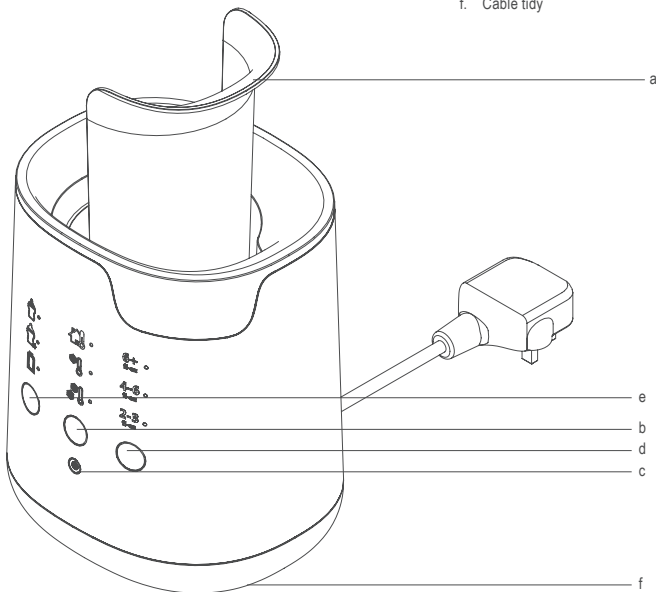
If you are in any doubt about how to wire a plug or replace a fuse safely, consult a qualified electrician.



BOTTLE AND POUCH WARMER

- Replace bottle and pouch warmer water after every use
- If mains power is disconnected unit will reset
- Unit does not maintain temperature of feed
- Unit will not allow you to change the selection whilst in operation
- Do not store a bottle or pouch in the unit

- Lift cradle
- Temperature selection
- Power button
- Volume or feed selection
- Pouch or bottle type selection
- Cable tidy

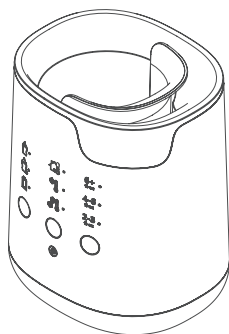


BOTTLE TYPE	TEMPERATURE	VOLUME OF FEED
Plastic bottle	Room temp	2-3 fl-oz <100ml
Glass bottle	Fridge	4-6 fl-oz <200ml
Pouch	Freezer	6+ fl-oz >200ml



奶瓶及儲奶袋加熱器

產品使用說明



請仔細閱讀並保留此重要的使用說明

042322438



Mayborn (UK) Limited,
Balliol Business Park,
Newcastle upon Tyne,
NE12 8EW, UK

Copyright © Mayborn (UK) Limited 2018.
Made in China.
Model number: 1149. Voltage: 220-240V~ 50/60Hz 500W.



Any questions?
Visit our website
tommeetippee.com



重要警告

您亦可於 www.tommeetippee.com 找到此說明書。
此說明書內有重要資訊，請小心保存，以作日後參考之用。

本產品只供家居使用，請勿在戶外使用。將產品接上電源前，請檢查您家居的電壓是否與顯示在加熱器底部的電壓一致。開始運作前，請確認已將清水倒入加熱器內。請勿把產品浸於水中。為免造成火災、觸電及危害他人，請勿把電線、插頭及加熱器浸於水或任何液體中。不適當使用本產品，會引致火災、觸電及受傷等危險。

此產品可供14歲或以上的人仕使用，但須曾在指導及監督下明白如何安全使用本產品及了解有關風險。清潔及除垢工序不應由兒童進行，除非他們已滿14歲或以上，並在成人監督下才可進行清潔保養的工序。請確保本產品及電線遠離兒童。本產品不適合生理、感官或精神有殘障人仕、或缺乏經驗及知識（包括兒童）的人仕使用，除非有負責他們安全的人員，從旁監督或指導下才可使用本產品。

兒童未能了解有關操作電器的風險。切勿讓兒童使用本產品。

使用後，產品的發熱部份會有餘熱。不要觸摸變熱的表面。請依照加熱指引加熱，避免過度加熱。為您孩子的安全 - 餵食前，請先檢查食物的溫度，才可餵給寶寶。如發現產品的電線或插頭有損壞，或產品發生故障，應立即停止使用。電線如有損壞，應立即聯絡合資格的電器技師維修或更換，以免發生危險。請在耐熱的平面上使用本產品。當產品運作時，請不要

移動產品。請勿將電線懸掛在廚房工作檯面的邊緣或接觸高溫表面。本產品的電線可繞在底部，方便安全地調校電線的長度。我們建議電線的長度應保持越短越好。

除了本產品提供的配件外，請勿使用其他配件。電源線必須正確地扣於產品底部的凹槽位置，以確保產品能保持水平。如產品未能保持水平，請勿開始運作本產品。請定期檢查電線及插頭是否有損壞跡象，如有發現，應立即停止使用。

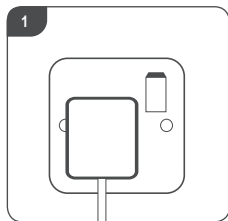
從加熱器中取出物品時要小心，加熱器內的水會變得非常熱，可能會導致灼傷。

1. 設定

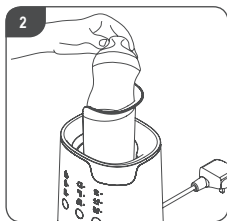
使用前，請細閱說明書上的指示，並緊記定期清潔及為加熱器除垢。使用前，建議先運作一次。請參閱使用說明。

使用說明

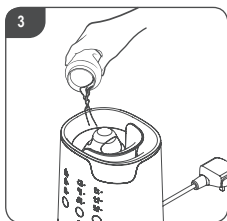
為您孩子的安全 - 餵食前，請先檢查食物的溫度，才可餵給寶貴。



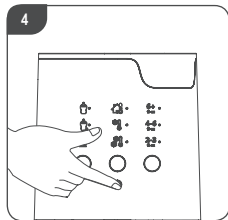
1. 將加熱器放在清潔、乾爽的平面上。將插頭插入主電源並打開。



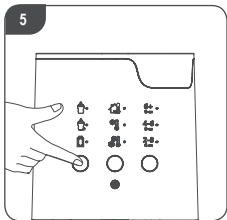
2. 提起籃子，把奶瓶或儲奶袋放在籃子裡。基於衛生原因，建議用奶瓶蓋蓋著奶咀。



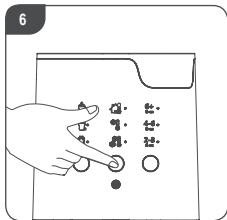
3. 將籃子放入加熱器內，用 Tommee Tippee 奶瓶量度 250 毫升/9 安士清水倒入加熱器內。



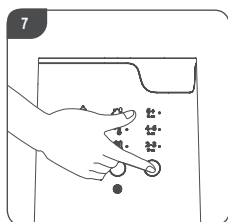
4. 按下電源按鈕啟動加熱器。當指示燈閃亮著並發出“嗶”一聲，即表示加熱器已在待機模式。



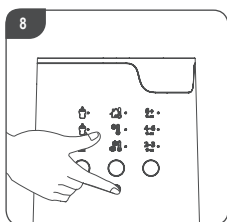
5. 選擇奶瓶種類 - 按動容器設定，直至指示燈在你所選擇的容器旁邊亮著。



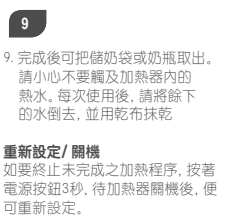
6. 選擇溫度 - 按動溫度設定，直至指示燈在你所選擇的溫度旁邊亮著。



7. 選擇容量 - 按動容量設定，直至指示燈在你所選擇的容量旁邊亮著。



8. 按下電源按鈕 - 加熱器會發出“嗶”一聲，表示已開始加熱。當整個加熱過程完成後，加熱器會發出3響“嗶”的響聲，同時所有LED燈都會閃動。如按下任何按鈕，所有LED燈會停止閃動，或在45分鐘後，加熱器會自動關上。



9. 完成後可把儲奶袋或奶瓶取出。請小心不要觸及加熱器內的熱水。每次使用後，請將餘下的水倒去，並用乾布抹乾。

重新設定/ 開機

如要終止未完成之加熱程序，按著電源按鈕3秒。待加熱器關機後，便可重新設定。

3. 清洗

清洗前，請先拔除電源插頭並待加熱器冷卻。將剩餘的水倒去並用乾淨的布輕輕抹乾。請勿用具磨損性之清潔劑清洗，或接觸帶刺激性的溶劑及化學品，因產品可能會受損。

除垢

除垢的頻率及次數應如下：

硬水地區：每隔7日一次

中性水地區：每隔14日一次

軟水地區：每隔21日一次

請向您的食水供應商了解您所屬地區的水質。每次使用後，請待加熱器冷卻後才把剩餘的水倒去並用乾淨的布輕輕抹乾。進行除垢前，請先拔除電源插頭並待加熱器冷卻。積聚的水垢會影響加熱器的表現。我們建議根據以上指引，定期為加熱器進行除垢，以確保加熱器能有效地運作。如生活在一些硬水地區，水垢會更快積聚，所以可能需要更頻密的進行除垢工作。請購買適合不銹鋼使用的除垢劑並依照生產商的使用說明除垢。或可使用白醋為您的加熱器除垢。使用時，請依照生產商的說明使用。完成除垢後，請參考“設定”一欄的指引，將加熱器運作一次。如果發現未能完全除去水垢，可能需要重複除垢的程序。請勿使用金屬洗刷用品刷洗您的加熱器。請勿使用漂白劑或化學消毒劑/藥片清洗加熱器。請勿使用具磨損性或抗菌功能的清潔劑。

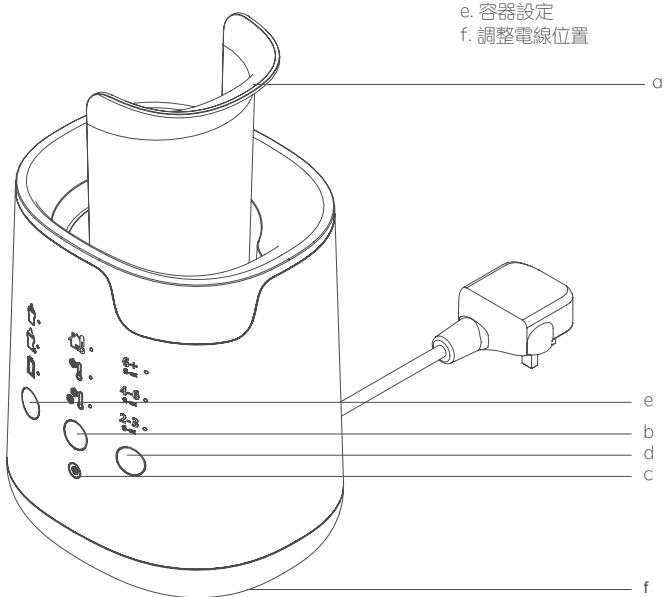
關於棄置電器及電子設備 (WEEE)

這個在產品及附帶文件上的符號代表舊的電子及電器產品不應跟其他一般生活垃圾混合。要妥善處理，回收和循環再造，請把此產品送到指定的收集站。有一些國家，當你購買新電器時，可以把舊電器退回零售商。正確棄置此產品可幫助保護寶貴的資源及防止影響人類健康及環境。請聯絡當地的政府詢問關於就近的廢棄電器及電子設備(WEEE)的收集站。在某些國家，如不正確棄置電器及電子產品有可能會被罰款。請聯絡當地政府，查詢有關詳情。此產品的電源插頭是BS 1363配有保險絲。如果必需更換保險絲，只可使用標明BS1362及13A的保險絲。

奶瓶及儲奶袋加熱器

- 每次使用後，請更換加熱器內的清水。
- 如主電源被切斷，加熱器需要重新設定。
- 本產品不能保持食物溫度。
- 當加熱器開始運作後，所有設定將不能更改。
- 切勿將奶瓶或儲奶袋儲放於加熱器內。

- 籃子
- 溫度設定
- 電源按鈕
- 容量設定
- 容器設定
- 調整電線位置



如插頭不適合你的插座，請先移除及安裝合適的插頭如下：

接線的顏色有以下不同的代碼：

綠色及黃色 - 地線

藍色 - 水線

棕色 - 火線

由於接線顏色可能會與插頭上的顏色標示不一樣，因此請根據以下指示連接插頭。

綠色及黃色的電線必須連接插頭上標示為“E”/地球符號/綠色/綠色及黃色的位置。而藍色的電線必須連接插頭上標示為“N”/黑色的位置。棕色的電線必須連接插頭上標示為“L”/紅色的位置。如果你對連接插頭或對更換保險絲有任何疑問，請諮詢合資格的電器技師。



奶瓶種類	溫度	容量
塑膠奶瓶	室溫	2-3安士 <100毫升
玻璃奶瓶	冰箱	4-6安士 <200毫升
儲奶袋	冷凍	6安士以上 >200毫升