



ROLL-A-RAMP®

# Modular Ramp System Guide



*Where Strength & Flexibility Meet*

1816 4th Ave NW, Unit C  
West Fargo, ND 58078  
Toll-free 1-866-883-4722

ROLL-A-RAMP®

1-866-883-4722

## TABLE OF CONTENTS

Unpacking .....	pg. 3
Connecting Ramp Sections .....	pg. 4
Setting up Ramp .....	pg. 5
Installation of Ramp Supports .....	pg. 6
Handrail Kit assembly .....	pg. 7
Platform Kit assembly .....	pg. 8-10
Platform Reinforcement Kit assembly .....	pg. 11-12*

*\*for platforms at 30" or higher*

ROLL-A-RAMP®

1-866-883-4722

## Receiving and Unpacking

Congratulations on the purchase of your Roll-A-Ramp® Modular Ramp System! We are confident you will enjoy the benefits it will provide.

The system has been designed to offer a straightforward set up process. **Separate instructions have also been included in the box with your order for each of the various components of the system.** Here are a few tips on how to put together and set up your new ramp system, and to familiarize yourself with the different parts you've received.

Your order may contain all or some of the components listed below, depending on what you ordered. Items may be packaged and shipped in separate boxes, or boxed and come on a pallet. Start by checking the contents of the boxes with the packing list to ensure all components are present:

- Ramp
- Quick-Connect Pins (included in plastic bag with Owner Manual)
- Ramp Supports (included with ramps of 11 feet and longer)
- Ramp Handrails Kits (if ordered)
- Platform Kit (if ordered)

⇒ Ramps are packaged in boxes which are marked for the contents of each box. Ramps may come complete packed in one box, or in multiple boxes if longer.

For example, ramps that are shipped in more than one section will be marked, "Box 1 of 3 Ramp Upper", "Ramp box 2 of 3 Middle", "Ramp box 3 of 3 Lower". Ramp sections are to be connected together to create the complete ramp by using the Quick-Connect Pins (Page 4—Connecting Ramp)

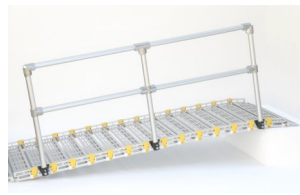
⇒ **Quick-Connect Pins** will be found inside the bag containing the Owner Manual.

⇒ **Support Stands** may be packed their own box or in a ramp box and labeled.

⇒ **Handrail Kits** are packaged in boxes and labeled for contents, i.e. 4' Handrail Kit, etc.

⇒ **Platform Kits** are shipped on a pallet and include the components to assemble.

Remove the ramp and other accessories from the boxes and separate by type, i.e. Handrails Kits, Platform Kit, Support Stands to make it easier to identify and put together.



ROLL-A-RAMP®

1-866-883-4722

## STEP 1: CONNECTING RAMP SECTIONS TOGETHER

Your ramp may have come as a complete ramp in one piece. It may ship in two or more ramp sections that need to be connected together to create the full ramp if it is a longer ramp. If the ramp is in two sections the boxes will be labeled as the “Ramp Upper” and “Ramp Lower” ends. If there are three sections it will be labeled as Upper/Middle/Lower.

- The connecting together procedure is done by connecting the different ramp sections together. This is done using the Quick-Connect Pins, or it may also be done using the bolts/nuts/yellow covers provided in the Owner Manual bag. *Using the pins to connect sections requires no tools, and allows user to quickly divide ramp for takedown/storage.*

### CONNECTING RAMP SECTIONS TOGETHER

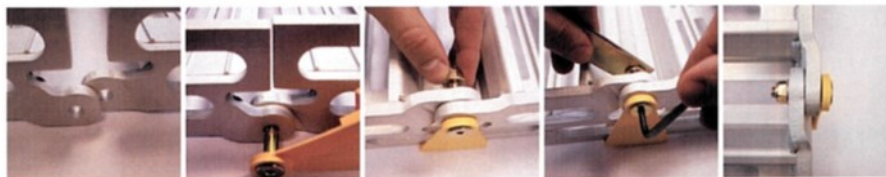
- 1) With ramp upside down, align the sections to be connected by lining up the holes in the end of each sections with each other. There are two holes, one on each side of the ramp link.
  - Ramp may also be placed on its side when lining up holes in the links and inserting pin. Repeat for other side of ramp by turning ramp over to access the other side of the ramp.
- 2) Repeat procedure to connect all ramp sections together. Lay ramp on ground.



Connect using the push-button Quick-Connect Pins included in the Owner Manual bag

Connect ramp sections using the bolts/nuts/covers and tools provided in the Owner Manual bag

OR



**NOTE:** Ramp sections must be lined up straight with each other or pins will be difficult to insert.

ROLL-A-RAMP®

1-866-883-4722

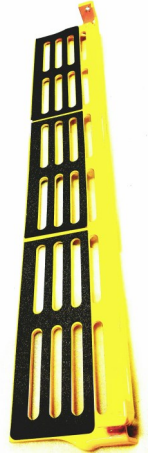
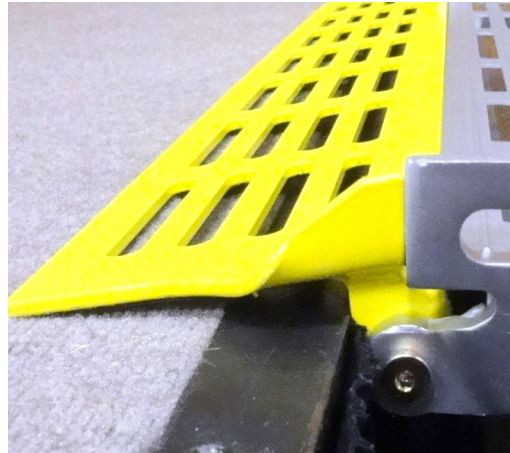
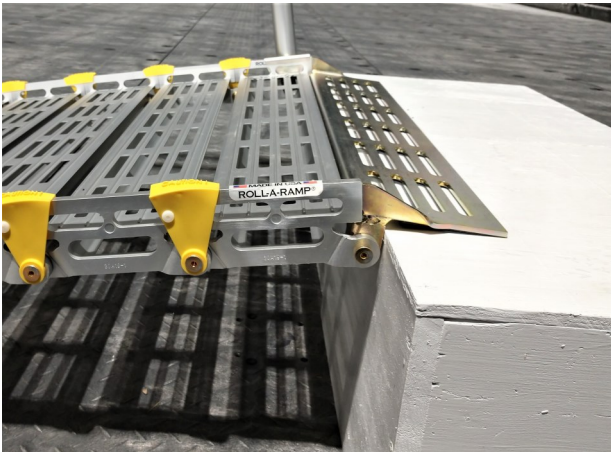
## STEP 2: SETTING UP RAMP ONTO YOUR LANDING SURFACE

Once your ramp sections have been connected together to form a complete length ramp, you may set it up on the landing surface.

The upper end of the ramp has a steel landing plate designed to rest on the landing securing the ramp in place. (**NOTE:** *If you ordered a platform kit this upper plate will not be included with your order. Yours will have a different upper end plate shown on the bottom of the page*)

### PLACEMENT OF THE LOAD-BEARING PLATE (landing plate):

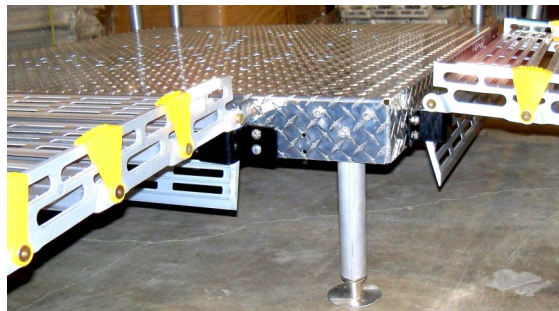
- Lift upper end of ramp and place the upper landing plate so it butts up against the upper landing and onto the top surface. In addition, there is rubber matting on the plate's underside to keep the ramp in place firmly and securely.



### **IMPORTANT NOTE FOR PLATFORM ORDERS!**

**If you received a platform with your order your ramp will not have this Load-Bearing Plate on the ramp.**

Your ramp will have a Standard Approach Plate on the upper end, that inserts into the ramp brackets that mount onto the platform. See below example for setting ramp up to platform.



ROLL-A-RAMP®

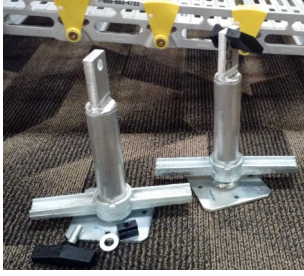
1-866-883-4722

### STEP 3: INSTALLING RAMP SUPPORT STANDS ONTO RAMP

Ramp Supports have been included with your ramp system if the ramp is a minimum of 11 feet in length. Supports come as a pair, and are attached to the sides of the ramp without the need for tools.

Supports:

- 1.5" T-Bolt
- 1/2" T-Nut
- Washers



Position stands in the center of the ramp along the sides. Line up hole in stand with lower slot in ramp link.

### STAND INSTALLATION TO RAMP

\* For ramp lengths up to 17 feet, position one pair of stands at the center point on the ramp. On ramps 18 feet and longer, you may have received two pair of supports. In this case, evenly space stands along the ramp (about 6' spacing between stands).

2. With stand in position place a T—Nut into the lower slot from the underside of the ramp. Hold in place with your hand.

1. Use a 1.5" T-Bolt and pass through hole in stand and thread into T—Nut on underside of ramp. Tighten securely.

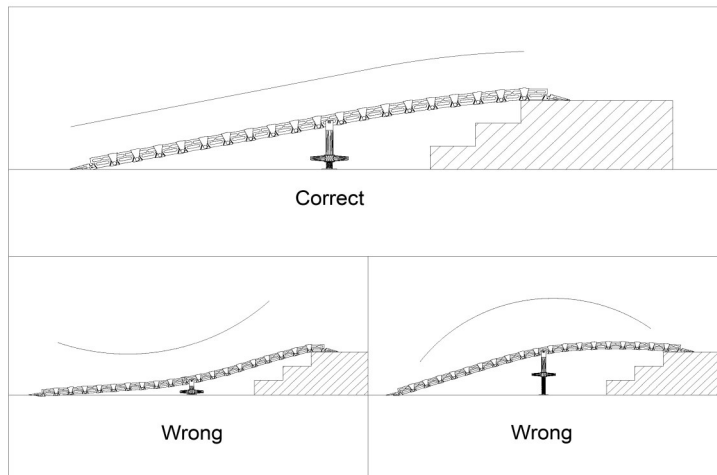


*NOTE: Be sure stands are both on the same link on opposite sides.*

### ADJUSTING STAND HEIGHT

1. Raise the stand by turning the adjustment lever clockwise (to the right). Raise support so the ramp appears straight and does not sag.

*NOTE: Stand back away from the ramp when determining this. You may need to readjust adjust the stand height until ramp appears straight when looking at from the side.*



## STEP 4: HANDRAIL KIT ASSEMBLY

Once the ramp has been setup into place, the handrails can be installed onto the ramp. If your system came with ramp handrails, it is necessary to pre-assemble them prior to putting onto the ramp.

- Kits come with rail tubes and tube connectors. Also included is a 5/16" Hex Key wrench for assembly, and hook-on handrail brackets that attach to the sides of the ramp.
- Please follow the *HANDRAIL ASSEMBLY INSTRUCTIONS* included with the Handrails Kits part of your order. They are not included in this section due to there being various sizes available.

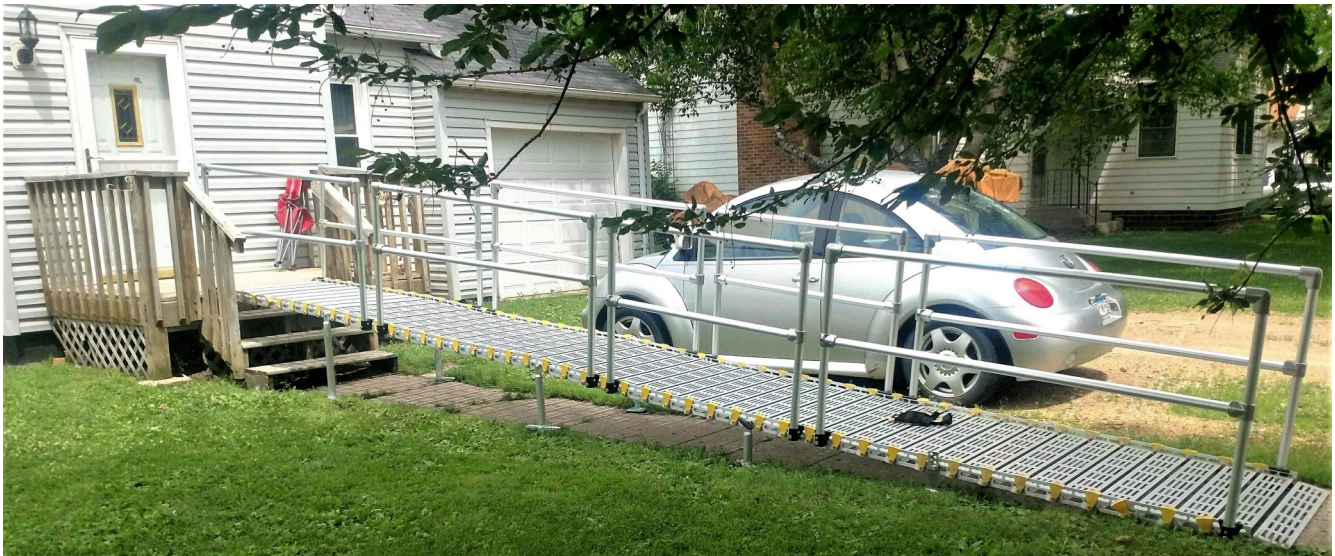


All Handrails Kits are shipped with a 5/16" Hex Allen Key for use in handrail assembly. The installation instructions included with your order detail the steps on how to assemble the rail tubes and connectors together.



Instructions will also demonstrate how to attach the handrail brackets to the ramp. Handrails are inserted into the brackets once they have been assembled, and the handrail brackets have been attached to the ramp. Please refer to the *Handrails Instructions* included with the Handrails Kit boxes.

*NOTE: Handrail brackets do not require tools to attach to ramp, and include the bolts and nuts needed to secure brackets to ramp.*



ROLL-A-RAMP®

1-866-883-4722

## STEP 5: PLATFORM KIT ASSEMBLY (with handrails)

If you ordered a platform kit with your system it will need to be assembled prior to using with the ramp. The following instructions demonstrate how to attach the components to the platform as well as the platform handrails. *Platform Handrails instructions will be included with the Handrails Kits.*

(Platform Handrail Instructions are included with the Handrail hardware)

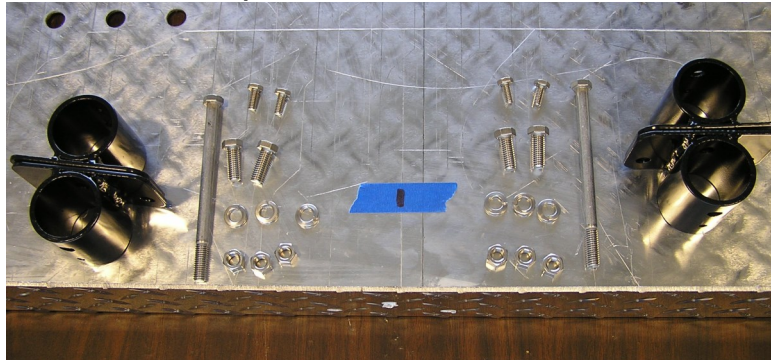
**IMPORTANT NOTE:** If your platform is 30" or higher the *Reinforcement Rails Kit* should be installed before starting to assemble the platform. Refer to page 11 for the installation instructions.

**\*\*Refer to Platform Layout Drawing on page 10 BEFORE beginning Platform assembly\*\***

Identify all hardware needed for each side of platform:

Side 1:

- 4 – Platform Brackets
- 2 – 3/8" x 5 1/2" Hex Bolt
- 4 – 3/8" x 1" Hex Bolt
- 6 – 3/8" Lock Washers
- 6 – 3/8" Nuts
- 4 – 1/4" x 3/8" Hex Bolt  
(Set Screws)



Side 2:

- 2 – Platform Brackets
- 2 – 3/8" x 3" Hex Bolt
- 4 – 3/8" x 1" Hex Bolt
- 6 – 3/8" Lock Washers
- 6 – 3/8" Nuts
- 2 – 1/4" x 3/8" Hex Bolt  
(Set Screws)



Side 3:

- 2 – Platform Brackets
- 2 – 3/8" x 3" Hex Bolt
- 4 – 3/8" x 1" Hex Bolt
- 6 – 3/8" Lock Washers
- 6 – 3/8" Nuts
- 2 – 1/4" x 3/8" Hex Bolt
- 1 pr – Seg Mount Bkts



(Side 4: EMPTY)

ROLL-A-RAMP®

1-866-883-4722



## PLATFORM KIT ASSEMBLY (continued)

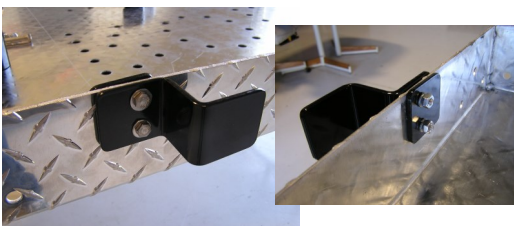
1. Start platform assembly with the platform upside down with the #1 side towards you. **(Refer to drawing at bottom of instructions for reference.)**
2. Starting in the right hand corner, place one bracket on the inside and one on the outside and insert the 1" x 3/8" bolts through the mounting holes on the plate of both the brackets and secure with the 3/8" lock washer and 3/8" nut.
3. **Install leg into the inside bracket. Use the 5 1/2" bolt through the hole in the leg tube through both brackets.** Secure from the inside of the platform with the 3/8" lock washer and 3/8" nut. Tighten securely.
4. Insert 1/4" x 3/8" bolt into set screw hole on the bracket. This is used to tighten the hand-rail tube in the bracket.
5. Repeat on left hand corner. **NO CENTER MOUNTING HOLES WILL BE USED.**



6. On side 2, install 2 brackets on the outside of the platform with the 3" & 1" Bolts. Secure with lock washers and nuts and tighten securely. Insert 1/4" x 3/8" bolt into set screw holes.



7. On side 3, install remaining 2 brackets on the inside of the platform. Install with 3" & 1" bolts and secure with lock washers and nuts. (Install legs at this time into the bracket securing in place with the same bolt.) Securely tighten and insert 1/4" x 3/8" set screw.
8. Side 3, install the first set of Seg Mount Brackets (used to slip the end plate on the ramp into). Locate mounting holes on left and right hand ends of side 3 of the platform. Set the bracket on the outside of the platform and place the square backing plate on the inside of platform. Insert 1/4" x 1" bolts with flat washers on outside and secure from the back with the lock washer and nut. Be sure that bracket is level and tighten securely.



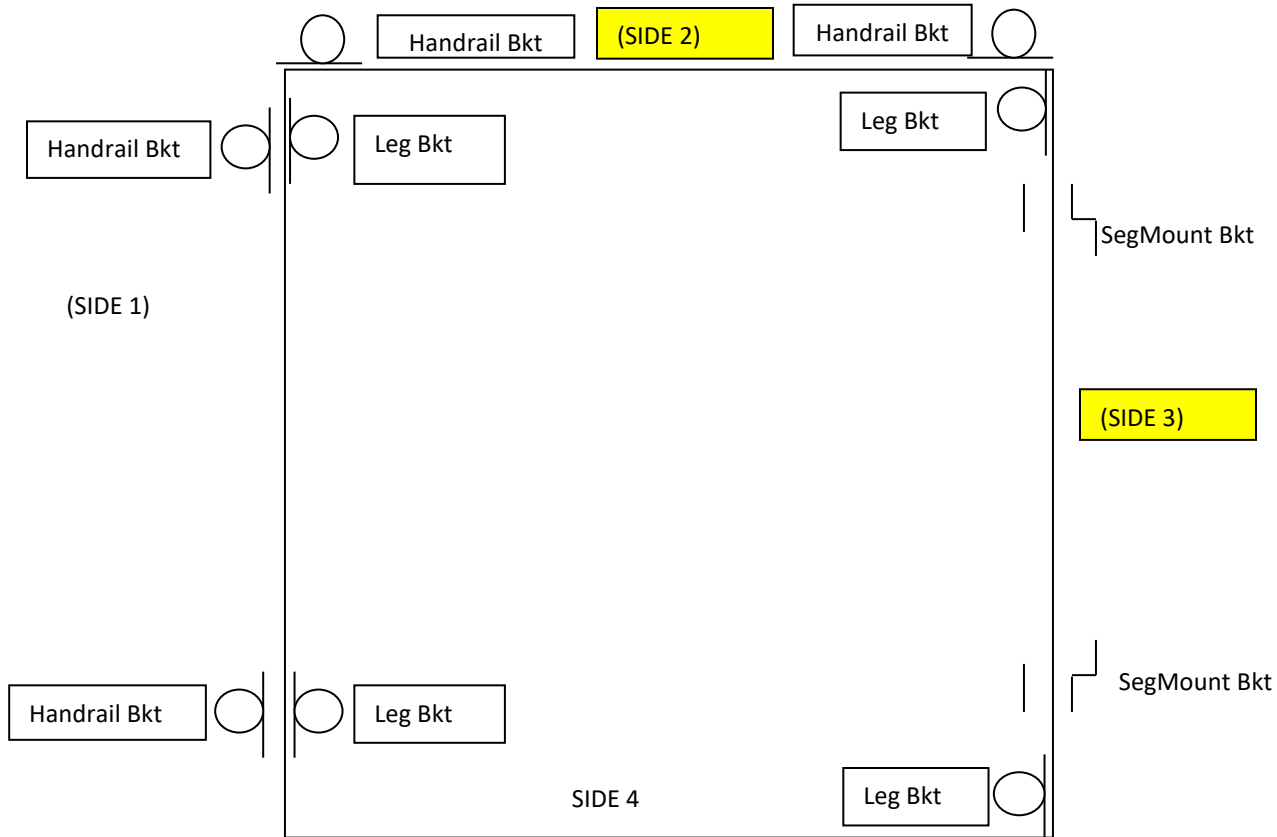
ROLL-A-RAMP®

1-866-883-4722

## PLATFORM KIT ASSEMBLY (continued)

- On side 4, install the remaining set of Seg Mount Brackets in the same way as you did on side 3. **(This is done only if you are using two ramps).**
- Install the upper platform leg tube with the hole in it into the leg brackets using the hardware included.
- Finish by lifting the platform over the bottom part of the legs (that have the adjustment lever), and inserting the platform handrails. Tighten the 1/4" set screw on brackets to secure handrails in the bracket.

### PLATFORM LEG BRACKET & HANDRAIL BRACKET LOCATIONS



#### PARTS LIST FOR PF48 or PF60 PLATFORM W/HANDRAILS

- |   |                                     |
|---|-------------------------------------|
| 1 – Platform (PF1-48 or PF1-60)   | 1 Pr – Seg Mount Brackets (3150-SS) |
| 4 – PF Legs –(made to required height)  | 4 – 1/4" x 1" Hex Bolt stainless    |
| 8 – Platform Brackets (PFLB-1000)   | 4 – 1/4" Flat Washer                |
| 2 – 3/8" x 5 1/2" Hex head bolt stainless                                     | 4 – 1/4" Lock Washer                |
| 4 – 3/8" x 3" Hex Bolt stainless  | 4 – 1/4" Nut                        |
| 12 – 3/8" x 1" Hex Bolt stainless   |                                     |
| 18 – 3/8" Lock Washer   |                                     |
| 18 – 3/8" Nuts  |                                     |
| 8 – 1/4" x 3/8" Hex Bolt stainless (Set Screws to secure Handrail in Bracket) |                                     |

ROLL-A-RAMP®

1-866-883-4722

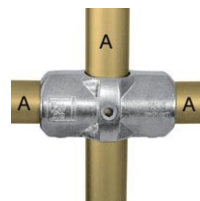
## PLATFORM REINFORCEMENT KIT (for platform heights over 30" tall)

### 4' x 4' Platforms (122cm x 122cm):

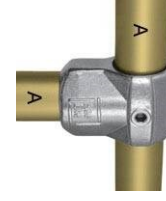
#### Parts List:

- (4) 1 ¼" Single T-Fittings
- (1) 1 ¼" Two-Socket Cross Fitting
- (1) 60" Main Cross Rail Tube
- (2) 29" Secondary Cross Tubes

Assembles to 4' x 4' Platform legs



2-Socket Cross Fitting



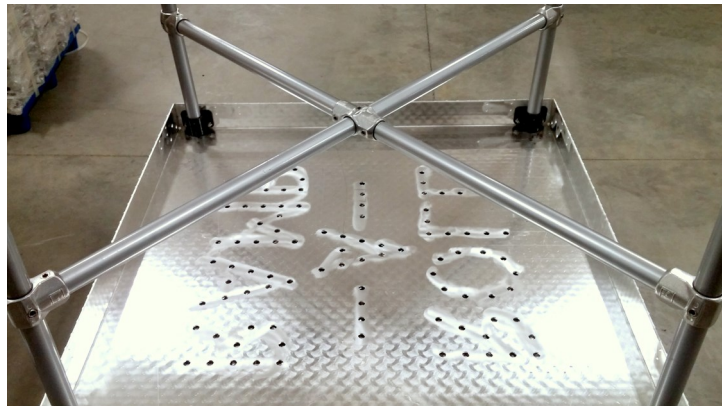
Single T Fitting

Tools Needed: (1) 5/16" Hex Key included

Assembly: Start by identifying all the parts needed for this assembly.

**IMPORTANT:** Reinforcement tubes need to be put onto the platform leg tubes before securing the legs into the platform brackets.

1. Slide a Single T-Fitting onto each of the four platform legs and locate them with the center of the bracket at the midway point of the legs. Taking note of the orientation of mounting holes, slightly tighten connector set screw fittings to the legs with the 5/16" Hex Key. Do NOT fully tighten to allow for adjustment in following assembly steps.
2. Attach the 1 ¼" 2-Socket Cross fitting in the center of the 60" Main Cross Rail and slightly tighten.
3. Insert a 29" Secondary Cross Rail into each side of the Two Socket Cross Fitting. Tighten slightly.
4. Attach Platform legs to ends of the Cross Rails.
5. On the platform, use the 1" bolts supplied to install the platform leg brackets.
6. Insert Legs into platform leg brackets (on platform) with reinforcement cross rails attached and tighten all tube connectors with the 5/16" Allen Hex Key. Finish assembly of platform by referring to the *Platform Assembly Instructions*.



ROLL-A-RAMP®

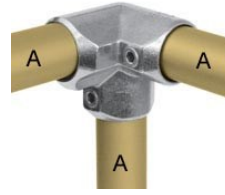
1-866-883-4722

## PLATFORM REINFORCEMENT KIT (continued)

### 5' x 5' Platforms (150cm x 150cm):

#### Parts List:

- (4) 1 ¼" Side Outlet T Fitting
- (2) 55 3/8" Long Side Rail Tubes
- (2) 52 3/8" Short Side Rail Tubes
- (1) 5'x 5' Platform with Legs



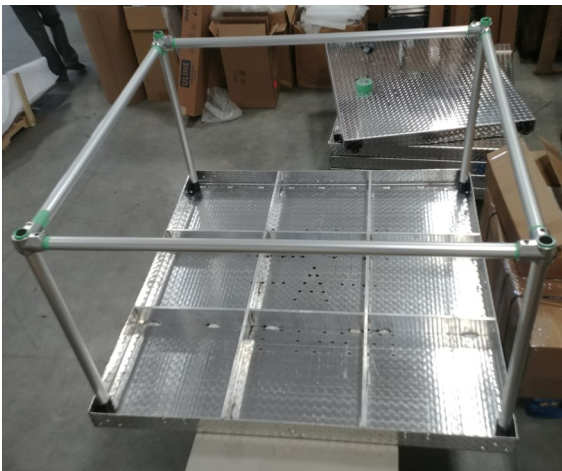
Side Outlet  
T Fitting

**Tools Needed:** (1) 5/16" Hex Key (Included)

**Assembly:** Start by identifying all the parts needed for this assembly.

**IMPORTANT:** Install reinforcement tubes to platform legs before assembling platform.

1. Slide a T-Fitting onto each of the platform leg tubes and locate them with the center of the bracket towards the lower end of the leg tubes (opposite the hole for the bolt in the end).
2. Slightly tighten fittings to the legs with the 5/16" Hex Key to allow for adjustment in following assembly steps.
3. **Assemble the platform referring to the "Platform Assembly Instructions" page 8,** and attach the platform leg tubes into the platform leg brackets – do not fully tighten set screws to allow for movement during reinforcement tubes installation into connectors.
4. Install reinforcement rails by inserting the short side rails into the Side Outlet T brackets first. These need to go between the platform leg tubes that are attached on the side of the platform with the black platform brackets attached to it.
5. Install the long side rail tubes on the other 2 sides. Finish tightening all fittings with 5/16" Hex Key.



ROLL-A-RAMP®

1-866-883-4722

