



#MF-22/26/30/36 MANUAL FOLDING RAMP INSTALLATION INSTRUCTIONS

Install video for Toggler bolt hardware can be viewed at <http://www.tinyurl.com/SnapToggle>



Included: (5) 1/4" x 2 1/2" Phillips head screws; (5) Snap Toggle Mount Clips; (5) 1/4" x 1" Fender Washers

Tools needed: 1/2" drill bit, Phillips screwdriver or cordless drill driver

Step 1: Positioning Mount Bracket

- A) Place folded ramp with bracket on floor of van in approximate position in doorway. Center if possible. Locate best position by unfolding and folding up ramp to check for door clearances for side and top, and floor clearance folded down. Check that inside of door does not hit ramp when closed. When best spot is found, hold down firmly bracket for marking position.

- In some cases is it necessary to offset the ramp at a slight angle to clear the doorway on side installs.

- B) Mark position of mount bracket by outlining bracket.



Step 2: Drilling bracket holes

- A) Mark best positions in bracket for 5 holes to be drilled through bracket plate only—2 on each end-1 in the middle is best.
- B) Once the holes have been drilled, reposition bracket where you marked an outline in step 1. Using a marker mark holes through bracket onto van floor. Set bracket aside.

Step 3: Drilling into floor plate

- A) Using a 1/2" drill bit drill holes marked through first layer of floor (side installs), or through plastic molding and into metal plate below it (rear installs). Remove trim piece to make sure holes all line up to the holes in the metal.



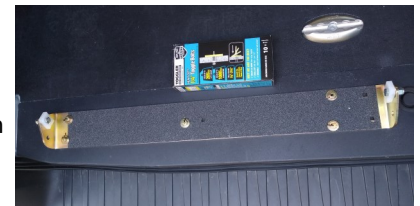
Step 4: Insert Toggle Clips through holes drilled in floor (leave bracket aside!)

- A) Pinch metal toggle clip so it can be fit through the hole in the floor. It will expand.
- B) While holding top plastic piece slide zipper down so it is tight against floor. Snap off plastic sides of toggle clip. Metal clip will stay firm under floor and will not fall out.



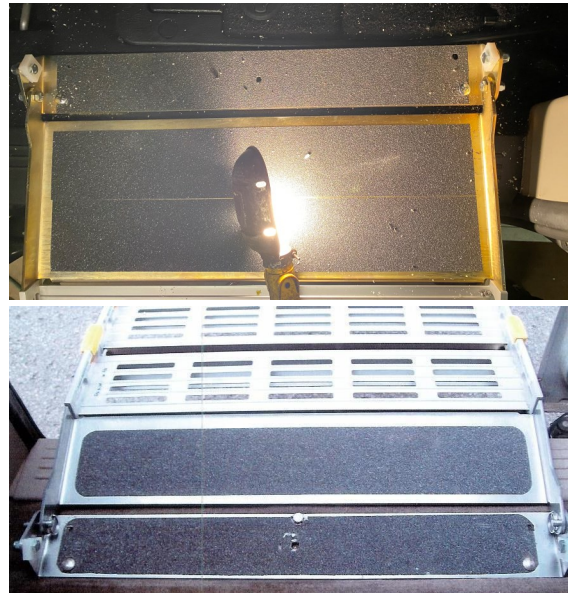
Step 5: Insert screws into toggles in floor to secure bracket to floor.

- A) Line up bracket over holes in floor.
- B) Insert the 1/4" screws through holes in bracket and thread into Toggle bolt clips. Tighten using drill driver or screw driver to complete.



Recap of installation

- 1) Place ramp in van door and position for best location when folded up and down smoothly.
- 2) Mark position of bracket on floor.
- 3) Drill holes in mount bracket.
- 4) Mark and drill holes in floor of van
- 5) Insert Snap Toggle Clips into floor
- 6) Position mount bracket with holes over holes on floor
- 7) Screw in 1/4" x 2 1/2" screws to secure bracket to floor.



Side install on vans like Dodge Caravan



Rear installs

Ford Transit; Dodge ProMaster; Mercedes Sprinter; Other Full Size Vans