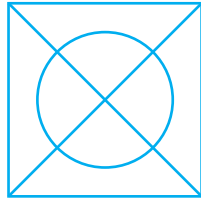


thread & whisk

TRADITIONAL SPIRIT • MODERN OBJECT



Registration marks
to help line up
pattern pages



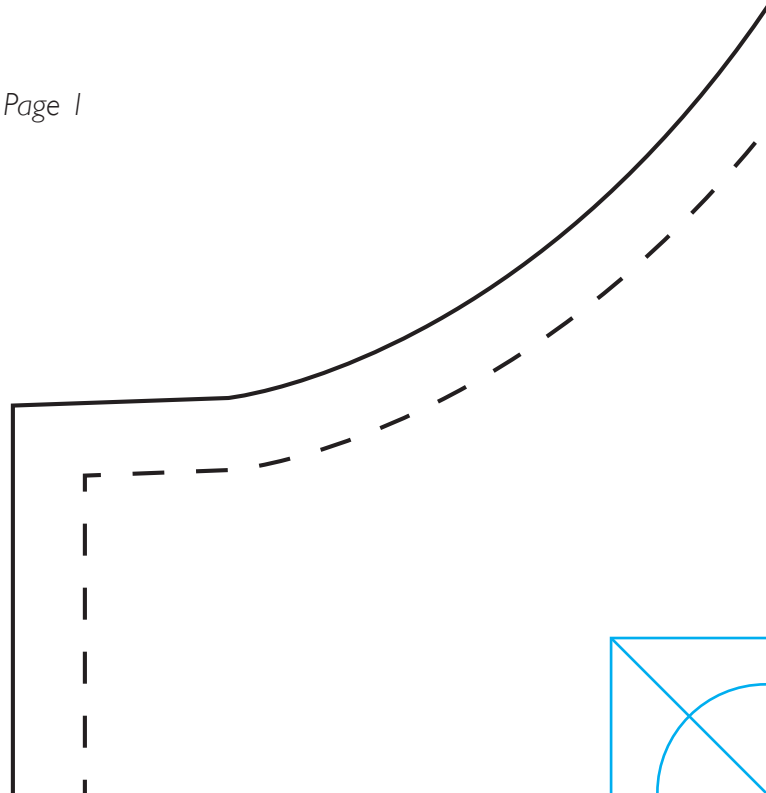
Make sure print-out
is correct scale

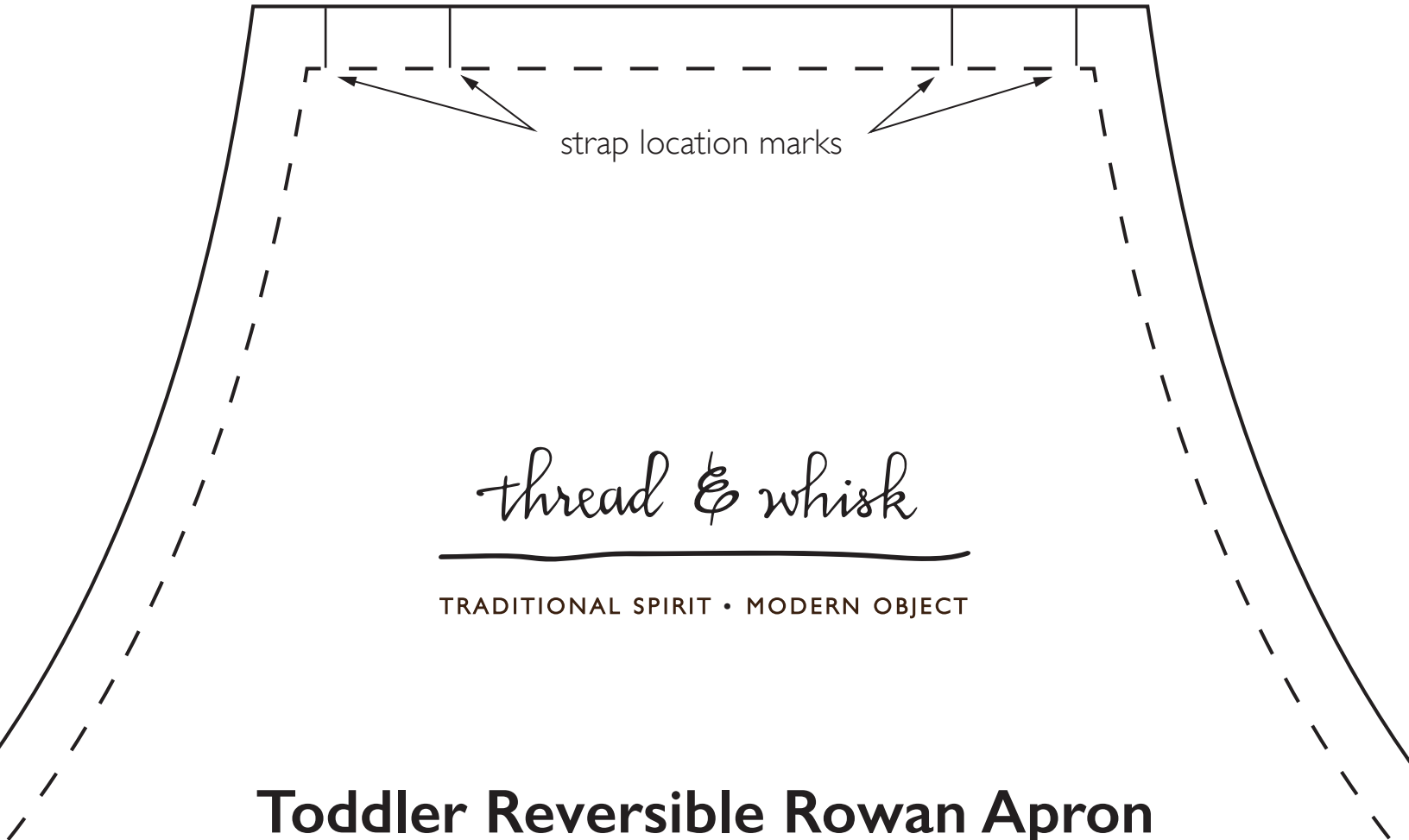
Print all 8 1/2" x 11" pages and
tape them together with page
edges touching, not overlapping.

For more projects and information:
[THREADANDWHISK.COM/MAKE](https://threadandwhisk.com/make)

© Thread & Whisk 2020

Apron Page 1





Toddler Reversible Rowan Apron

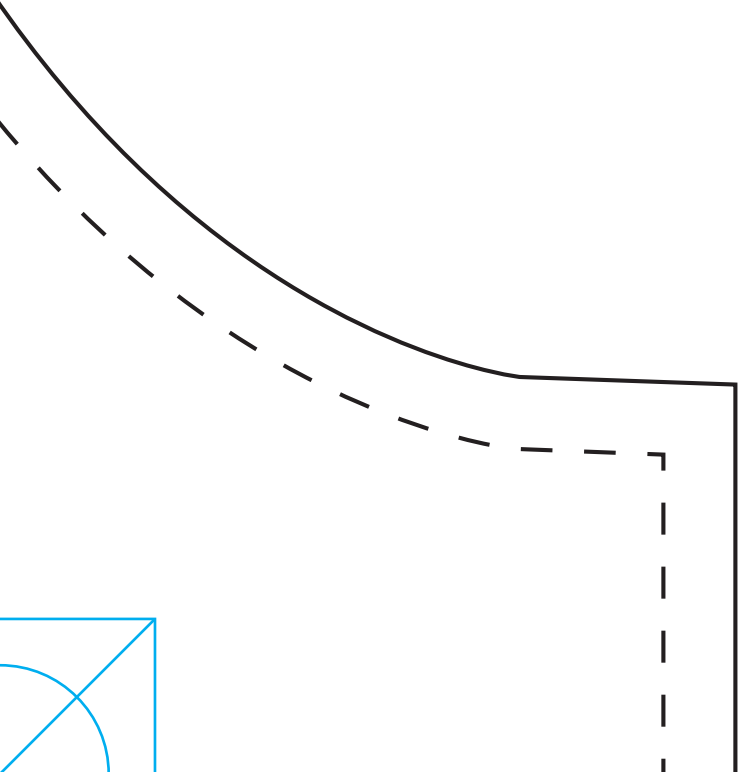
Body - Cut 2 in contrasting fabrics

Seam allowance 3/8" unless specified

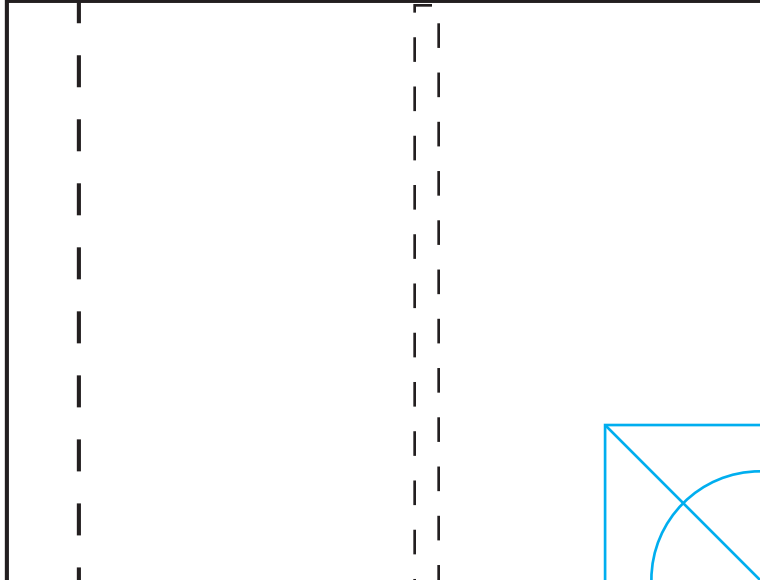
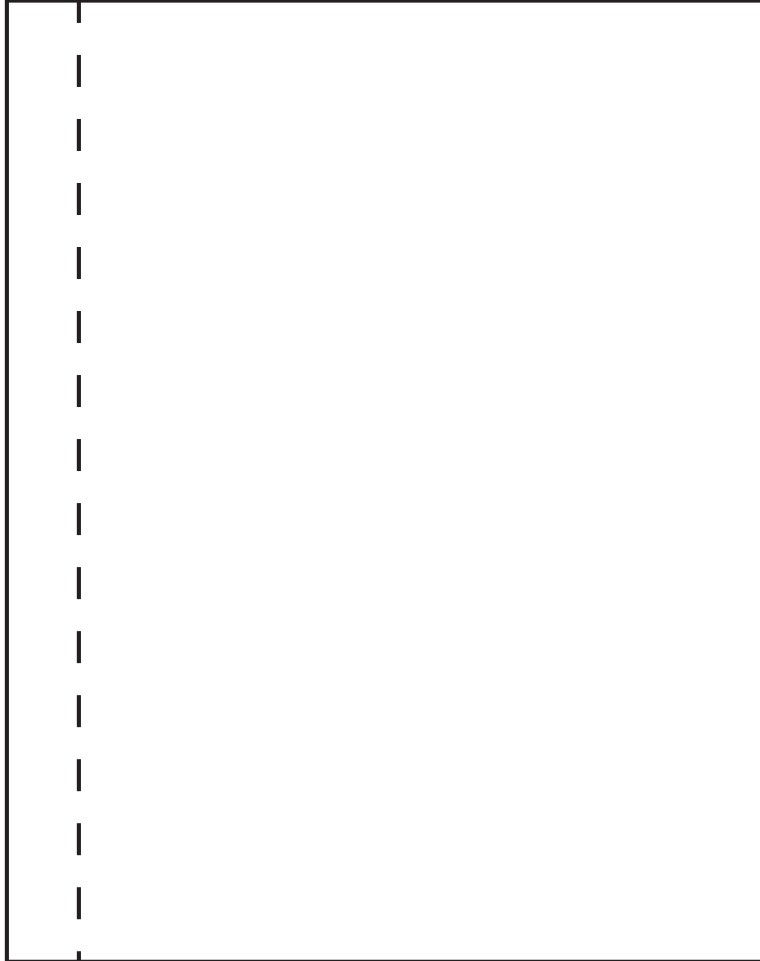
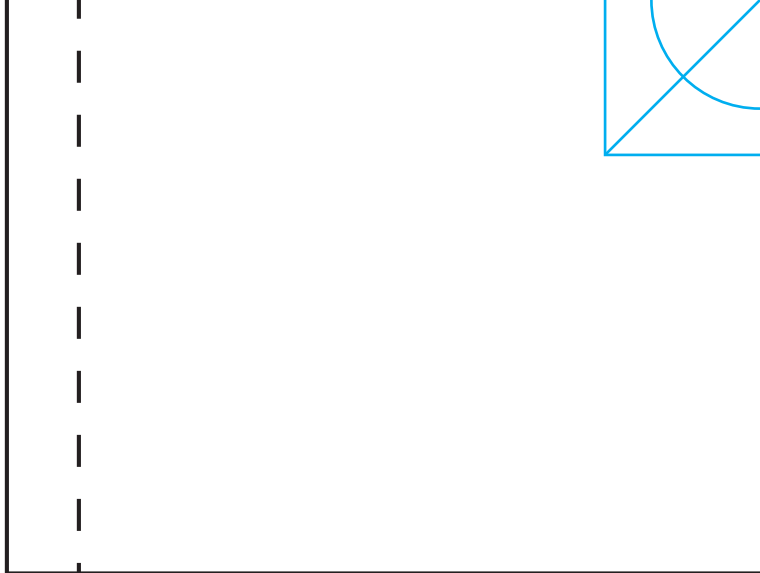
Make sure fabric print is correct direction

Pre-sewn dimensions 25" H x 16 5/16 "W
(Apron pages 1-9)





Apron Page 4



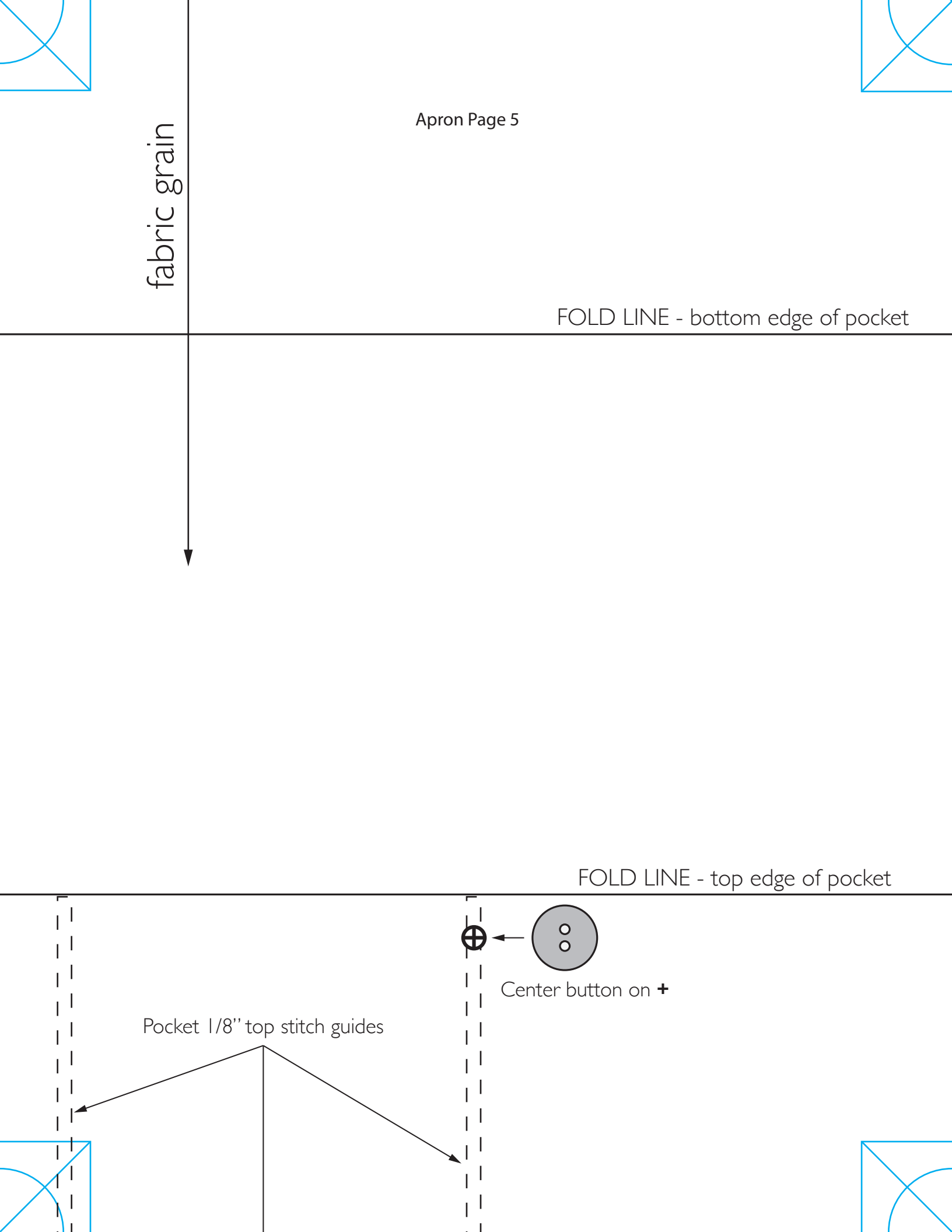
fabric grain

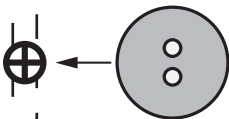
FOLD LINE - bottom edge of pocket

FOLD LINE - top edge of pocket

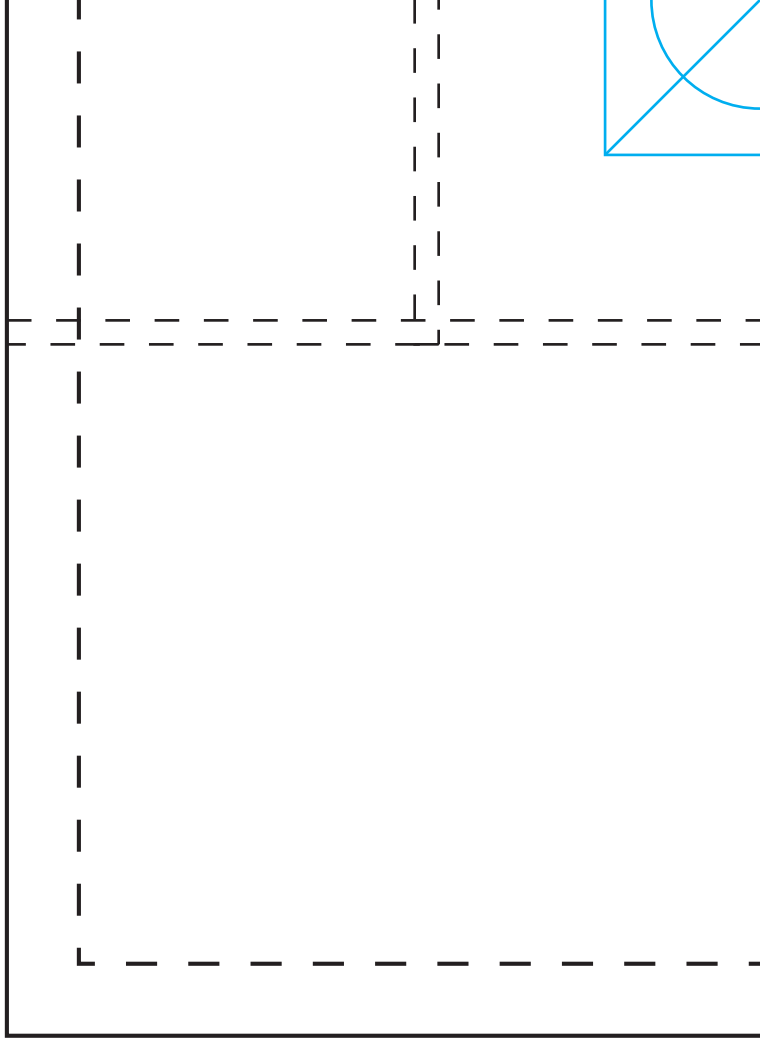
Pocket 1/8" top stitch guides

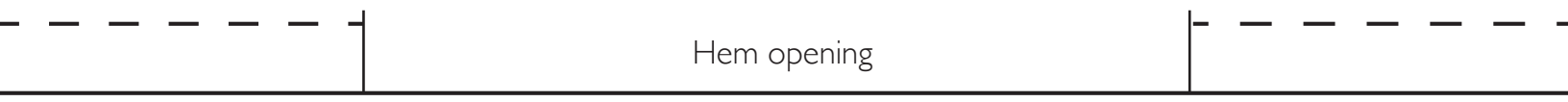
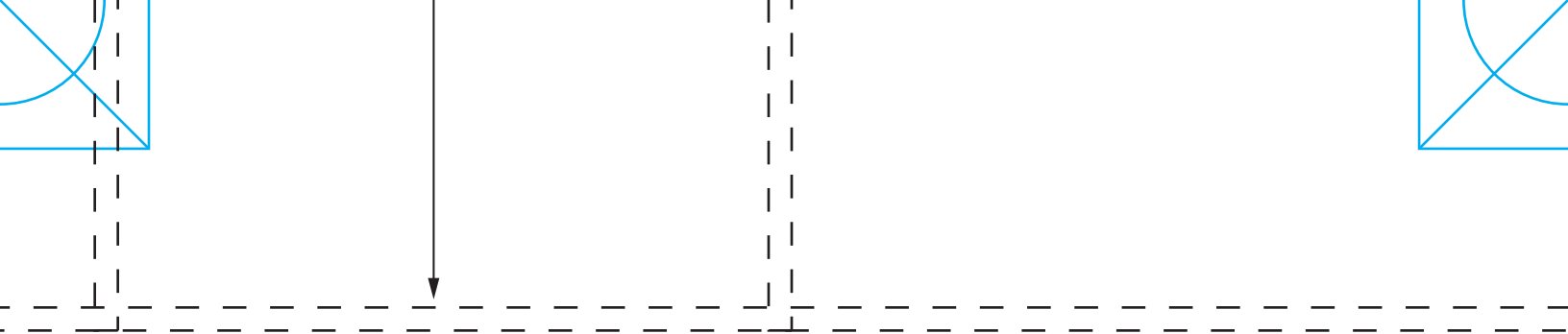
Center button on +



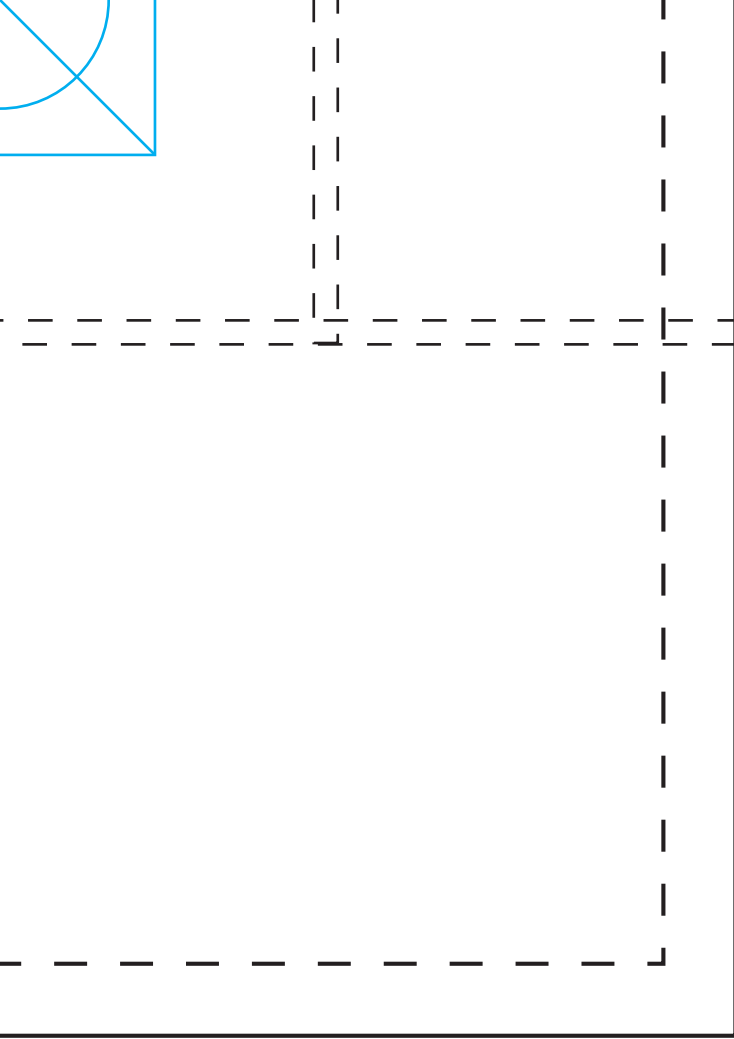


Center button on +





Hem opening



grey indicates stabilizer location

Locate buttonholes after sewing hand towel

thread & whisk

TRADITIONAL SPIRIT • MODERN OBJECT

fabric grain

Toddler Reversible Rowan Apron

Hand Towel - Cut 2 in contrasting fabrics

Seam allowance 1/4"

Make sure fabric print is correct direction

Pre-sewn dimensions 7 3/8" x 8 3/8"

Hem opening