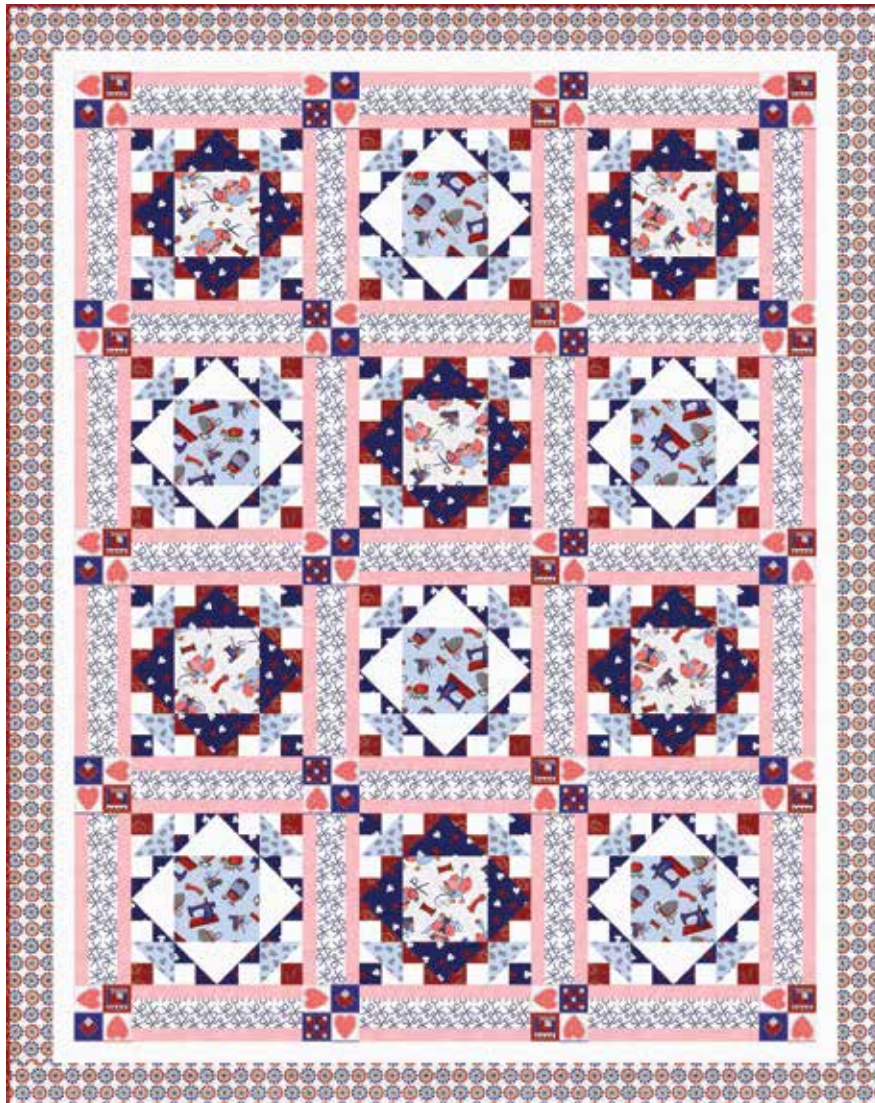




• A Free Project Sheet •
• NOT FOR RESALE •

Sew Tweet

QUILT 2



Featuring fabrics from the **Sew Tweet** collection by **Rena Askey** for **STUDIO e fabrics**

Fabric Requirements

- (A) 6833-19 ¼ yard
- (B) 6834-78 ¾ yard
- (C) 6829-88 1 yard*
- (D) 1351-Pigment White** 1 ⅓ yards
- (E) 6832-11 ½ yard
- (F) 6827-11 ¼ yard
- (G) 1351-Blush**.... 1 yard
- (H) 6831-87 ⅔ yard

- (I) 6826-19 ⅞ yard
- (J) 6828-01 ⅞ yard
- Backing
- 6830-01 4 ¾ yards

* Includes Binding
** Just Color! Collection

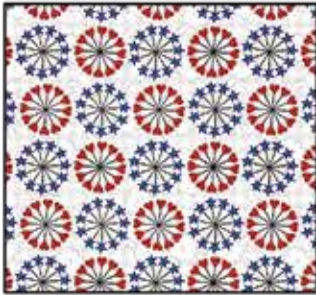
Additional Supplies Needed

- Batting 69" x 85" (Recommended:
Air Lite® Colour Me 100% Cotton)
- Piecing and sewing thread
- Quilting and sewing supplies

Quilt designed by Heidi Pridemore
Finished Quilt Size 61" x 77"
Skill Level: Advanced Beginner

Please check our website for pattern updates before starting this project.

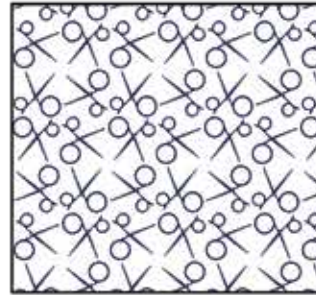
Fabrics in the Collection



Straight Pins
Gray - 6826-19



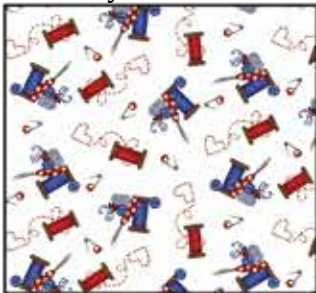
Tossed Sewing Notion
Blue - 6827-11



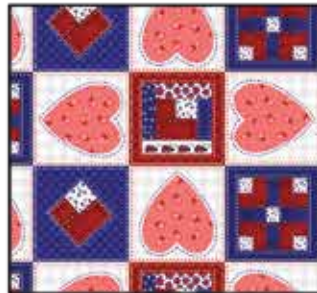
Allover Scissor
White - 6828-01



Tossed Needle
Red - 6829-88



Thread and Seam Ripper Allover
White - 6830-01



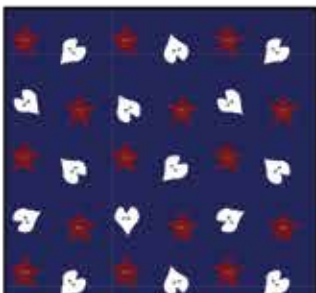
Patchwork
Multi - 6831-87



Tossed Thimble
Blue - 6832-11



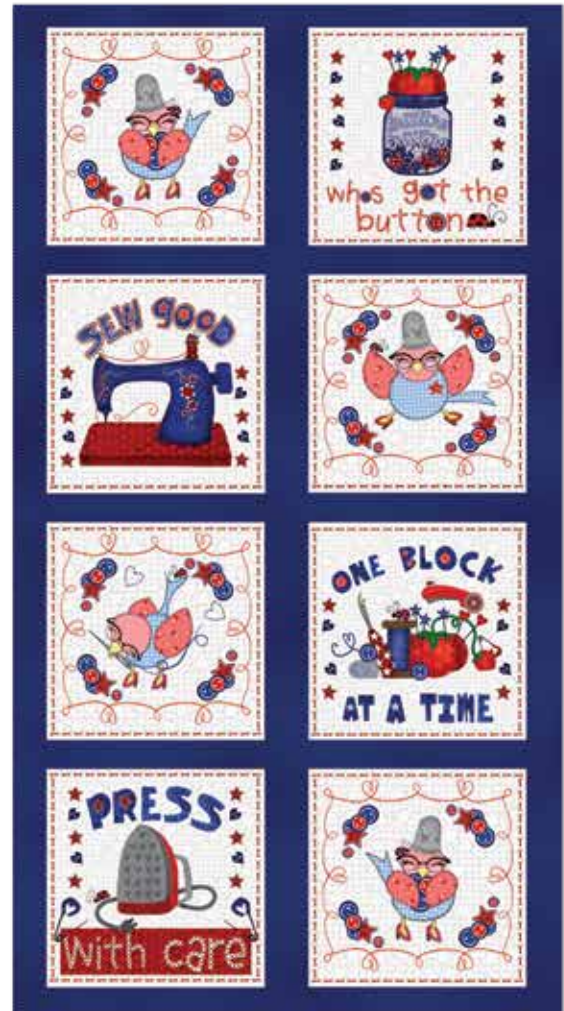
Tossed Allover Bird
Gray - 6833-19



Heart and Star Bottom
Navy - 6834-78



Border Stripe
Gray - 6835-19

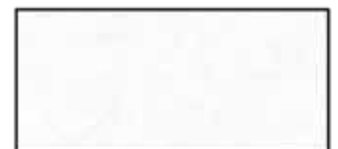


24 Inch Panel
Navy - 6836P-78

Select Fabrics from
Just Color!



Blush
1351-Blush



Pigment White
1351-Pigment White

Cutting

Cutting Instructions

Please note: All strips are cut across the width of fabric (WOF) from selvage to selvage edge unless otherwise noted.

WOF= Width of Fabric • LOF = Length of Fabric

Fabric A (6833-19 Tossed Allover Bird – Gray):

- Fussy cut (1) 6 ½" x WOF strip, sub-cut (6) 6 ½" squares.

Fabric B (6834-78 Heart and Star Bottom – Navy), cut:

- (3) 3 ⅞" x WOF strips, sub-cut (24) 3 ⅞" squares. Cut the squares across (1) diagonal to make (48) 3 ⅞" triangles.
- (3) 2 ⅜" x WOF strips, sub-cut (48) 2 ⅜" squares. Cut the squares across (1) diagonal to make (96) 2 ⅜" triangles.
- (2) 2" x WOF strips, sub-cut (24) 2" squares.

Fabric C (6829-88 Tossed Needle – Red), cut:

- (3) 2 ⅜" x WOF strips, sub-cut (48) 2 ⅜" squares. Cut the squares across (1) diagonal to make (96) 2 ⅜" triangles.
- (2) 2" x WOF strips, sub-cut (24) 2" squares.
- (7) 2 ½" x WOF strips for the binding.

Fabric D (1351-Pigment White Just Color! – Pigment White), fussy cut:

- (3) 3 ⅞" x WOF strips, sub-cut (24) 3 ⅞" squares. Cut the squares across (1) diagonal to make (48) 3 ⅞" triangles.
- (3) 2 ⅜" x WOF strips, sub-cut (48) 2 ⅜" squares. Cut the squares across (1) diagonal to make (96) 2 ⅜" triangles.
- (5) 2" x WOF strips, sub-cut (96) 2" squares.
- (4) 2" x WOF strips. Sew the strips together end to end with diagonal seams and cut (2) 2" x 68 ½" strips.
- (3) 2" x WOF strips. Sew the strips together end to end with diagonal seams and cut (2) 2" x 55 ½" strips.

Fabric E (6832-11 Tossed Thimble – Blue), cut:

- (3) 3 ⅞" x WOF strips, sub-cut (24) 3 ⅞" squares. Cut the squares across (1) diagonal to make (48) 3 ⅞" triangles.

Fabric F (6827-11 Tossed Sewing Notion – Blue), cut:

- (1) 6 ½" x WOF strip, sub-cut (6) 6 ½" squares.

Fabric G (1351-Blush Just Color! – Blush), cut:

- (21) 1 ½" x WOF strips, sub-cut (62) 1 ½" x 12 ½" strips.

Fabric H (6831-87 Patchwork – Multi), cut:

- (3) 4 ½" x WOF strips, sub-cut (20) 4 ½" squares.

Fabric I (6826-19 Straight Pins – Gray), cut:

- (4) 3 ½" x WOF strips. Sew the strips together end to end with diagonal seams and cut (2) 3 ½" x 71 ½" strips.
- (4) 3 ½" x WOF strips. Sew the strips together end to end with diagonal seams and cut (2) 3 ½" x 61 ½" strips.

Fabric J (6828-01 Allover Scissor – White), cut:

- (11) 2 ½" x WOF strips, sub-cut (31) 2 ½" x 12 ½" strips.

Backing (6830-01 Thread and Seam Ripper Allover – White), cut:

- (2) 85" x WOF strips. Sew the strips together and trim to 69" x 85" to make the back.

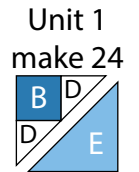
Sewing

Sew using a $\frac{1}{4}$ " seam allowance with right sides together (RST) unless otherwise indicated. Always press towards the darker fabric while assembling, unless otherwise noted by the arrows.

Block Assembly

Note: Pay attention to the orientations when assembling the various components.

1. Sew (1) $2\frac{3}{8}$ " Fabric D triangle to adjacent sides of (1) 2" Fabric B square. Sew (1) $3\frac{7}{8}$ " Fabric E triangle to the long side of the newly sewn triangle to make (1) $3\frac{1}{2}$ " Unit 1 square (Fig. 1). Repeat to make (24) Unit 1 squares total.



Unit 1
make 24
Fig. 1

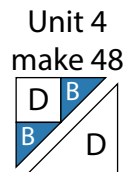
2. Repeat Step 1 and refer to Figures 2-4 for fabric identification, placement and orientation to make (48) Unit 2 squares, (24) Unit 3 squares and (48) Unit 4 squares.



Unit 2
make 48
Fig. 2

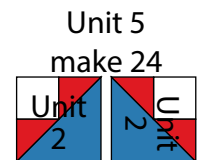


Unit 3
make 24
Fig. 3



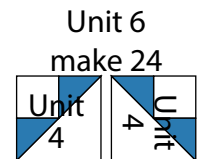
Unit 4
make 48
Fig. 4

3. Sew (2) Unit 2 squares together along the Fabric B sides to make (1) Unit 5 strip (Fig. 5). Repeat to make (24) Unit 5 strips total.



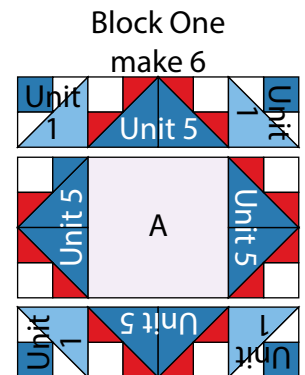
Unit 5
make 24
Fig. 5

4. Sew (2) Unit 4 squares together along the Fabric D sides to make (1) Unit 6 strip (Fig. 6). Repeat to make (24) Unit 6 strips total.



Unit 6
make 24
Fig. 6

5. Sew (1) Unit 1 square to each end of (1) Unit 5 strip to make the top row. Repeat to make the bottom row. Sew (1) Unit 5 strip to each side of (1) $6\frac{1}{2}$ " Fabric A square to make the middle row. Sew together the (3) rows lengthwise to make $12\frac{1}{2}$ " Block One square (Fig. 7). Repeat to make (6) Block One squares total.



Block One
make 6
Fig. 7

6. Sew (1) Unit 3 square to each end of (1) Unit 6 strip to make the top row. Repeat to make the bottom row. Sew (1) Unit 6 strip to each side of (1) 6 ½" Fabric F square to make the middle row. Sew together the (3) rows lengthwise to make 12 ½" Block Two square (Fig. 8). Repeat to make (6) Block Two squares total.

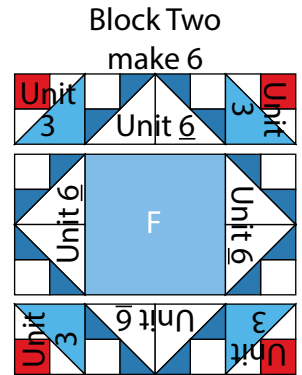


Fig. 8

7. Sew (1) 1 ½" x 12 ½" Fabric G strip to the top and to the bottom of (1) 2 ½" x 12 ½" Fabric J strip lengthwise to make (1) 4 ½" x 12 ½" Block Three strip (Fig. 9). Repeat to make (31) Block Three strips total.

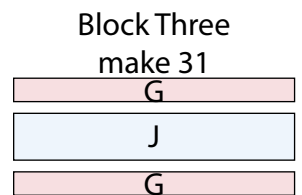


Fig. 9

8. Sew together (4) 4 ½" Fabric H squares and (3) Block Three strips, end to end and alternating them from left to right, to make Row One (Fig. 10). Repeat to make Row Three, Row Five, Row Seven and Row Nine.

9. Sew together (1) Block Three strip, (1) Block One square, (1) Block Three strip, (1) Block Two square, (1) Block Three strip, (1) Block One square and (1) Block Three strip, in that order from left to right, to make Row Two (Fig. 10). Repeat to make Row Six.

10. Sew together (1) Block Three strip, (1) Block Two square, (1) Block Three strip, (1) Block One square, (1) Block Three strip, (1) Block Two square and (1) Block Three strip, in that order from left to right, to make Row Four (Fig. 10). Repeat to make Row Eight.

11. Sew together the (9) Rows from Steps 8-10, lengthwise and in numerical order from top to bottom, to make the 52 ½" x 68 ½" Center Block.

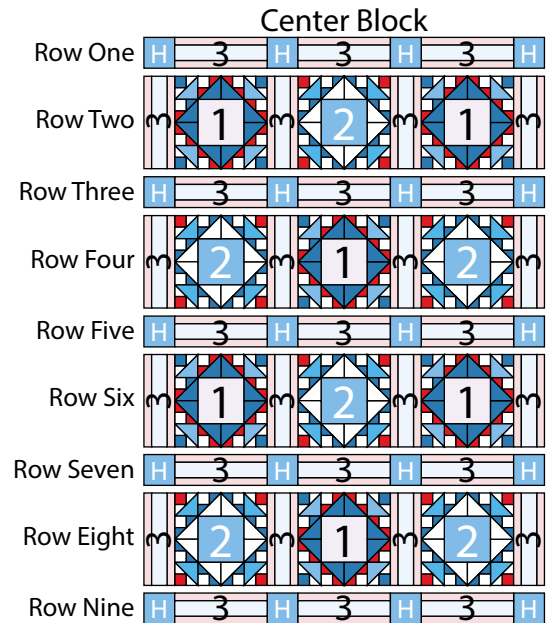


Fig. 10

Quilt Top Assembly

(Follow the Quilt Layout while assembling the quilt top.)

12. Sew (1) 2" x 68 1/2" Fabric D strip to each side of the Center Block. Sew (1) 2" x 55 1/2" Fabric D strip to the top and to the bottom of the Center Block.

13. Sew (1) 3 1/2" x 71 1/2" Fabric I strip to each side of the Center Block. Sew (1) 3 1/2" x 61 1/2" Fabric I strip to the top and to the bottom of the Center Block to make the quilt top.

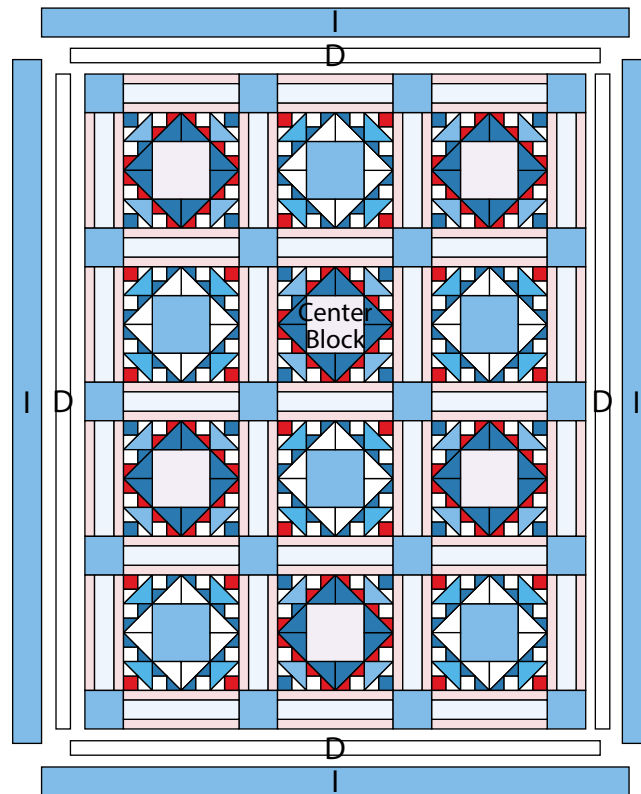
Layering, Quilting and Finishing

14. Press the quilt top and 69" x 85" backing well. Layer backing (wrong side up), batting, pressed quilt top (right side up) and baste. Quilt as desired and trim excess batting and backing when quilting is complete.

Binding

15. Cut the ends of the (7) Fabric C binding strips at a 45-degree angle and sew end to end to make (1) continuous piece of binding. Fold in half lengthwise and press wrong sides together.

16. Sew the binding to the front of the quilt, raw edges together. Turn the folded edge to the back, and hand stitch in place.



Quilt Layout

*Every effort has been made to ensure that all projects are error free. All the information is presented in good faith, however no warranty can be given nor results guaranteed as we have no control over the execution of instructions. Therefore, we assume no responsibility for the use of this information or damages that may occur as a result. When errors are brought to our attention, we make every effort to correct and post a revision as soon as possible. Please make sure to check www.studioefabrics.net for pattern updates prior to starting the project. We also recommend that you test the project prior to cutting for kits. Finally, all free projects are intended to remain free to you and are **not for resale**.*