



Finished Size of Project: **52" x 52" (132.08cm x 132.08cm)**

Fabric Collection Name and Designer: **Living Wild by Lisa Perry**

Technique: **Pieced**

Project Designed by: **Matthew Pridemore of The Whimsical Workshop**

Skill Level: **Intermediate**

## Fabric Requirements

DESIGN	ITEM ID	YARDAGE
(A) Whimsical Wisdom	23606-NVY-CTN-D	7/8 yard (0.80m)
(B) Geometric Wheels	23607-CRL-CTN-D	1/3 yard (0.30m)
(C) Stars and Moons	23608-TRQ-CTN-D	1 yard (0.91m)
(D) Leaf Vines	23609-PUR-CTN-D	3/4 yard (0.69m)*
(E) Parliament Pals	23610-WHT-CTN-D	1/2 yard (0.46m)
(F) Wild Stripe	23611-MLT-CTN-D	1 1/2 yards (1.37m)
(G) Solid White		1/4 yard (0.23m)

\* includes binding



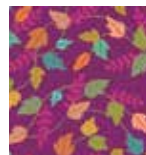
(A)



(B)



(C)



(D)



(E)



(F)



(G)

## Backing (Purchased Separately)

44" (1.12m) wide  
Geometric Wheels

23607-CRL-CTN-D

3 1/2 yards (3.20m)



Backing  
44"

## Additional Materials:

- Batting 60" x 60" (152.40cm X 152.40cm)
- Thread and sewing supplies

*All possible care has been taken to ensure the accuracy of this pattern. We are not responsible for printing errors or the manner in which individual work varies.*

*Please read the instructions carefully before starting this project. If kitting it is recommended a sample is made to confirm accuracy.*

*All free projects are intended to remain free and are not for resale.*



## Cutting Instructions

### Notes:

- Please make sure to check [fabriceditions.com](http://fabriceditions.com) for pattern updates prior to starting the project.
- All strips are cut across the width of fabric (WOF) from selvage to selvage edge unless otherwise noted.
- \*Strips cut Length of Fabric (LOF).

### Fabric A, cut:

- (2) 4½" x 16½" LOF strips\*
- (2) 4½" x 24½" WOF strips

### Fabric B, cut:

- (2) 4½" x WOF strips; subcut
- (16) 4½" squares

### Fabric C, cut:

- (3) 2½" x WOF strips. Sew the strips together end-to-end with diagonal seams and cut
- (2) 2½" x 52½" strips
- (3) 2½" x WOF strips. Sew the strips together end-to-end with diagonal seams and cut
- (2) 2½" x 48½" strips
- (2) 2½" x 28½" WOF strips
- (2) 2½" x 24½" WOF strips
- (1) 1½" x WOF strip; subcut
- (2) 1½" x 16½" strips
- (1) 1½" x WOF strip; subcut
- (2) 1½" x 14½" strips

### Fabric D, cut:

- (2) 4½" x WOF strips; subcut
- (16) 4½" squares
- (6) 2½" x WOF strips for the binding

### Fabric E, cut:

- (1) 14½" square

### Fabric F, cut:

- (4) 5½" x 52" LOF strips\*

### Fabric G, cut:

- (2) 1½" x 38½" WOF strips
- (2) 1½" x 36½" WOF strips

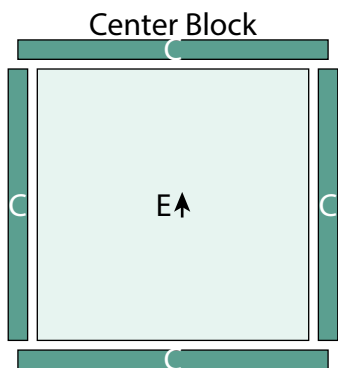
### Backing, cut:

- (2) 60" x WOF strips. Sew the strips together and trim to make the 60" x 60" back

## Sewing

- Sew using a  $\frac{1}{4}$ " seam allowance with right sides together (RST) unless otherwise indicated. Press seams towards the darker fabric, unless otherwise indicated.
  - The arrows in the figures represent the fabric print direction. Pay attention to the fabric and unit orientations when assembling the various components.
- Sew (1) **Fabric C**  $1\frac{1}{2}$ "x  $14\frac{1}{2}$ " strip to each side of (1) **Fabric E**  $14\frac{1}{2}$ " square. Sew (1) **Fabric C**  $1\frac{1}{2}$ "x  $16\frac{1}{2}$ " strip to the top and bottom of the **Fabric E** square to make the  $16\frac{1}{2}$ " x  $16\frac{1}{2}$ " Center Block (**Fig. 1**).

Fig. 1



- Sew together (4) **Fabric D**  $4\frac{1}{2}$ " squares and (3) **Fabric B**  $4\frac{1}{2}$ " squares, alternating them from top to bottom, to make (1)  $4\frac{1}{2}$ " x  $28\frac{1}{2}$ " Side Border (**Fig. 2**). Repeat to make a second Side Border.
- Sew together (5) **Fabric B**  $4\frac{1}{2}$ " squares and (4) **Fabric D**  $4\frac{1}{2}$ " squares, alternating them from left to right, to make (1)  $4\frac{1}{2}$ " x  $36\frac{1}{2}$ " Top Border (**Fig. 3**). Repeat to make the Bottom Border.

Fig. 2

Side Border  
make 2



Fig. 3

Top/Bottom Border  
make 2



## Quilt Top Assembly

Follow the Quilt Layout (Page 6) while assembling the quilt top.

- Sew (1) **Fabric A**  $4\frac{1}{2}$ " x  $16\frac{1}{2}$ " strip to each side of the Center Block. Sew (1) **Fabric A**  $4\frac{1}{2}$ " x  $24\frac{1}{2}$ " strip to the top and bottom of the Center Block.
- Sew (1) **Fabric C**  $2\frac{1}{2}$ " x  $24\frac{1}{2}$ " strip to each side of the Center Block. Sew (1) **Fabric C**  $2\frac{1}{2}$ " x  $28\frac{1}{2}$ " strip to the top and bottom of the Center Block.
- Sew (1) Side Border to each side of the Center Block. Sew the Top Border and

- Bottom Border to the top and to the bottom of the Center Block.
7. Sew (1) **Fabric G** 1½" x 36½" strip to each side of the Center Block. Sew (1) **Fabric G** 1½" x 38½" strip to the top and bottom of the Center Block.
  8. Center (1) **Fabric F** 5½" x 52" strip on (1) side of the Center Block and pin in place. Start sewing the strip a ¼" from the top edge of the block and stop a ¼" from the bottom edge. **DO NOT TRIM THE EXCESS.** Repeat with the opposite side.
  9. Repeat Step 1 to sew (1) **Fabric F** 5½" x 52" strip to the top and to the bottom of the Center Block, making sure to stop and start ¼" away from each end of the block. To miter each corner, fold the Center Block on a diagonal, wrong side together. This should line up the strips from adjacent sides (**Fig. 4**).
  10. Starting at the sewn seam (represented by the arrow in Figure 4), draw a 45-degree line to the edge of the fabric. Sew on the drawn line. Trim the excess fabric leaving a ¼" seam. Repeat this step with the remaining corners.

11. Sew (1) **Fabric C** 2½" x 48½" strip to each side of the Center Block. Sew (1) **Fabric C** 2½" x 52½" strip to the top and bottom of the Center Block to complete the quilt top which should measure 52½" x 52½".

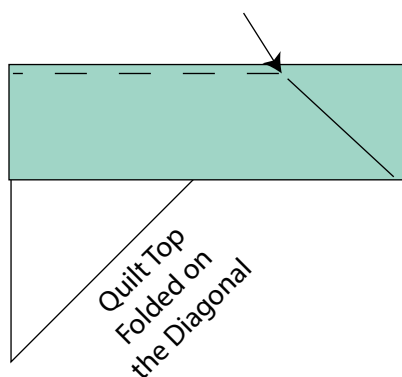
## Layering, Quilting and Finishing

12. Create a quilt sandwich with the batting between the quilt top and the backing. Pin or baste layers together, mark the quilting design, and quilt by hand or machine. When quilting is complete, remove pins or basting and trim batting and backing even with raw edges of the quilt top.

## Binding

13. Sew (6) **Fabric D** 2½" x WOF strips together, end-to-end with 45-degree diagonal seams, to make the binding. Fold this long strip in half lengthwise with wrong sides together and press.
14. Sew binding to the edges of the quilt top, mitering corners, and overlapping ends. Fold binding to the back of the quilt and stitch it in place by hand to finish.

**Fig. 4**

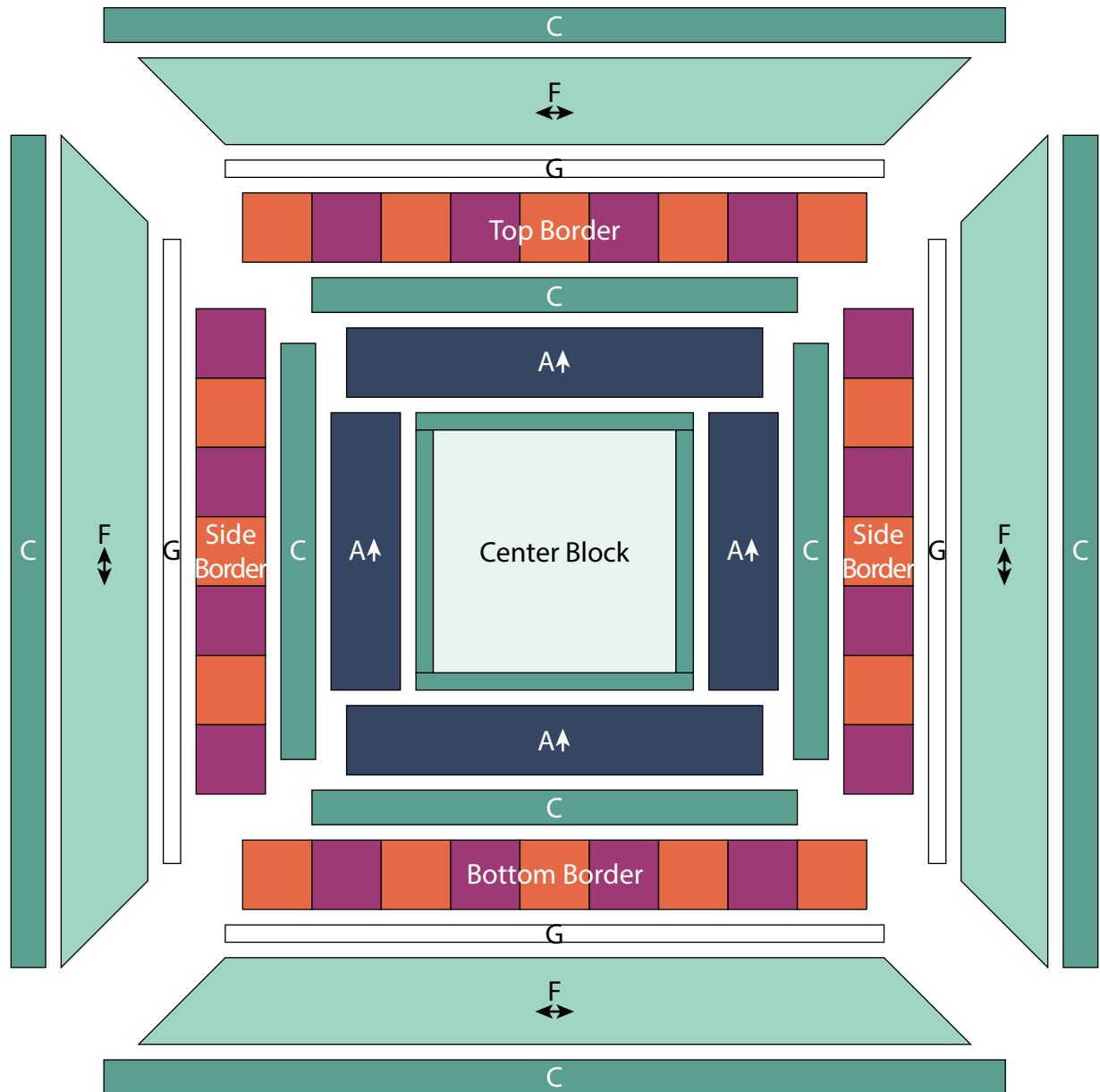


*All possible care has been taken to ensure the accuracy of this pattern. We are not responsible for printing errors or the manner in which individual work varies.*

*Please read the instructions carefully before starting this project. If kitting it is recommended a sample is made to confirm accuracy.*

*All free projects are intended to remain free and are not for resale.*

## Quilt Layout



*All possible care has been taken to ensure the accuracy of this pattern. We are not responsible for printing errors or the manner in which individual work varies.*

*Please read the instructions carefully before starting this project. If kitting it is recommended a sample is made to confirm accuracy.*

*All free projects are intended to remain free and are not for resale.*