

# Lake Escape

Quilt Design by Cyndi Hershey



Quilt size: approximately 32" x 52"

Featuring fabrics from  
Lake Escape by Jetty Home for P&B Textiles



P&B Textiles • pbtex.com • 800-351-9087 • 208 Clock Tower Square, Portsmouth, RI 02871

# Lake Escape

Fabric collection by Jetty Home for P&B Textiles

Welcome to the Lake quilt designed by Cyndi Hershey

Skill level: Confident Beginner • Finished Quilt Size: approximately 32" x 52"

## Yardages:

Fabric A: <b>LESC 4518 PA</b> .....	1 panel
Fabric B: <b>LESC 4520 DB</b> .....	1/3 yard
Fabric C: <b>SERE 4492 DB</b> .....	1/2 yard
Fabric D: <b>SERE 4492 DS</b> .....	1/8 yard
Fabric E: <b>SERE 4492 SS</b> .....	1/8 yard
Fabric F: <b>SERE 4492 TB</b> .....	1/2 yard
Backing: <b>LESC 4519 MU suggested</b> .....	1 3/4 yards
Batting .....	40" x 60"

## Cutting Instructions:

*Please read all instructions carefully before beginning. Strips are cut across the width of fabric (perpendicular to selvages) unless otherwise stated. All seams are sewn with a 1/4" seam unless otherwise stated. Label all pieces.*

### From Fabric A:

1. Cut panel 23 1/2" x 42 1/2" centering image.

### From Fabric B:

1. Cut five 2" strips. Sew strips together end to end with diagonal seams. Press seams open. From this pieced strip, cut two 2" x 32 1/2" strips and two 2" x 49 1/2" strips. (Outer Border)

### From Fabric C:

1. Cut two 1 1/2" strips; subcut four 1 1/2" x 5 1/2" strips and four 1 1/2" x 6 1/2" strips. (Second Border)
2. Cut five 2 1/2" strips. (Binding)

### From Fabric D:

1. Cut two 1 1/2" strips; subcut four 1 1/2" x 5 1/2" strips and four 1 1/2" x 10 1/2" strips. (Second Border)

### From Fabric E:

1. Cut two 1 1/2" strips; subcut two 1 1/2" x 5 1/2" strips and two 1 1/2" x 15 1/2" strips. (Second Border)

### From Fabric F:

1. Cut six 1 1/2" strips. Sew strips together end to end with diagonal seams. Press seams open. From this pieced strip, cut two 1 1/2" x 29 1/2" strips, two 1 1/2" x 42 1/2" strips and two 1 1/2" x 47 1/2" strips. (First & Third Borders)
2. Cut two 2" strips; subcut two 2" x 25 1/2" strips. (First Border)

## Piecing Instructions:

1. Sew one 1 1/2" x 42 1/2" F strip to both sides of the panel. Press toward the strips. Sew one 2" x 25 1/2" F strip to the top and bottom of the panel. Press toward the strips.
2. Sew end to end, in order: one 1 1/2" x 5 1/2" C strip, one 1 1/2" x 10 1/2" D strip, one 1 1/2" x 15 1/2" E strip, one 1 1/2" x 10 1/2" D strip and one 1 1/2" x 5 1/2" C strip. Press seams open or to one side. Repeat. Sew one pieced border to both sides of the quilt. Press toward the first border.
3. Sew end to end, in order: one 1 1/2" x 6 1/2" C strip, one 1 1/2" x 5 1/2" D strip, one 1 1/2" x 5 1/2" E strip, one 1 1/2" x 5 1/2" D strip and one 1 1/2" x 6 1/2" C strip. Press seams open or to one side. Repeat. Sew one pieced border to the top and bottom of the quilt. Press toward the first border.
4. Sew one 1 1/2" x 47 1/2" C strip to both sides of the quilt. Press toward the strips. Sew one 1 1/2" x 29 1/2" C strip to the top and bottom of the quilt. Press toward the strips.
5. Sew one 2" x 49 1/2" B strip to both sides of the quilt. Press toward the strips. Sew one 2" x 32 1/2" B strip to the top and bottom of the quilt. Press toward the strips.

## Finishing:

1. Press backing well and trim backing to 40" x 60".
2. Layer quilt, batting, and backing. Baste layers together.
3. Quilt as desired.
4. Trim layers even with quilt top.
5. Join five 2 1/2" C binding strips with diagonal seams. Press seams open. Attach binding using your favorite method.
6. Make a label and sew to the back of the quilt.



*Quilt Diagram*

# Lake Escape

Fabric Collection by  
Jetty Home for P&B Textiles



LESC 4517 PA



LESC 4518 PA\*



LESC 4519 MU†



LESC 4520 B



LESC 4520 DB\*



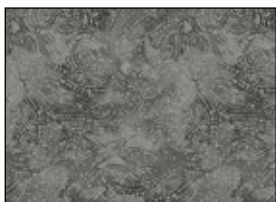
LESC 4521 MU



SERE 4492 DB\*



SERE 4492 TB\*



SERE 4492 DS\*



SERE 4492 SS\*

