



Dog Bed



Featuring the
Dogs In The City Collection
by Weekday Best
Shipping to stores July 2022



Finished Size: 34 in x 41 in x 5 in (86.36 cm x 104.14 cm x 12.7 cm)

Fabric Needed

3 Wishes Fabric® Dogs in the City Collection

- 1 Panel - Dogs Panel (19142-PNL-CTN-D)
- 1 1/8 yards - Painted Paws (19137-WHT-CTN-D)
- 3/4 yard - Wall to Wall (19138-MLT-CTN-D)

Additional Supplies Needed:

- Coordinating thread
- 10 lb box of fiber fill
- Piecing and sewing thread
- Basic sewing supplies

Before You Begin

Read all instructions before beginning project. Do not pre-wash fabrics. Press fabrics with a dry iron on cotton setting before cutting. Use a ¼" (6.35mm) seam allowance and sew fabrics with right sides together (RST) unless otherwise noted. Press seams in the direction of the arrows. wof = width of fabric

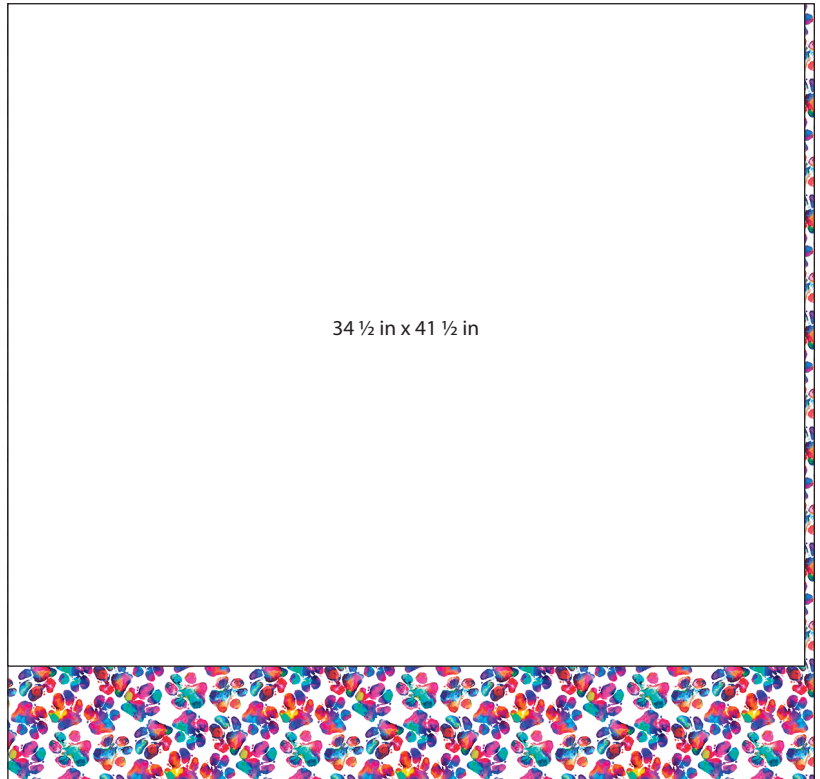
Note: A printed panel may become slightly skewed during the finishing process. Check if panel is square before cutting by folding the panel so selvages meet. If all edges do not meet, pull firmly from corner to corner until the edges meet. Continue until all corners are square.

Cutting

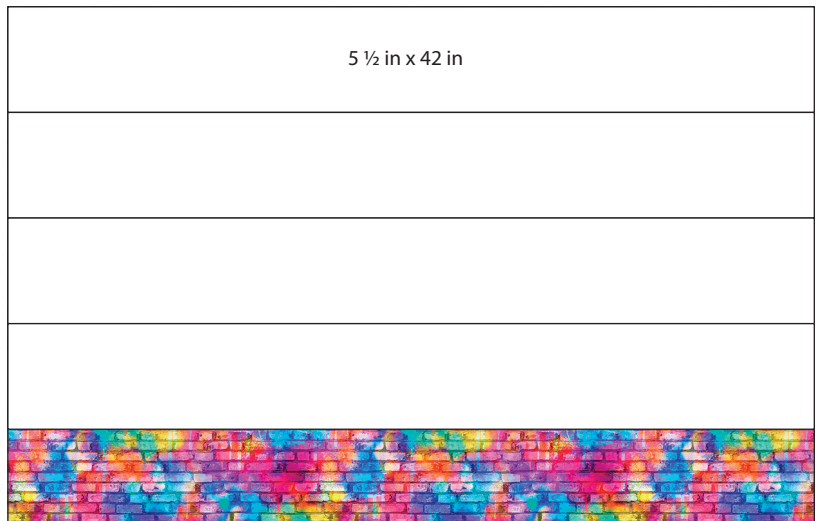
Use a rotary cutter and ruler to cut the size and number of rectangles from each fabric listed below.



Large Panel – 19142-PNL-CTN-D 1 yd x wof (91.44 cm x 106.68 cm)
Fussy Cut 1 – 34 ½ in x 41 ½ in (87.63 cm x 105.41 cm)



Painted Paws – 19137-WHT-CTN-D 1 ½ yds x wof (102.87 cm x 106.68 cm)
Cut 1 – 34 ½ in x 41 ½ in (87.63 cm x 105.41 cm)



Wall to Wall – 19138-MLT-CTN-D ¾ yd x wof (68.58 cm x 106.68 cm)
Cut 4 – 5 ½ in x 42 in (13.97 cm x 106.68 cm)

Sewing

1. Sew four Wall to Wall strips 5 ½ in x 42 in (13.97 cm x 106.68 cm) RST end to end along the 5 ½ in (13.97 cm) edge with diagonal seams. From the sewn strip cut one Wall to Wall strip 5 ½ in X 168 in (13.97 cm x 426.72 cm).
2. Follow Diagram A to place the Wall to Wall strip 5 ½ in x 168.68 in (13.97 cm x 426.72 cm) RST with the Large Panel 34 ½ in x 41 ½ in (87.63 cm x 105.41 cm) halfway down on side of the panel. Pin the strip all the way around the panel and overlap the first edge of the Wall to Wall strip by a ¼ in (6.35 mm); trim the excess away. Unpin the Wall to Wall strip from the panel.

Dia. A



3. Follow Diagram B to fold the Wall to Wall strip in half RST, aligning the 5 ½ in (13.97 cm) ends. Sew the short ends together to make a large ring.
4. Re-align and re-pin the Wall to Wall ring to the Large Panel RST and sew the two pieces together. Press seams toward strip.
5. Align and pin the other cut edge of the Wall to Wall ring with the Painted Paws piece 34 ½ in x 41 ½ in (87.63 cm x 105.41 cm). Sew the two pieces together leaving an opening for turning.
6. Turn the Dog Bed right side out through the opening. Stuff the Dog Bed with fiber fill to the desired fullness. Hand stitch the opening closed with a whipstitch to complete the Dog Bed.

Dia. B

