



Support Note

GEOSPATIAL
JANUARY 2017

Configuring the receiver and firmware upload from the WebGUI over PPP using Bluetooth wireless technology (Windows 10)

R8s, R8, and R7 GNSS receivers without can be configured and firmware uploaded using a web browser (WebGUI). This topic describes how to set up a Bluetooth PPP to a receiver on the Windows 10 operating system. The computer must be connected to the receiver using Bluetooth wireless technology.

Steps

The steps required are:

1. Create a Bluetooth connection between the computer and the receiver.
2. Set up and configure the modem hardware.
3. Create a Network/Internet connection to access the Trimble receiver through a web browser.

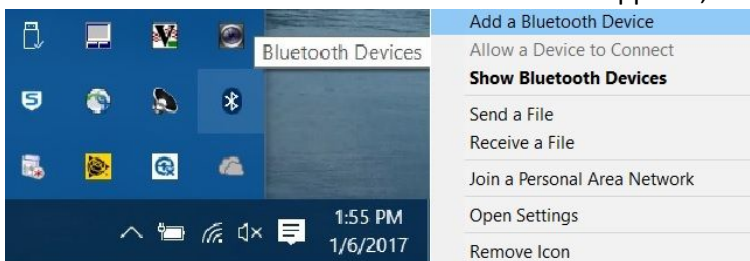
This document is for informational purposes only and is not a legally binding agreement or offer. Trimble makes no warranties and assumes no obligations or liabilities hereunder.

www.trimble.com

© 2017, Trimble Inc. All rights reserved. Trimble and the Globe & Triangle logo are trademarks of Trimble Inc., registered in the United States and in other countries. All other trademarks are the property of their respective owners.

Section 1 - Creating a Bluetooth connection between the computer and the receiver

1. In the system tray (in the lower right corner of the Windows taskbar), click the Up arrow and then click the Bluetooth icon. From the shortcut menu that appears, select *Add a Bluetooth Device*:



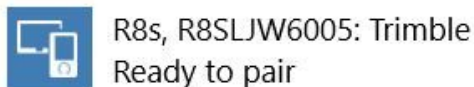
2. Windows 10 searches for the Bluetooth device. Ensure that Bluetooth is switched on. Match the model and serial number to the one shown on the screen. The Device name will match the model and serial number of your receiver. Select the correct device by clicking on it:

Manage Bluetooth devices

Bluetooth



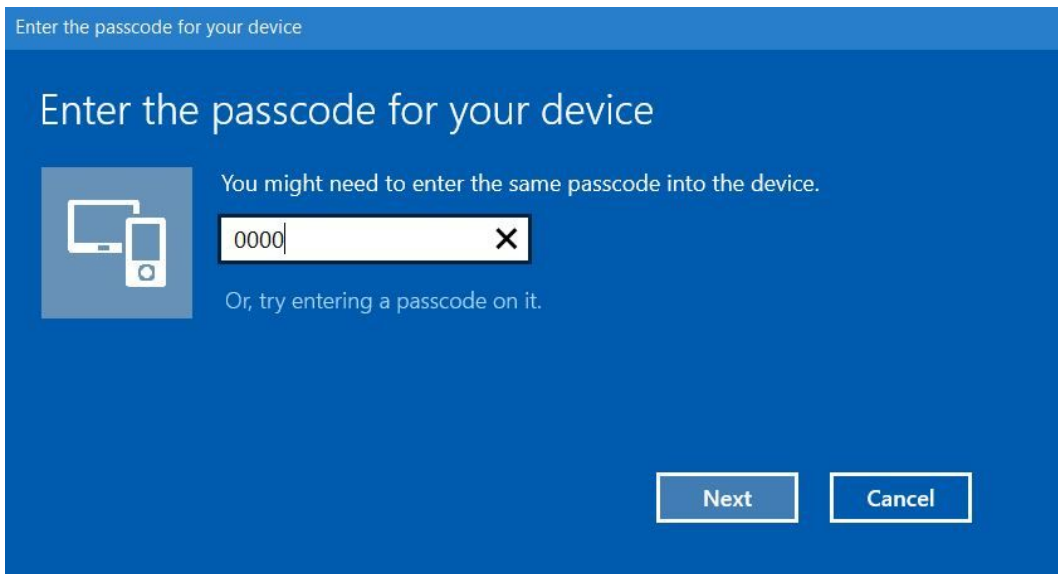
Your PC is searching for and can be discovered by Bluetooth devices.



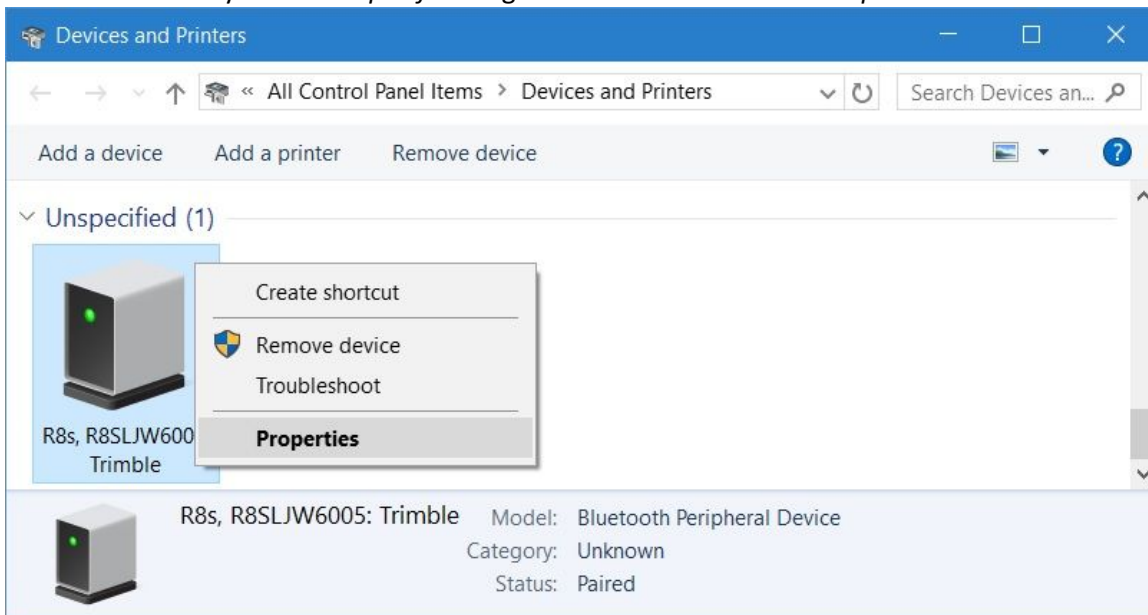
And then click **Pair**:



3. A window appears to enter the passcode for your device. By default, the passcode is 0000. Enter it into the dialog and click **Next**:

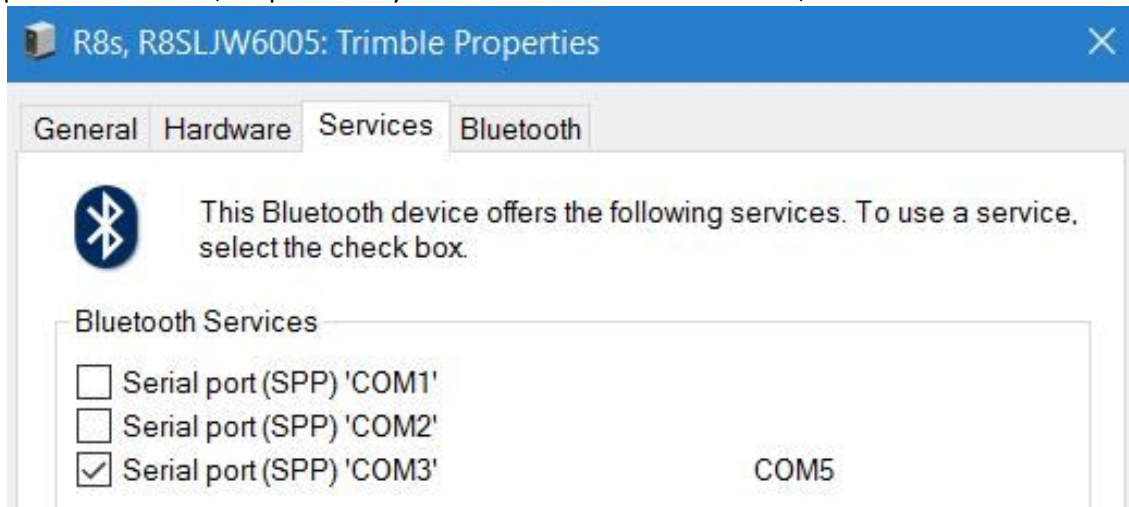


4. Once the receiver has been paired, go to *Devices and Printers* in the *Control Panel* and find your device, which is most likely under *Unspecified*. Right click on it and click on *Properties*:



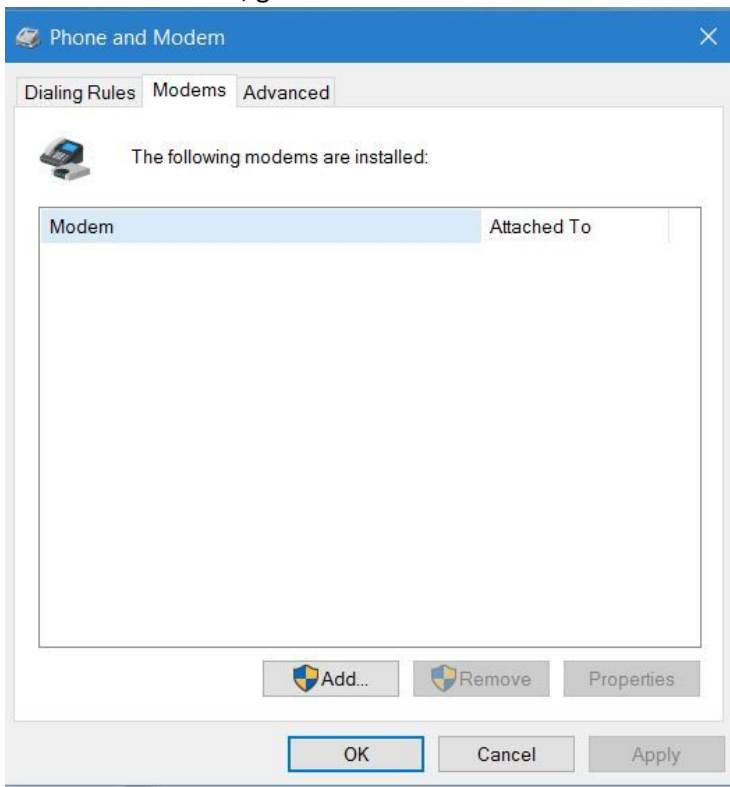
5. In the *Services* tab, clear the check boxes for *COM1* and *COM2* services and click "Apply". Take note of the local *COM* port for *COM3* (this is *COM5* in the example below). You will need to know this *COM*

port for Section 2, Step 4. Once you have cleared the check boxes, click "OK:

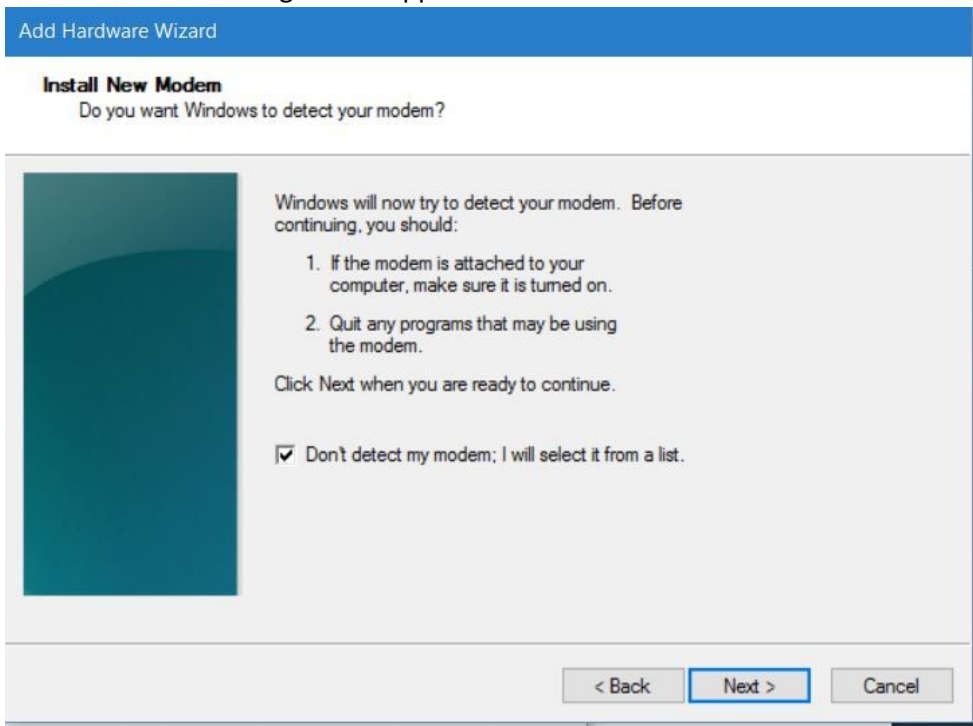


Section 2 - Setting up and configuring the modem

1. In the *Control Panel*, go to *Phone and Modem* and select the *Modems* tab:

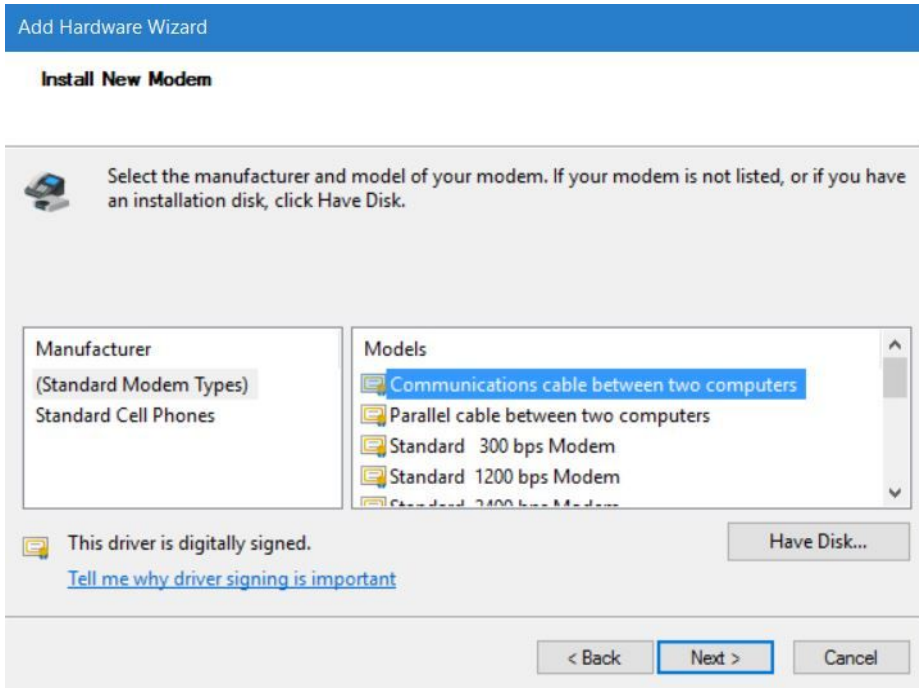


2. Click **Add**. The following wizard appears:

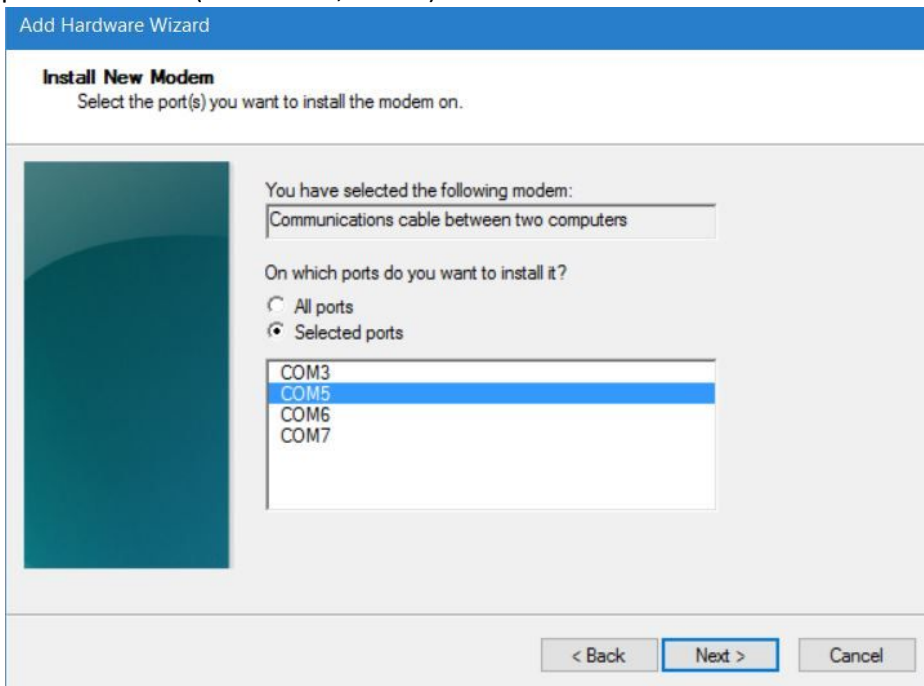


3. Select the *Don't detect my modem; I will select it from a list* check box and then click **Next**. Once the list populates, select the *Communications cable between two computers* option and then click **Next**.

Note - Even though you are using a Bluetooth connection, you are figuratively using it as a “cable” between the receiver and the computer:



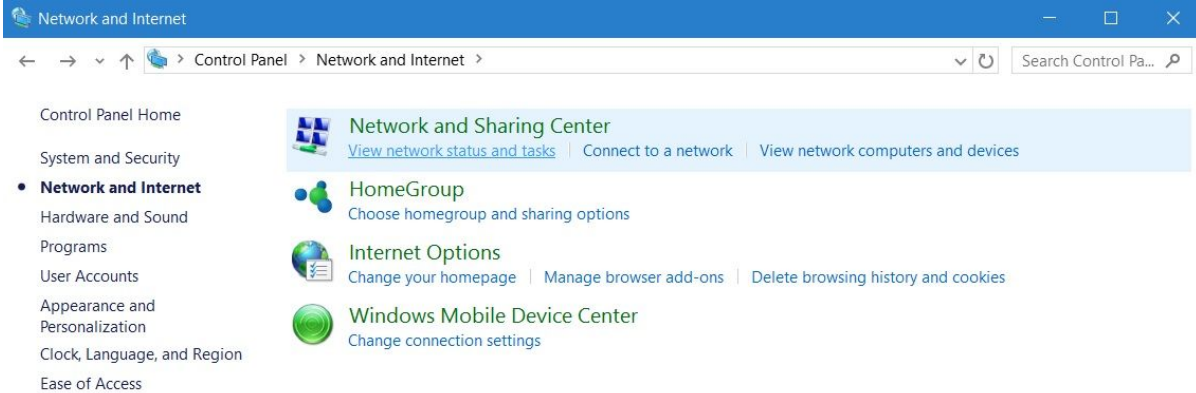
4. The COM port you noted earlier (Section 1, Step 5) should be displayed below *Selected ports*. Click the port to select it (in this case, COM5) and then click **Next**:



Once the modem installs, the Bluetooth pairing and hardware setup are now complete.

Section 3 - Creating an Internet connection

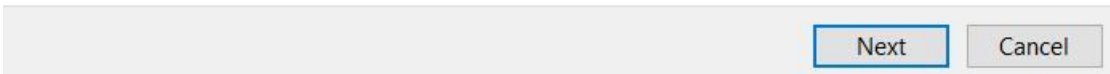
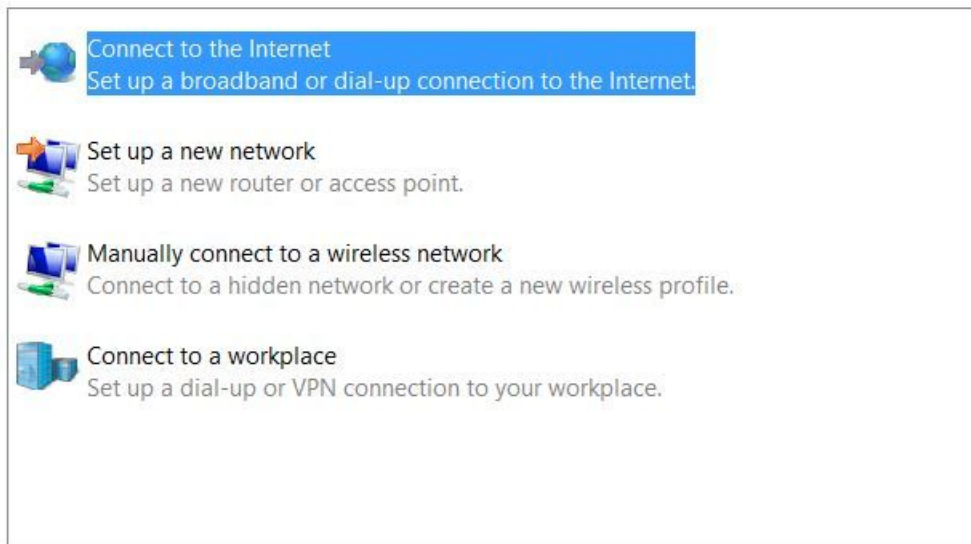
1. In the *Control Panel*, go to *Network and Internet* and click the *View network status and tasks* link:



2. Click the *Set up a new connection or network* link:



Choose a connection option



3. If you are connected to the internet, you will be informed as such and need to select *Set up a new connection anyway*. You will also be prompted if you want to use a connection you already have. If this is the first time setting up the connection for this particular receiver (you have do this process to each individual serial number that you wish to access the WebGUI), select *No, create a new connection*:





Do you want to use a connection that you already have?

- No, create a new connection
 Yes, I'll choose an existing connection

4. When you are asked how do you want to connect, select *Dial-up*:



How do you want to connect?

-  **Broadband (PPPoE)**
Connect using DSL or cable that requires a user name and password.
-  **Dial-up**
Connect using a dial-up modem or ISDN.

5. In the Dial-up phone number field, enter 1. This is a placeholder number that you will delete later. after you enter it you will be able to click **Connect**:

A screenshot of a Windows-style dialog box titled "Connect to the Internet". The title bar is blue with a back arrow, a globe icon, and the text "Connect to the Internet". The dialog box has standard minimize, maximize, and close buttons in the top right corner. The main content area is white and contains the following text and form elements:

Type the information from your Internet service provider (ISP)

Dial-up phone number: [Dialing Rules](#)

User name:

Password:
 Show characters
 Remember this password

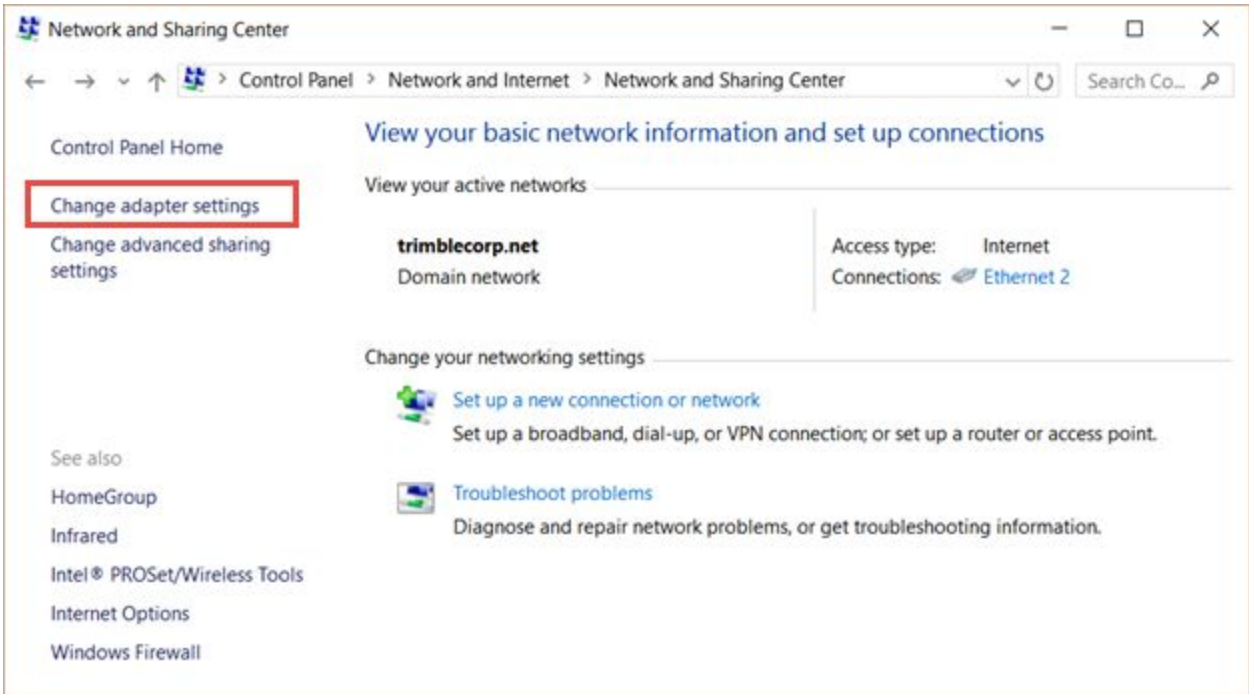
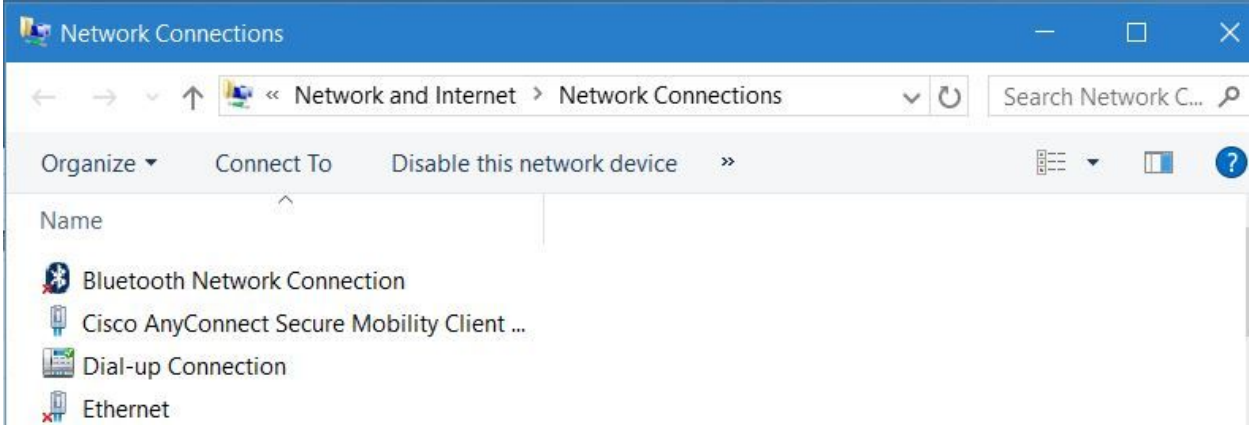
Connection name:

Allow other people to use this connection
This option allows anyone with access to this computer to use this connection.

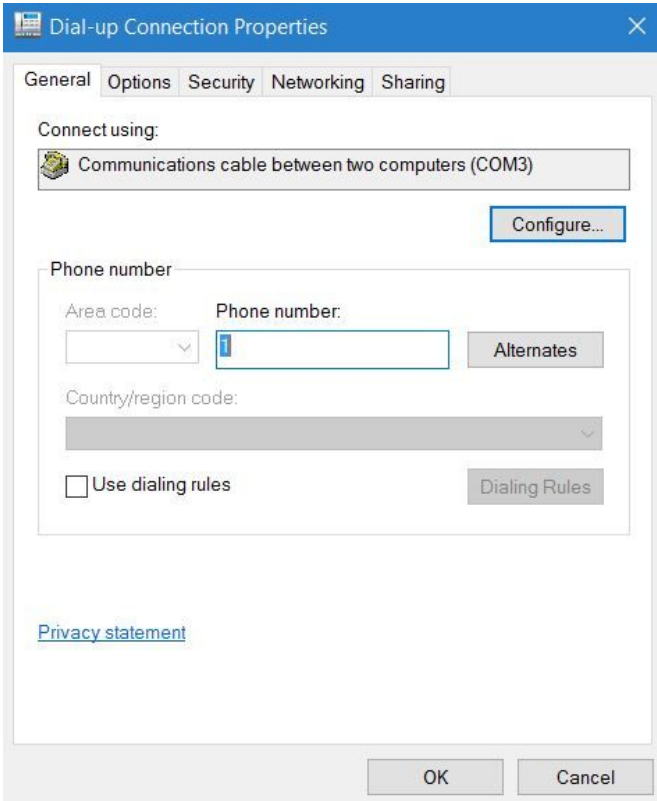
[I don't have an ISP.](#)

At the bottom right, there are two buttons: "Connect" and "Cancel".

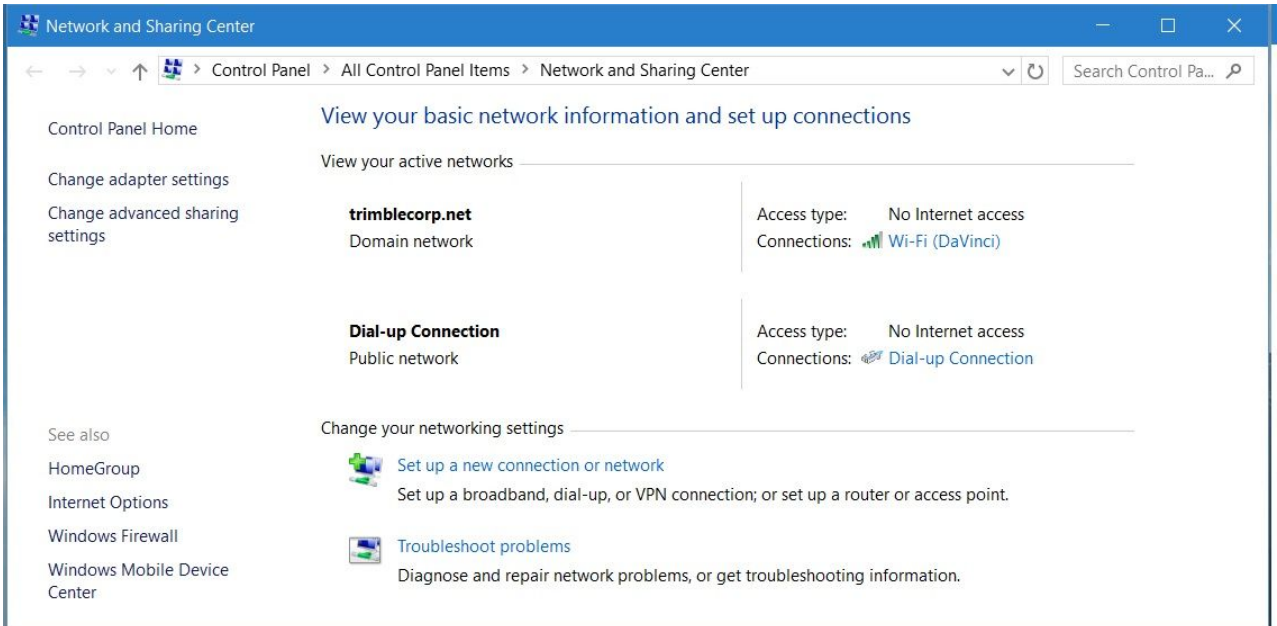
6. You will be informed that your connection is ready to use. Go to *Network and Internet* in the *Control Panel*, and your *Dial-up Connection* is there. *Network Connections* can also be found in *Network and Sharing Center* under *Change adapter settings*:



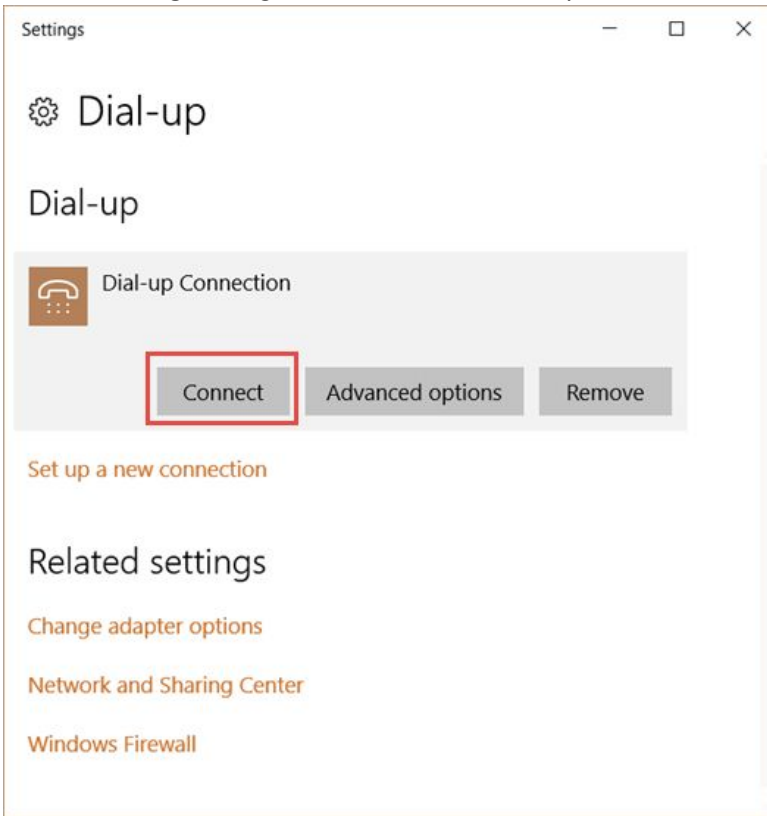
7. Right-click the *Dial-up Connection* link and then from the shortcut menu that appears select *Properties*. In the Phone number field, remove the placeholder "1" and then click **OK**:



8. You can now connect to your *Dial-up Connection*. Double click on *Dial-up Connection*:



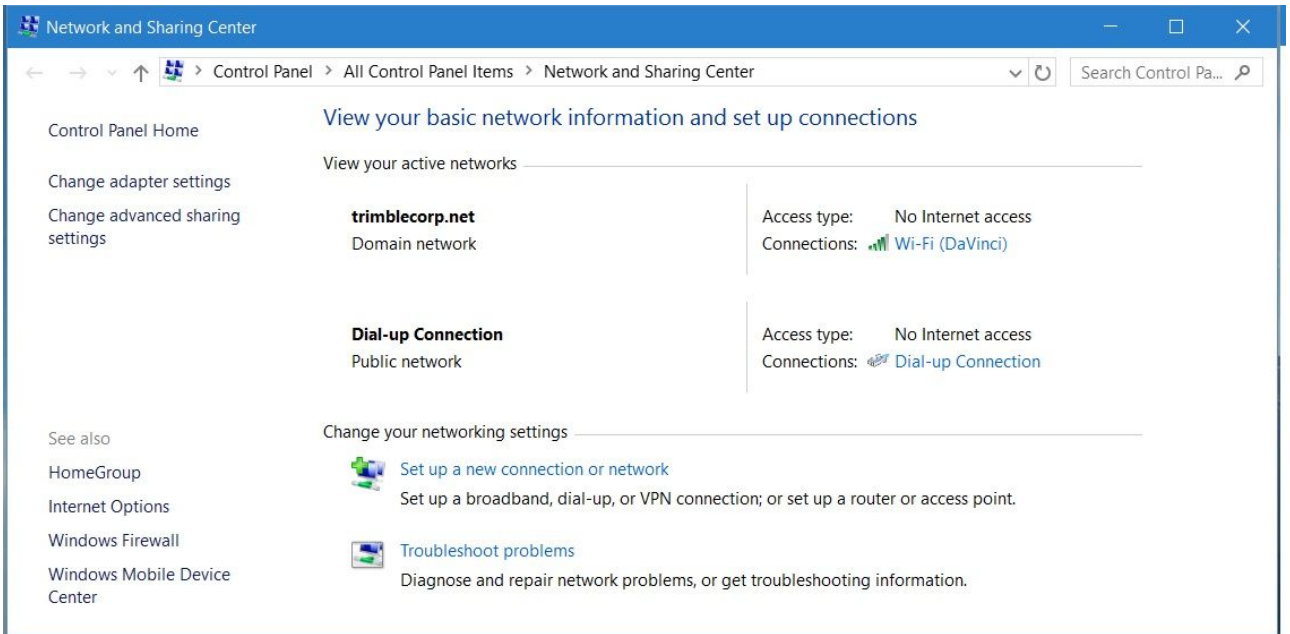
In the resulting *Settings* screen, click the *Dial-up Connection* to expand the menu and click **Connect**:



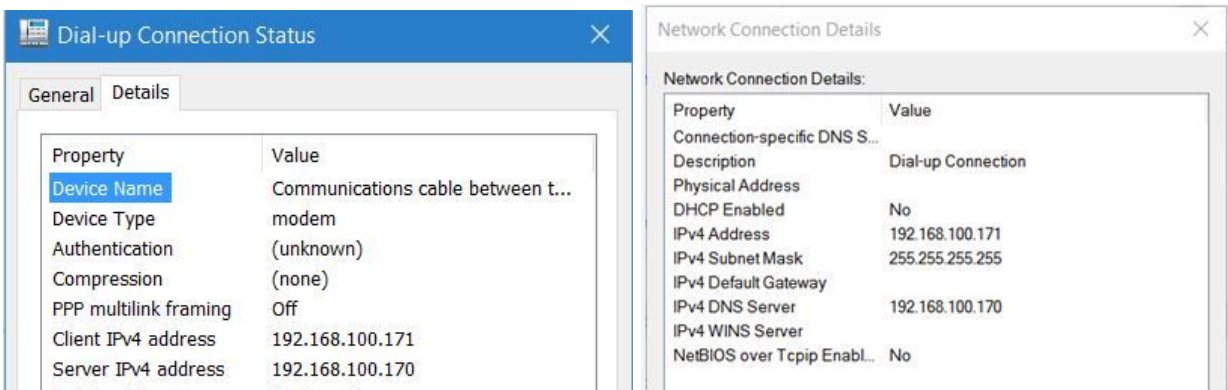
Once you do, you will get the following screen:



- Click **Dial**. You do not need to fill out any of the information. Now go back to the *Network and Sharing Center*. Your connection is there:



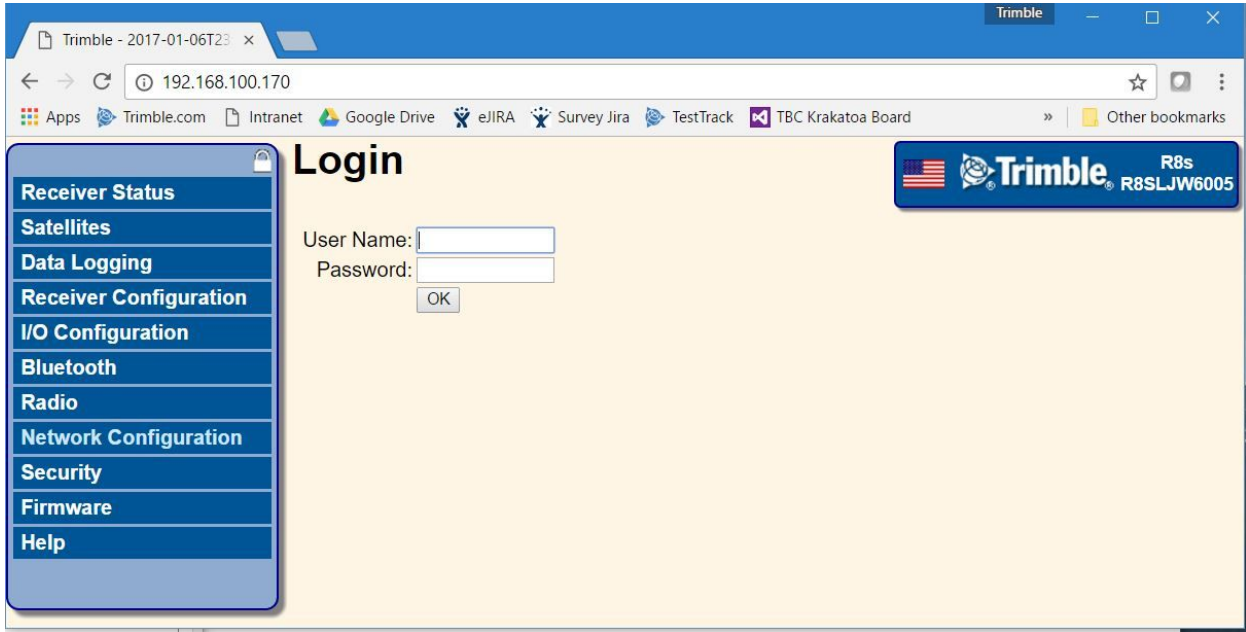
- Next to your dial-up connection, click on the blue *Dial-up Connection* link. One of the following screens will appear:



11. In the *Details* tab, note the *Server IPv4 address* or in the *Network Connection Details* tab, note the *IPv4 DNS Server address*. This is the IP address to connect to the receiver WebGUI.
12. Enter the IP address in your browser. When the login screen appears, enter the user name and password. The default settings for a Trimble GNSS receiver are:

User Name: admin

Password: password



13. Click **OK**. You are now connected to your receiver through the WebGUI.