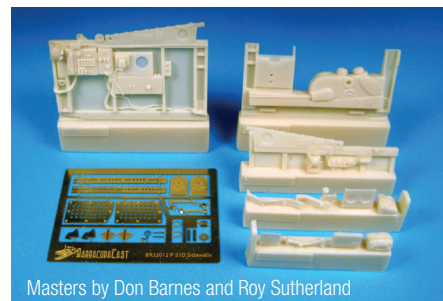




BR32012 P-51D Mustang Cockpit Sidewalls

Designed for the 1/32 Tamiya
P-51D Mustang Series

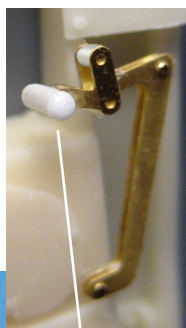
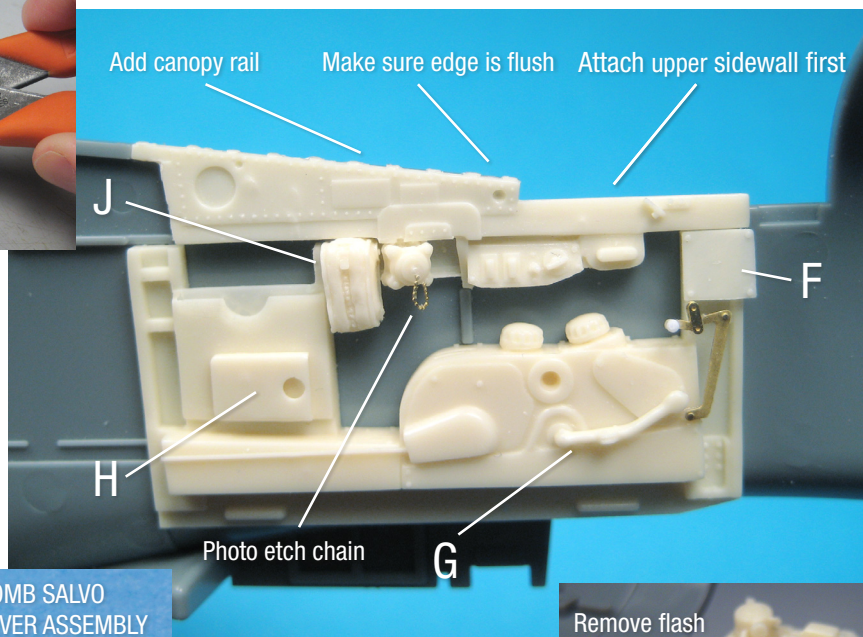
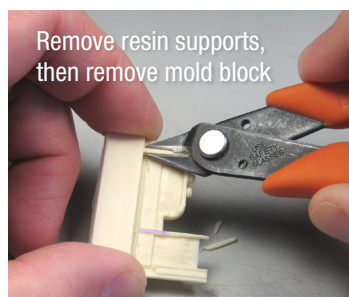


Masters by Don Barnes and Roy Sutherland

This set contains parts to directly replace the cockpit sidewalls in the 1/32 Tamiya P-51D Mustang. There are some small parts that are quite fragile, as well as some tiny photo-etched parts, so reading these instructions just might come in handy. Included are etched parts to replace the breather plates on the lower cowling and uplocks for the main gear bay.

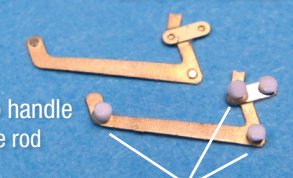
1. Remove the main cockpit sidewall parts from the molding blocks by sawing or repeated light passes with a hobby knife. Open up the flashed over hole on the starboard sidewall. Paint the back of this area black. Paint the fuselage sidewall behind this hole the interior color. Cleanup the parts and test fit to the kit fuselage halves.
2. When satisfied, attach sidewall parts to fuselage halves with Cyanoacrylate.
3. Carefully remove and cleanup the four small resin parts for the port sidewall and test fit. Paint the landing gear handle red and canvas bag khaki and set aside. Attach the small map case and small etched parts.
4. Carefully remove and cleanup the four small resin parts and etched ring for the starboard sidewall and test fit. The small box is an IFF unit usually seen in post-war Mustangs. Paint the canopy jettison handle red, the canopy crank black and set aside.
5. Remove etched canopy rails and fold as shown. Attach to the top of the sidewalls using Cyanoacrylate or 5 Minute Epoxy. Remove rudder pedal inserts and force down into the kit rudder pedals with the tip of an eraser. Burnish down lower portion and attach. Add etched uplocks to the gear bays as shown.
6. Etched breather plates have been supplied for the lower engine cowling. Carefully bend to shape, fitting as you go. Some shimming of the kit parts will be necessary to get them to sit flush.
7. Paint all parts according to references. We highly recommend the use of BarracudaCals BC32010 P-51D Mustang Cockpit Stencils and Placards, with over 100 tiny decals that will bring all this detail to life.

Happy modelling!



BOMB SALVO
LEVER ASSEMBLY

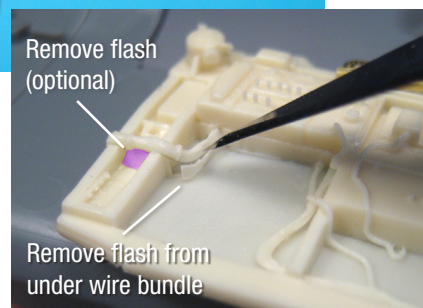
Make salvo handle
from styrene rod

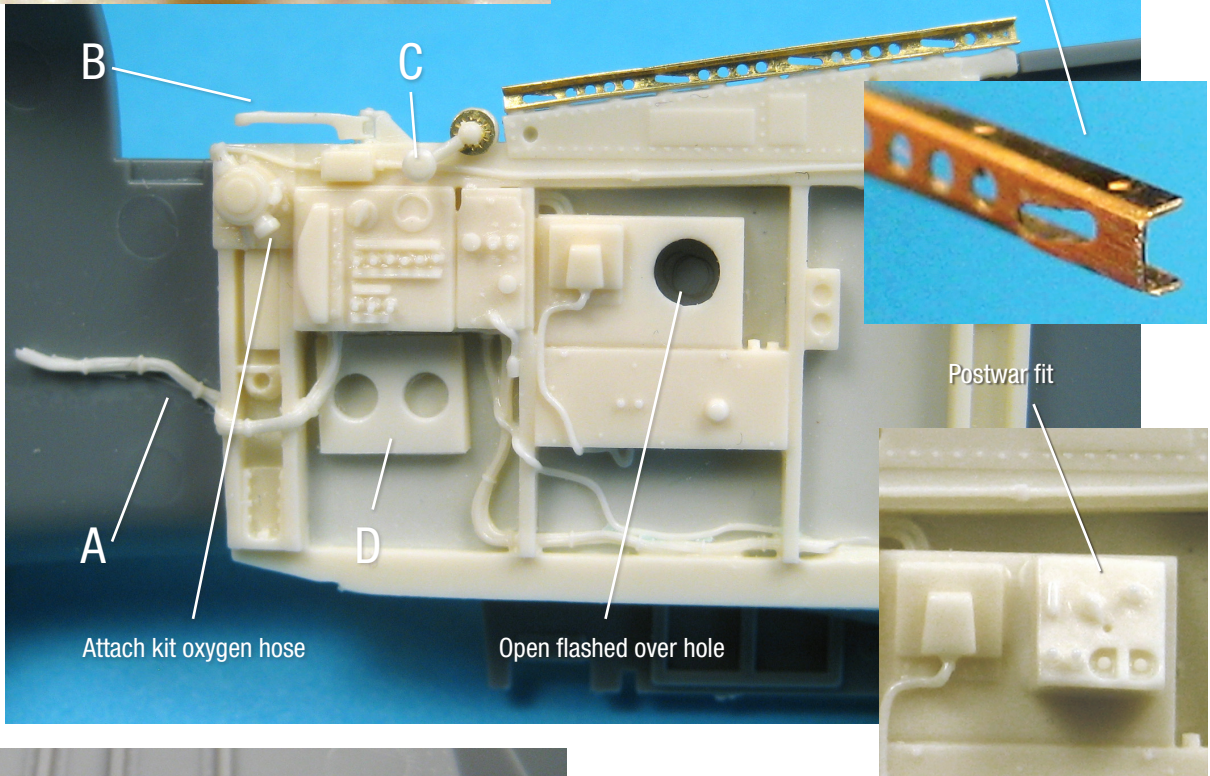
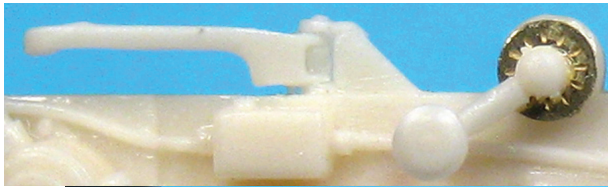
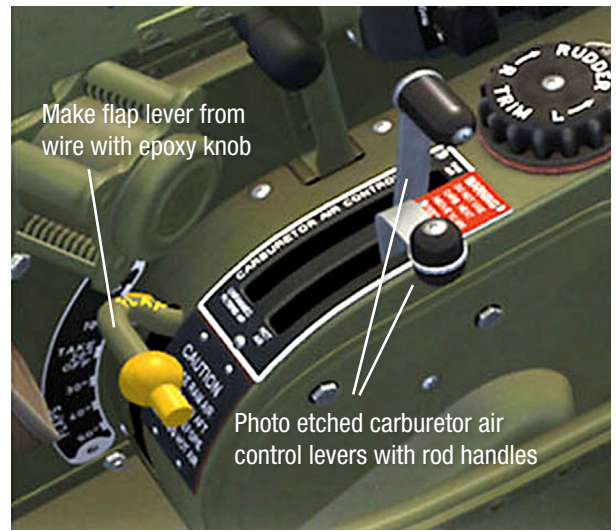
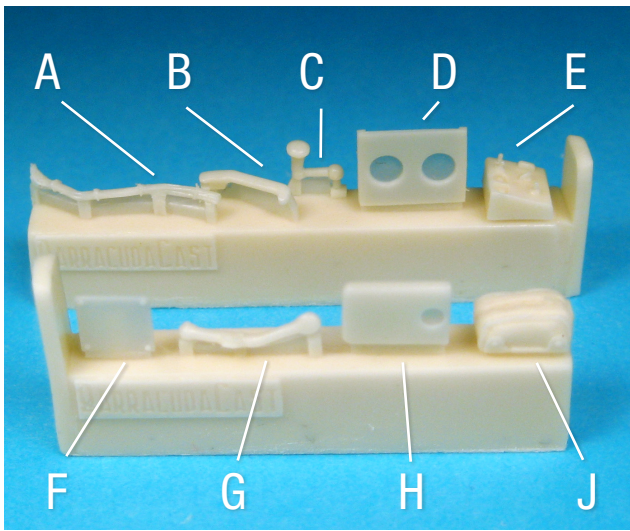


Add .015" thick spacer disks
from styrene rod or sheet

Remove flash
(optional)

Remove flash from
under wire bundle





Many thanks to Christian Alamy and Pascal Gerat for their invaluable help in research.

To view out other products visit our website at www.barracudacals.com

Installation Addendum

1. To get the kit floor to install properly to the new resin starboard sidewall, a simple modification to the kit floor is necessary.
2. Install the kit sidewall as shown below.
3. Trim the kit floor as shown the image below.
4. Test fit the sidewall to the floor as you go.
5. Assemble rest of detail set per instructions.

Download a larger version of this at barracudacal.com

