



**“SPECIALIZING IN SUSPENSION COMPONENTS”**

- BIRDCAGES • TWO LINK BRACKETS • BRAKE FLOATERS • PULL BARS • CHAIN HANGERS •
- PINION PLATES • CALIPER BRACKETS • PULL BAR BRACKETS • J-BARS •



**PRODUCT CATALOG 2024**

**HOW TO ORDER:**  
 Phone: 707-515-0226  
 Online: www.cptracingmfg.com  
 Email: ccompton@cptracingmfg.com  
 TEXT: 707-515-0226

**HOURS:**  
 MONDAY-SATURDAY 8:00 AM TO 5 PM P.S.T.  
 TEXT: ANYTIME 707-515-0226

**ADDRESS:**  
 1201 EAST MACARTHUR ST #3, SONOMA, CA 95476.


**PRICING:**  
 PRICING SUBJECT TO CHANGE WITHOUT NOTICE.  
 ALL PURCHASES MUST BE PREPAID.  
 NSF CHECKS HAVE A \$35.00 SERVICE CHARGE. ALL FUTURE PURCHASES WILL BE CREDIT CARD  
 AND OR CASH ONLY.

**RETURNS:**  
 PROOF OF PURCHASE REQUIRED.  
 NO RETURNS AFTER 30 DAYS.  
 10 PERCENT RESTOCKING FEE ON ALL RETURNS.  
 ALL FREIGHT IS TO BE PAID BY PURCHASER.

**We're Here To Help You.**



**Your CPT MFG distributor is ready to help and you should contact them first. However, if you have a problem or question that has not been resolved, please contact CPT MFG at: (707) - 515-0226**

 **WARNING:** This product can expose you to chemicals which are known to the State of California to cause cancer. For more information, go to [www.P65Warnings.ca.gov](http://www.P65Warnings.ca.gov)

**DISCLAIMER OF WARRANTY AND LIMITATION OF LIABILITY**

CPT Racing MFG ("CPT") products and each part thereof, are sold "AS IS" and with all faults. To the fullest extent allowed by law, CPT makes NO written, oral, expressed, or implied statement of warranty or guarantee on any product or part sold. CPT will not be liable for any direct, indirect, incidental, consequential, or special damages, including but not limited to, damage, injury, loss of life, loss of property or equipment, loss of profits or revenue, or claims from any individual or entity arising from the use of any CPT product.

**WARNING**

RACING IS A DANGEROUS ACTIVITY, PURCHASERS OF CPT PRODUCTS ACKNOWLEDGE THE INHERENT RISKS ASSOCIATED. CPT MAKES NO REPRESENTATIONS ITS PRODUCTS CAN REDUCE OR ELIMINATE ANY SUCH RISK. CPT products are NOT FOR STREET / HIGHWAY USE. The user shall determine the ultimate suitability and safety of the product for its intended use and the user assumes all responsibility and risk in connection therewith.

**TABLE OF CONTENTS**



	<b>PAGE</b>
<b>NEW PRODUCTS.....</b>	<b>4</b>
<b>SUSPENSION CAGES - BIRDCAGES.....</b>	<b>6</b>
<b>HEAVY CAGES, BRAKE FLOATERS AND CALIPER BRACKETS.....</b>	<b>12</b>
<b>2 LINK BRACKETS - 3" AXLE TUBE.....</b>	<b>14</b>
<b>MOD LITE SUSPENSION COMPONENTS.....</b>	<b>16</b>
<b>SUSPENSION CAGE AND 2 LINK PLATES.....</b>	<b>18</b>
<b>SHOCK MOUNT OPTIONS AND CAGE ACCESSORIES.....</b>	<b>20</b>
<b>BRAKE FLOATERS AND CALIPER BRACKETS.....</b>	<b>22</b>
<b>CHAIN HANGERS.....</b>	<b>24</b>
<b>FRAME MOUNTS.....</b>	<b>25</b>
<b>PINION PLATES / WELD ON REAR END MOUNTS.....</b>	<b>26</b>
<b>PULL BAR BRACKETS.....</b>	<b>28</b>
<b>J BARS.....</b>	<b>30</b>
<b>CHASSIS FRAME ACCESSORIES.....</b>	<b>31</b>
<b>TORQUE LINKS / PULL BARS.....</b>	<b>32</b>
<b>GM BUSHINGS AND BISCUITS.....</b>	<b>34</b>
<b>SPRING SLIDERS.....</b>	<b>36</b>
<b>SPRING CUPS AND JACK BOLTS.....</b>	<b>39</b>
<b>SUSPENSION TUBES.....</b>	<b>42</b>
<b>COIL OVER KITS .....</b>	<b>43</b>
<b>LIFT ARMS.....</b>	<b>44</b>
<b>TOOLS.....</b>	<b>46</b>
<b>CPT RACING MFG MERCHANDISE.....</b>	<b>47</b>

**SPECIAL / CUSTOM BUILDS  
 ARE AVAILABLE UPON  
 REQUEST !!!**



## NEW PRODUCTS

### 4 BAR CHASSIS CLIMBER BRACKET CPT-3550

MAKE BAR ADJUSTMENTS EASY WITH OUR 4-BAR CLIMBER CHASSIS BRACKET. FACTORY MARKED HOLE LOCATION AND EXTRA WIDE SPACERS FOR NO SLIP. INCLUDES ALL NUTS, BOLTS AND SPACERS.

ALSO AVAILABLE FOR LIGHTNING CHASSIS AND GRT BHE CHASSIS. WE CAN ALSO MAKE THESE PLATES FOR ANY OTHER CHASSIS., PLEASE CALL US TO DISCUSS.



CHASSIS CLIMBER PLATE  
SHAW CHASSIS  
CPT-3550-S

### REAR END SWIVEL SHOCK

REAR END SWIVEL SHOCK MOUNT FOR CLAMPING TO A 3" TUBE. LOCKING BOLT. ALL SPACERS, NUTS AND BOLTS INCLUDED

CPT-735



### MT SERIES SHOCK

SIMPLE AND RUGGED DESIGN ALLOWS FOR A COST EFFECTIVE SHOCK WITH THE HIGH QUALITY DAMPENING COMPONENTS SUCH AS OUR 7075 AIRCRAFT ALUMINUM PISTONS TO PROVIDE CONSISTENCY AND RELIABILITY

THE MT SERIES MONO TUBE GAS SHOCK IS A HIGH-PERFORMAMCE ALTERNATIVE TO OTHER STEEL SHOCKS ON THE MARKET. THE 46 MM PISTON ALLOWS FOR MANY BUILD OPTIONS TO SATISFY YOUR RACING NEEDS.



THE STANDARD RACING SHOCK COMES WITH HIGH FLOW DIGRESSIVE OR LINEAR PISTONS.

#### FEATURES:

- REBUILDABLE
- CONSISTENT PERFORMANCE
- STEEL COMPONENTS
- NICKEL PLATED FOR INCREASED HEAT DISSIPATION.
- 1/2" SHAFT FOR LOW ROD FORCE
- CHROME PLATED SHAFT
- 46MM BORE PISTON OPTIONS
- 7075 AIRCRAFT ALUMINUM PISTON AND BASE VALVE
- NON ADJUSTABLE - FIXED SHAFT BLEED JET

#### OPTIONS:

- BASE VALVE
- 7.0" AND 9.0" STROKE
- STANDARD OR 1.0" OR 2.0" EXTENDED EYELETS
- COIL-OVER KIT ADAPTABLE.
- SCHRADER VALVE OR IMCA FILL PORT.



**MAKE BAR ADJUSTMENTS EASY!**

# SUSPENSION CAGES - STEEL MODULAR

## CPT RACING MFG BIRDCAGES....

.....HAVE BIND FREE STEEL BEARING INSERT, DOUBLE SHEAR DESIGN, ADJUSTABLE SHOCK DROP AS WELL AS QUICK RADIUS ROD MOUNTING ADJUSTMENT HOLES.

THESE CNC, LASER CUT, BIRDCAGES ARE DESIGNED FOR RUGGED CONDITIONS, QUICK AND EASE OF ADJUSTABILITY, AND LOW MAINTENANCE TO HELP YOU GET TO THE WINNERS CIRCLE.

WE ALSO CAN BUILD ANY SPECIAL NEEDS OR OPTIONS UPON REQUEST!!!!

### DOUBLE SHEAR MODULAR BIRDCAGE

#### SIMPLE AND RUGGED DESIGN

#### STANDARD STEEL BIRDCAGE:

- MACHINED CENTER SECTION.
- ALL SWIVEL SHOCK MOUNTS.
- ADJUSTABLE SHOCK DROP, 4-7 INCHES  
In 1 INCH INCREMENTS.
- 4 BAR QUICK ADJUSTABLE MOUNTING HOLES.
- STEEL OR BRONZE TYPE BEARING INSERTS.
- LASER CUT AND RUGGED DESIGN.
- CUSTOM BUILD OPTIONS UPON REQUEST.
- LIGHT WEIGHT DESIGN.
- "WORRY FREE" RETAINING RINGS.
- ALL HARDWARE / SPACERS INCLUDED .



CPT-305

CPT-305 MODULAR BIRDCAGE



NICK SNELL #17  
JAMESTOWN, OH

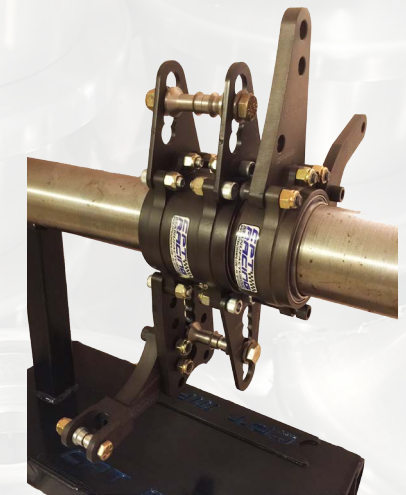
## STEEL NARROW DOUBLE SHEAR STEEL BEARING CAGE

NARROW MODULAR BIRDCAGE W/ STEEL BEARINGS, 2 RETAINING RINGS, ALL NUTS, BOLTS, SPACERS INCLUDED. (SHOCK/SPRING MOUNTS SOLD SEPARATELY).

CPT-305



CPT-305



### LOCKABLE TO ANY CPT BRAKE FLOATER

ALL CPT CAGES ARE LOCKABLE TO ANY CPT BRAKE FLOATER. A BOLT KIT ALLOWS THIS OPTION TO BE ADDED. CPT-10850

## STEEL DOUBLE SHEAR BRONZE BEARING CAGE

NARROW MODULAR BIRDCAGE W/ BRONZE BEARINGS, 2 RETAINING RINGS, ALL NUTS, BOLTS, SPACERS INCLUDED. (SHOCK/SPRING MOUNTS SOLD SEPARATELY).

CPT-320



CPT-320



**NEW !!!**

**CLIMBER SUSPENSION CAGE  
(PATENT NO. US 10,981,425 B1)**

NARROW MODULAR CLIMBER BIRDCAGE W/ STEEL BEARINGS, 2 RETAINING RINGS, ALL NUTS, BOLTS, SPACERS AND CLIMBER NUTS INCLUDED. (SHOCK/SPRING MOUNTS SOLD SEPARATELY).

**CPT-305C**

**FASTEST ADJUSTABLE CAGE  
ON THE MARKET !!!  
INFINITE ADJUSTABILITY !!!  
(U.S. PATENT 10,981,425)**



**CPT-305C**



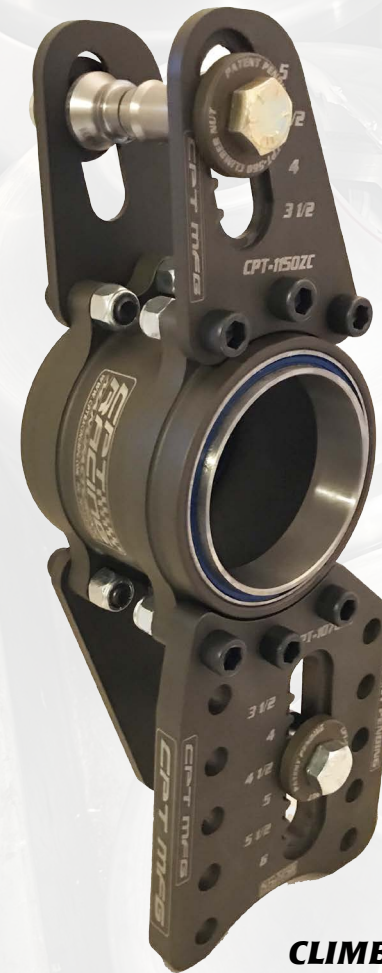
**CPT-305C**

**ZERO INDEX CAGE**

ZERO INDEX MODULAR BIRDCAGE. ONE INCH OFFSET. COMES WITH STEEL BEARINGS, 2 RETAINING RINGS, ALL NUTS, BOLTS SPACERS AND LOCKING RING INCLUDED. (SHOCK/SPRING MOUNTS SOLD SEPARATELY).

**CPT-305Z**

**FASTEST ADJUSTABLE CAGE  
ON THE MARKET!!! LOOSEN,  
ADJUST, TIGHTEN.  
(U.S. PATENT 10,981,425)**



**CLIMBER ZERO INDEX CAGE.  
CPT-305ZC**



**ZERO INDEX CAGE  
CPT-305ZC**

**CLIMBER ZERO INDEX CAGE  
(PATENT NO. US 10,981,425 B1)**

ZERO INDEX MODULAR BIRDCAGE. ONE INCH OFFSET. COMES WITH STEEL BEARINGS, 2 RETAINING RINGS, ALL NUTS, BOLTS SPACERS AND LOCKING RING INCLUDED. (SHOCK/SPRING MOUNTS SOLD SEPARATELY).

**CPT-305Z**

**NEW !!!!**

**FRONT CENTER PULL BIRDCAGE**

NARROW MODULAR CLIMBER BIRDCAGE W/ STEEL BEARINGS, 2 RETAINING RINGS, ALL NUTS, BOLTS, AND SPACERS INCLUDED. (SHOCK/SPRING MOUNTS SOLD SEPARATELY).

**CPT-305CP**



**CPT-305CP**



**CPT-308**

**LEFT REAR CLAMPING SHOCK / SPRING MOUNT W/ ALL SWIVEL SHOCK MOUNT**

LEFT REAR CLAMPING SHOCK / SPRING MOUNT WITH ONE ALL SWIVEL SHOCK MOUNT, MODULAR, WITH LOCKING CLAMP BOLTS, (5/8" WIDE).

**CPT-308**

**DOUBLE SHEAR SHOCK MOUNT SUSPENSION CAGE**

MODULAR DOUBLE SHEAR BIRDCAGE W/ 4 STEEL BEARINGS, 2 RETAINING RINGS, DOUBLE SHEAR SHOCK PLATES WITH SHOCK SPACERS, ALL NUTS BOLTS AND SPACERS INCLUDED. (5-3/4" WIDE), (SHOCK/SPRING MOUNTS SOLD SEPARATELY)

**CPT-310**

**SHOCK MOUNT ADJUSTABLE FROM RIGHT TO LEFT!!!**

**DECREASE CAGE DEFLECTION WITH THE DOUBLE SHEAR SHOCK MOUNT!**



**CPT-310**



**JON DEBENEDETTI #21J  
WHITE CITY, OR**

## HEAVY CAGES, 2 LINKS & BRAKE FLOATERS

### HEAVY 2 LINK, 32 LBS.

HEAVY (32 LBS) WIDE MODULAR 2 LINK WITH ALL NUTS, BOLTS AND SPACERS INCLUDED. (SHOCK/SPRING MOUNTS SOLD SEPARATELY).

**CPT-905H**



**CPT-905H**



**CPT-905MLH**

### MOD LITE HEAVY 2 LINK, 24 LBS.

HEAVY (24 LBS) WIDE MODULAR 2 LINK. ALL NUTS, BOLTS, SPACERS INCLUDED. FOR 2-1/2" TUBE. (SHOCK/SPRING MOUNTS SOLD SEPARATELY).

**CPT-905MLH**

### HEAVY BRAKE FLOATER, 13 LBS.

DOUBLE BEARING, 2" WIDE W/ RETAINING RINGS.



**CPT-545H**

### HEAVY BRAKE FLOATERS.....

.....ARE DOUBLE BEARING DESIGN. THE OVERALL WIDTH FROM BEARING TO BEARING IS 2 INCHES. THESE ARE AVAILABLE FOR SMALL GM CALIPERS AND SUPERLITE



## HEAVY CALIPER BRACKETS

### HEAVY STEEL BEARING CAGE, 39LBS.

HEAVY (39 LBS) WIDE MODULAR BIRDCAGE W/ 2 STEEL BEARINGS, 2 RETAINING RINGS, ALL NUTS, BOLTS, AND SPACERS INCLUDED. (SHOCK/SPRING MOUNTS SOLD SEPARATELY).

**CPT-305HH**

### CLAMPING WEIGHT BALLAST

3 INCH ID, 23 POUNDS - REAR END

**CPT-10230**



**CPT-10230**



**CPT-570H**

### HEAVY MODULAR GM BRAKE CALIPER BRACKET, 8 LBS.

**CPT-570H**

### HEAVY ZERO INDEX CAGE 34 LBS

HEAVY (34 LBS) WIDE MODULAR BIRDCAGE W/ 2 STEEL BEARINGS, 2 RETAINING RINGS, ALL NUTS, BOLTS, SPACERS INCLUDED. (SHOCK/SPRING MOUNTS SOLD SEPARATELY).

**CPT-305HZ**



**CPT-305HH**



**CPT-305HZ**

# 2 LINK SUSPENSION BRACKETS - 3" AXLE TUBE

## STANDARD DOUBLE SHEAR MODULAR 2 LINK BRACKETS

NARROW MODULAR 2 LINK BRACKETS W/ ONE ALL SWIVEL MOUNT, ALL NUTS, BOLTS, AND SPACERS INCLUDED.

**CPT- 905M**



**CPT- 905M**

**SPECIAL / CUSTOM  
BUILDS ARE AVAILABLE  
UPON REQUEST !!!**

## FRONT CENTER PULL MODULAR 2 LINK BRACKETS

NARROW MODULAR 2 LINK BRACKETS W/ ONE ALL SWIVEL MOUNT, ALL NUTS, BOLTS, AND SPACERS INCLUDED.

**CPT- 907M**



**CPT- 907M**



**BRIAN NANTZ #22  
CORBIN, KY**

## CLIMBER MODULAR 2 LINK BRACKET. (U.S. PATENT 10,981,425)

CLIMBER NARROW MODULAR 2 LINK BRACKETS W/ ONE ALL SWIVEL MOUNT, ALL NUTS, BOLTS, AND SPACERS INCLUDED.

**CPT- 905C**

**FASTEST ADJUSTABLE CAGE  
ON THE MARKET !!!  
INFINITE ADJUSTABILITY !!!  
(U.S. PATENT 10,981,425)**



**CPT-905C**



**CPT- 905Z**

## ONE INCH FORWARD MODULAR HOUSING DOUBLE SHEAR 2 LINK

NARROW MODULAR 2 LINK BRACKETS W/ ONE ALL SWIVEL MOUNT, ALL NUTS, BOLTS, AND SPACERS INCLUDED.

**CPT- 905Z**



**CPT- 905CZ**

## CLIMBER 1" FORWARD 2 LINK (PATENT NO. US 10,981,425 B1)

NARROW MODULAR 2 LINK BRACKETS W/ ONE ALL SWIVEL MOUNT, ALL NUTS, BOLTS, AND SPACERS INCLUDED.

**CPT- 905CZ**

**WELDED SHOCK MOUNTS ARE AVAILABLE UPON REQUEST !!!**



# MOD LITE 2 LINK SUSPENSION

## MOD LITE 2 LINK BRACKET

NARROW ALL STEEL, MODULAR HOUSING FOR 2-1/2" TUBE. ONE ALL SWIVEL MOUNT, ALL NUTS, BOLTS, AND SPACERS INCLUDED.

**CPT- 905ML**



**CPT- 905ML**



**CPT- 905ML-AL**

## MOD LITE 2 LINK BRACKET

NARROW ALUMINUM PLATES, STEEL MODULAR HOUSING FOR 2-1/2" TUBE. ONE SWIVEL MOUNT, ALL NUTS, BOLTS, AND SPACERS INCLUDED. WEIGHS ONLY 5 POUNDS.

**CPT- 905ML-AL**

## MOD LITE 2 LINK BRACKET WITH CALIPER BRACKET

NARROW ALL STEEL, MODULAR HOUSING FOR 2-1/2" TUBE. ONE ALL SWIVEL MOUNT, ALL NUTS, BOLTS, SPACERS AND CALIPER PLATE INCLUDED.

**CPT- 905ML-C**



**CPT- 905ML-C**



**CPT- 905ML-CAL**

## MOD LITE 2 LINK BRACKET WITH CALIPER BRACKET

NARROW ALUMINUM PLATES, STEEL MODULAR HOUSING FOR 2-1/2" TUBE. ONE SWIVEL MOUNT, ALL NUTS, BOLTS, SPACERS AND CALIPER PLATE INCLUDED. .

**CPT- 905ML-CAL**

## MOD LITE HEAVY 2 LINK, 24 LBS.

HEAVY (24 LBS) 4" WIDE MODULAR 2 LINK. ALL NUTS, BOLTS, SPACERS INCLUDED. FOR 2-1/2" TUBE. (SHOCK/SPRING MOUNTS SOLD SEPARATELY).

**CPT-905MLH**



**CPT-905MLH**



## MOD LITE MODULAR CLAMPING BRAKE CALIPER BRACKET

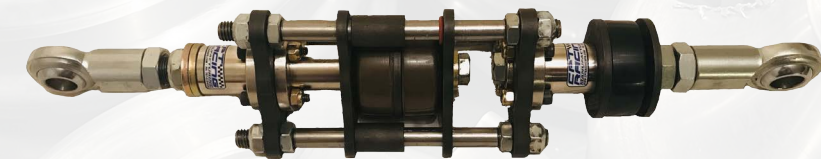
THESE ARE 5/8" WIDE CLAMPING RINGS, MODULAR 3/8" THICK CALIPER PLATES TO IMPROVE BRAKE PERFORMANCE.

**CPT-560**

## CPT MFG GRIPPER™ MINI BISCUIT DUAL SHAFT PULL BAR

SPECIALLY DESIGNED FOR DWARF LEGEND AND MOD LITE RACE CARS. 18 INCH HEIM TO HEIM FOR SHORTEST LENGTH. PLEASE SPECIFY TOTAL LENGTH WHEN ORDERING. 3/4" TO 1/2" HEIM REDUCERS ARE ALSO INCLUDED. ADJUSTABLE LOCK OUT.

**CPT-833**



## CPT MFG GRIPPER™ PUSH BAR

SPECIALLY DESIGNED FOR DWARF LEGEND AND MOD LITE RACE CARS. 18 INCH HEIM TO HEIM FOR SHORTEST LENGTH. PLEASE SPECIFY TOTAL LENGTH WHEN ORDERING. 3/4" TO 1/2" HEIM REDUCERS ARE ALSO INCLUDED. ADJUSTABLE LOCK OUT.

**CPT-836**



# SUSPENSION CAGE AND 2 LINK PLATES



**TOP PLATE  
CPT-1130**



**BOTTOM PLATE  
CPT-1020**



**BOTTOM PLATE  
CPT-1011**



**LONG TOP PLATE  
CPT-1132**



**TOP PLATE  
ZERO CLIMBER  
CPT-1130ZC**



**BOTTOM PLATE  
ZERO CLIMBER  
CPT-1120ZC**



**BOTTOM PLATE  
ZERO CLIMBER  
CPT-1011ZC**



**TOP PLATE  
CLIMBER CPT-1130C**



**BOTTOM PLATE  
CLIMBER CPT-1120C**



**BOTTOM PLATE  
CLIMBER CPT-1011C**



**LONG BAR  
BOTTOM PLATE  
CPT-1120L**



**LONG BAR  
BOTTOM PLATE  
CPT-1011L**



**BOTTOM PLATE  
FRONT CENTER PULL  
CPT-930**



**BOTTOM PLATE  
FRONT CENTER PULL  
CPT-920**



**TOP PLATE  
ZERO INDEX  
CPT-1130Z**



**BOTTOM PLATE  
ZERO INDEX  
CPT-1020Z**



**BOTTOM PLATE  
ZERO INDEX  
CPT-1011Z**



**BRODY BOWSER #78  
IONIA, MI**



"SPECIALIZING IN SUSPENSION COMPONENTS"

• BIRDCAGES • TWO LINK BRACKETS • BRAKE FLOATERS • PULL BARS • CHAIN HANGERS •  
• PINION PLATES • CALIPER BRACKETS • PULL BAR BRACKETS • J-BARS •



**BOTTOM PLATE  
FRONT CENTER PULL  
CPT-930**



**BOTTOM PLATE  
FRONT CENTER PULL  
CPT-920**

# SHOCK MOUNT OPTIONS

**CPT RACING MFG.....**Shock mounts have machined billet clevis' with taper bolts, acting as a bearing to ensure superior strength and bind free movement as possible. Also these come standard with 7/16 inch bolts and High Misalignment spacers for even more bind free ability. These are designed to be the strongest, bind free, and most reliable shock mounts available.

## SHOCK MOUNT - 2 BOLT

SHOCK/ SPRING MOUNT ASSEMBLY - MACHINED CLEVIS, MOUNTING BRACKET, NUTS AND BOLTS, AND SPACERS INCLUDED.

CPT-240-2



CPT-240-2

CPT-240-3



## SHOCK MOUNT - 3 BOLT

SHOCK/ SPRING MOUNT ASSEMBLY - MACHINED CLEVIS, MOUNTING BRACKET, NUTS AND BOLTS, AND SPACERS INCLUDED.

CPT-240-3

CPT-240B



## SHOCK MOUNT - WITH BEARING

BEARING SWIVEL SHOCK/ SPRING MOUNT ASSEMBLY, MACHINED CLEVIS, MOUNTING BRACKET, NUTS AND BOLTS, AND SPACERS INCLUDED.

CPT-240B

CPT-244



CPT-244

# CAGE ACCESSORIES

## SPACERS:



CPT-102



CPT-101



CPT-1105



CPT-1100



CPT-1110

CPT-420

**BIRDCAGE / BRAKE FLOATER REPLACEMENT BEARING.**

CPT-531

**BIRDCAGE / BRAKE FLOATER LOCKING TUBE CLAMP.**

CPT-410M

**"WORRY FREE" RETAINING RING WITH BEARING GROOVE, 3 INCH I.D.**

CPT-1100

**5/8" TO 1/2" HIGH MISALIGNMENT SPACER (1.75" OPENING) EACH.**

CPT-1110

**1/2" ID HAT SPACER FOR CAGE OUTER EAR - STAINLESS STEEL**

CPT-1105

**1/2" TO 3/8" HIGH ANGLE REDUCER (1" OPENING) EACH.**

CPT-102

**HIGH MISALIGNMENT STAINLESS STEEL SPACER - CAGE- LONG.**

CPT-101

**HIGH MISALIGNMENT STAINLESS STEEL SPACER - CAGE- SHORT.**

CPT-10850

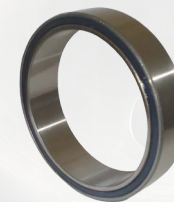
**CLAMP CAGE TO BRAKE FLOATER BOLT KIT**

CPT-1151

**AXLE TUBE SPACER - 3" ID X .125" THICK**

CPT-1152

**AXLE TUBE SPACER - 3" ID X .375" THICK**



CPT-420



CPT-531



CPT-1152



CPT-410M



CPT-10850



CPT-308

# BRAKE FLOATERS

**CPT RACING MFG.... STEEL BRAKE FLOATERS ARE AVAILABLE IN A DOUBLE BEARING DESIGN. THE DOUBLE BEARING OVERALL WIDTH FROM BEARING TO BEARING IS 2 INCHES.**

THESE ARE AVAILABLE FOR SMALL GM CALIPER. HEAVY AND STANDARD WEIGHT AS WELL. THE UPPER HOLES ARE OFFSET 1 INCH BACK FROM THE CENTER LINE AND ARE 5-1/2" AND 6-1/2" UP FROM THE CENTER LINE OF THE AXLE HOUSING.

ALSO THESE BRAKE FLOATERS ARE DESIGNED TO BOLT DIRECTLY TO ANY CPT RACING MFG CAGE. BOLT KITS ARE AVAILABLE, CPT-10850. RETAINING RINGS ARE INCLUDED.

## BRAKE FLOATER (DOUBLE BEARING)

2" WIDE W/ RETAINING RINGS



DOUBLE SHEAR BRAKE FLOATER  
**CPT -546**



**CPT -545**

SINGLE SHEAR BRAKE FLOATER  
**CPT -545**



**CPT -1141**

MODULAR SMALL GM SMALL METRIC CALIPER BRACKET  
3/8 INCH THICK.

**CPT -1141**



**CPT -531**

LOCKING CLAMP FOR BIRDCAGE OR BRAKE FLOATER

**CPT -531**

CLAMP CAGE TO FLOATER BOLT KIT  
**CPT -10850**



# CALIPER MOUNTS

## MODULAR CLAMPING/LOCKING SMALL GM BRAKE CALIPER BRACKET HEAVY DUTY

THESE ARE 5/8 INCH WIDE CLAMPING RINGS, WITH REPLACEABLE 3/8 INCH THICK CALIPER PLATES TO IMPROVE BRAKE PERFORMANCE AND ALLOWS REPLACEMENT AT THE TRACK.

**CPT-570**



**CPT -570**



**NICK DECARLO #17  
MARTINEZ, CA**

## MODULAR CLAMPING SUPER-LITE BRAKE CALIPER BRACKET

THESE ARE 5/8" WIDE CLAMPING RINGS, MODULAR 3/8" THICK CALIPER PLATES TO IMPROVE BRAKE PERFORMANCE.

**CPT-1142**



**CPT-1142**



**CPT-560**

## MOD-LITE MODULAR CLAMPING BRAKE CALIPER BRACKET

THESE ARE 5/8" WIDE CLAMPING RINGS, MODULAR 3/8" THICK CALIPER PLATES TO IMPROVE BRAKE PERFORMANCE.

**CPT-560**



## CHAIN HANGERS / LIMITERS AND REAR END MOUNTS

### CHAIN LIMITERS

1-1/4", 1-1/2", 1-3/4" TUBE CLAMP SIZES



BISCUIT  
CPT-752



QUICK ADJUST  
BELLEVILLE SPRING  
HEIM MOUNT  
CPT-760



QUICK ADJUST  
HEIM MOUNT  
CPT-753



CHAIN LIMITER - STEEL  
BEARING, 3 INCH ID.  
RETAINING RINGS INLCUDED  
CPT-700



CHAIN LIMITER - DOUBLE  
CLAMP, 3 INCH ID.  
CPT-722



QUICK ADJUST  
TUBE CLAMP  
CPT-751



LEFT FRONT  
BOLT ON  
CHAIN MOUNT  
CPT-749

LEFT FRONT WELD ON  
CHAIN MOUNT  
CPT-744



LIMIT CHAIN W/ SHRINK WRAP  
CPT-9230

## FRAME MOUNTS

INSIDE MOUNT - 1-1/2" AND 2" SQ. TUBE MOUNTS  
CPT-6010-1-1/2 & CPT-6010-2

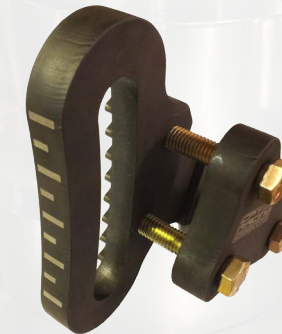
CPT-6010



CPT-6750



3 HOLE CHASSIS MOUNT  
1-1/2" & 2" - CPT-6750



SIDE MARKS FOR EASY  
ADJUSTMENT VIEWING

CPT-6000



CENTER MOUNT  
1-1/2" AND 2" SQ. TUBE.  
CPT-6000

CPT-6750-BMS



3 HOLE CHASSIS MOUNT - OFFSET  
1-1/2" & 2" - CPT-6750-BMS



CLIMBER MOUNT HARDWARE KIT  
CPT-645 FOR  
INSIDE MOUNT

CPT-6560 FOR  
CENTER MOUNT



IRA COMPTON #81  
CHICO, CA

## SPORT MOD PANHARD BAR MOUNTS



FORD 9 INCH 3 SLOT CLIMBER WELD ON.  
CLIMBER HARDWARE INCLUDED.  
**CPT-6700**



FORD 9 INCH 2 SLOT CLIMBER WELD ON.  
CLIMBER HARDWARE INCLUDED.  
**CPT-6701**



SPORT MOD - 3 BOLT FRAME MOUNT - STEEL CLIMBER FOR REAR PANHARD BARS.  
FOR 1-1/2" TUBE. 3 INCHES OF TRAVEL. ALL CLIMBER HARDWARE INCLUDED - 1-1/2"  
AND 2" SQ. TUBE MOUNTS  
**CPT-6020**



**SHELBY ALVES #1s**  
**SIoux FALLS, SD**

## PINION PLATES

PINION PLATE- QUICK CHANGE - 3/4" THICK CLIMBER SINGLE SIDE STEEL, 12 HOLE,  
BOLT, SPACER, BACK NUT AND CLIMBER GEAR NUT INCLUDED.



STEEL PINION PLATE (2 PIECE) -  
QUICK CHANGE. HARDWARE KIT  
INCLUDED. **CPT-650**



STEEL PINION PLATE W/SEAL (SOLID) - QUICK  
CHANGE. HARDWARE KIT INCLUDED.  
**CPT-653**



STEEL PINION PLATE - FORD 9  
INCH. HARDWARE KIT INCLUDED.  
**CPT-655**



"SPECIALIZING IN SUSPENSION COMPONENTS"  
• BIRDCAGES • TWO LINK BRACKETS • BRAKE FLOATERS • PULL BARS • CHAIN HANGERS •  
• PINION PLATES • CALIPER BRACKETS • PULL BAR BRACKETS • J-BARS •



CLIMBER MOUNT HARDWARE KIT  
**CPT-645**

**FOR ALL PINION PLATES AND  
WELD ON PLATES**



# PULL BAR BRACKETS

## QUICK CHANGE PULL BAR BRACKETS

1/4 INCH THICK PLATES.



LOW PROFILE - QUICK CHANGE PULL BAR BRACKETS (PAIR) 1-3 INCH SET BACK OR SET FORWARD - REVERSIBLE!

**CPT-820**



QUICK CHANGE PULL BAR BRACKETS (PAIR) 1-3 INCH FORWARD OFFSET.

**CPT-800**



QUICK PULL BAR ADJUSTER  
**CPT-8066**



QUICK CHANGE PULL BAR BRACKETS (PAIR) 1-3 INCH SET BACK.

**CPT-825**

## FORD 9" PULL BAR BRACKETS

1/4 INCH THICK PLATES.



QUICK CHANGE PULL BAR BRACKETS, 1"- 3" SET FORWARD (PAIR). THESE PLATES ARE FOR THE FORD 9" WELD ON ADAPTER QUICK CHANGE PLATES FOR 1"-3" AHEAD CPT-822

**CPT-810**



FORD WELD ON QUICK CHANGE ADAPTOR PLATES - SET OF 2. ALLOWS FOR QUICK CHANGE PLATES TO BE USED ON FORD 9" REAR END.

**CPT-822**



FORD 9 INCH PULL BAR BRACKETS (PAIR) 1-3 INCH FORWARD OFFSET.

**CPT-826**



FORD 9 INCH PULL BAR BRACKETS (PAIR) 1-3 INCH FORWARD OFFSET.

**CPT-828**



FORD 9 INCH PULL BAR BRACKETS (PAIR) 1-3 INCH FORWARD OFFSET BOLT ON.

**CPT-813**

**JASON INGALLS, IRP RACE CARS  
LONGVIEW, TX**



# PANHARD BARS / J BARS

# CHASSIS FRAME ACCESSORIES

## J BARS - SUPERIOR NO FLEX AND HEAVY DUTY

J-STYLE MACHINED PANHARD BAR WITH REBUILDABLE HEIM END.



**CPT-2210**

J-STYLE MACHINED PANHARD BAR WITH REBUILDABLE HEIM END, ADJUSTABLE FROM 18 3/4" TO 20 3/4" LONG.

**CPT-2210**

**LESS FLEX MEANS MORE SIDE-BITE AND MORE TRACTION!!**



**REBUILDABLE HEIM END**



J-STYLE TUBE PANHARD BAR WITH REBUILDABLE HEIM END, - SPECIFY LENGTH.

**CPT-2200**

J BAR ADJUSTMENT BUSHING  
**CPT-2220**



**CPT-2220**

## FRAME ACCESSORY MOUNTS

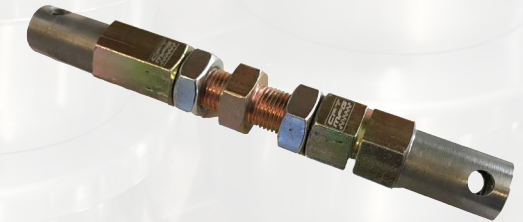
1-1/4", 1-1/2", 1-3/4" TUBE CLAMP SIZES



**CPT-995-1-1/4**

**CPT-995-1-1/2**

**CPT-995-1-3/4**



REAR DECK WELD IN ADJUSTER  
**CPT-8032**

## TUBE CLAMPING 3 POSITION SHOCK MOUNT

1-1/4", 1-1/2", 1-3/4" TUBE CLAMP SIZES



TUBE CLAMP CLEVIS MOUNT  
**CPT-247**



**WADE KENNEMORE #24K**  
JANESVILLE, CA

## CLAMP ON 1"-8 THREAD JACK SCREW MOUNTS

1-1/4", 1-1/2", 1-3/4" TUBE CLAMP SIZES



SQUARE TUBE CLAMP JACK BOLT MOUNT  
**CPT-8900**



SQUARE TUBE CLAMP JACK BOLT MOUNT  
**CPT-8910**



# TORQUE LINKS / PULL BARS / PUSH BARS

**GRIPPER™**

**BUSHING PULL BAR / TORQUE LINK**



**GRIPPER PULL BAR**

LINEAR BEARING - LARGE BISCUIT. (3.375" OD)  
CPT-830



CPT-830



CPT-831

**GRIPPER JR PULL BAR**

LINEAR BEARING - SMALL BISCUIT.  
(2.25" OD)  
CPT-831

**CPT MFG GRIPPER™ PUSH BAR**

SPECIALLY DESIGNED FOR DWARF LEGEND AND MODLITE RACE CARS. 18 INCH HEIM TO HEIM FOR SHORTEST LENGTH. PLEASE SPECIFY TOTAL LENGTH WHEN ORDERING. 3/4" TO 1/2" HEIM REDUCERS ARE ALSO INCLUDED. ADJUSTABLE LOCK OUT.

CPT-836



**SPRING GRIPPER PULL BAR**

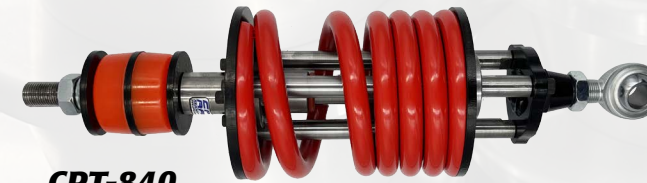
LINEAR BEARING - 2 STAGE

SPRING SLIDE IS FULLY LINEAR BEARING, ALLOWING THE SPRING TO HAVE A MORE SMOOTH, MORE CONSISTENT SPRING RATE AND MOVEMENT.

CPT-835



CPT-835



CPT-840

**SPRING GRIPPER II PULL BAR  
(SPECIALLY DESIGNED FOR DRY SLICK AND STOP & GO TRACKS)**

LINEAR BEARING - SINGLE STAGE

EXTRA SMOOTH TRANSITION ON DRY TRACKS. INCREASES DRIVE, ELIMINATES THE NEED TO RUN A TOP SHOCK. BETTER RESPONSE FOR STOP AND GO TRACKS.

CPT-840

**CPT MFG GRIPPER™ MINI BISCUIT DUAL SHAFT PULL BAR**

SPECIALLY DESIGNED FOR DWARF LEGEND AND MODLITE RACE CARS. 18 INCH HEIM TO HEIM FOR SHORTEST LENGTH. PLEASE SPECIFY TOTAL LENGTH WHEN ORDERING. 3/4" TO 1/2" HEIM REDUCERS ARE ALSO INCLUDED. ADJUSTABLE LOCK OUT.

CPT-833



CPT-833

**WONDER-BAR Pull Bar**

0-1 Inch of movement. 1-1/4" OD Tube, 3/4" thread and heims. Can replace solid torque link. Not IMCA legal. Sport mod, Mini Mod, Dwarf car. Specify length when ordering.

CPT-834



# POLYURETHANE BUSHINGS

**GRIPPER™** TECH SHEET  
**POLYURETHANE SPRING BUSHINGS**



**CPT Racing MFG GRIPPER™ POLYURETHANE SPRING BUSHINGS** have proven to provide excellent traction in all track conditions while being reliable, durable and easy to use. CPT Racing MFG uses only the highest quality polyurethane available to achieve the best possible performance, durability and life span of our bushings. **This quality and process allows CPT's FLUBBER GRIPPER™ Polyurethane Bushings to absorb more movement while not splitting.** This is a big advantage on dry tracks. Not only do we use the best polyurethane available, we also build our bushings taking no short cuts in the curing process to further insure our product is the most reliable as possible.

## ALL CPT MFG POLYURETHANE BUSHINGS ARE MADE IN HOUSE.

(CUSTOM OPTIONS ARE AVAILABLE)



LARGE BISCUIT  
 GREEN- SOFT  
**CPT-8310**



LARGE BISCUIT  
 YELLOW - MEDIUM  
**CPT-8313**



SMALL BISCUIT  
 BLACK - HARD  
**CPT-8305**



SMALL BISCUIT  
 GREEN- SOFT  
**CPT-8300**



SMALL BISCUIT  
 YELLOW - MEDIUM  
**CPT-8303**



SMALL BISCUIT  
 ORANGE - HARD-  
**CPT-8305**

LARGE BISCUIT  
 BLACK - HARD  
**CPT-8315**

**Bushing Selection** - There are many variables such as track conditions, driver experience, engine torque, angle of the Torque Link / Pull Bar, and tires that determine what bushings are needed. Also how much movement of the Torque Link / Pull Bar is desired or preferred by the driver is also a factor. As a general rule of thumb, the more Horse Power and the tackier the track, a higher durometer bushing is needed.

## GRIPPER GM BUSHINGS.....

**CPT Three Piece Built GM BUSHINGS Are Made From The Highest Quality Polyurethane Available !!!**

**CUSTOMERS HAVE REPORTED OVER 15 RACES ON A SET OF CPT GM BUSHINGS!!!**



GM BUSHING COMPLETE  
 GREEN - SOFT  
**CPT-9702**



GM BUSHING COMPLETE  
 YELLOW - MEDIUM  
**CPT-9704**



GM BUSHING COMPLETE  
 ORANGE - HARD  
**CPT-9706**



GM BUSHING ONLY  
 GREEN - SOFT  
**CPT-9708**



GM BUSHING ONLY  
 YELLOW - MEDIUM  
**CPT-9710**



GM BUSHING ONLY  
 ORANGE - HARD  
**CPT-9712**

## GRIPPER PULL BAR BISCUITS.....

**CPT Built Biscuits Are Made From The Highest Quality Polyurethane Available !!!**

**ONE PIECE GM BUSHINGS - AS REQUIRED BY IMCA, ARE AVAILABLE UPON REQUEST!!!**

# SPRING SLIDERS / ELIMINATORS

## CPT RACING MFG DOUBLE BARREL SLIDER

### DOUBLE BARREL DUAL BEARING

#### STANDARD SLIDER INCLUDE:

- 5" DUAL BEARING SPRING SLIDER
- STANDARD LENGTHS OF 24" & 26"
- EXTENDED 2 1/2" SPRING CUPS
- EXTENDED BEARING LENGTH
- TWO TRUE BEARING DESIGN
- RIGID BEARING MOUNTING
- OVER SIZED 5/8 INCH SHAFT
- HARDENED SHAFT
- LINEAR BEARINGS



CPT-7024 AND CPT-7026

### CPT RACING MFG SLIDERS....

.....have superior bearing deflection and durability. These sliders are built with oversized 5/8 inch hardened shafts and have a solid mounting of the bearings to extremely decrease bearing side load and eliminates any wobbling of the shaft. The internal bearings are twice the length of normal slider bearings. This will decrease bearing deflection and reduce binding in the toughest of conditions.

The Double Barrel Dual Bearing CPT Slider standard length is 24 inches. A 26 inch is also offered for an extended length. We also can build any special needs or options upon request !!!!

**SPECIAL / CUSTOM  
BUILDS ARE AVAILABLE  
UPON REQUEST !!!**



## OD ALIGNMENT CUP UPGRADE DOUBLE BARREL SPRING SLIDER - 24" AND 26"

DOUBLE LINEAR BEARING, EXTENDED SPRING CUP, HEAVY DUTY, LESS DEFLECTION.



### OD ALIGNMENT SOFT SPRING CUP UPGRADE OPTION FOR SLIDERS

CUPS ARE UPGRADED TO OD STYLE CUPS. ADD THIS PART NUMBER TO THE SLIDER PART NUMBER .

**CPT-9250**

**SOLID MOUNTED BEARING  
NO WIGGLE AT FULL EXTENSION !!!**



**LARGE PIN FOR EASY REMOVAL  
AND INSTALL!**

# SPRING SLIDER / ELIMINATORS

## STUBBY 22" DOUBLE BARREL SPRING SLIDER

CPT-7017



### SPRING SLIDER ACCESSORIES....



SLIDER REPLACEMENT SHAFT  
CPT-7024S - 24" SLIDER SHAFT, CPT-7026S - 26" SLIDER SHAFT



SLIDER REPLACEMENT BEARING  
CPT-8323



SLIDER WRENCH  
CPT-7025



SLIDER SPRING COMPRESSOR SETTER.  
CPT-989



SLIDER JAM NUT  
CPT-9259



SLIDER BEARING END PLATE  
CPT-14615

# SPRING CUPS



FRONT STUBBY OD ALIGNMENT SOFT SPRING SWIVEL DROP CUP - FOR 5" SPRING - 1-1/2" DEEP  
CPT-987



CPT-566

**TORRINGTON BEARING GOES IN BETWEEN JACK BOLT AND SWIVEL BEARING.  
ELIMINATES ALL THE BIND ON SPRING AND JACK BOLT.**



OD SWIVEL DROP CUP FOR 5" SPRING- 3-1/2" DEEP  
CPT-981



FRONT SWIVEL DROP CUP FOR 5" SPRING - 3-1/2" DEEP  
CPT-980



OD SWIVEL CUP FOR 5" SPRING  
CPT-984



FRONT STUBBY ID ALIGNMENT SOFT SPRING SWIVEL DROP CUP - FOR 5" SPRING - 1-1/2" DEEP  
CPT-988



SWIVEL STANDARD CUP FOR 5" SPRING  
CPT-985



SWIVEL EXTENDED CUP FOR 5" SPRING - 5" DEEP  
CPT-990

# SPRING CUPS



OD SWIVEL DROP CUP FOR 5-1/2" SPRING- 3-1/2" DEEP  
**CPT-986**



FRONT SWIVEL DROP CUP FOR 5-1/2" SPRING - 3-1/2" DEEP  
**CPT-996**



OD SWIVEL CUP FOR 5-1/2" SPRING  
**CPT-983**



LONG DROP CUP EXTENDED 6" FOR 5" SPRING - BOLT ON  
**CPT-929**



OD BOLT-ON DROP CUP FOR 5" SPRING  
**CPT-927**



OD BOLT-ON CUP FOR 5" SPRING  
**CPT-982**



DROP CUP FOR 5" SPRING, 3-1/2" DEEP - BOLT ON  
**CPT-926**



WELD ON SPRING CUP FOR 5" SPRING - W/ LOCKABLE RETAINING BOLTS  
**CPT-925**



1" WIDE - 3" ID - REAR END CLAMP FOR WELDING SPRING CUPS TO.  
**CPT-725**

# JACK BOLTS



JACK SCREW BOLT 3/4" AND 1" AND COARSE THREAD WITH QUICK PIN

### 3/4 INCH COARSE THREAD

- CPT-99006** 6" LONG
- CPT-99008** 8" LONG
- CPT-99010** 10" LONG
- CPT-99012** 12" LONG

### 1 INCH COARSE THREAD

- CPT-98006** 6" LONG
- CPT-98008** 8" LONG
- CPT-98010** 10" LONG
- CPT-98012** 12" LONG
- CPT-98015** 15" LONG



JACK SCREW BOLT 3/4" AND 1" COARSE THREAD WITH CLEVIS

### 3/4 INCH COARSE THREAD

- CPT-99006C** 6" LONG
- CPT-99008C** 8" LONG
- CPT-99010C** 10" LONG
- CPT-99012C** 12" LONG

### 1 INCH COARSE THREAD

- CPT-98006C** 6" LONG
- CPT-98008C** 8" LONG
- CPT-98010C** 10" LONG
- CPT-98012C** 12" LONG
- CPT-98015C** 15" LONG



JACK SCREW BOLT 3/4" AND 1" COARSE THREAD WITH BEARING CLEVIS

### 3/4 INCH COARSE THREAD

- CPT-99006BC** 6" LONG
- CPT-99008BC** 8" LONG
- CPT-99010BC** 10" LONG
- CPT-99012BC** 12" LONG

### 1 INCH COARSE THREAD

- CPT-98006BC** 6" LONG
- CPT-98008BC** 8" LONG
- CPT-98010BC** 10" LONG
- CPT-98012BC** 12" LONG
- CPT-98015BC** 15" LONG



JAM NUT- FOR JACK SCREW 1"-8 COARSE THREAD - SOLD EACH  
**CPT-562**



JAM NUT 3" LONG FOR JACK SCREW 3/4" COARSE THREAD  
**CPT-564L**



JAM NUT- FOR JACK SCREW 3/4" COARSE THREAD  
**CPT-563**



TORRINGTON BEARING FOR SHOCK MOUNT & SPRING CUPS  
**CPT-566**

# SUSPENSION TUBES

## 7/8" OD SUSPENSION TUBES / TRAILING ARMS

STRAIGHT SUSPENSION TUBE / TRAILING ARM - 5/8"-18 THREAD.

DOM TUBE - MACHINED ENDS WITH 13/16" HEX ON BOTH ENDS. LEFT HAND THREADS MARKED WITH 3 MACHINED MARKS. POWDER COATED. 4" TO 21" OPTIONAL LENGTHS. CUSTOM LENGTHS AVAILABLE UPON REQUEST.

CPT-8400-"TUBE LENGTH"

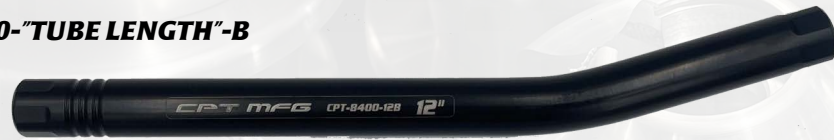


## 7/8" OD SUSPENSION TUBES / TRAILING ARMS

BENT SUSPENSION TUBE / TRAILING ARM - 5/8"-18 THREAD.

DOM TUBE - MACHINED ENDS WITH 13/16" HEX ON BOTH ENDS. LEFT HAND THREADS MARKED WITH 3 MACHINED MARKS. POWDER COATED. 8" TO 21" OPTIONAL LENGTHS. CUSTOM LENGTHS AVAILABLE UPON REQUEST.

CPT-8400-"TUBE LENGTH"-B



## 1-1/4" OD PULL BAR SUSPENSION TUBE

PULL BAR SUSPENSION TUBE, 3/4"-16 RIGHT HAND AND LEFT HAND THREAD, 1-1/4" OD.

DOM TUBE - WELDED ENDS. POWDER COATED. 4" TO 14" OPTIONAL LENGTHS. CUSTOM LENGTHS AVAILABLE UPON REQUEST.

CPT-895-"TUBE LENGTH"



3/4"-16 THREAD 3" PULL BAR TIE ROD

CPT-895-3



DOUBLE ADJUSTER IS 5/8"-18 LH AND 5/8"-18 RH FEMALE THREAD. OVERALL LENGTH IS 3-7/8"  
CPT-8450

**WE HAVE HEIMS AND JAM NUTS**



# COIL OVER KITS

**5" COIL OVER KIT WITH OR WITHOUT OD CUPS. LIGHT WEIGHT ALUMINUM DESIGN WITH JAM NUT.**

## COIL OVER KITS W/ STANDARD CUPS

- |                  |           |
|------------------|-----------|
| CPT-5689-PEN-ID  | PENSKE    |
| CPT-5689-FOX-ID  | FOX & CPT |
| CPT-5689-BIL-ID  | BILSTEIN  |
| CPT-5689-INT-ID  | INTEGRA   |
| CPT-5689-QA1-ID  | QA1       |
| CPT-5689-AFCO-ID | AFCO      |



## COIL OVER KITS W/ OD CUPS

- |                  |           |
|------------------|-----------|
| CPT-5689-PEN-OD  | PENSKE    |
| CPT-5689-FOX-OD  | FOX & CPT |
| CPT-5689-BIL-OD  | BILSTEIN  |
| CPT-5689-INT-OD  | INTEGRA   |
| CPT-5689-QA1-OD  | QA1       |
| CPT-5689-AFCO-OD | AFCO      |

**DAVE SCIARRONI #25s  
RENO, NV**



# LIFT ARM - WITH CLIMBER ADJUSTMENT

## DIRT MODIFIED CLIMBER LIFT ARM

RAISED 2-1/2 INCHES. 5TH COIL CLIMBER ADJUSTMENT (26"-34") INFINITE ADJUSTABILITY. SWIVEL CLEVIS FOR STABILIZATION BAR. POWDER COATED.

MOUNTING KIT SOLD SEPARATELY. (CPT-20440).

**CPT-20400**



**CPT-20400**



DIRT MODIFIED LIFT ARM MOUNTING KIT FOR CPT-20400 LIFT ARM.

INCLUDES (2) 5/8" RH HEIMS W/ JAM NUTS, (4) 1/4" THICK TORQUE ARM PLATES AND (2) STEEL SPACERS. POWDER COATED.

**CPT-20440**

# MISCELLANEOUS EXTRAS



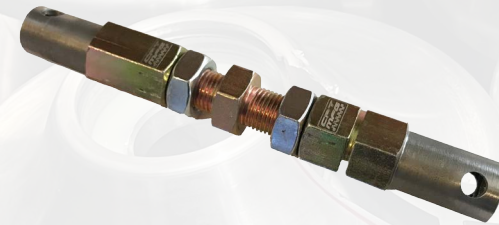
BLACK AIR CLEANER NUT. 5/16"-18 THREAD. WITH O-RING.

**CPT-85516**



BLACK AIR CLEANER NUT WITH 3/4 WRENCH HEX. 5/16"-18 THREAD. WITH O-RING.

**CPT-85516H**



REAR DECK WELD IN ADJUSTER  
**CPT-8031**



**KALE WESTOVER #15  
OKLAHOMA CITY, OK**

**SUSPENSION LOAD STICK AND ACCESSORIES**



HARD CASE FOR LOAD STICK  
**CPT-8830**



LOAD STICK & INDICATOR  
**CPT-8807**



LOAD STICK WRENCH  
**CPT-8820**



TRAILING ARM DEGREE FINDER - THIS TOOL ALLOWS FOR FINDING THE DEGREE OF BENT TRAILING ARMS.  
**CPT-2250**



SLIDER WRENCH  
**CPT-7025**



SLIDER SPRING COMPRESSOR  
**CPT-989**

**SUSPENSION MEASURING TOOL**



CPT PROFESSIONAL SUSPENSION MEASURING TOOL. ACCURATELY MEASURE J BARS, TRAILING ARMS, PULL BARS AND SLIDERS. LINEAR BEARING SLIDE. CAN FIT 1/2", 5/8" AND 3/4" HEIMS.  
**CPT-2245**

COIL OVER CUP WRENCH  
**CPT-7030-ID**  
**CPT-7030-OD**



COIL OVER TUBE WRENCH  
**CPT-7028**

**CPT MFG MERCHANDISE**



BANNER - FITS ON BACK OF RACE CARS  
**CPT-BANNER**

WALLET  
**CPT-7500**



T-SHIRT  
**CPT-1301**



**CPT-HAT**





**“SPECIALIZING IN SUSPENSION COMPONENTS”**

- BIRDCAGES • TWO LINK BRACKETS • BRAKE FLOATERS • PULL BARS • CHAIN HANGERS •
- PINION PLATES • CALIPER BRACKETS • PULL BAR BRACKETS • J-BARS •



---

***For More Information..... CALL OR TEXT TODAY!!!***  
***CPT RACING MFG 1201 East MacArthur St. #3, Sonoma CA 95476***

---